

Discussion of USDA/NASS September Crop Production Report

Gregg Ibendahl

September 13, 2024

Abstract¹

This reports discusses the USDA/NASS September Crop Production Report and compares it to Ibendahl's *Estimates of Corn Production and Yields Based on 9/8/24 Crop Condition* Article. Ibendahl's estimate of a national corn yield of 183.9 bu/ac is only 0.3 bu/ac above the USDA/NASS estimate of 183.6. However, Ibendahl's 9/8/24 estimate was 0.8 bu/ac higher than his 9/1/24 estimate. Ibendahl discussed the August Crop Production Report here *Discussion of USDA-NASS August Crop Production Report*

Introduction

USDA/NASS issues a crop production report each month but there are a couple of reports that hold more interest to traders and producers of corn and soybeans than others. The first is the June Crop Report. This is the first report with an estimate of harvested acres on a state by state basis for corn and soybeans. The second is the August crop report which has an update to harvested acres as well as a state by state estimate of corn yields. The September crop report refines the estimates even further.

Ibendahl, by contrast, has been estimating state yields each week starting with the first weekly crop condition report just after Memorial day. Ibendahl starts estimating total corn production when the USDA/NASS estimate of harvested acres becomes available in June. While Ibendahl estimates the state yield based on USDA weekly crop condition reports, he uses the USDA June estimate of harvested acres in the total production calculation until the August and September estimate of acres become available.

¹Kansas State University - Department of Agricultural Economics
AgManager.info
email: ibendahl@ksu.edu
YouTube: https://www.youtube.com/@little_pond_farm
Substack: <https://agricultural.substack.com>

Results

USDA/NASS has kept their corn harvested acres at 82.7 million acres, unchanged from the August crop report. The USDA national corn yield is estimated at 183.6 bu/ac, up 0.5 bu/ac from last month. Thus, U.S. corn production is slightly higher at 15.2 billion bushels. The USDA/NASS September estimate is still down slightly from last year

Ibendahl has been estimating a national US corn yield in the 180 bu/ac range since the beginning of June (See Figure 1). His most recent two estimates are 183.9 bu/ac (9/8/24) and 183.1 bu/ac (9/1/24). Thus, Ibendahl's estimate are nearly identical to the USDA estimate.

On a state by state basis, Ibendahl's estimates aren't quite as close but still within the confidence interval for most states. Figure 2 has the individual state comparison.

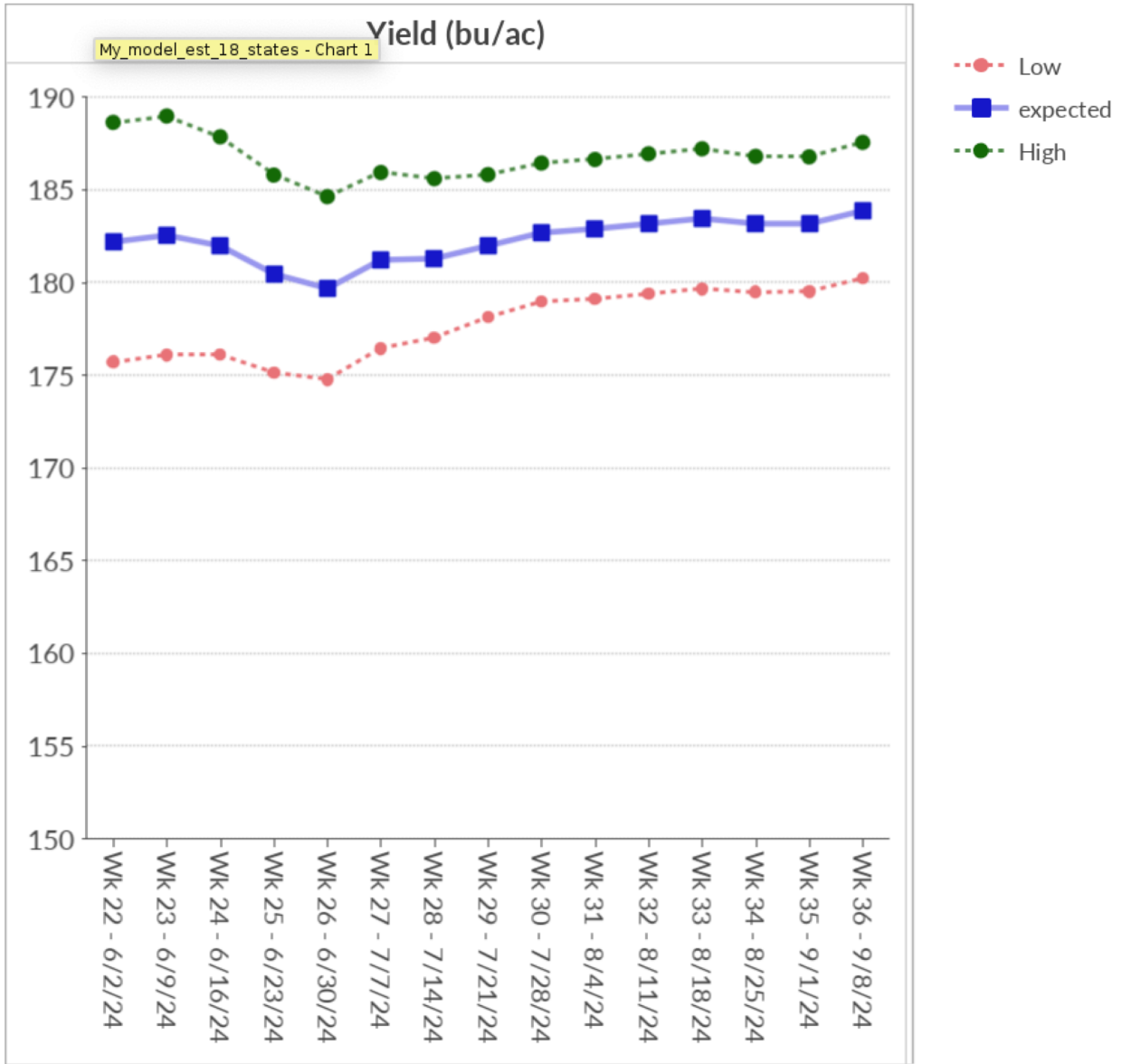


Figure 1: Estimated National Corn Yield per Acre

State	Ibendahl 9/8 estimate	USDA/NASS	
		estimate from 9/12 Crop Production report	difference
Colorado	126.5	123.0	3.5
Illinois	218.8	222.0	-3.2
Indiana	202.8	210.0	-7.2
Iowa	212.9	209.0	3.9
Kansas	123.0	131.0	-8.0
Kentucky	181.0	187.0	-6.0
Michigan	178.3	177.0	1.3
Minnesota	191.6	183.0	8.6
Missouri	188.5	181.0	7.5
Nebraska	194.4	195.0	-0.6
North Carolina	87.2	88.0	-0.8
North Dakota	144.4	146.0	-1.6
Ohio	181.1	187.0	-5.9
Pennsylvania	156.3	139.0	17.3
South Dakota	164.3	153.0	11.3
Tennessee	154.4	153.0	1.4
Texas	120.9	121.0	-0.1
Wisconsin	179.2	182.0	-2.8
U.S	183.9	183.6	0.3

Figure 2: Comparison of USDA estimate to Ibendahl's estimate