



# IGP Export Pace

## Wheat, Corn, Grain Sorghum, and Soybean Complex

08<sup>th</sup> May 2026  
Department of Grain & Food Science,  
Kansas State University

by Guy H. Allen – Senior Economist, International Grains Program, Kansas State University

For timely market news and quotes see IGP Market Information Website:

<http://www.dtnigp.com/> Find me on Twitter [igpguy1 @igpguy1](#)

KSU Ag Manager Link: <https://www.agmanager.info/grain-marketing/publications/us-grain-exports-and-trade>

KSU Agriculture Today Podcast Link: <https://agtodayksu.libsyn.com/timeliness-of-corn-and-soybean-plantingworld-grain-supply-and-demand>

IGP Market Information: <http://www.dtnigp.com/index.cfm>

USDA Transportation Report: <https://www.ams.usda.gov/services/transportation-analysis/gtr>

USDA FAS Historical Grain Shipments: <https://apps.fas.usda.gov/export-sales/wkHistData.htm>, <https://apps.fas.usda.gov/export-sales/complete.htm>

### Contents

<b>U.S. EXPORT ACTIVITY</b> .....	<b>1</b>
➤ <b>Export Sales</b> .....	<b>1</b>
➤ <b>Vessel Loadings</b> .....	<b>1</b>
➤ <b>Export Inspections</b> .....	<b>2</b>
<b>CEREAL GRAINS</b> .....	<b>5</b>
➤ <b>Wheat Export Shipments and Sales</b> .....	<b>5</b>
➤ <b>Rice Export Shipments and Sales</b> .....	<b>5</b>
<b>COARSE GRAINS</b> .....	<b>7</b>
<b>OILSEED COMPLEX</b> .....	<b>11</b>
➤ <b>Soybean Export Shipments and Sales</b> .....	<b>11</b>
➤ <b>Soybean Oil Export Shipments and Sales</b> .....	<b>11</b>

- This summary based on reports for the 8<sup>th</sup> of May 2026
- Outstanding Export Sales (Unshipped Balances) on the 30<sup>th</sup> of April 2026
- Export Shipments in Current Marketing Year
- Daily Sales Reported for the 7<sup>th</sup> of May 2026

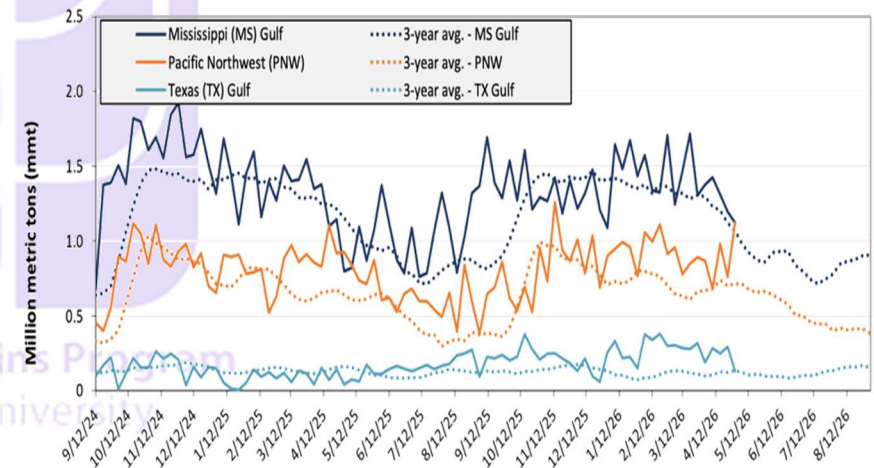
### U.S. EXPORT ACTIVITY

#### ➤ Export Sales

- Export Sales data for the week ending April 30, unshipped balances of corn, soybeans, and wheat for marketing year (MY) 2025/26 totaled 29.46 mmmts, down 5% from last week and up 26% from the same time last year.
- Net corn export sales were 1.36 mmmts, down 15% from last week.
- Net soybean export sales were .14 mmmts, down 45% from last week.
- Net wheat export sales were .08 mmmts, down 65% from last week.

#### ➤ Vessel Loadings

**Figure 18. U.S. grain inspections for U.S. Gulf and PNW (wheat, corn, and soybeans)**



**Ocean** - For the week ending April 30, 29 oceangoing grain vessels were loaded in the Gulf—unchanged from the same period last year. Within the next 10 days (starting May 01), 40 vessels were expected to be loaded - 54% more than the same period last year. As of April 30, the rate for shipping a metric ton (mt) of grain from the U.S. Gulf to Japan was \$67.25, up 1% from the previous week. The rate from the Pacific Northwest to Japan was \$35.75 per mt, up 2% from the previous week.

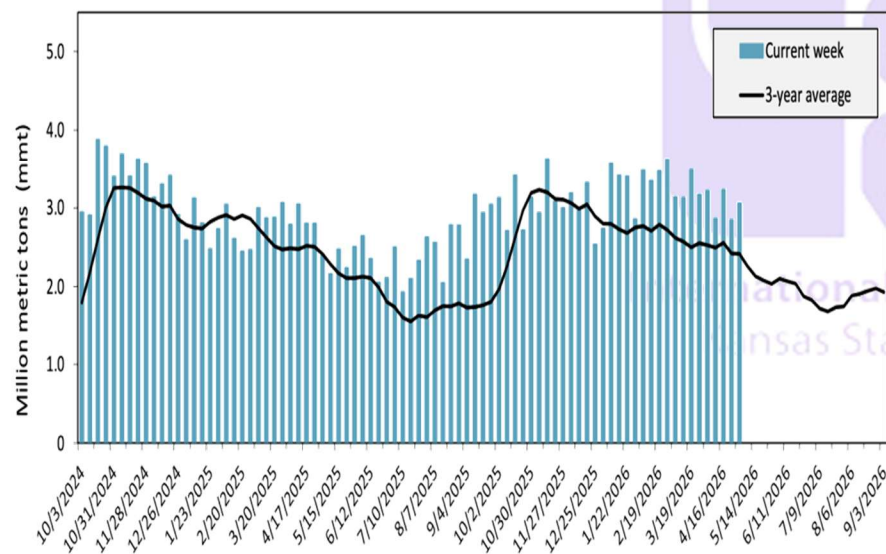
**Table 14. U.S. export balances and cumulative exports (1,000 metric tons)**

Grain Exports		Wheat						Corn	Soybeans	Total
		Hard red winter (HRW)	Soft red winter (SRW)	Hard red spring (HRS)	Soft white wheat (SWW)	Durum	All wheat			
Current unshipped (outstanding) export sales	For the week ending 4/30/2026	944	333	869	650	70	2,866	20,922	5,674	29,462
	This week year ago	814	229	655	638	25	2,361	16,808	4,253	23,422
	Last 4 wks. as % of same period 2024/25	122	143	140	119	359	131	130	161	135
Current shipped (cumulative) exports sales	2025/26 YTD	7,813	3,016	5,636	4,855	576	21,895	56,141	33,244	111,280
	2024/25 YTD	4,683	2,912	6,031	5,096	327	19,048	43,603	43,344	105,996
	YTD 2025/26 as % of 2024/25	167	104	93	95	176	115	129	77	105
	Total 2024/25	5,377	3,106	6,560	5,730	335	21,107	69,081	50,106	140,295
	Total 2023/24	3,535	4,260	6,314	3,906	526	18,540	54,277	44,510	117,328

Note: The marketing year for wheat is June 1 to May 31 and, for corn and soybeans, September 1 to August 31. YTD = year-to-date; wks. = weeks.  
Source: USDA, Foreign Agricultural Service.

➤ **Export Inspections**

**Figure 17. U.S. grain inspected for export (wheat, corn, and soybeans)**



**GRAINS INSPECTED AND/OR WEIGHED FOR EXPORT  
REPORTED IN WEEK ENDING APR 30, 2026  
-- METRIC TONS --**

GRAIN	WEEK ENDING			CURRENT MARKET YEAR TO DATE	PREVIOUS MARKET YEAR TO DATE
	04/30/2026	04/23/2026	05/01/2025		
BARLEY	0	0	49	7,145	10,258
CORN	2,027,942	1,656,665	1,616,806	55,482,062	42,524,073
FLAXSEED	24	24	0	624	432
MIXED	0	0	0	0	122
OATS	0	0	0	5,785	647
RYE	0	0	0	0	0
SORGHUM	143,302	182,510	11,177	3,654,648	1,673,137
SOYBEANS	450,145	638,303	335,685	33,269,587	43,501,466
SUNFLOWER	0	0	0	40	0
WHEAT	434,204	369,747	411,811	22,294,802	19,913,523
<b>Total</b>	<b>3,055,617</b>	<b>2,847,249</b>	<b>2,375,528</b>	<b>114,714,693</b>	<b>107,623,658</b>

CROP MARKETING YEARS BEGIN JUNE 1 FOR WHEAT, RYE, OATS, BARLEY AND FLAXSEED; SEPTEMBER 1 FOR CORN, SORGHUM, SOYBEANS AND SUNFLOWER SEEDS. INCLUDES WATERWAY SHIPMENTS TO CANADA.

**SOYBEANS INSPECTED AND/OR WEIGHED FOR EXPORT  
BY PORT AREA AND COUNTRY OF DESTINATION  
REPORTED IN WEEK ENDING APR 30, 2026  
-- METRIC TONS --**

Source: [https://www.ams.usda.gov/mnreports/wa\\_gr101.txt](https://www.ams.usda.gov/mnreports/wa_gr101.txt)

**Table 18. Grain inspections for export by U.S. port region (1,000 metric tons)**

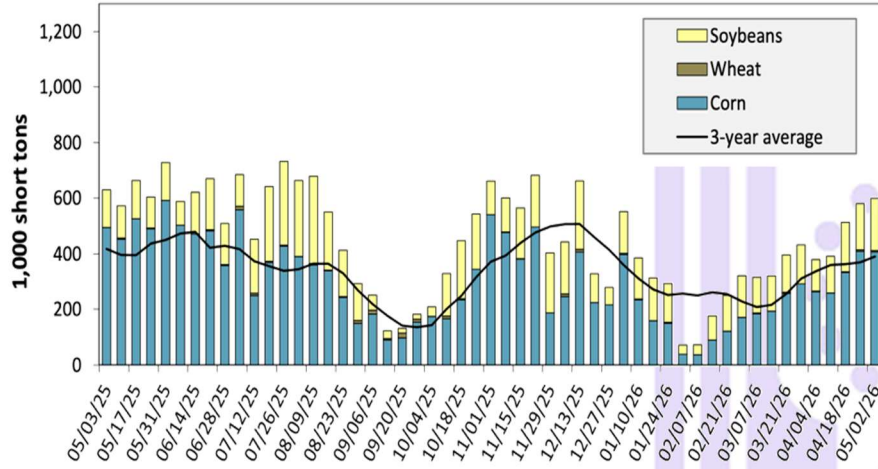
Port regions	Commodity	For the week ending 04/30/2026	Previous week*	Current week as % of previous	2026 YTD*	2025 YTD*	2026 YTD as % of 2025 YTD	Last 4-weeks as % of:		2025 total*
								Last year	Prior 3-yr. avg.	
Pacific Northwest	Corn	785	386	204	8,778	8,790	100	90	125	24,214
	Soybeans	65	112	58	3,353	1,966	171	156	262	2,957
	Wheat	200	263	76	3,416	3,688	93	80	96	12,271
	All grain	1,129	760	148	15,637	14,533	108	94	124	39,721
Mississippi Gulf	Corn	751	838	90	13,149	12,807	103	101	116	37,115
	Soybeans	258	345	75	10,148	9,000	113	141	139	23,350
	Wheat	112	12	901	1,122	1,220	92	87	72	3,980
	All grain	1,121	1,195	94	24,420	23,027	106	110	118	64,484
Texas Gulf	Corn	32	92	35	554	105	528	n/a	681	590
	Soybeans	0	0	n/a	100	106	94	n/a	n/a	1,431
	Wheat	38	33	115	1,373	1,137	121	41	55	4,690
	All grain	130	292	44	4,694	1,432	328	235	178	7,774
Interior	Corn	346	286	121	5,386	4,396	123	92	108	15,546
	Soybeans	112	165	68	2,425	2,313	105	87	109	7,712
	Wheat	67	42	162	1,008	1,007	100	83	99	3,104
	All grain	528	508	104	8,983	7,873	114	89	108	26,887
Great Lakes	Corn	49	19	253	133	0	n/a	n/a	n/a	414
	Soybeans	0	12	0	12	0	n/a	n/a	449	63
	Wheat	11	20	56	74	75	98	97	112	434
	All grain	60	51	117	219	75	291	327	355	911
Atlantic	Corn	66	36	184	619	131	473	400	472	607
	Soybeans	16	5	323	423	433	98	543	289	1,085
	Wheat	6	0	n/a	6	27	22	22	58	81
	All grain	87	41	215	1,048	590	178	301	338	1,773
All Regions	Corn	2,028	1,657	122	28,620	26,229	109	101	124	78,486
	Soybeans	450	638	71	16,866	13,922	121	131	144	36,851
	Wheat	434	370	117	6,999	7,154	98	74	85	24,560
	All grain	3,056	2,847	107	55,406	47,636	116	107	124	141,803

\*Note: Data include revisions from prior weeks; "All grain" includes corn, soybeans, wheat, sorghum, oats, barley, rye, sunflower, flaxseed, and mixed grains; "All regions" includes listed regions and other minor regions not listed; YTD = year-to-date; n/a = not available or no change. A "-" in the table indicates a percentage change with a near-zero denominator for the period.

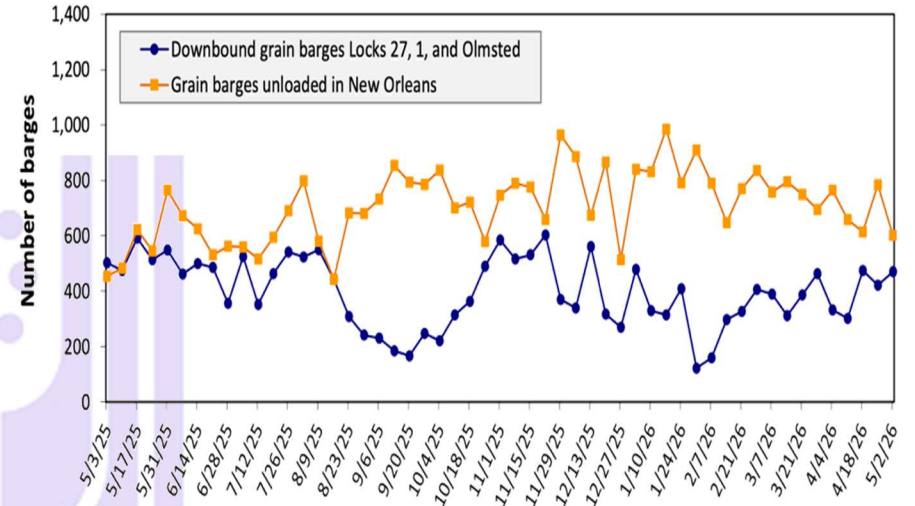
Source: USDA, Federal Grain Inspection Service.

➤ **BARGE MOVEMENTS**

**Figure 12. Barge movements on the Mississippi River (Locks 27-Granite City, IL)**



**Figure 14. Grain barges for export in New Orleans region**



**Barge** – For the week ending May 2<sup>nd</sup>, barged grain movements totaled 708,700 tons. This was 11% more than the previous week and 9% less than the same week last year. For the week ending May 2, 471 barges moved down river, 49 more than the previous week. There were 600 grain barges unloaded in the New Orleans Region, 23% fewer than the previous week.

**Table 10. Barged grain movements (1,000 tons)**

For the week ending 05/02/2026	Corn	Wheat	Soybeans	Other	Total
Mississippi River (Rock Island, IL (L15))	169	3	63	0	235
Mississippi River (Winfield, MO (L25))	269	6	164	0	439
Mississippi River (Alton, IL (L26))	429	5	197	0	631
Mississippi River (Granite City, IL (L27))	407	5	187	0	599
Illinois River (La Grange)	148	0	54	0	201
Ohio River (Olmsted)	50	0	38	0	88
Arkansas River (L1)	0	10	11	0	22
Weekly total - 2026	457	15	237	0	709
Weekly total - 2025	576	25	174	4	780
2026 YTD	5,145	293	3,593	28	9,059
2025 YTD	6,003	340	3,880	82	10,305
2026 as % of 2025 YTD	86	86	93	34	88
Last 4 weeks as % of 2025	94	82	131	0	104
Total 2025	20,015	1,259	11,322	166	32,761

Note: "Other" refers to oats, barley, sorghum, and rye. Total may not add up due to rounding. YTD = year to date. Weekly total, YTD, and calendar year total include Mississippi River lock 27, Ohio River Olmsted lock, and Arkansas Lock 1. "L" (as in "L15") refers to a lock, locks, or lock and dam facility.  
Source: U.S. Army Corps of Engineers.

## CEREAL GRAINS

### ➤ Wheat Export Shipments and Sales

**Wheat:** Net sales of 78,800 metric tons (mts) for 2025/2026 were down 65% from the previous week and 45% from the prior 4-week average. Increases primarily for Vietnam (67,400 mts, including 66,000 mts switched from unknown destinations and decreases of 1,800 mts), Thailand (53,700 mts, including decreases of 3,300 mts), Mexico (40,000 mts, including decreases of 13,000 mts), the Dominican Republic (34,700 mts, including 32,000 mts switched from unknown destinations), and Venezuela (30,000 mts), were offset by reductions for unknown destinations (128,800 mts), Indonesia (70,000 mts), and the Philippines (1,000 mts). Net sales of 187,500 mts for 2026/2027 were primarily for unknown destinations (100,000 mts), Thailand (61,000 mts), Mexico (13,700 mts), Colombia (12,000 mts), and Nicaragua (700 mts).

Exports of 472,700 mts were up 15% from the previous week and 20% from the prior 4-week average. The destinations were primarily to Mexico (182,800 mts), Vietnam (67,400 mts), Thailand (58,700 mts), Japan (47,200 mts), and the Dominican Republic (35,200 mts).

Source: USDA FAS - <https://apps.fas.usda.gov/esrqs/#/reports/weeklyexportsalesreportdetail>

### ➤ Rice Export Shipments and Sales

**Rice:** Net sales of 4,600 mts for 2025/2026--a marketing-year low--were down 88% from the previous week and 89% from the prior 4-week average. Increases primarily for Guatemala (5,600 mts, including 6,000 mts switched from unknown destinations and decreases of 400 mts), Honduras (5,100 mts), Canada (1,500 mts, including decreases of 100 mts), South Korea (1,100 mts), and Haiti (700 mts), were offset by reductions for unknown destinations (6,000 mts), Nicaragua (5,000 mts), and Japan (300 mts). Total net sales of 100 mts for 2026/2027 were for Japan.

Exports of 56,100 mts were down 33% from the previous week and 18% from the prior 4-week average. The destinations were primarily to Colombia (18,900 mts), Japan

Table 17. Top 10 importers of all U.S. wheat

For the week ending 4/30/2026	Total commitments (1,000 mt)		% change current MY from last MY	Exports 3-year average 2022-24 (1,000 mt)
	YTD MY 2025/26	YTD MY 2024/25		
Mexico	4,573	3,929	16	3,358
Philippines	2,897	2,637	10	2,473
Japan	2,248	2,111	6	2,045
China	336	139	142	1,137
Korea	1,887	2,392	-21	1,674
Taiwan	1,016	1,015	0	935
Thailand	714	951	-25	667
Nigeria	1,592	758	110	629
Indonesia	1,091	767	42	518
Colombia	735	502	46	489
Top 10 importers	17,089	15,202	12	13,926
Total U.S. wheat export sales	24,761	21,409	16	19,135
% of YTD current month's export projection	101%	95%	-	-
Change from prior week	79	70	-	-
Top 10 importers' share of U.S. wheat export sales	69%	71%	-	73%
USDA forecast, April 2026	24,494	22,480	9	-

Note: The top 10 importers are based on USDA, Foreign Agricultural Service (FAS) marketing year ranking reports for marketing year (MY) 2024/25 (June 1 - May 31). "Total commitments" = cumulative exports (shipped) + outstanding sales (unshipped), from FAS weekly export sales report, or export sales query. Total commitments' change (net sales) from prior week could include revisions from previous week's outstanding sales or accumulated sales. In rightmost column, "Exports" = accumulated exports (as defined in FAS marketing year ranking reports). mt = metric ton; yr. = year; avg. = average; YTD = year to date; "-" = not applicable.

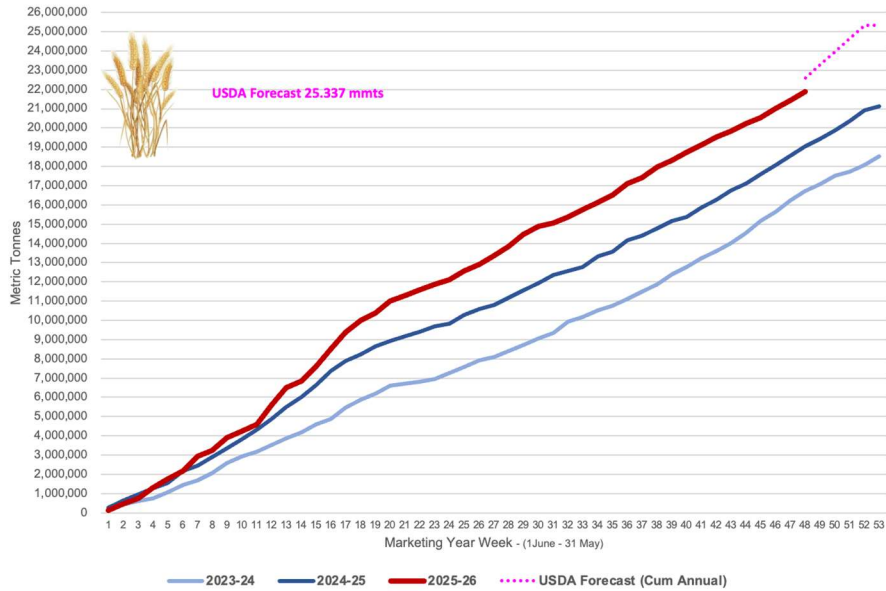
Source: USDA, Foreign Agricultural Service.

(13,300 mts), South Korea (7,900 mts), Guatemala (5,600 mts), and Mexico (4,000 mts).

Source: USDA FAS - <https://apps.fas.usda.gov/esrqs/#/reports/weeklyexportsalesreportdetail>

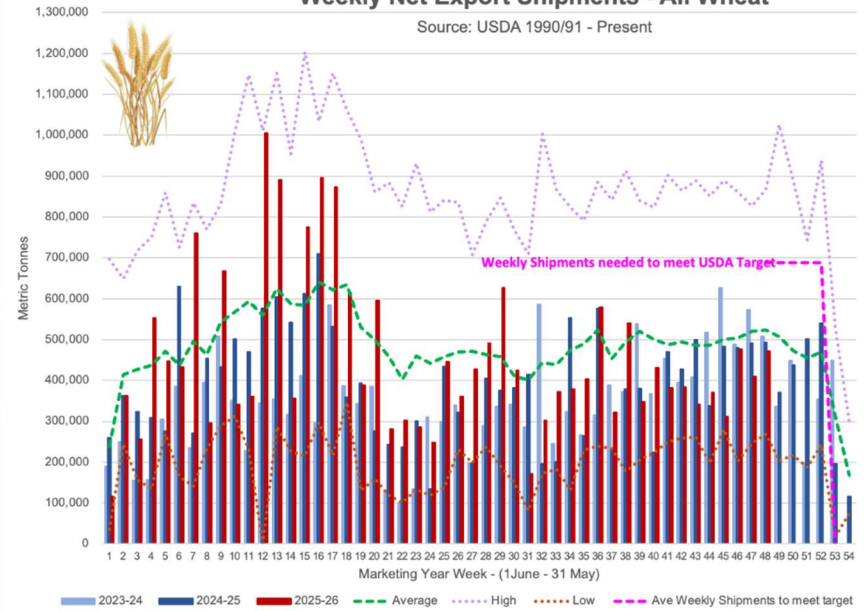
### Cumulative Weekly Net Exports of U.S. All Wheat

Source: USDA 1990/91 - Present



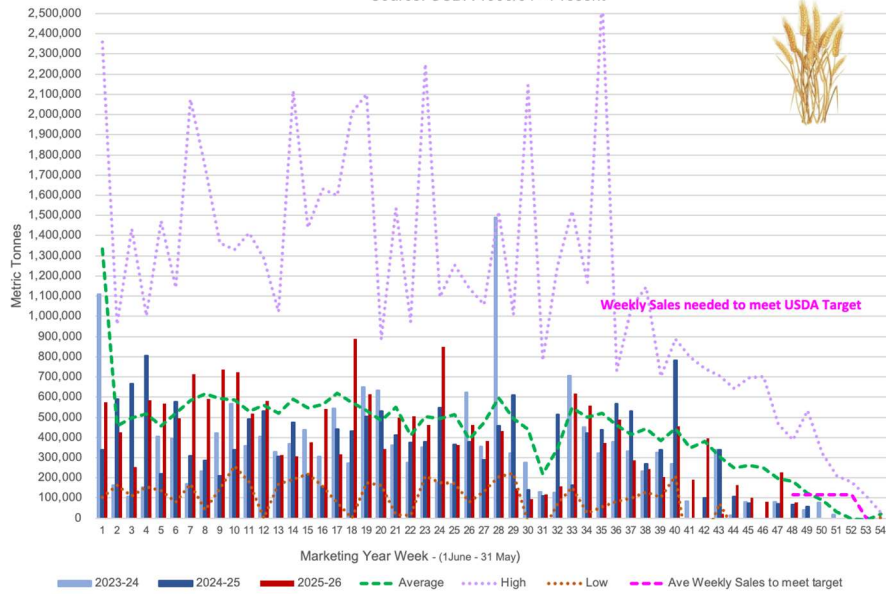
### Weekly Net Export Shipments - All Wheat

Source: USDA 1990/91 - Present



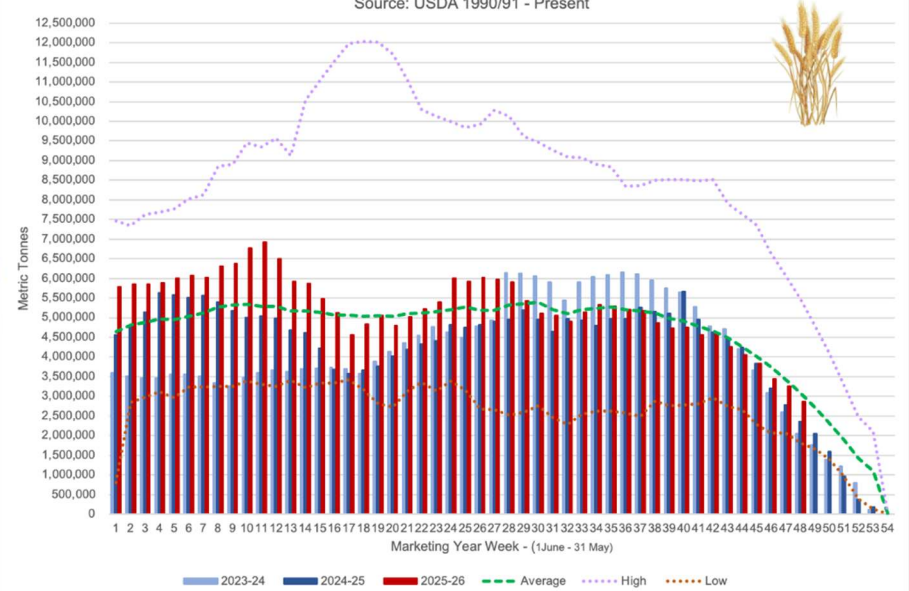
### Weekly Net Export Sales - U.S. All Wheat

Source: USDA 1990/91 - Present



### Outstanding Export Sales - U.S. All Wheat

Source: USDA 1990/91 - Present



## COARSE GRAINS

**Corn:** Net sales of 1,361,700 mts for 2025/2026 were down 15% from the previous week and 4% from the prior 4-week average. Increases primarily for Taiwan (301,600 mts, including 133,000 mts switched from unknown destinations), Colombia (296,200 mts, including 30,000 mts switched from unknown destinations and decreases of 52,900 mts), South Korea (281,900 mts, including 65,000 mts switched from unknown destinations and decreases of 1,400 mts), Mexico (255,200 mts, including decreases of 31,700 mts), and Japan (138,300 mts, including 64,500 mts switched from unknown destinations and decreases of 21,000 mts), were offset by reductions for unknown destinations (326,300 mts). Net sales of 122,800 mts for 2026/2027 were reported for unknown destinations (70,000 mts), Mexico (49,600 mts), and Honduras (3,200 mts).

Exports of 2,056,600 mts were up 28% from the previous week and 18% from the prior 4-week average. The destinations were primarily to Mexico (471,100 mts), Japan (313,600 mts), Colombia (310,800 mts), Taiwan (217,900 mts), and South Korea (205,100 mts).

**Barley:** Total net sales of 500 mts for 2025/2026 were for Canada. Exports of 1,900 mts were to Japan (1,000 mts) and Canada (900 mts).

Table 15. Top 5 importers of U.S. corn

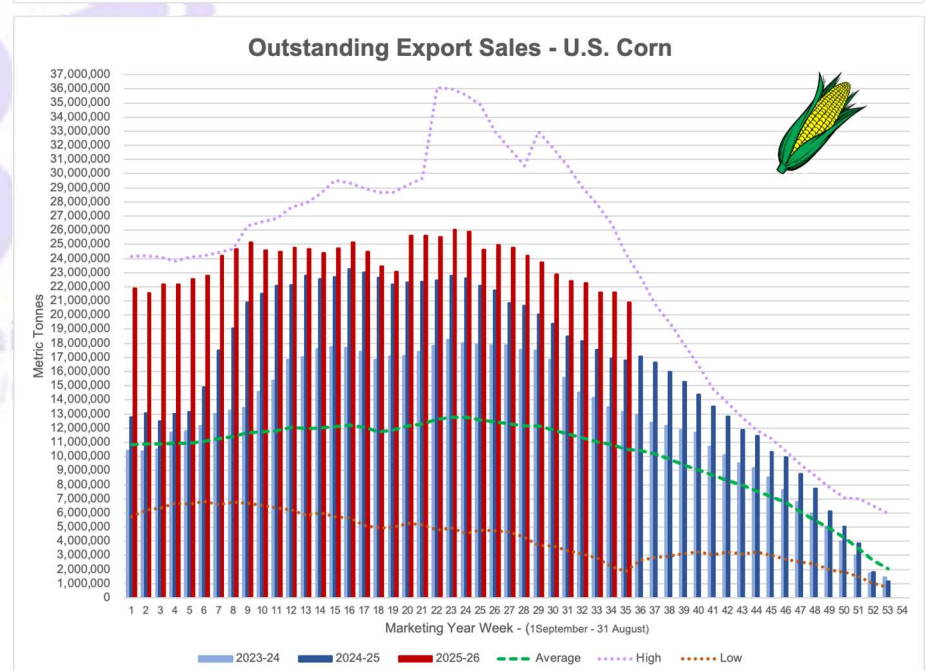
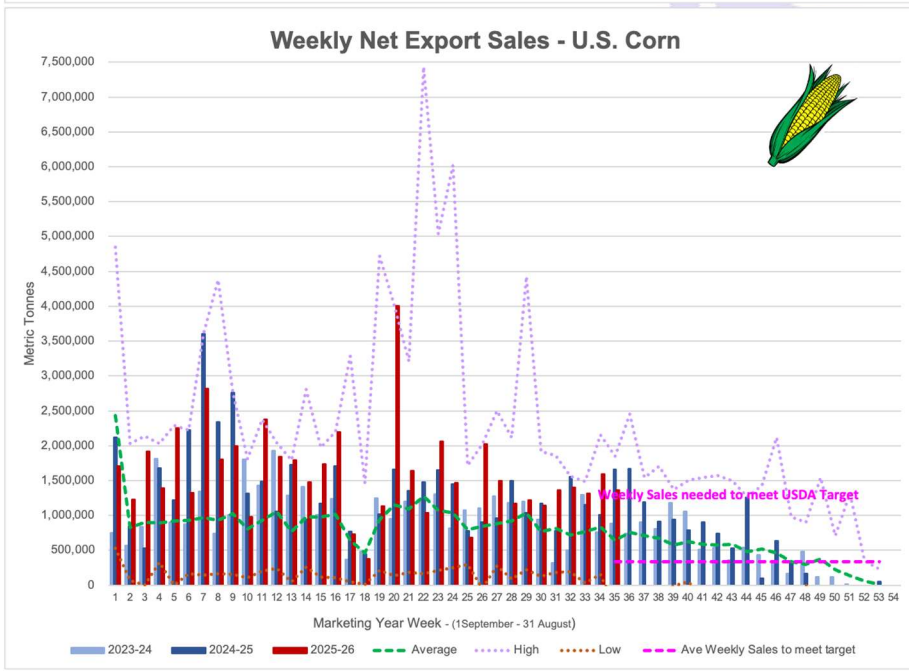
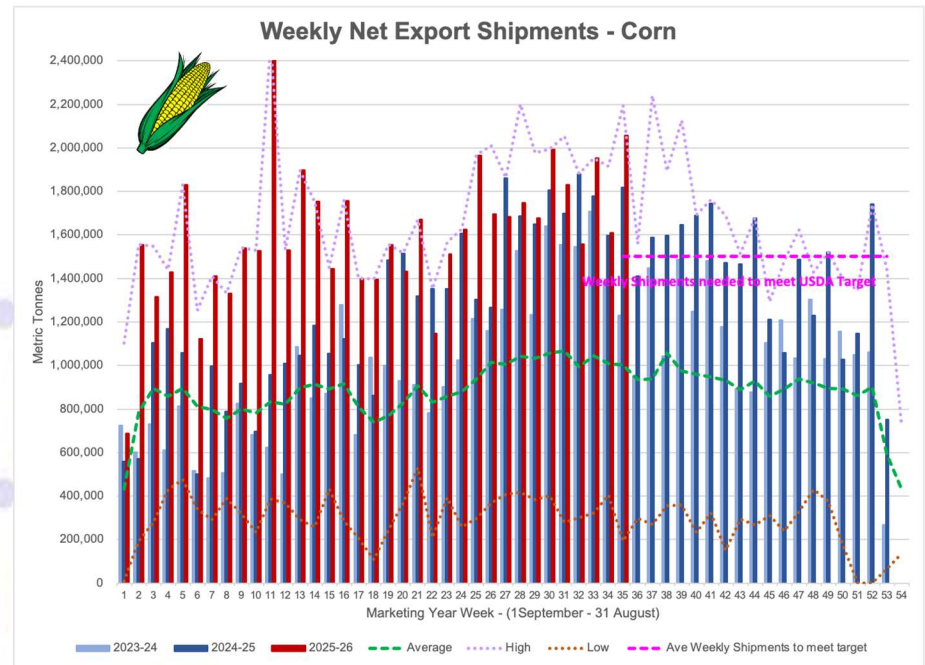
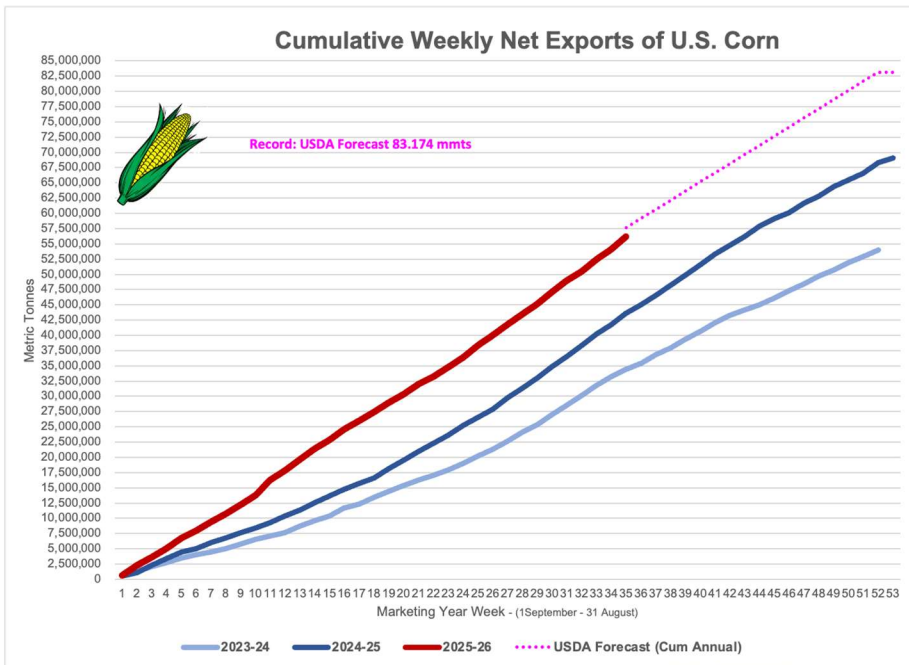
For the week ending 4/30/2026	Total commitments (1,000 mt)		% change current MY from last MY	Exports 3-year average 2022-24 (1,000 mt)
	YTD MY 2025/26	YTD MY 2024/25		
Mexico	21,936	20,369	8	19,839
Japan	13,059	10,430	25	10,478
Colombia	6,758	6,192	9	5,493
China	0	33	-100	3,461
Korea	7,841	4,561	72	3,127
Top 5 importers	41,753	37,023	13	39,272
Total U.S. corn export sales	77,063	60,411	28	54,276
% of YTD current month's export projection	92%	83%	-	-
Change from prior week	1,362	1,663	-	-
Top 5 importers' share of U.S. corn export sales	54%	61%	-	72%
USDA forecast April 2026	83,824	72,597	15	-
Corn use for ethanol USDA forecast, April 2026	142,240	138,075	3	-

Note: The top 5 importers are based on USDA, Foreign Agricultural Service (FAS) marketing year ranking reports for marketing year (MY) 2024/25 (September 1 - August 31). "Total commitments" = cumulative exports (shipped) + outstanding sales (unshipped), from FAS weekly export sales report, or export sales query. Total commitments' change (net sales) from prior week could include revisions from previous week's outstanding sales or accumulated sales. In rightmost column, "Exports" = accumulated exports (as defined in FAS marketing year ranking reports). mt = metric ton; yr. = year; avg. = average; YTD = year to date; "-" = not applicable.

Source: USDA, Foreign Agricultural Service.

**Sorghum:** No net sales for 2025/2026 were reported for the week. Exports of 142,200 mts were down 25% from the previous week and 15% from the prior 4-week average. The destinations were to China (132,200 mts) and Japan (10,000 mts).

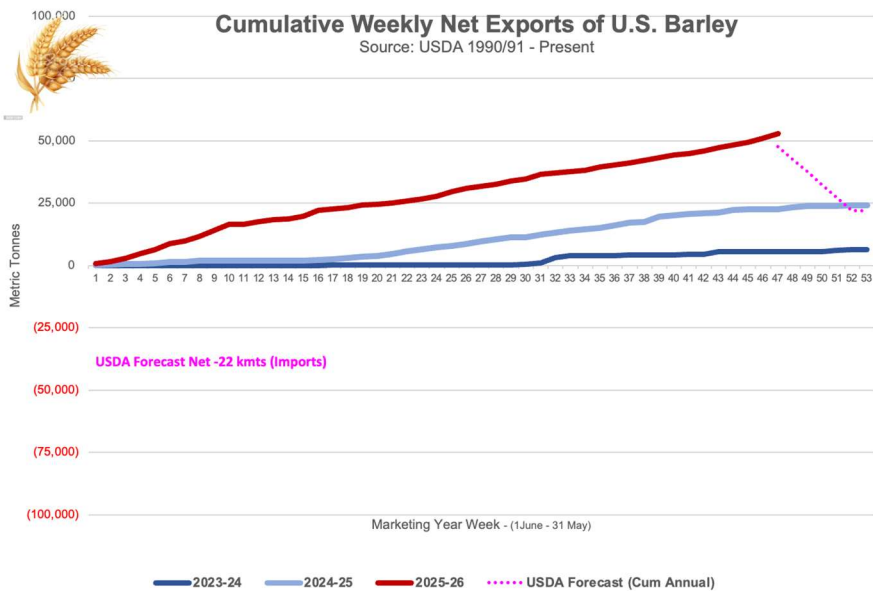
Source: USDA FAS - <https://apps.fas.usda.gov/esrqs/#/reports/weeklyexportsalesreportdetail>





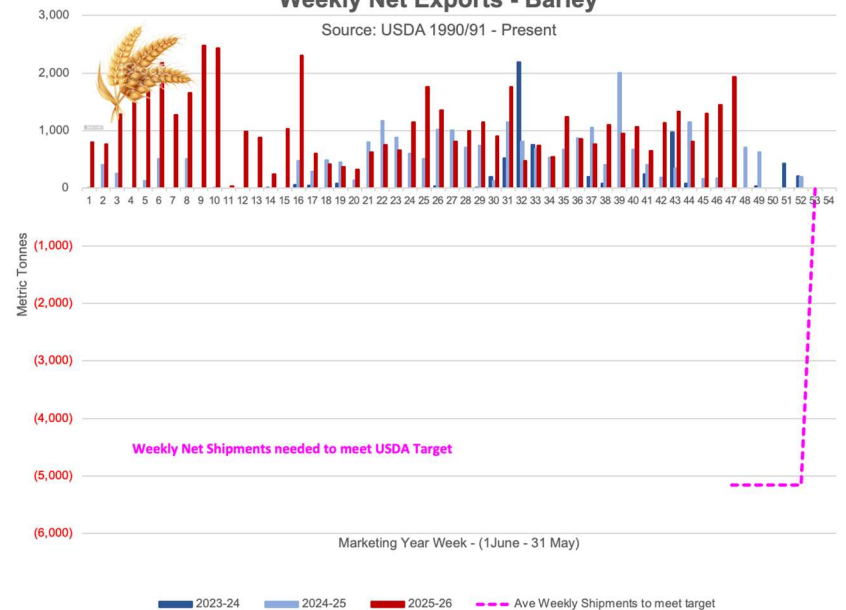
### Cumulative Weekly Net Exports of U.S. Barley

Source: USDA 1990/91 - Present



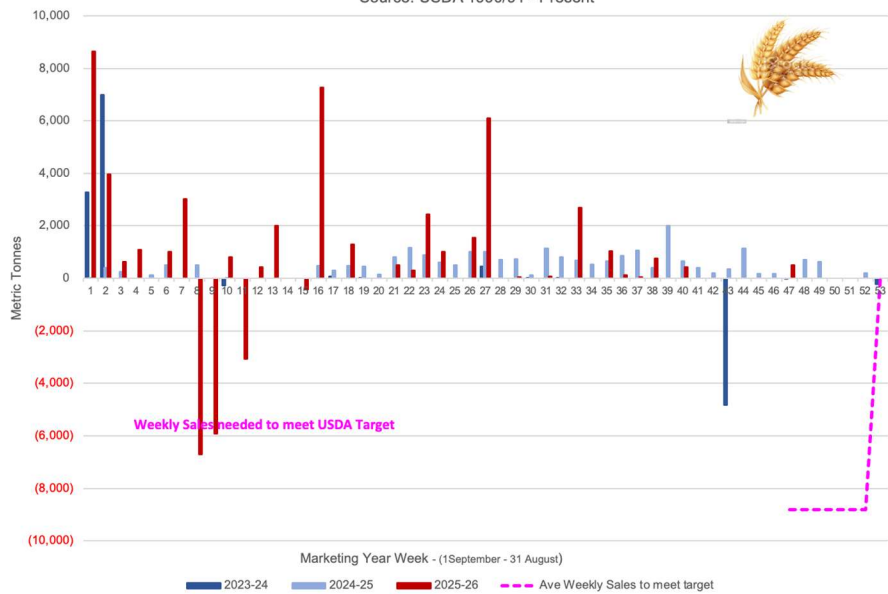
### Weekly Net Exports - Barley

Source: USDA 1990/91 - Present



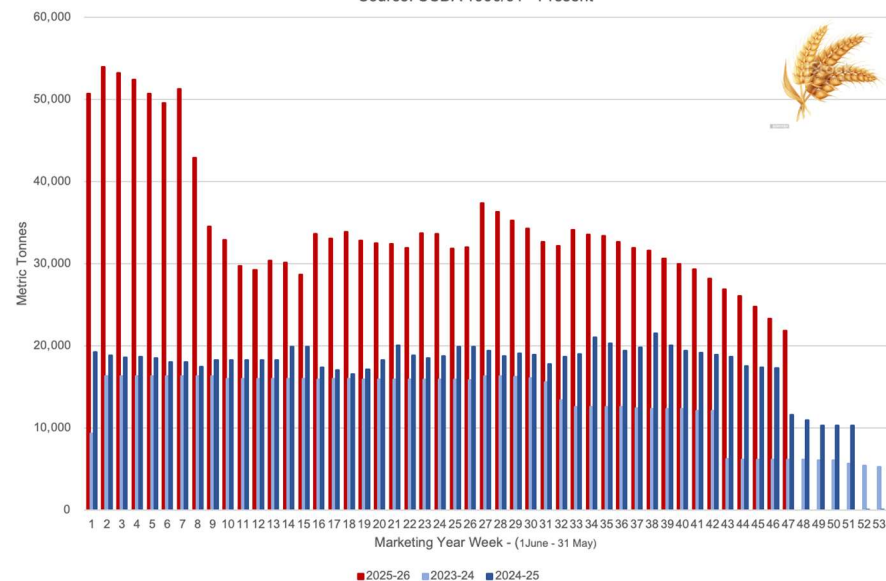
### Weekly Net Exports Sales - U.S. Barley

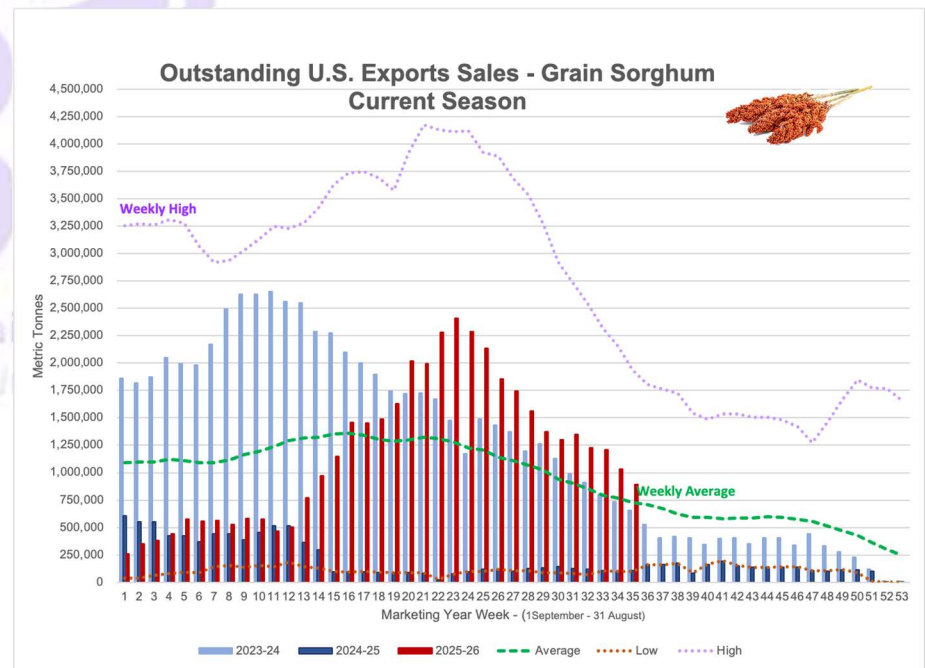
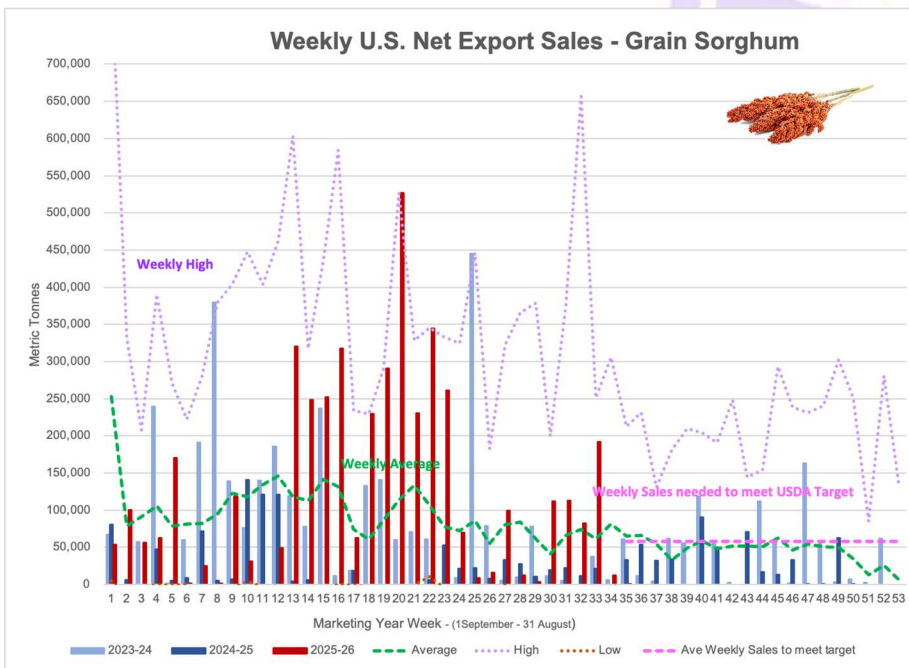
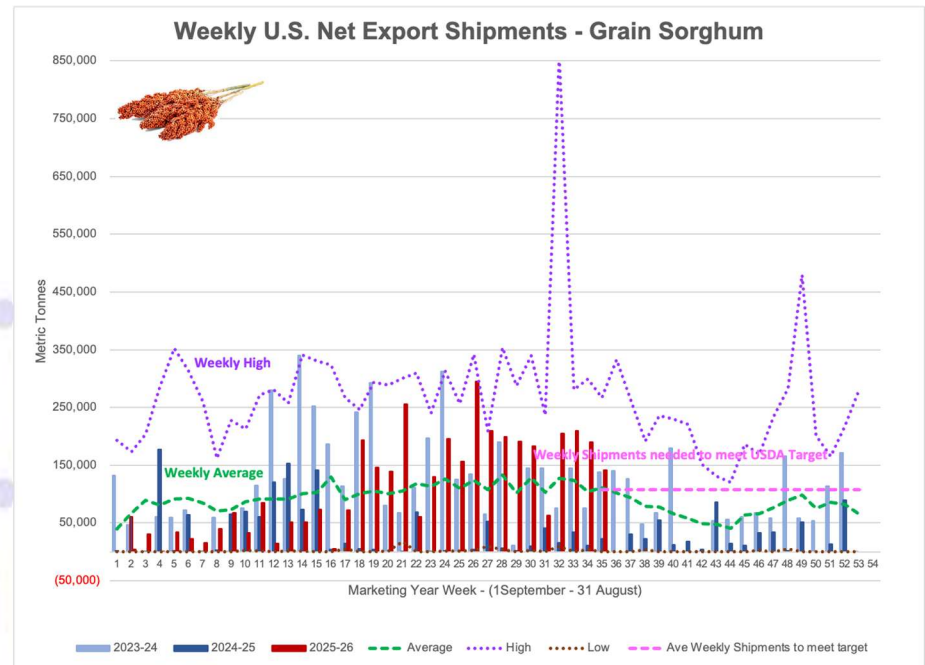
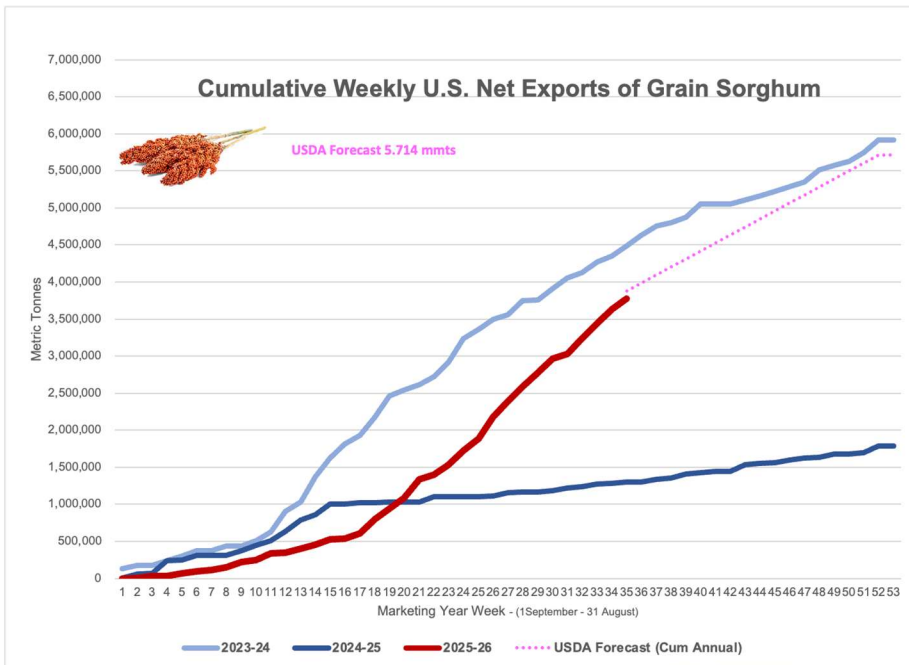
Source: USDA 1990/91 - Present



### Outstanding Net Exports Sales - U.S. Barley

Source: USDA 1990/91 - Present





## OILSEED COMPLEX

### ➤ Soybean Export Shipments and Sales

**Soybeans:** Net sales of 141,900 mts for 2025/2026--a marketing-year low--were down 45% from the previous week and 51% from the prior 4-week average. Increases primarily for China (66,900 mts, including 66,000 mts switched from unknown destinations and decreases of 3,200 mts), Japan (48,600 mts, including 51,000 mts switched from unknown destinations and decreases of 2,100 mts), Indonesia (43,500 mts, including 25,000 mts switched from unknown destinations and decreases of 600 mts), Saudi Arabia (30,900 mts, including 30,000 mts switched from unknown destinations), and Vietnam (9,000 mts), were offset by reductions for unknown destinations (96,000 mts) and Morocco (1,000 mts). Total net sales of 5,500 mts for 2026/2027 were for Indonesia.

Exports of 530,800 mts were down 13% from the previous week and 25% from the prior 4-week average. The destinations were primarily to China (200,900 mts), Mexico (91,700 mts), Japan (70,300 mts), Indonesia (40,300 mts), and Saudi Arabia (30,900 mts).

### Soybean Meal Export Shipments and Sales

**Soybean Cake and Meal:** Net sales of 312,100 mts for 2025/2026 were up 6% from the previous week and 16% from the prior 4-week average. Increases primarily for the Philippines (101,100 mts, including decreases of 100 mts), Colombia (54,300 mts, including 10,000 mts switched from unknown destinations and decreases of 10,300 mts), Mexico (42,500 mts), Honduras (33,400 mts), and the Dominican Republic (20,200 mts, including decreases of 7,900 mts), were offset by reductions for unknown destinations (23,300 mts), Canada (3,000 mts), Indonesia (2,900 mts), and Japan (1,600 mts). Net sales of 23,700 mts for 2026/2027 were reported for Ecuador (15,000 mts), Canada (6,100 mts), and Mexico (2,600 mts).

Table 16. Top 5 importers of U.S. soybeans

For the week ending 4/30/2026	Total commitments (1,000 mt)		% change current MY from last MY	Exports 3-year average 2022-24 (1,000 mt)
	YTD MY 2025/26	YTD MY 2024/25		
China	11,802	22,480	-48	26,078
Mexico	4,637	4,658	-0	4,762
Japan	1,954	1,774	10	2,107
Egypt	4,536	2,766	64	2,098
Indonesia	1,997	1,561	28	1,997
Top 5 importers	24,925	33,239	-25	37,042
Total U.S. soybean export sales	38,918	47,598	-18	48,941
% of YTD current month's export projection	93%	93%	-	-
Change from prior week	142	377	-	-
Top 5 importers' share of U.S. soybean export sales	64%	70%	-	76%
USDA forecast, April 2026	41,912	51,220	-18	-

Note: The top 5 importers are based on USDA, Foreign Agricultural Service (FAS) marketing year ranking reports for marketing year (MY) 2024/25 (September 1 - August 31). "Total commitments" = cumulative exports (shipped) + outstanding sales (unshipped), from FAS weekly export sales report, or export sales query. Total commitments' change (net sales) from prior week could include revisions from previous week's outstanding sales or accumulated sales. In rightmost column, "Exports" = accumulated exports (as defined in FAS marketing year ranking reports). mt = metric ton; yr. = year; avg. = average; YTD = year to date; "-" = not applicable. Source: USDA, Foreign Agricultural Service.

Exports of 350,300 mts were down 10% from the previous week and 7% from the prior 4-week average. The destinations were primarily to Colombia (107,400 mts), the Philippines (104,400 mts), Venezuela (19,800 mts), the Dominican Republic (19,200 mts), and Mexico (16,200 mts).

Optional Origin Sales: For 2025/2026, new optional origin sales of 4,000 mts were reported for Ecuador. The current outstanding balance of 30,500 mts, all Ecuador. For 2026/2027, the current outstanding balance of 2,000 mts, all Ecuador.

### ➤ Soybean Oil Export Shipments and Sales

**Soybean Oil:** Net sales of 1,000 mts for 2025/2026 were down 72% from the previous week and 15% from the prior 4-week average. Increases were primarily for Mexico (500 mts) and Canada (300 mts).

Exports of 1,300 mts--a marketing-year low--were down 57% from the previous week and 66% from the prior 4-week average. The destinations were primarily to Mexico (700 mts) and Canada (500 mts).

Source: USDA FAS - <https://apps.fas.usda.gov/esrqs/#/reports/weeklyexportsalesreportdetail>

