

Condition of Kansas Soybeans - Week #37 (9/15/24)

Gregg Ibendahl

September 18, 2024

Introduction¹

The USDA collects weekly crop conditions throughout the growing season. The crop is rated as either: very poor, poor, fair, good, or excellent. This is one of the few reports by the USDA that is collected and reported weekly. This article shows the historical crop condition for soybeans for a specific week in Kansas.

Current soybean condition in Kansas

Figure 1 uses a Likert scale to represent the soybean crop condition as of 9/15/24. The graph shows the last 20 years. The red and orange portion of the bars show the percent of the state where the soybean condition is very poor and poor. The total of these two categories is shown as the percent of the left-hand side. The blue areas of the bar represent the percent of the state where the soybean condition is good and excellent. The total of these two categories is shown as the percent on the right-hand side. The middle section in yellow is the percent of soybeans in fair condition. This is the percentage shown in the middle of the page. The Likert graph is always centered on the fair category to make it easier to compare years.

Figure 2 uses a Likert scale to represent the soybean crop condition for each week of the current year. While Figure 1 is a historical representation of the same week across time, Figure 2 represents different weeks of the current crop year.

Based on the data used to construct Figure 1, Ibendahl is currently estimating a state soybean yield of 38.5 bu/ac with a confidence interval from 37.3 to 39.6 bu/ac. This state soybean yield average is 1.0 bu/ac lower than last week. For comparison, USDA/NASS is estimating a state soybean yield of 39 bu/ac. This will be the last state level estimate for 2024. However, Ibendahl may report on alternative models to estimate yields at a later date.

¹Kansas State University - Department of Agricultural Economics
AgManager.info
email: ibendahl@ksu.edu
YouTube: https://www.youtube.com/@little_pond_farm
Substack: <https://agricultural.substack.com>

Condition of Kansas Soybeans as of WEEK #37 9/15/24

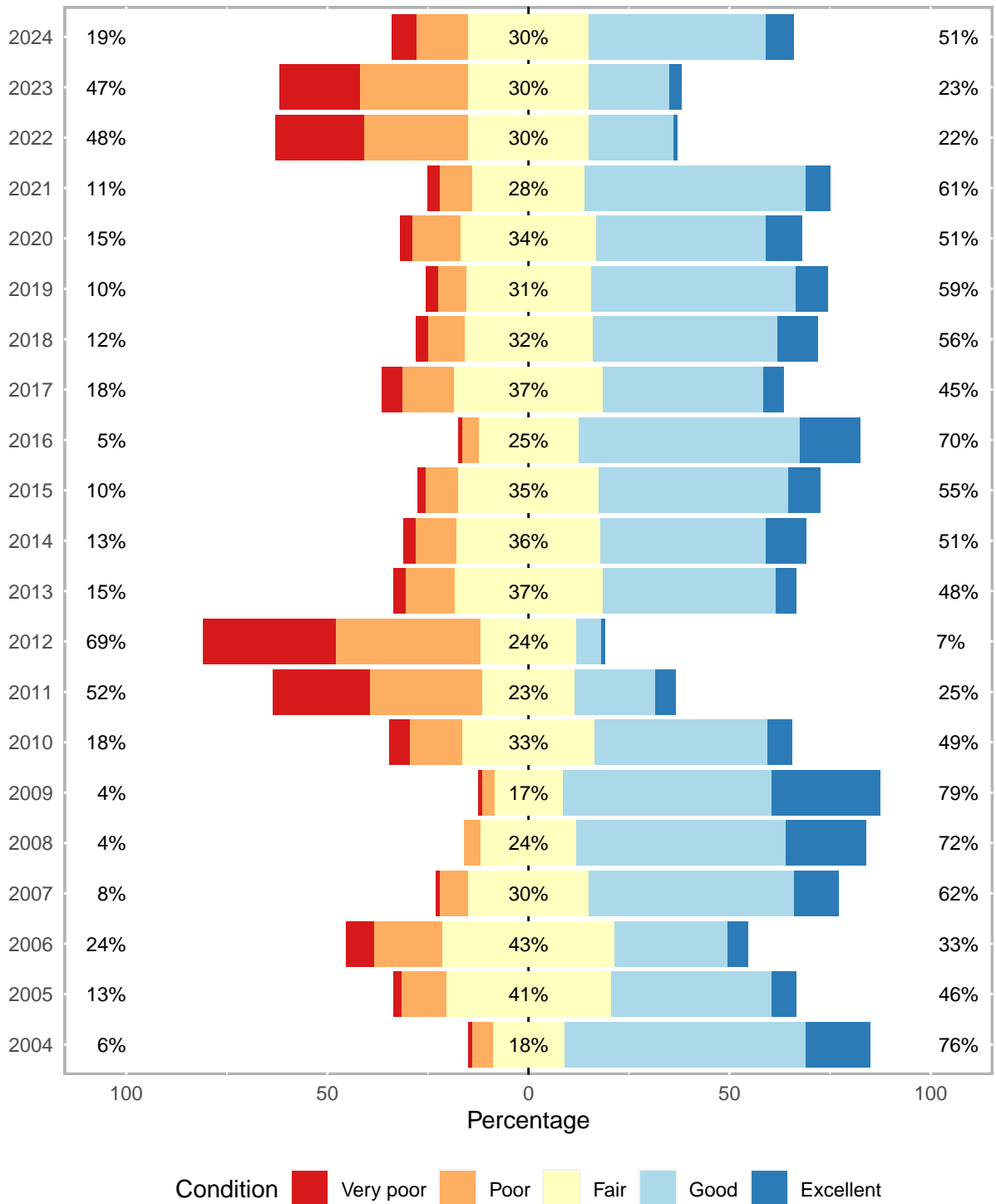


Figure 1: Condition of Kansas Soybeans Across Years for a Specific Week

Condition of Kansas Soybeans by Week for Current Year

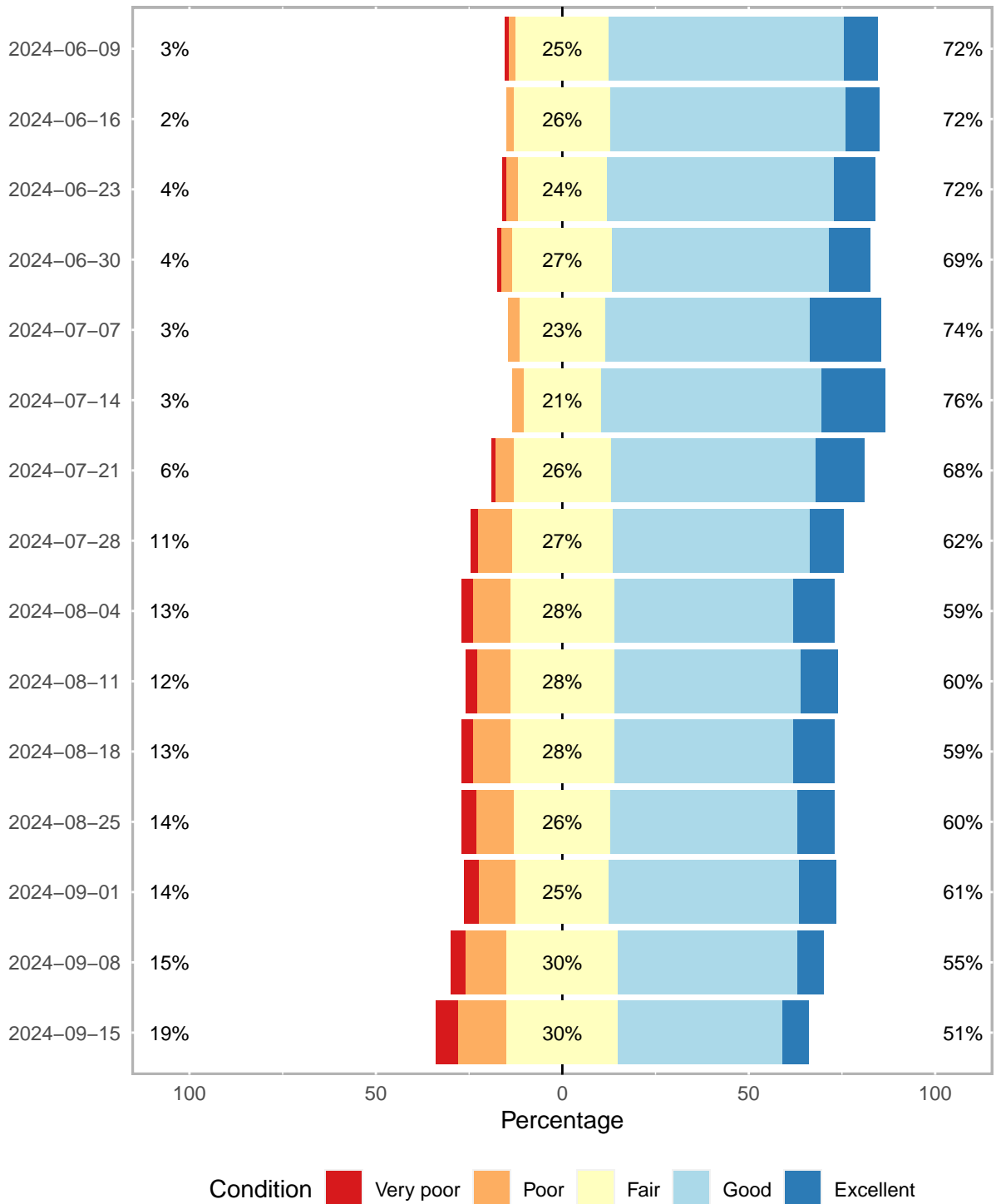


Figure 2: Condition of Kansas Soybeans for Each Week of Current Growing Season