

# Condition of Kansas Corn - Week #36 (9/8/24)

Gregg Ibendahl

September 10, 2024

## Introduction<sup>1</sup>

The USDA collects weekly crop conditions throughout the growing season. The crop is rated as either: very poor, poor, fair, good, or excellent. This is one of the few reports by the USDA that is collected and reported weekly. This article shows the historical crop condition for corn for a specific week in Kansas.

## Current corn condition in Kansas

Figure 1 uses a Likert scale to represent the corn crop condition as of 9/8/24. The graph shows the last 20 years. The red and orange portion of the bars show the percent of the state where the corn condition is very poor and poor. The total of these two categories is shown as the percent of the left-hand side. The blue areas of the bar represent the percent of the state where the corn condition is good and excellent. The total of these two categories is shown as the percent on the right-hand side. The middle section in yellow is the percent of corn in fair condition. This is the percentage shown in the middle of the page. The Likert graph is always centered on the fair category to make it easier to compare years.

Figure 2 uses a Likert scale to represent the corn crop condition for each week of the current year. While Figure 1 is a historical representation of the same week across time, Figure 2 represents different weeks of the current crop year.

Based on the data used to construct Figure 1, Ibendahl is currently estimating a state corn yield of 122.9 bu/ac with a confidence interval from 119.6 to 126.1 bu/ac. This state average corn yield is 2.9 bu/ac lower than last week. For comparison, USDA/NASS is estimating a state yield of 128 bu/ac.

---

<sup>1</sup>Kansas State University - Department of Agricultural Economics  
AgManager.info  
email: [ibendahl@ksu.edu](mailto:ibendahl@ksu.edu)  
YouTube: [https://www.youtube.com/@little\\_pond\\_farm](https://www.youtube.com/@little_pond_farm)  
Substack: <https://agricultural.substack.com>

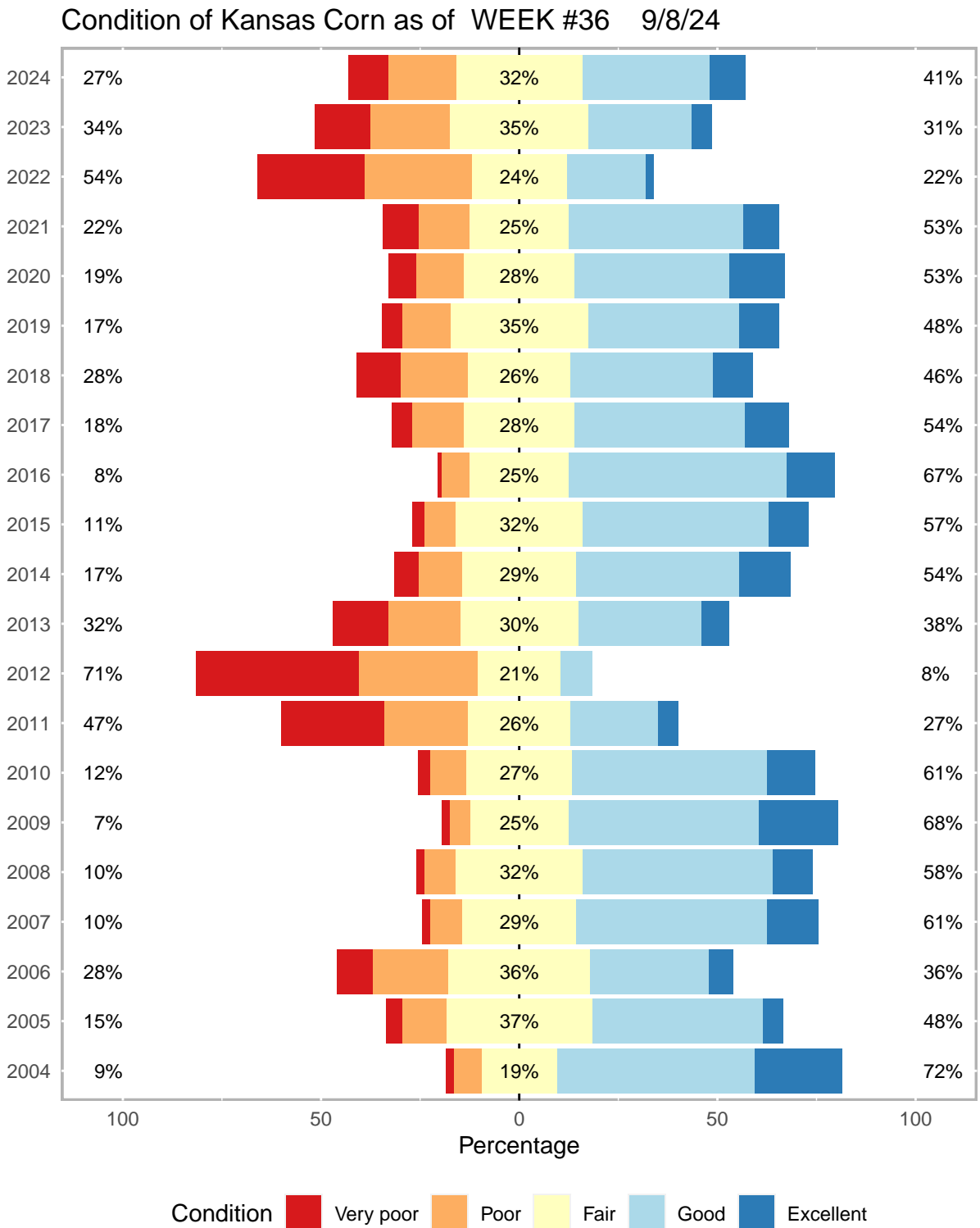


Figure 1: Condition of Kansas Corn Across Years for a Specific Week

### Condition of Kansas Corn by Week for Current Year

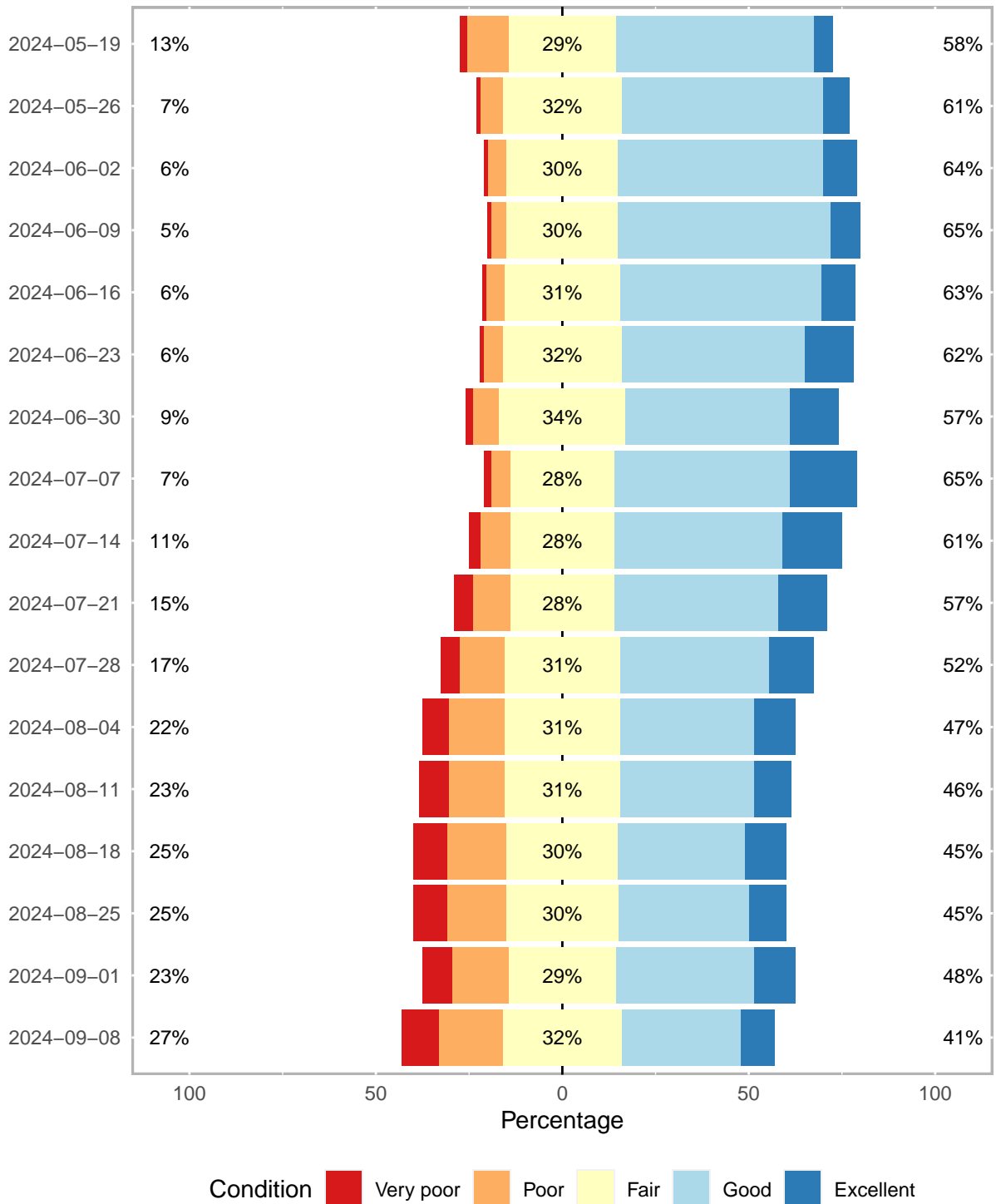


Figure 2: Condition of Kansas Corn for Each Week of Current Growing Season