

Corn Outlook



Aug. 14, 2018

Chad Hart

Associate Professor/Crop Marketing Specialist

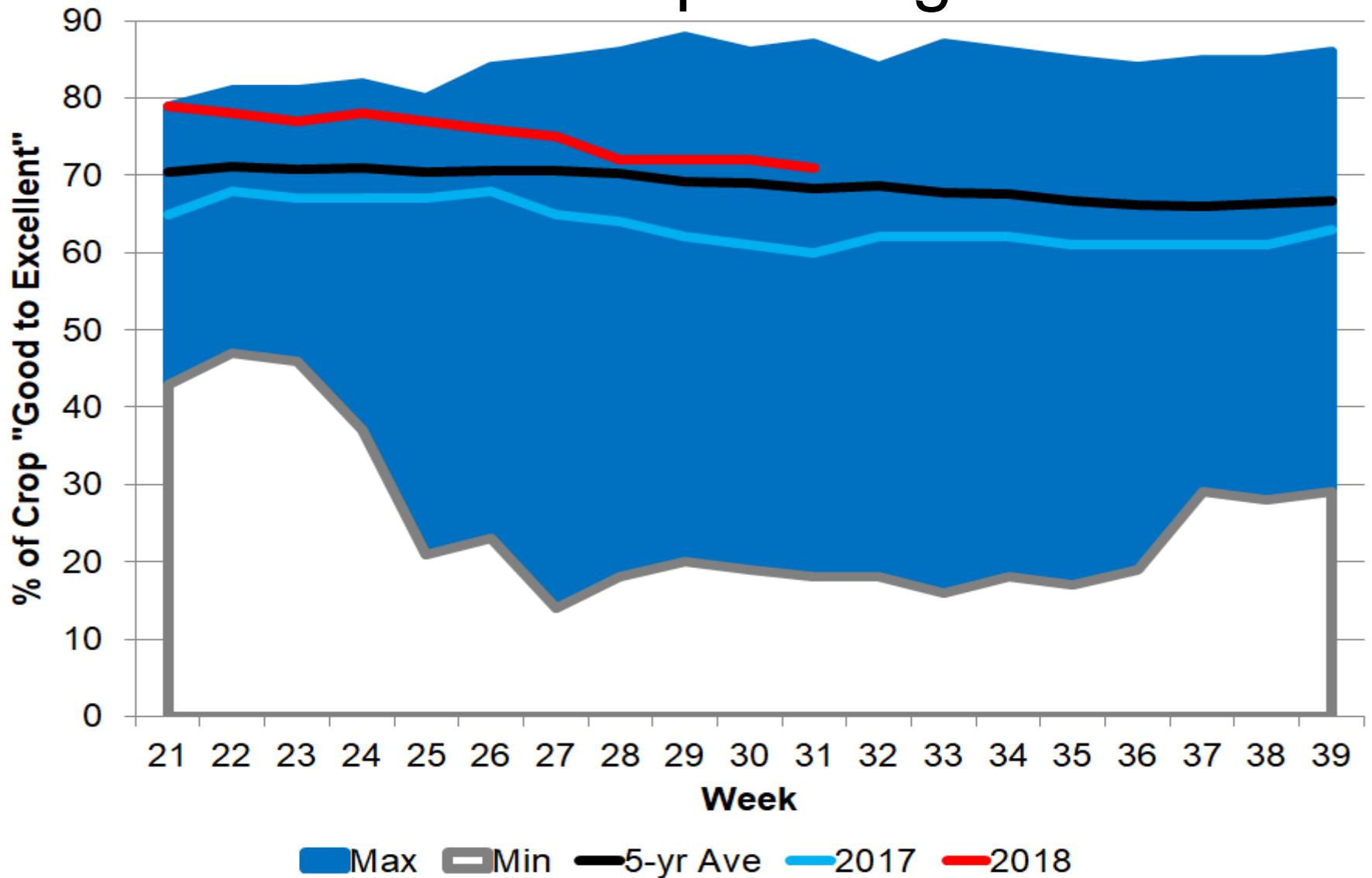
chart@iastate.edu

515-294-9911

U.S. Corn Supply and Use

		2015	2016	2017	2018	Δ2018
Area Planted	(mil. acres)	88.0	94.0	90.2	89.1	0.0
Yield	(bu./acre)	168.4	174.6	176.6	178.4	4.4
Production	(mil. bu.)	13,602	15,148	14,604	14,586	356
Beg. Stocks	(mil. bu.)	1,731	1,737	2,293	2,027	0
Imports	(mil. bu.)	67	57	40	50	0
Total Supply	(mil. bu.)	15,401	16,942	16,937	16,664	356
Feed & Residual	(mil. bu.)	5,120	5,470	5,450	5,525	100
Ethanol	(mil. bu.)	5,224	5,432	5,600	5,625	0
Food, Seed, & Other	(mil. bu.)	1,422	1,453	1,460	1,480	0
Exports	(mil. bu.)	1,898	2,294	2,400	2,350	125
Total Use	(mil. bu.)	13,664	14,649	14,910	14,980	225
Ending Stocks	(mil. bu.)	1,737	2,293	2,027	1,684	132
Season-Average Price	(\$/bu.)	3.61	3.36	3.40	3.60	-0.20

Corn Crop Ratings



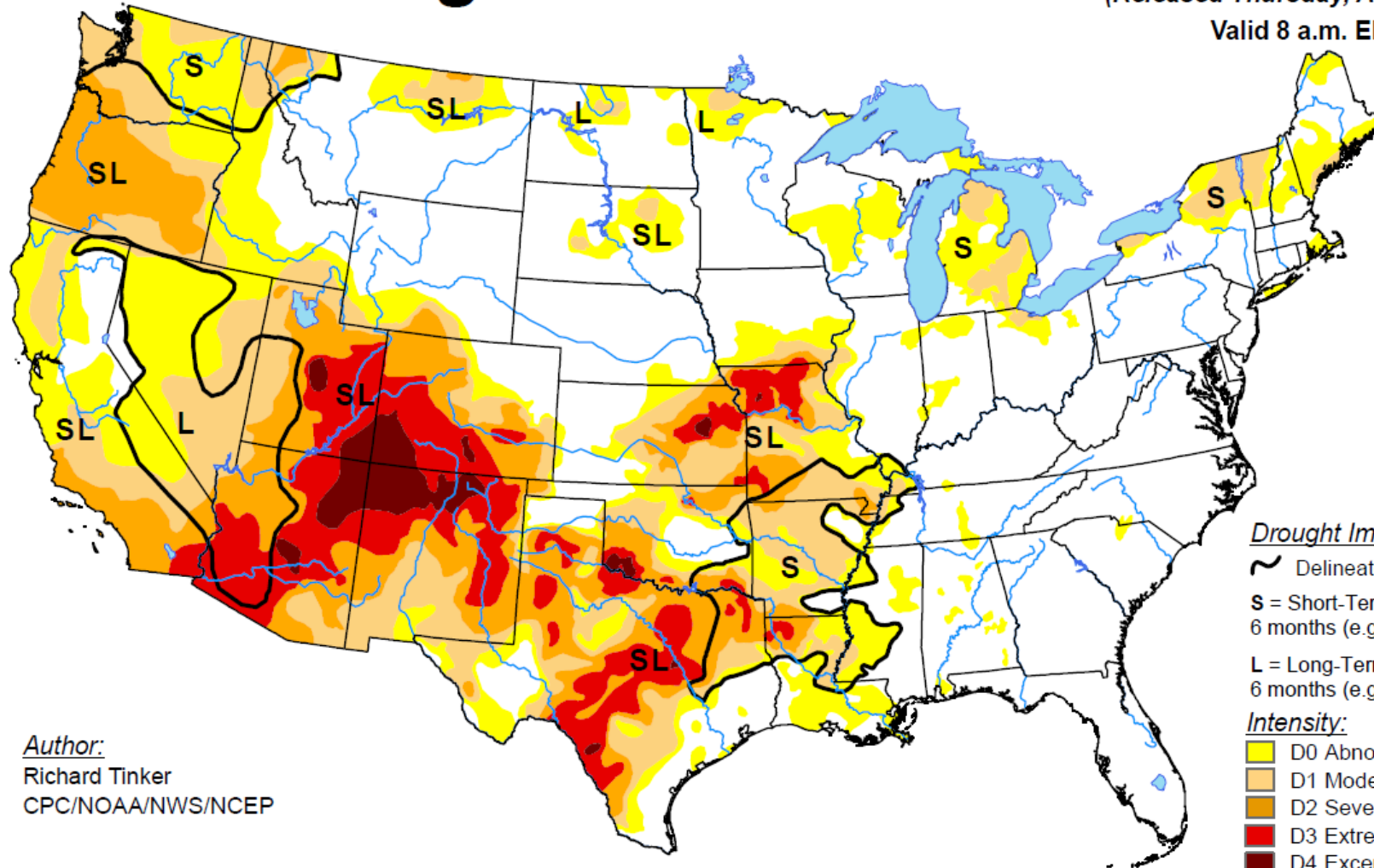
Drought Monitor

U.S. Drought Monitor

August 7, 2018

(Released Thursday, Aug. 9, 2018)

Valid 8 a.m. EDT



Drought Impact Types:

~ Delineates dominant impacts

S = Short-Term, typically less than 6 months (e.g. agriculture, grasslands)

L = Long-Term, typically greater than 6 months (e.g. hydrology, ecology)

Intensity:

Yellow D0 Abnormally Dry

Light Orange D1 Moderate Drought

Dark Orange D2 Severe Drought

Red D3 Extreme Drought

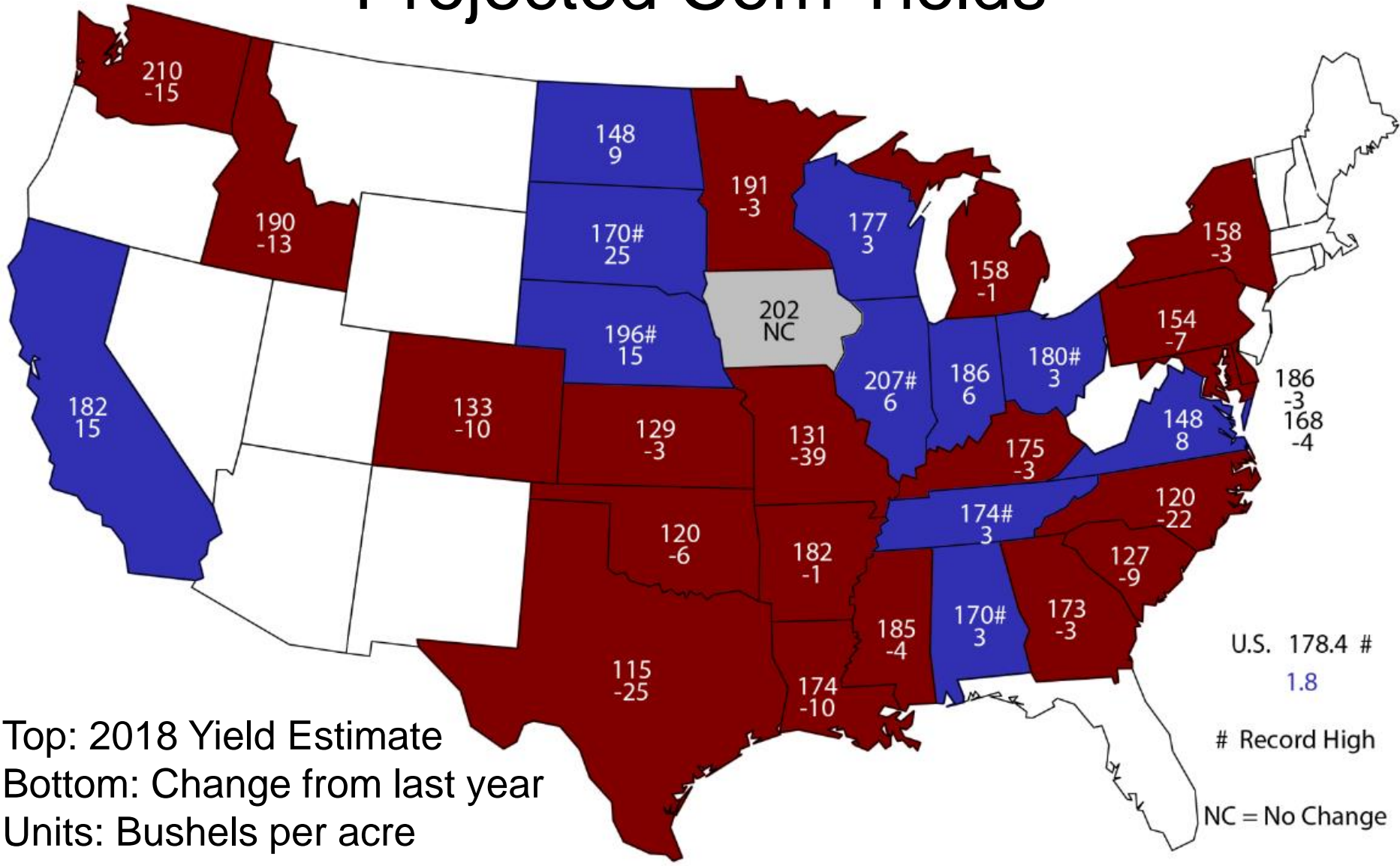
Dark Red D4 Exceptional Drought

Author:

Richard Tinker

CPC/NOAA/NWS/NCEP

Projected Corn Yields



Top: 2018 Yield Estimate
Bottom: Change from last year
Units: Bushels per acre

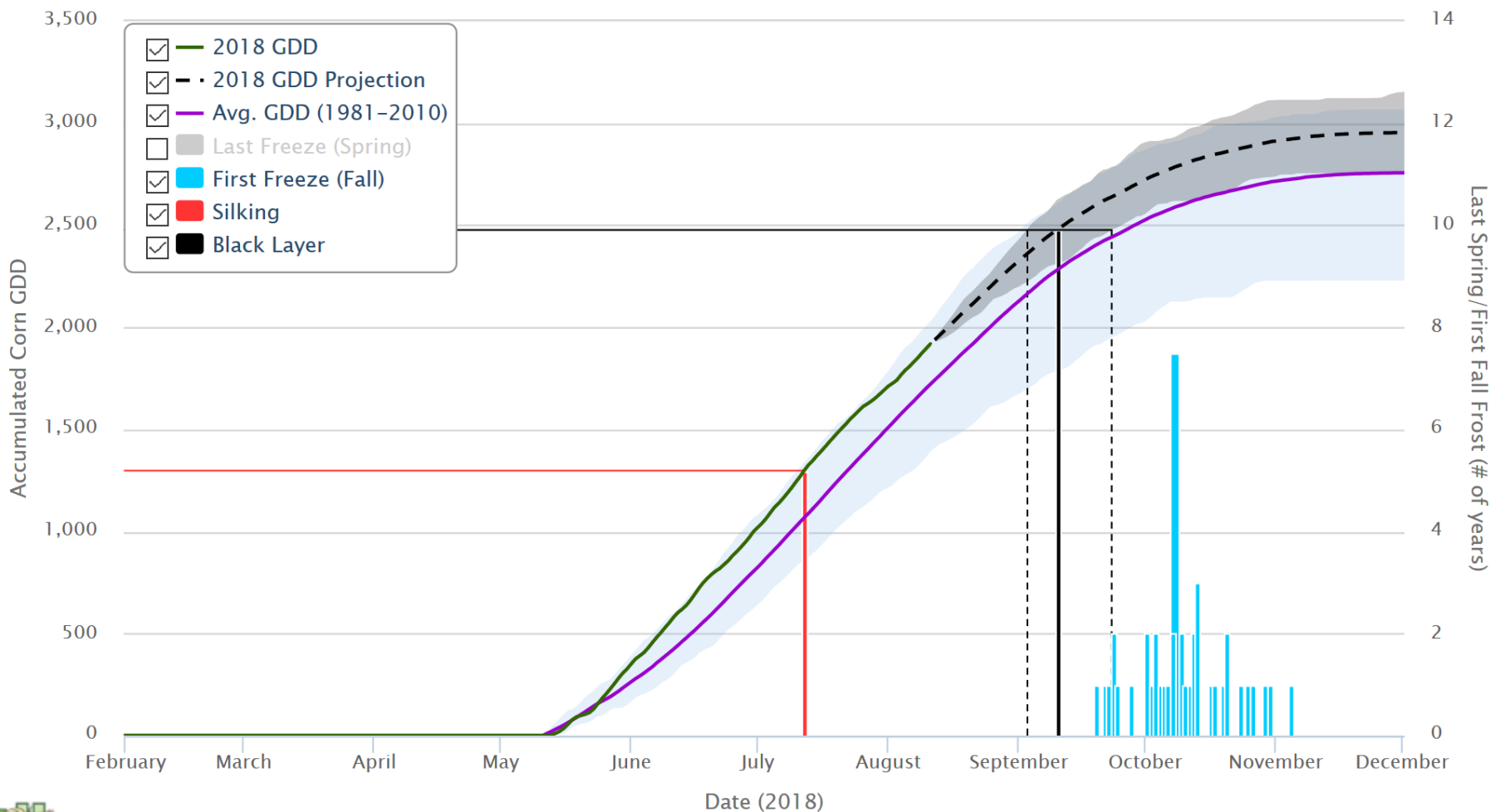
U.S. 178.4 #
1.8
Record High
NC = No Change

Growing Degree Days

Corn Growing Degree Day Tool

Chart Options

Location: 43.37, -96.11 in Lyon Co., IA, Start Date: May 11, Maturity Days: 103, Freeze Temp: 28°F, Variation: All Years



GDD Base 50/86 (degrees F); Created: 08/12/2018

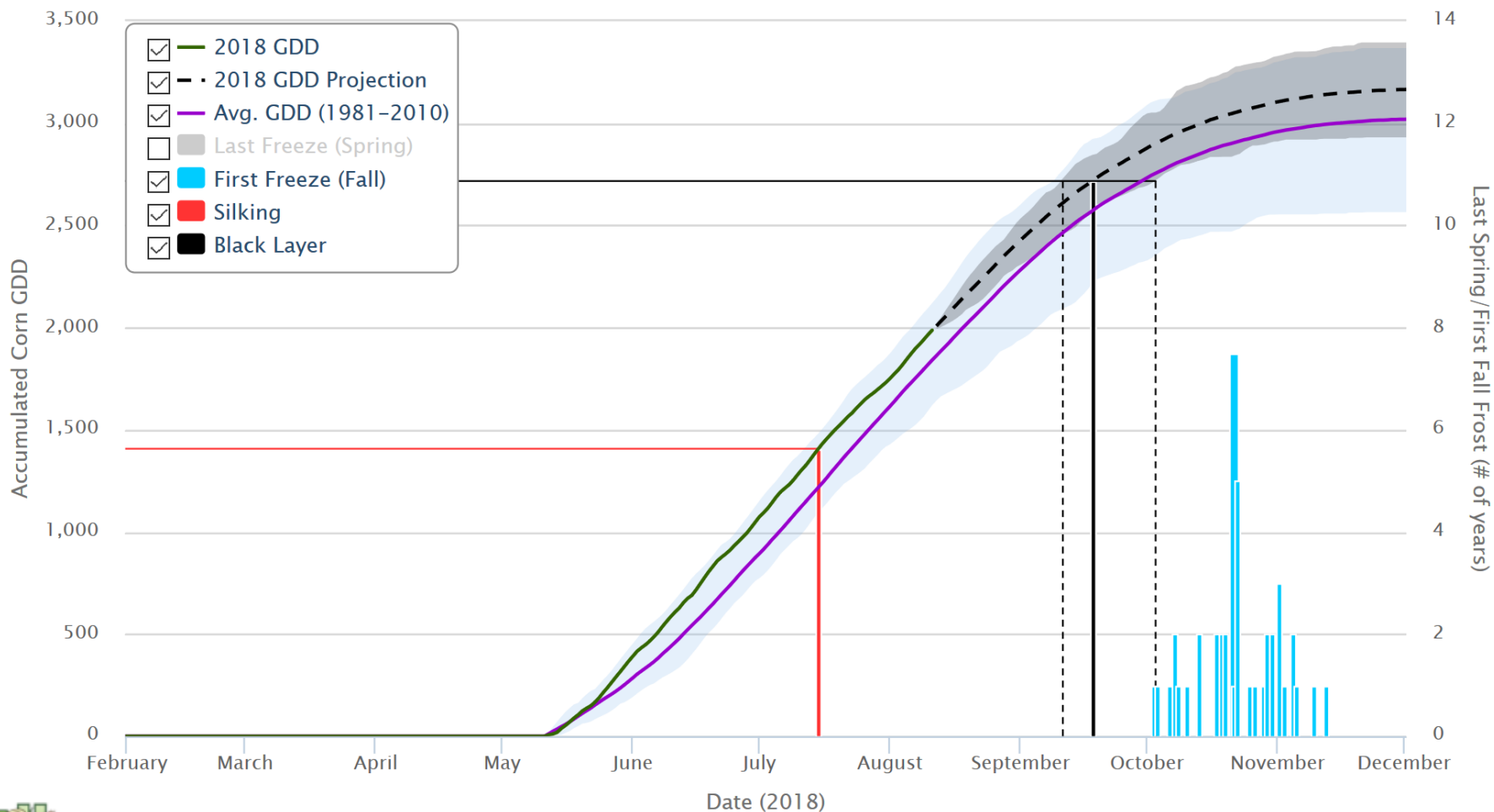


Growing Degree Days

Corn Growing Degree Day Tool

☰ Chart Options

Location: 41.32, -91.67 in Washington Co., IA, Start Date: May 11, Maturity Days: 113, Freeze Temp: 28°F, Variation: All Years



GDD Base 50/86 (degrees F); Created: 08/12/2018

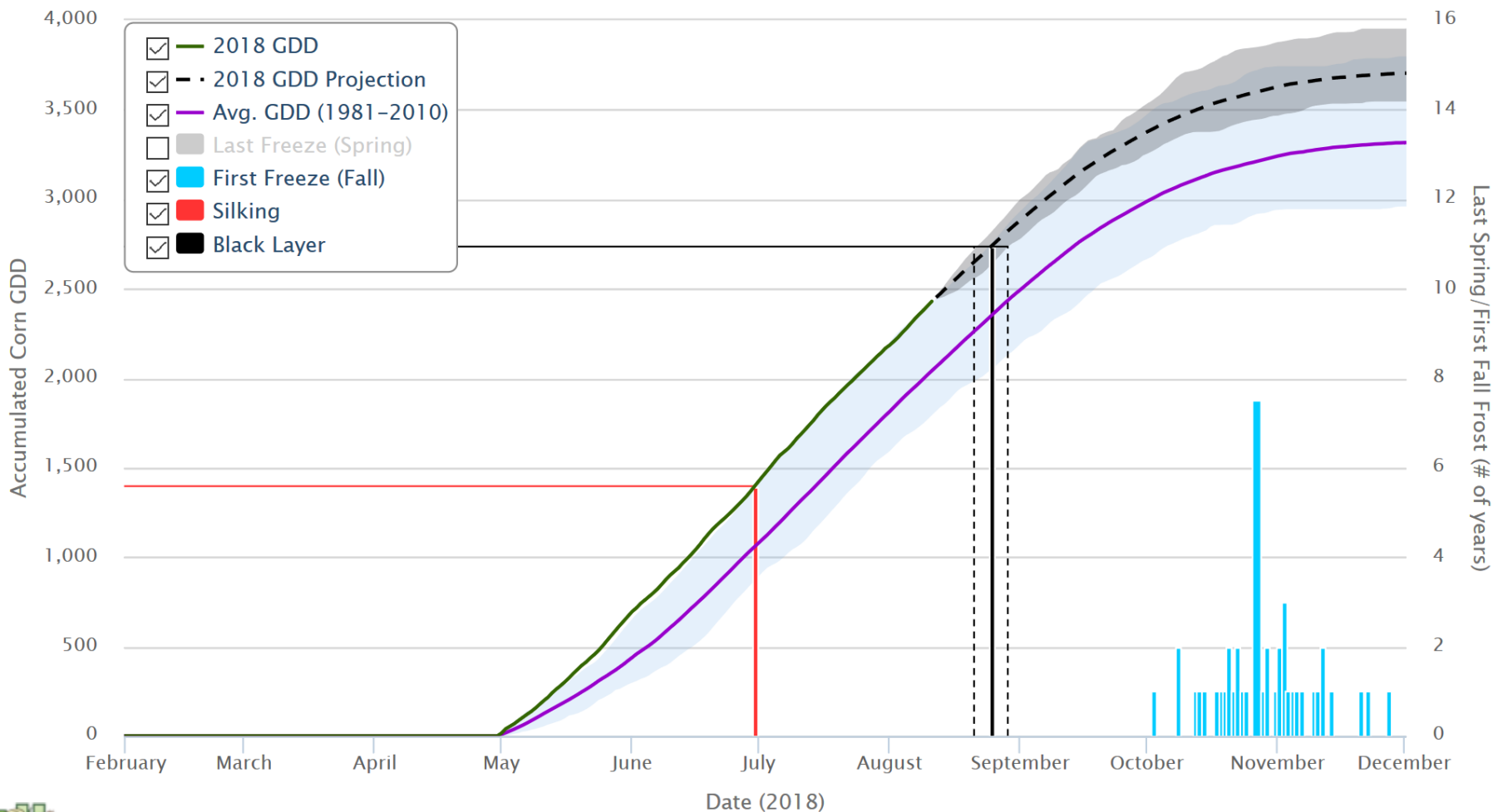


Growing Degree Days

Corn Growing Degree Day Tool

Chart Options

Location: 40.21, -88.20 in Champaign Co., IL, Start Date: April 30, Maturity Days: 113, Freeze Temp: 28°F, Variation: All Years



GDD Base 50/86 (degrees F); Created: 08/12/2018

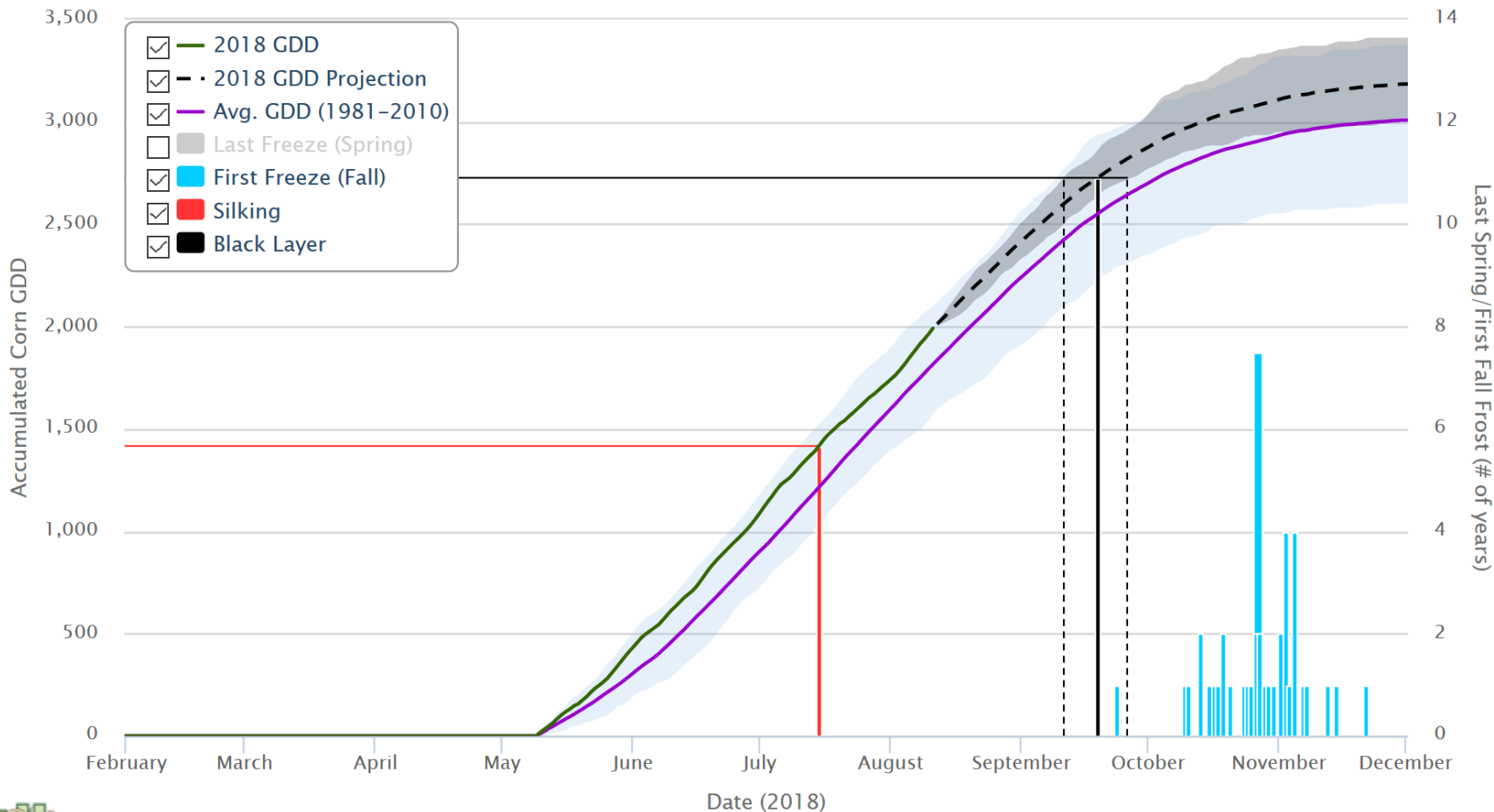


Growing Degree Days

Corn Growing Degree Day Tool

Chart Options

Location: 40.17, -84.99 in Randolph Co., IN, Start Date: May 9, Maturity Days: 113, Freeze Temp: 28°F, Variation: All Years



GDD Base 50/86 (degrees F); Created: 08/12/2018

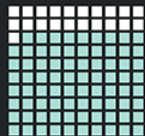


World Corn Production

Country or Region	2017/2018		2018/2019		
	Estimate	Change from July 12	Forecast	Change from July 12	Change from 2017/2018
----- Million Tons -----					
World	1,033.3	-0.4	1,061.1	6.8	27.8
United States	371.0	--	370.5	9.1	-0.4
Foreign	662.3	-0.4	690.5	-2.3	28.2
Argentina	33.0	--	41.0	--	8.0
Brazil	83.0	-0.5	94.5	-1.5	11.5
Mexico	26.8	--	26.0	--	-0.8
Canada	14.1	--	14.8	--	0.7
European Union	62.3	0.1	59.8	-1.7	-2.5
Serbia	4.0	--	6.6	0.6	2.6
FSU-12	42.1	--	47.7	1.2	5.6
Ukraine	24.1	--	31.0	1.0	6.9
Russia	13.2	--	12.0	--	-1.2
South Africa	13.8	--	13.5	-0.5	-0.3
China	215.9	--	225.0	--	9.1
India	26.9	--	26.0	--	-0.9

Percentage of U.S. Agricultural Production Exported

Walnuts



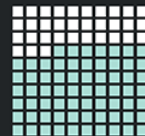
79%

Cotton



76%

Almonds



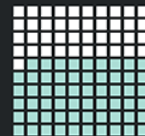
67%

Pistachios



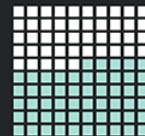
62%

Sorghum



59%

Rice



55%

Soybeans



50%

Wheat



46%

Grapes



36%

Pork



21%

> 20%

Overall U. S. farmers export more than 20% of what they produce

Corn*



21%

Cherries



19%

Apples



18%

Poultry



16%

Dairy



15%

Beef



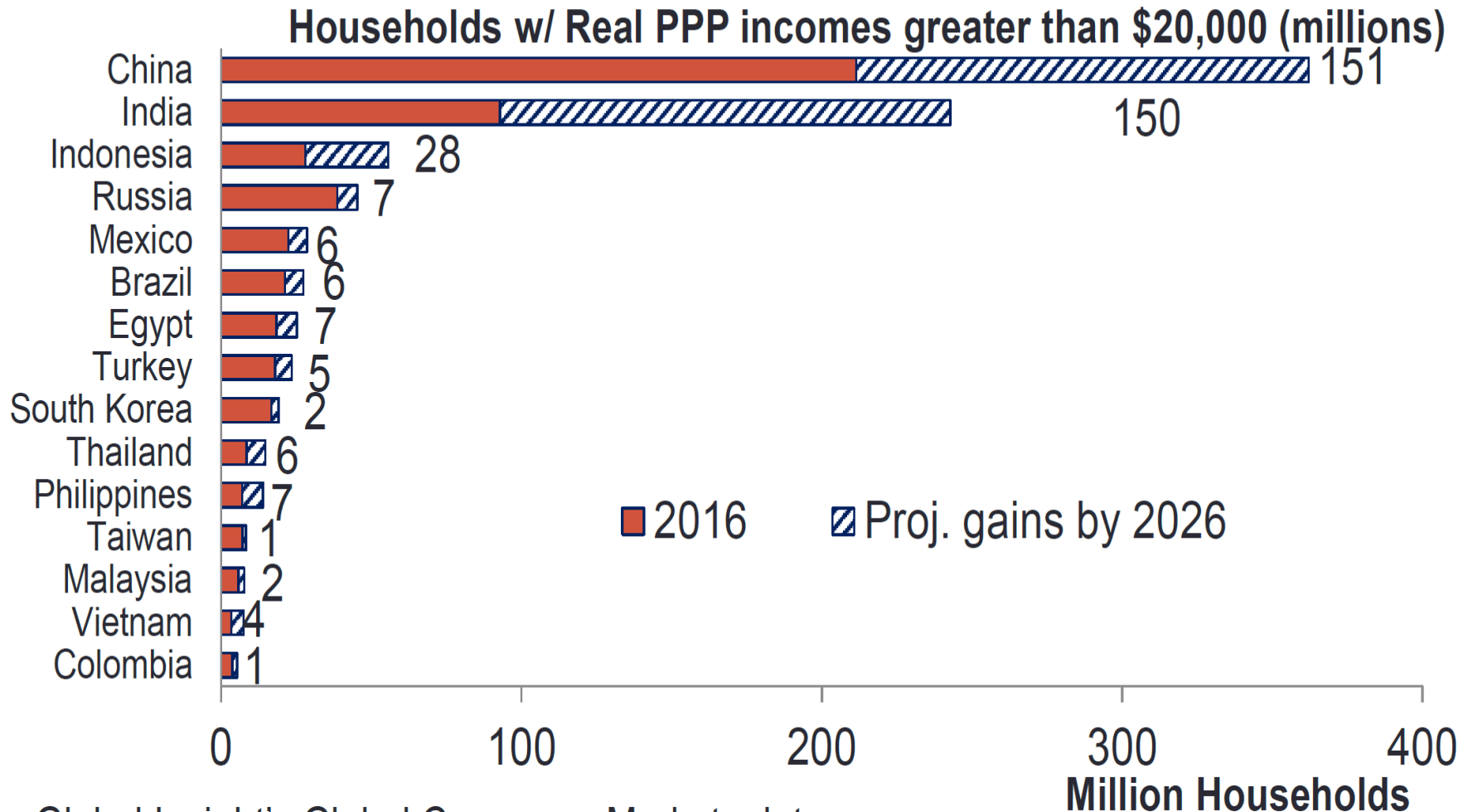
10%

*Including ethanol, DDGS, and HFCS exports

Source: USDA-Foreign Agricultural Service, Production, Supply and Distribution System

Reference years: Marketing Year 2015/16 - 2017/18

Income growth will drive increased global demand

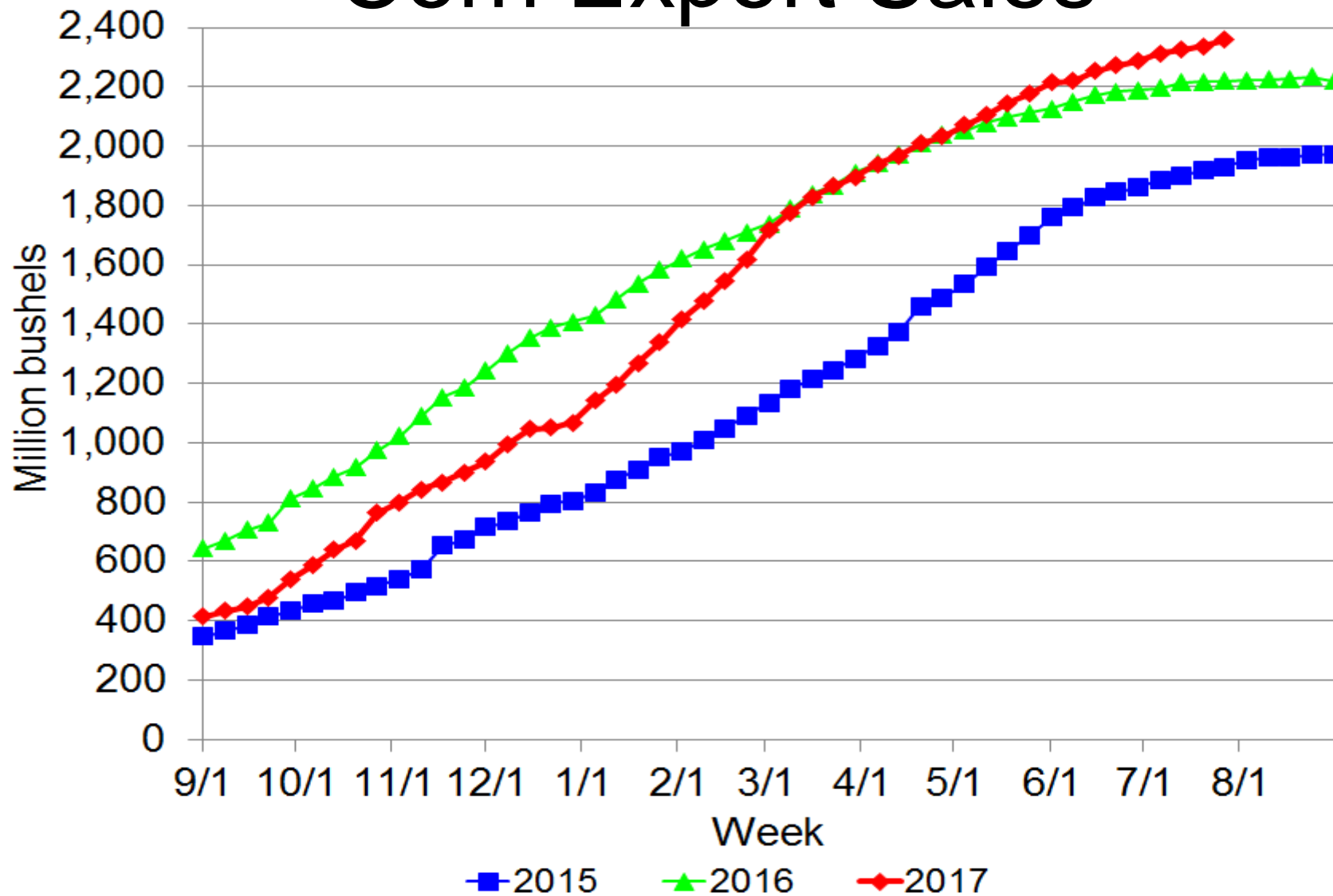


Data: Global Insight's Global Consumer Markets data.

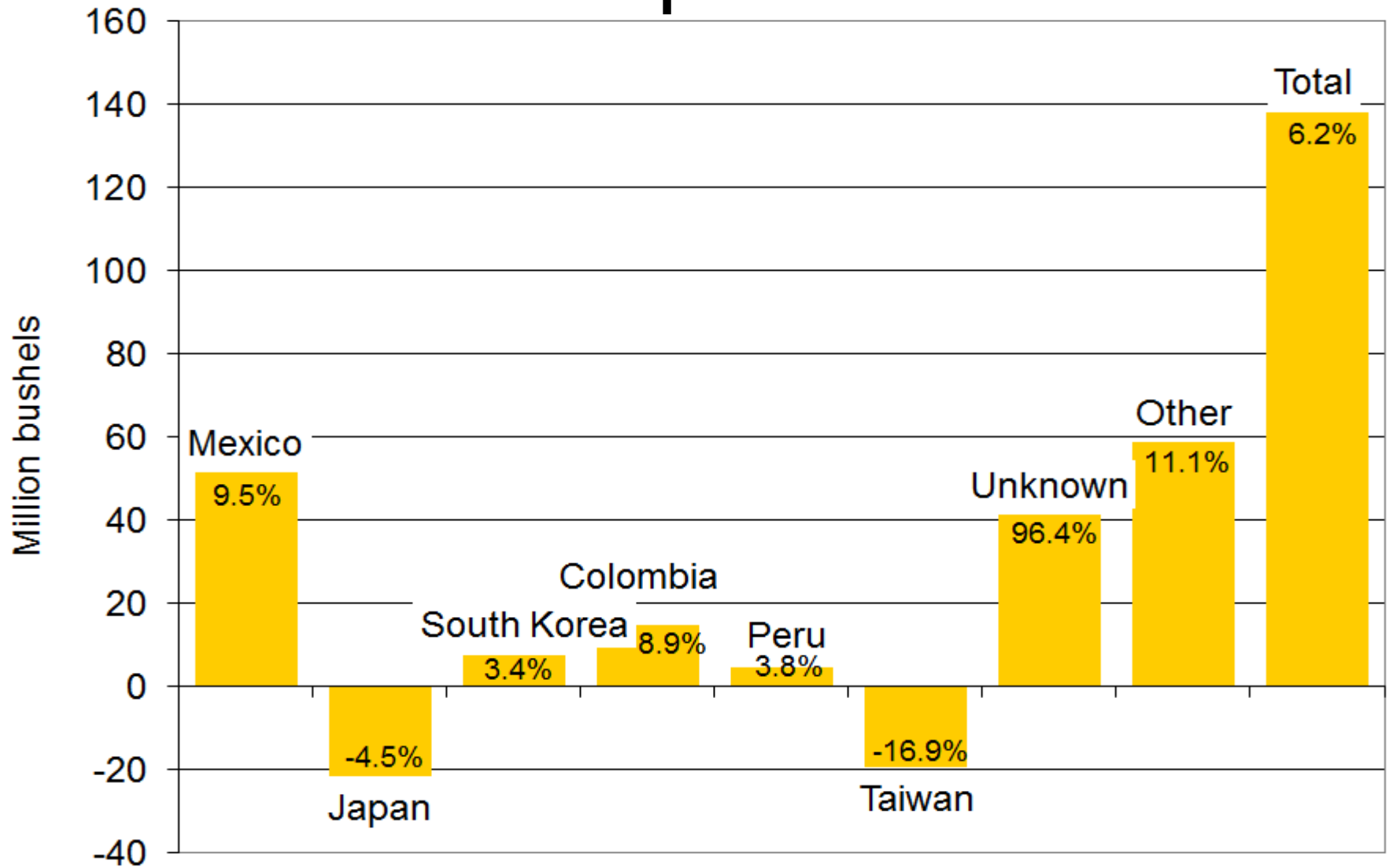
U.S. Meat Production & Prices

Item	2018		2019		
	Estimate	Change from July 12	Forecast	Change from July 12	Change from 2018
Production	----- <i>Billion Pounds</i> -----				
Beef	27.09	-0.06	27.72	0.03	0.63
Pork	26.71	-0.04	27.88	0.18	1.17
Broilers	42.62	0.12	43.42	0.06	0.81
Turkey	5.94	**	5.97	--	0.03
Total Meat	103.12	0.03	105.75	0.26	2.63
Prices	----- <i>Dollars per cwt</i> -----				
Steers	115.83	--	117.75	--	1.92
Hogs	44.26	-1.00	40.75	-1.25	-3.51
	----- <i>Cents per pound</i> -----				
Broilers	100.2	-3.0	99.8	-1.3	-0.4
Turkey	82.2	--	87.5	--	5.3

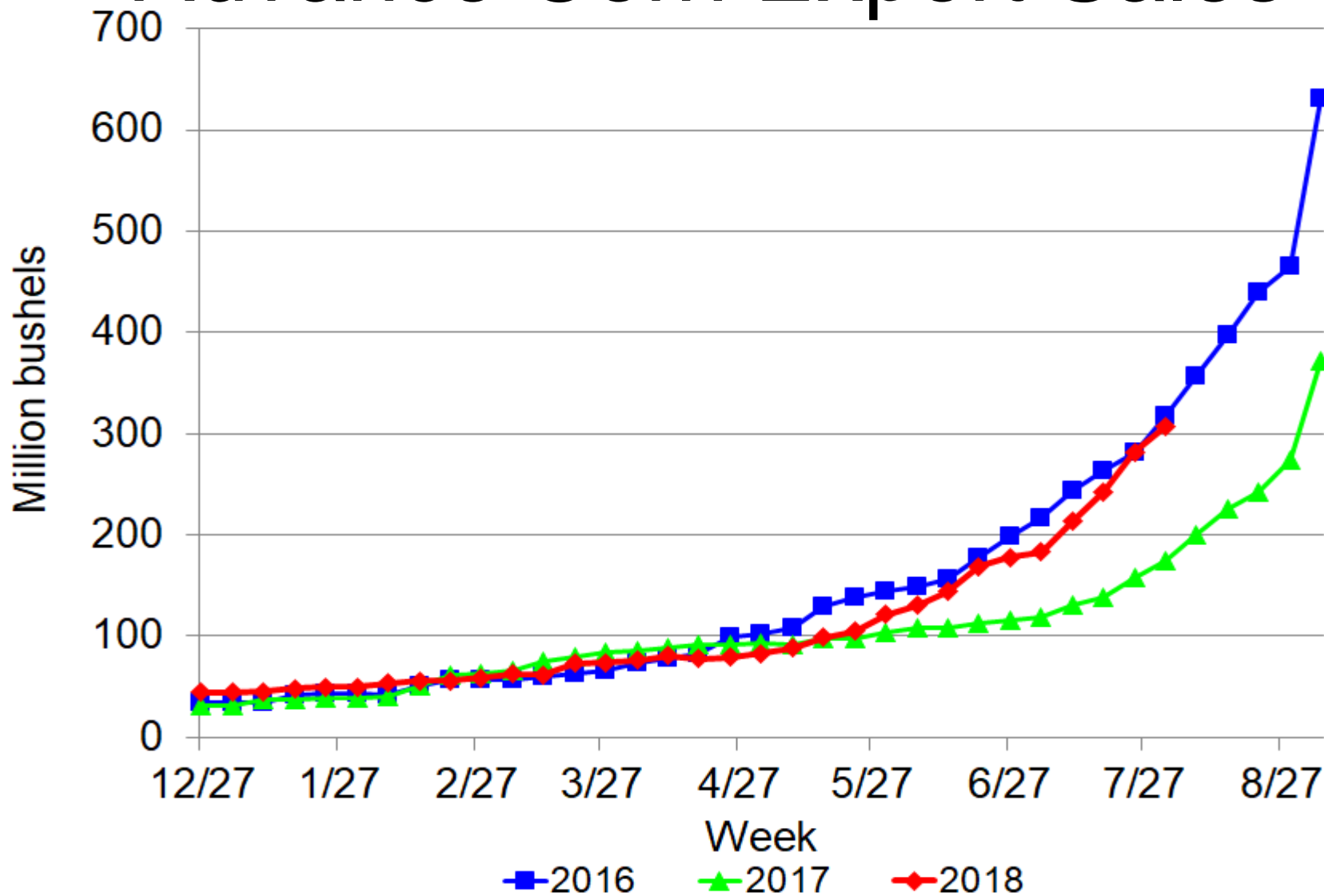
Corn Export Sales



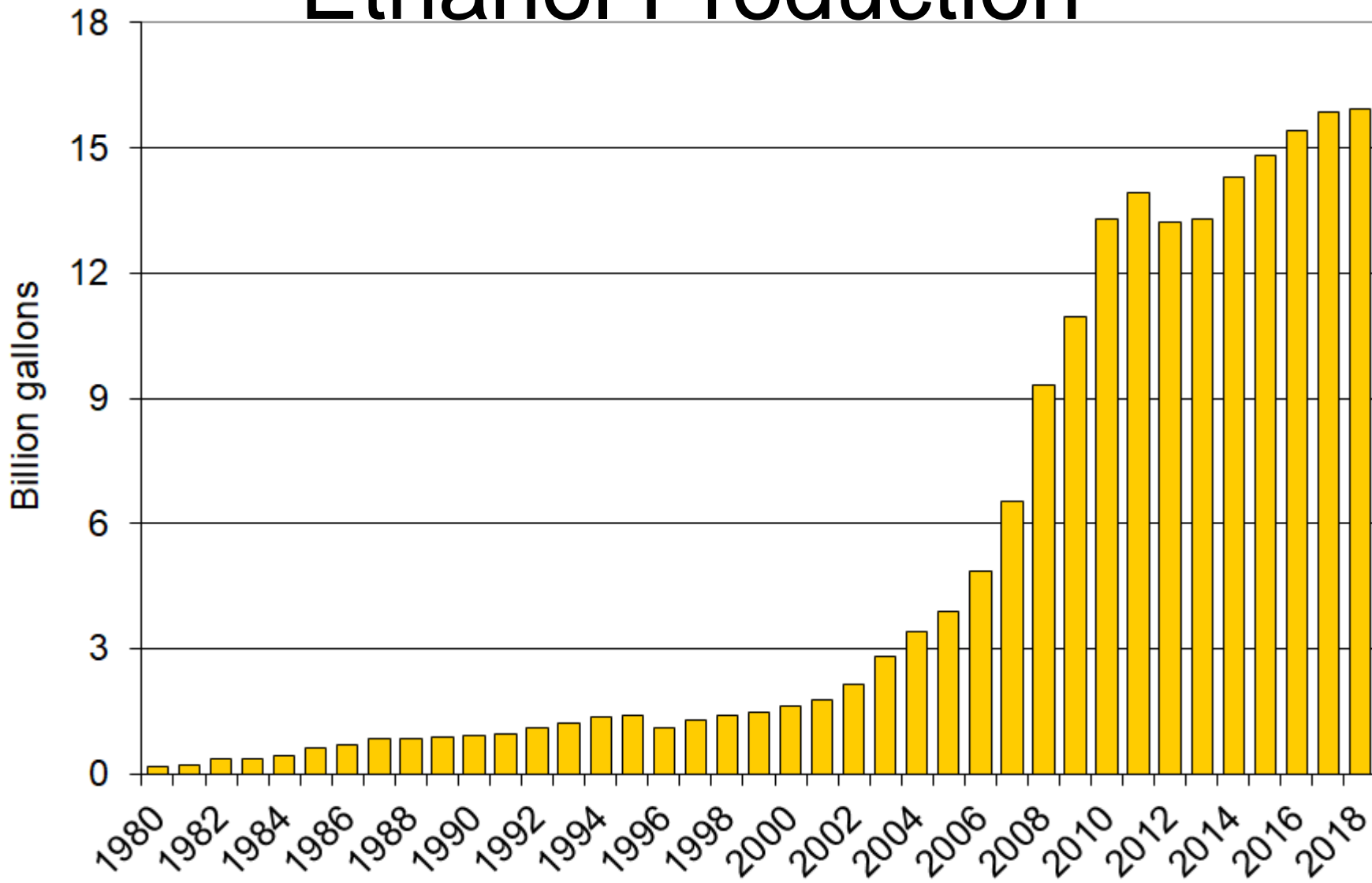
Corn Export Shifts



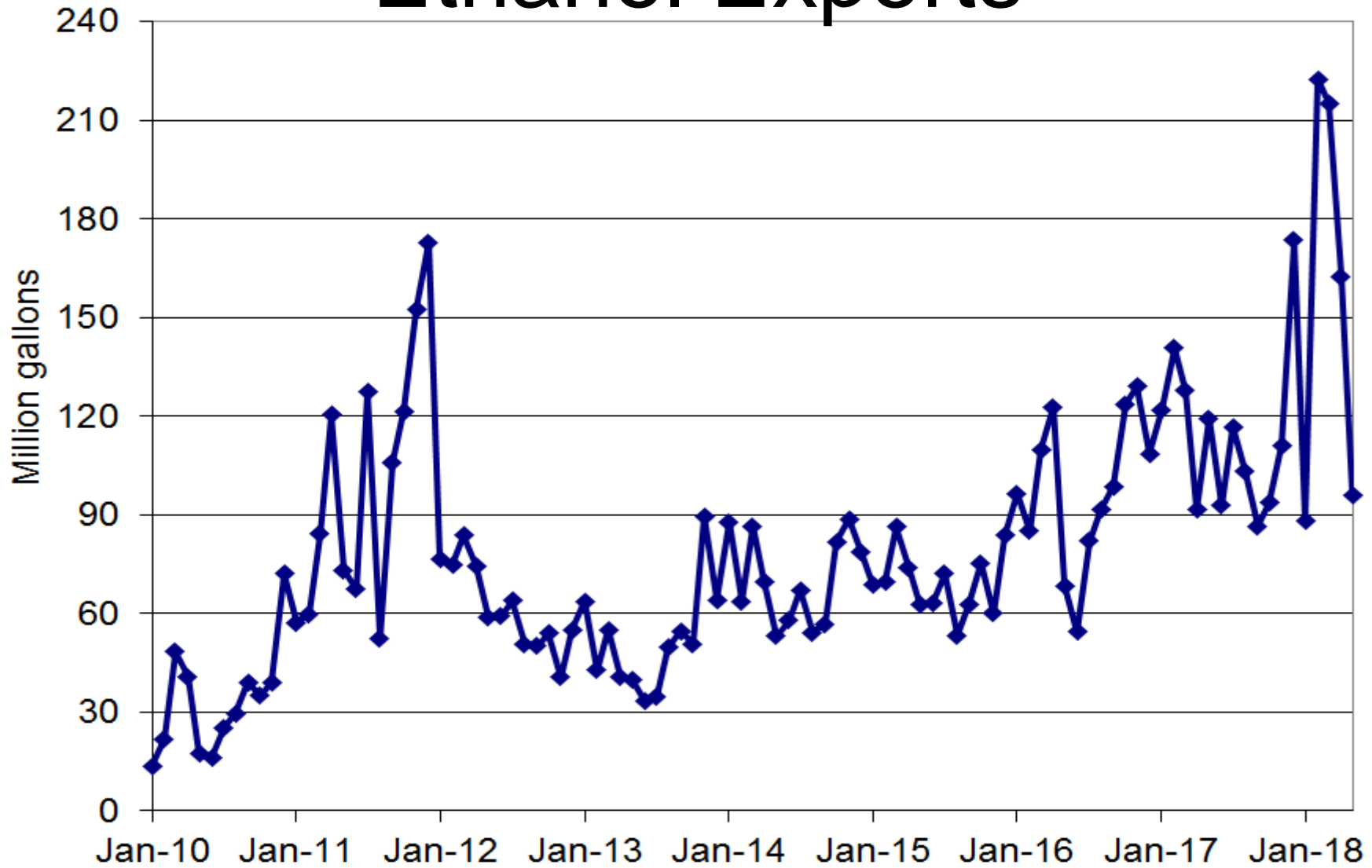
Advance Corn Export Sales



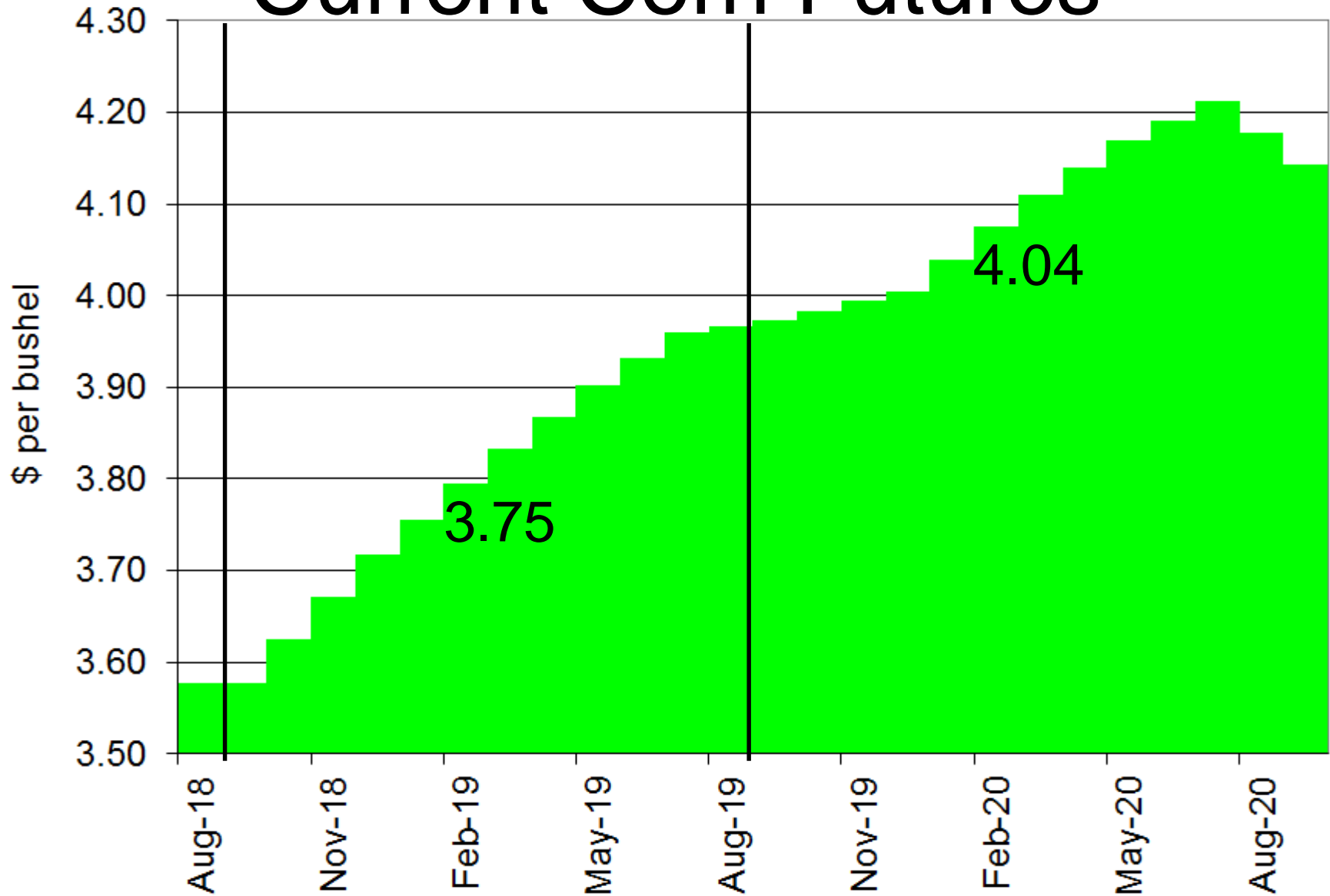
Ethanol Production



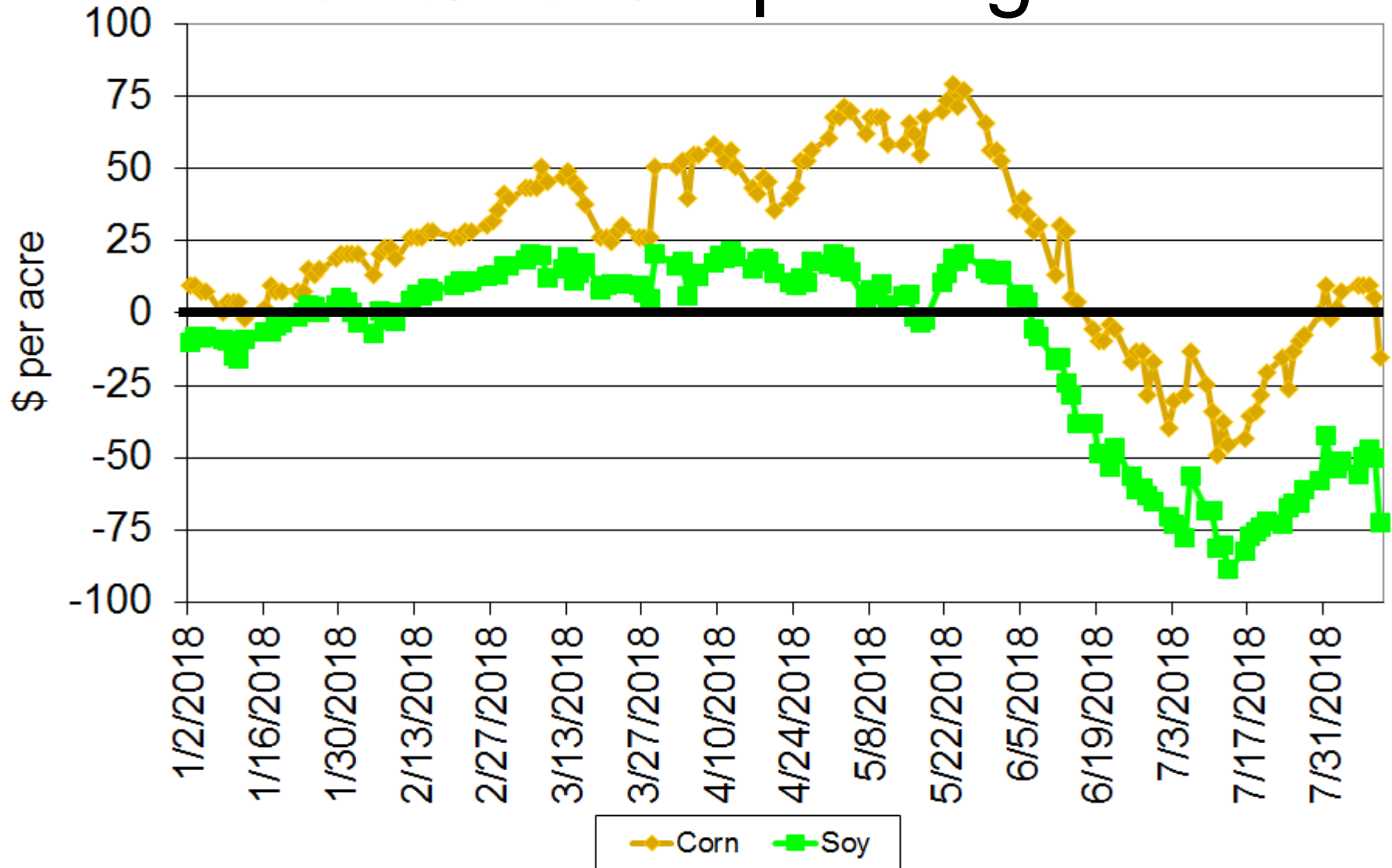
Ethanol Exports



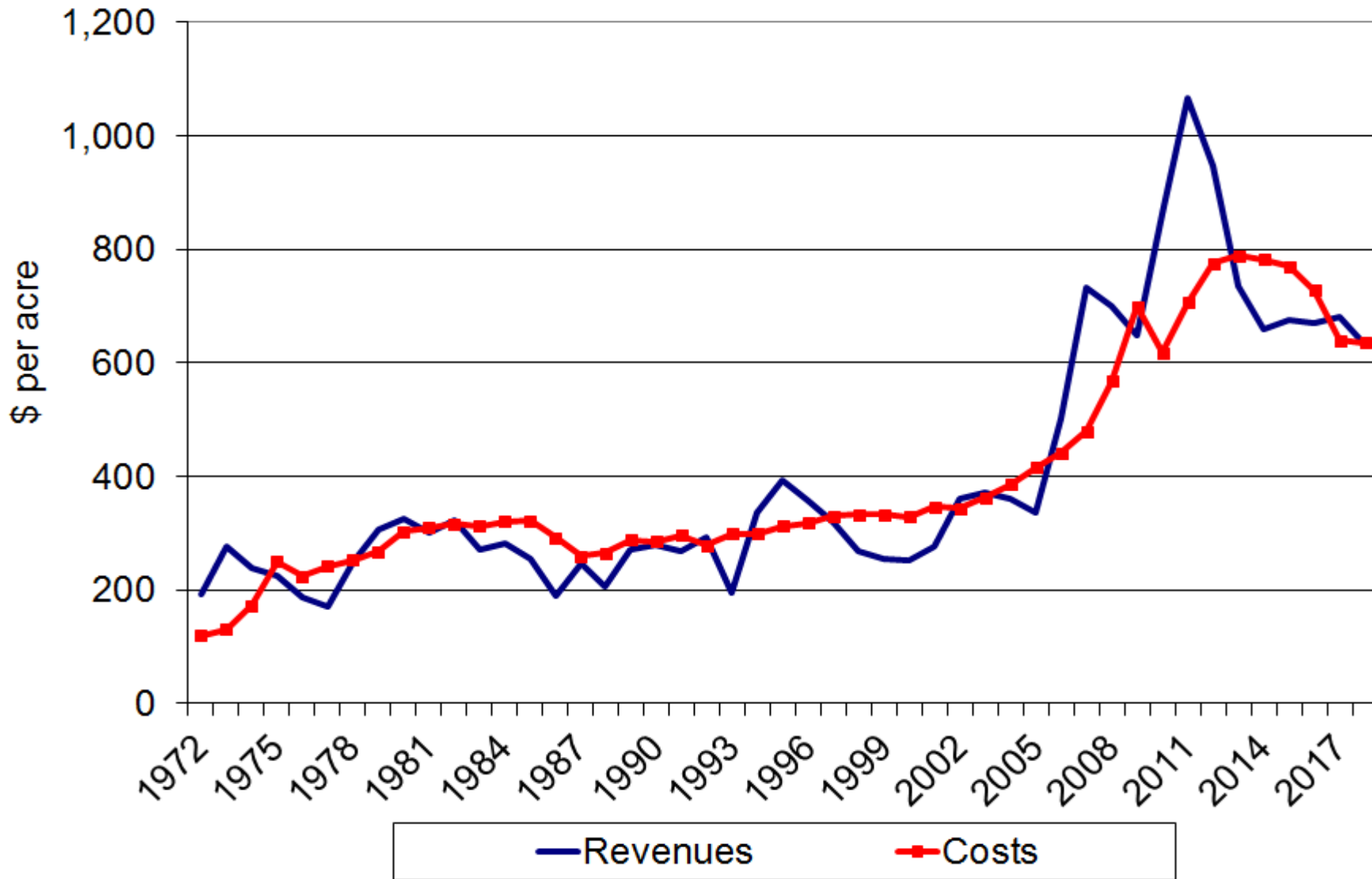
Current Corn Futures



2018/19 Crop Margins



Iowa Corn Revenues vs. Costs



Want to provide feedback on my
presentation?

<https://www.surveymonkey.com/r/ChadHart>

Thank you for your time!

Any questions?

My web site:

<http://www2.econ.iastate.edu/faculty/hart/>

Iowa Farm Outlook:

<http://www2.econ.iastate.edu/ifo/>

Ag Decision Maker:

<http://www.extension.iastate.edu/agdm/>