

2018/19 Canola & Sunflower Market Outlook & Strategies

Frayne Olson, PhD

*Crop Economist/Marketing Specialist
Director – Burdick Center for Cooperatives
frayne.olson@ndsu.edu 701-231-7377 (o) 701-715-3673 (c)*

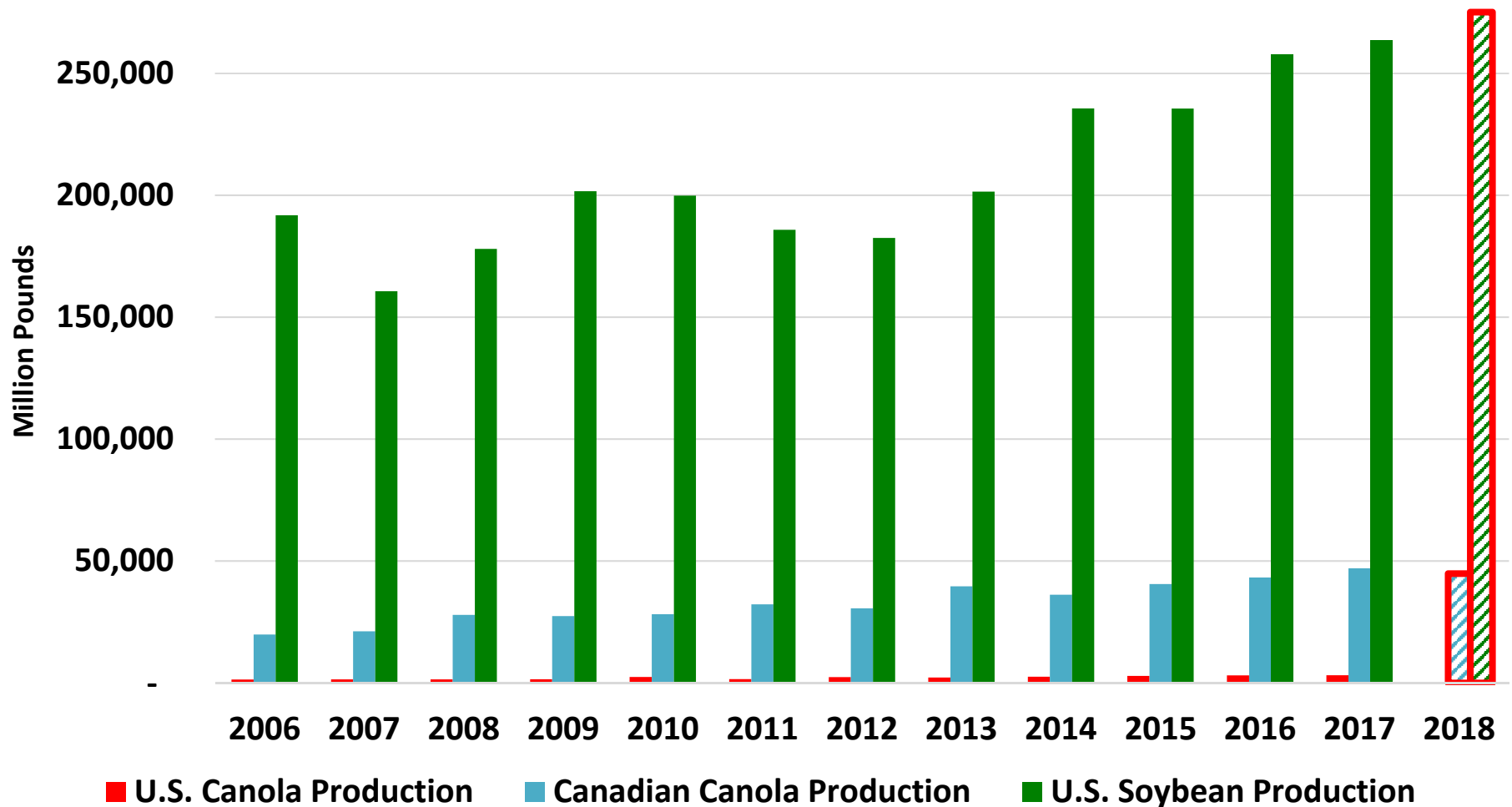
NDSU Extension Service
ND Agricultural Experiment Station
Dept. of Agribusiness & Applied Economics

EXTENDING KNOWLEDGE >> CHANGING LIVES

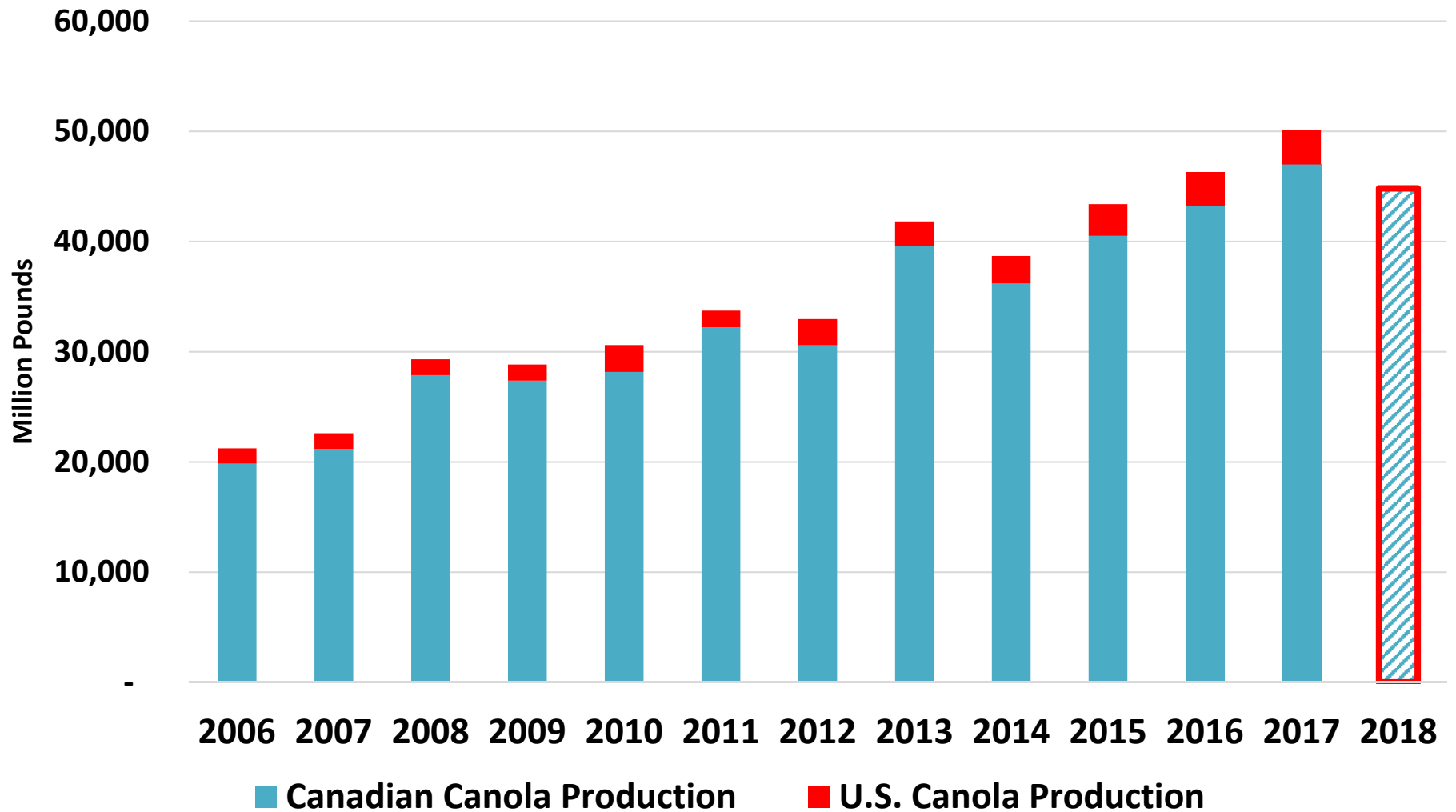
NDSU

EXTENSION

Canadian Canola, U.S. Canola and U.S. Soybean Production



Canadian Canola vs. U.S. Canola Production



Review of Canadian Canola

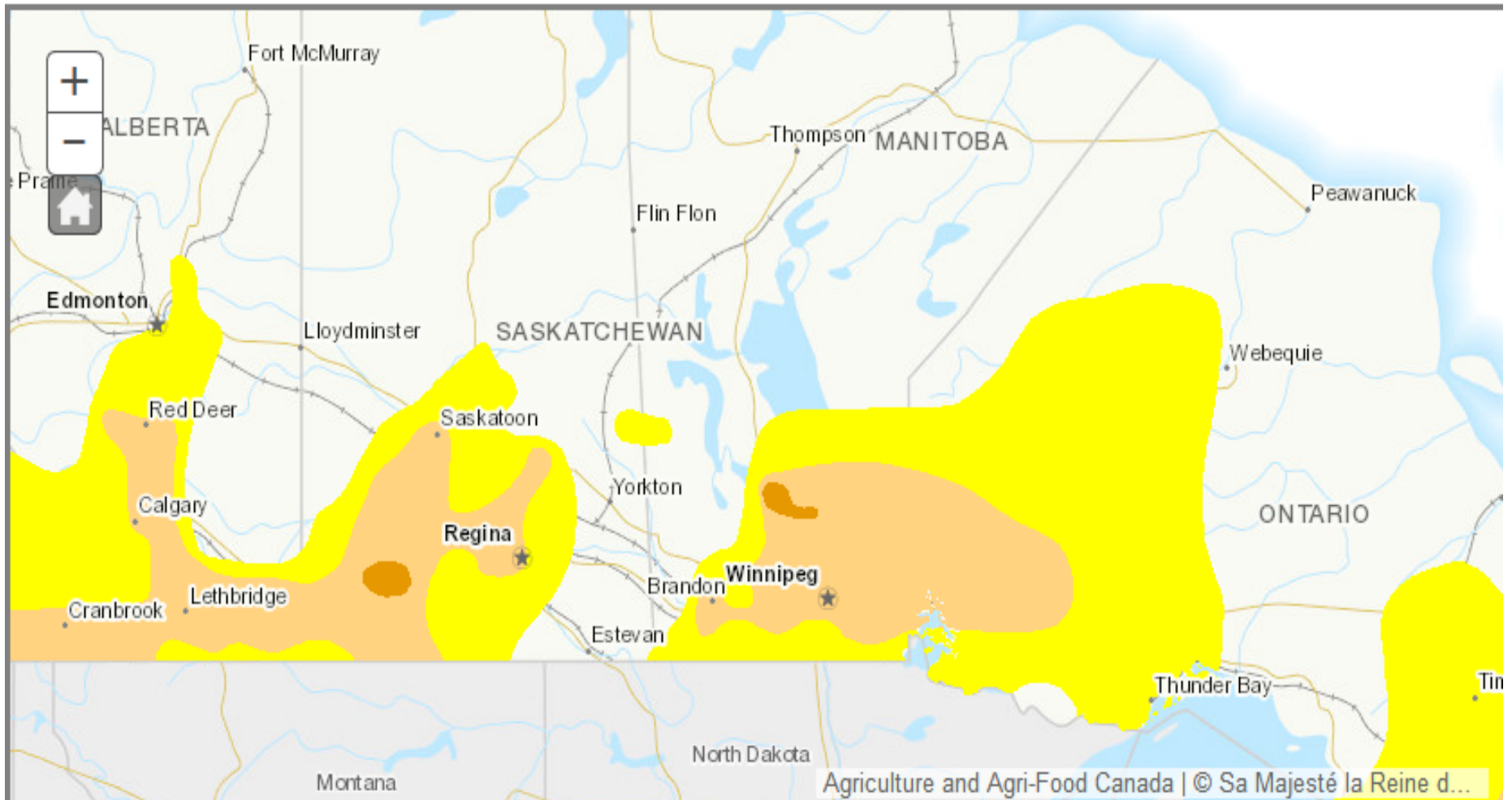


Canadian Canola Supply & Demand Table

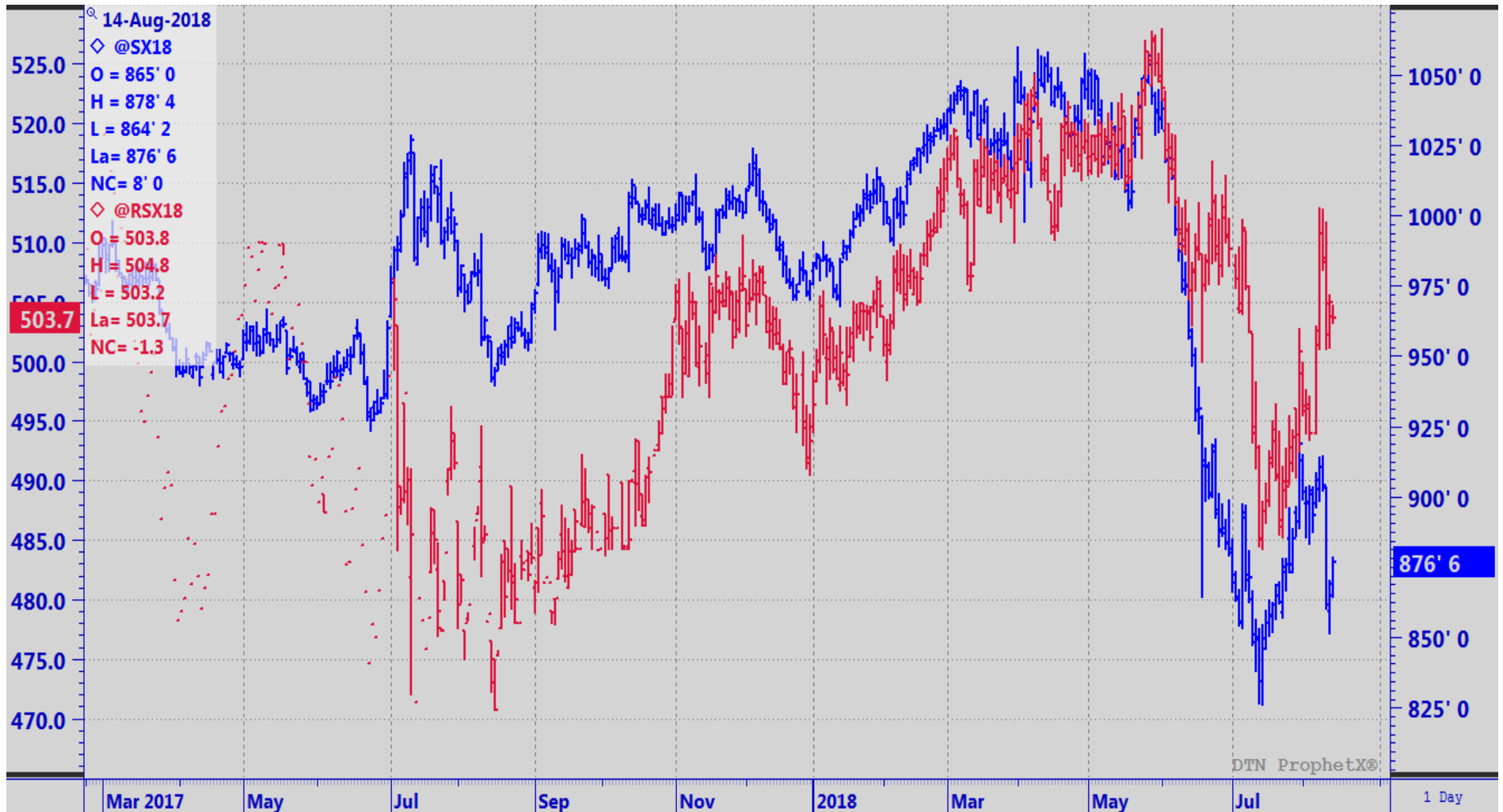
Canadian Canola	2016-2017	2017-2018 (f)	2018-2019 (f)
Planted (1,000)	8,411 Ha.	9,307 Ha.	9,302 Ha.
Harvested (1,000)	8,263 Ha.	9,266 Ha.	9,189 Ha.
Yield/Harvest	2.37 T/Ha.	2.30 T/Ha.	2.21 T/Ha.
Begin Stocks	2,091 mmt.	1,348 mmt.	2,700 mmt.
Production	19,599 mmt.	21,313 mmt.	20,335 mmt.
Imports	95 mmt.	100 mmt.	100 mmt.
Total Supply	21,785 mmt.	22,761 mmt.	23,135 mmt.
Food & Industrial	9,191 mmt.	9,100 mmt.	9,200 mmt.
Exports	11,106 mmt.	10,800 mmt.	11,500 mmt.
Feed, Waste & Dockage	162 mmt.	110 mmt.	134 mmt.
Total Use	20,437 mmt.	20,061 mmt.	20,885 mmt.
Ending Stocks	1,348 mmt.	2,700 mmt.	2,250 mmt.

Canadian Drought Monitor

(July 31, 2018)

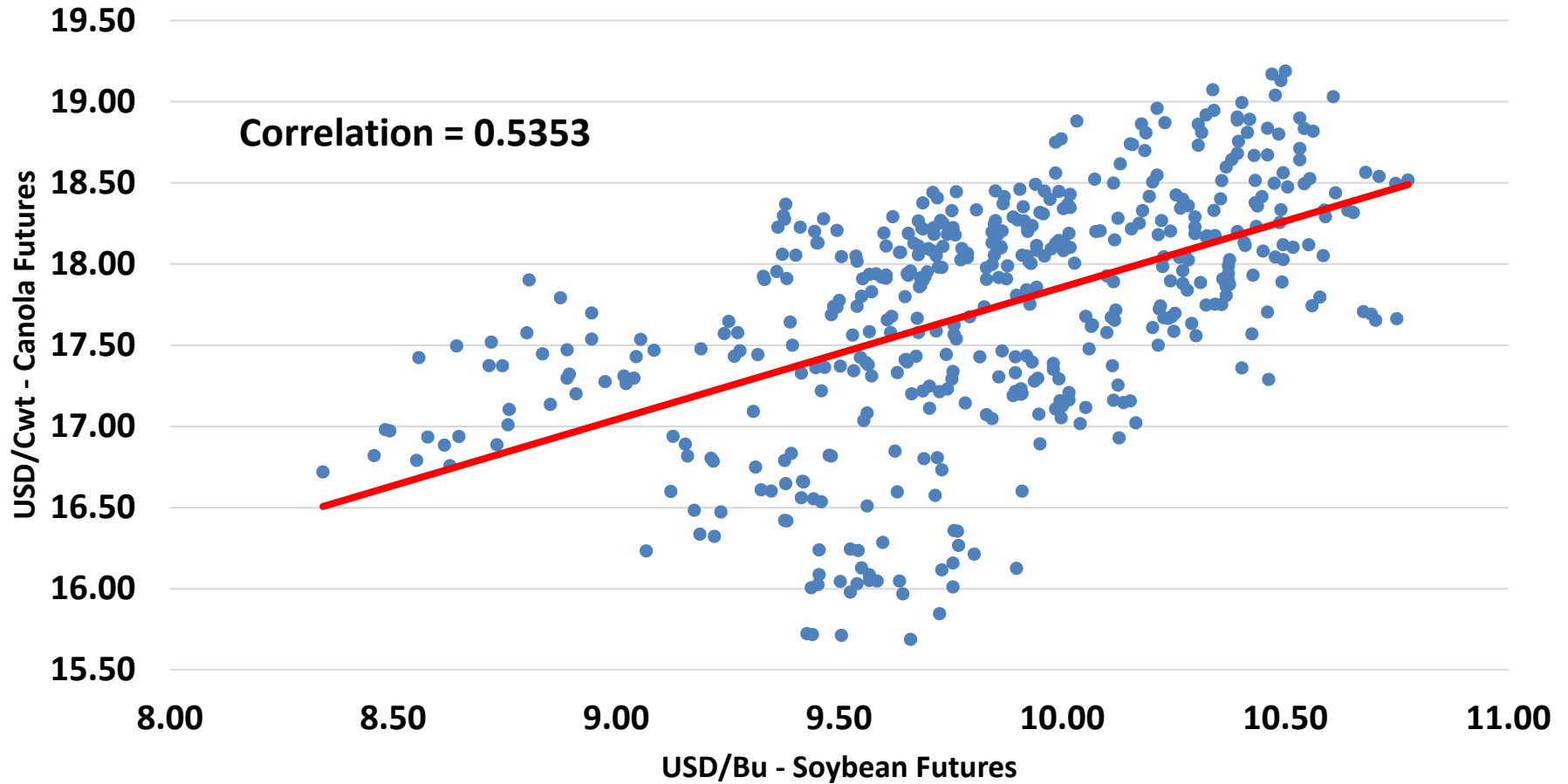


Nov. ICE Canola vs Nov. CBOT Soybean



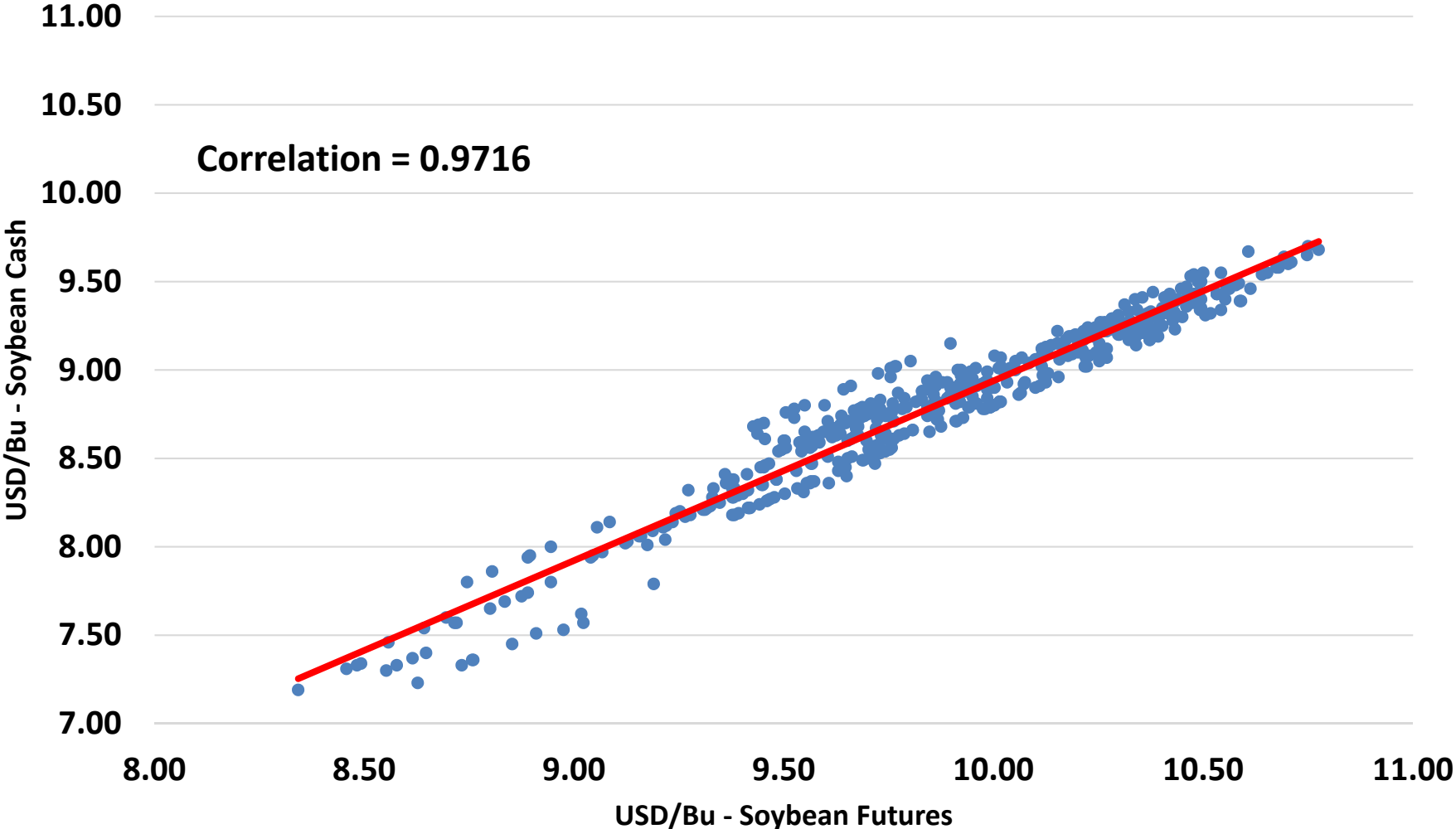
ICE Canola vs CBOT Soybean

(09/01/16 – 08/06-18)



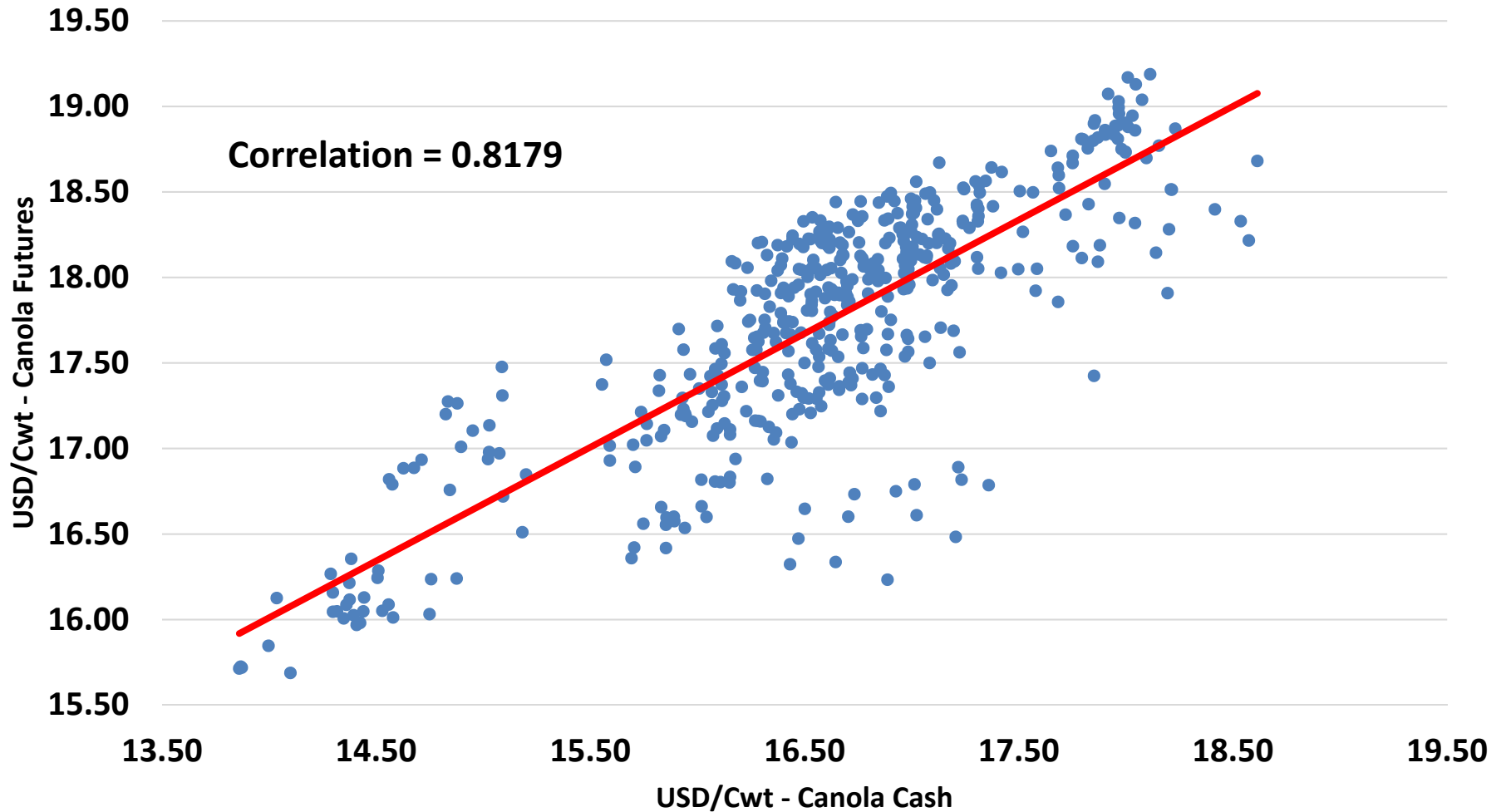
CBOT Soybean vs ND Cash S.B.

(09/01/16 – 08/06-18)



ICE Canola vs ND Cash Canola

(09/01/16 – 08/06-18)



Questions?

