



IGP Export Pace

Wheat, Corn, Grain Sorghum, and Soybean Complex

24th April 2026
Department of Grain & Food Science,
Kansas State University

by Guy H. Allen – Senior Economist, International Grains Program, Kansas State University

For timely market news and quotes see IGP Market Information Website:

<http://www.dtnigp.com/>

Find me on Twitter [igpguy1 @igpguy1](#)

KSU Ag Manager Link: <https://www.agmanager.info/grain-marketing/publications/us-grain-exports-and-trade>

KSU Agriculture Today Podcast Link: <https://agtodayksu.libsyn.com/timeliness-of-corn-and-soybean-plantingworld-grain-supply-and-demand>

IGP Market Information: <http://www.dtnigp.com/index.cfm>

USDA Transportation Report: <https://www.ams.usda.gov/services/transportation-analysis/gtr>

USDA FAS Historical Grain Shipments: <https://apps.fas.usda.gov/export-sales/wkHistData.htm>, <https://apps.fas.usda.gov/export-sales/complete.htm>

Contents

U.S. EXPORT ACTIVITY	1
➤ Export Sales	1
➤ Vessel Loadings	1
➤ Export Inspections	2
CEREAL GRAINS	5
➤ Wheat Export Shipments and Sales	5
➤ Rice Export Shipments and Sales	5
COARSE GRAINS	7
OILSEED COMPLEX	11
➤ Soybean Export Shipments and Sales	11
➤ Soybean Oil Export Shipments and Sales	11

- This summary based on reports for the 24th of April 2026
- Outstanding Export Sales (Unshipped Balances) on the 16th of April 2026
- Export Shipments in Current Marketing Year
- Daily Sales Reported for the 23th of April 2026

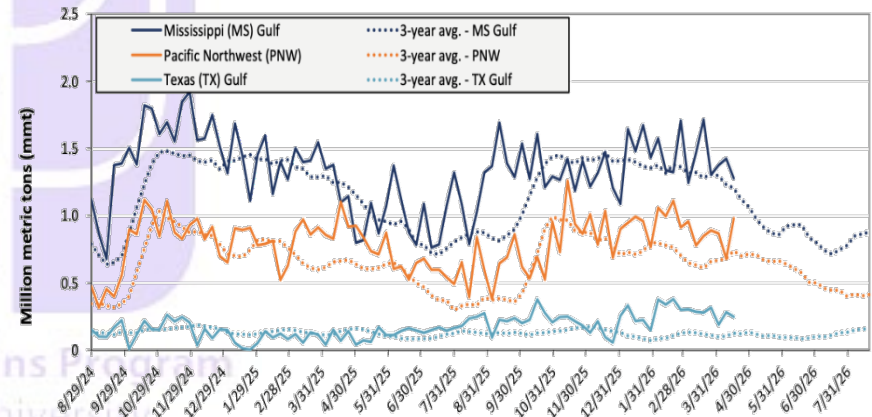
U.S. EXPORT ACTIVITY

➤ Export Sales

- Export Sales data for the week ending April 16, unshipped balances of corn, soybeans, and wheat for marketing year (MY) 2025/26 totaled 31.49 mmmts, down 4% from last week and up 26% from the same time last year.
- Net corn export sales were 1.32 mmmts, down 6% from last week.
- Net soybean export sales were .37 mmmts, up 47% from last week.
- Net wheat export sales were .13 mmmts, up 29% from last week.

➤ Vessel Loadings

Figure 18. U.S. grain inspections for U.S. Gulf and PNW (wheat, corn, and soybeans)



Ocean - For the week ending April 16, 27 oceangoing grain vessels were loaded in the Gulf—21% fewer the same period last year. Within the next 10 days (starting April 17), 40 vessels were expected to be loaded - 21% more than the same period last year. As of April 16, the rate for shipping a metric ton (mt) of grain from the U.S. Gulf to Japan was \$67.25, up 4% from the previous week. The rate from the Pacific Northwest to Japan was \$35.50 per mt, up 2% from the previous week.

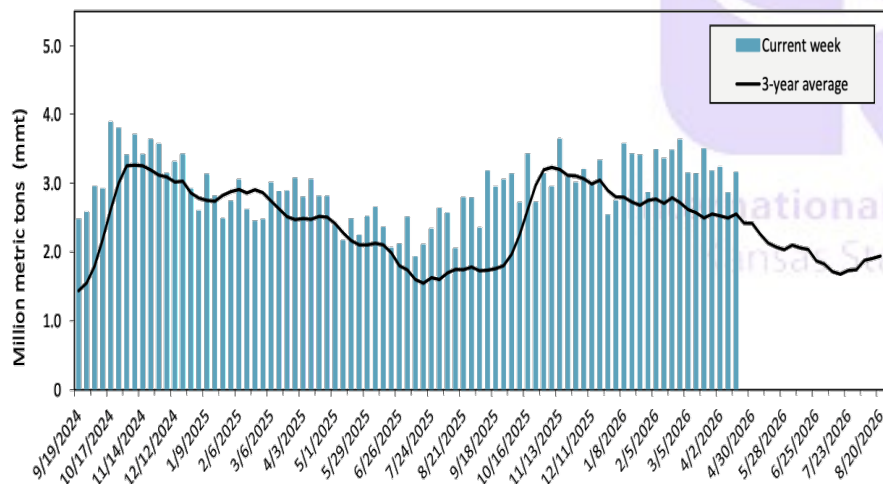
Table 14. U.S. export balances and cumulative exports (1,000 metric tons)

Grain Exports		Wheat						Corn	Soybeans	Total
		Hard red winter (HRW)	Soft red winter (SRW)	Hard red spring (HRS)	Soft white wheat (SWW)	Durum	All wheat			
Current unshipped (outstanding) export sales	For the week ending 4/16/2026	1,083	400	1,053	806	102	3,444	21,631	6,415	31,490
	This week year ago	1,050	352	920	836	46	3,205	17,549	4,294	25,047
	Last 4 wks. as % of same period 2024/25	112	142	126	113	248	122	127	165	133
Current shipped (cumulative) exports sales	2025/26 YTD	7,614	2,909	5,351	4,655	529	21,059	52,473	32,103	105,634
	2024/25YTD	4,348	2,771	5,764	4,875	305	18,063	40,185	42,556	100,804
	YTD 2025/26 as % of 2024/25	175	105	93	95	173	117	131	75	105
	Total 2024/25	5,377	3,106	6,560	5,730	335	21,107	69,081	50,106	140,295
	Total 2023/24	3,535	4,260	6,314	3,906	526	18,540	54,277	44,510	117,328

Note: The marketing year for wheat is June 1 to May 31 and, for corn and soybeans, September 1 to August 31. YTD = year-to-date; wks. = weeks.
Source: USDA, Foreign Agricultural Service.

Export Inspections

Figure 17. U.S. grain inspected for export (wheat, corn, and soybeans)



GRAINS INSPECTED AND/OR WEIGHED FOR EXPORT
REPORTED IN WEEK ENDING APR 16, 2026
-- METRIC TONS --

GRAIN	WEEK ENDING			CURRENT MARKET YEAR TO DATE	PREVIOUS MARKET YEAR TO DATE
	04/16/2026	04/09/2026	04/17/2025		
BARLEY	0	0	0	7,145	10,087
CORN	1,668,885	1,621,949	1,726,344	51,713,522	39,240,852
FLAXSEED	24	24	24	576	408
MIXED	0	0	0	0	122
OATS	0	0	0	5,785	647
RYE	0	0	0	0	0
SORGHUM	202,277	200,856	857	3,328,836	1,639,483
SOYBEANS	748,678	738,786	560,009	32,171,954	42,706,516
SUNFLOWER	0	0	0	40	0
WHEAT	518,141	272,429	510,250	21,490,827	18,851,514
Total	3,138,005	2,834,044	2,797,484	108,718,685	102,449,629

CROP MARKETING YEARS BEGIN JUNE 1 FOR WHEAT, RYE, OATS, BARLEY AND FLAXSEED; SEPTEMBER 1 FOR CORN, SORGHUM, SOYBEANS AND SUNFLOWER SEEDS. INCLUDES WATERWAY SHIPMENTS TO CANADA.

SOYBEANS INSPECTED AND/OR WEIGHED FOR EXPORT
BY PORT AREA AND COUNTRY OF DESTINATION
REPORTED IN WEEK ENDING APR 16, 2026
-- METRIC TONS --

Source: https://www.ams.usda.gov/mnreports/wa_gr101.txt

Table 18. Grain inspections for export by U.S. port region (1,000 metric tons)

Port regions	Commodity	For the week ending 04/16/2026	Previous week*	Current week as % of previous	2026 YTD*	2025 YTD*	2026 YTD as % of 2025 YTD	Last 4-weeks as % of:		2025 total*
								Last year	Prior 3-yr. avg.	
Pacific Northwest	Corn	572	474	121	7,607	7,557	101	87	119	24,214
	Soybeans	133	68	196	3,176	1,791	177	178	304	2,957
	Wheat	265	137	194	2,953	3,136	94	73	76	12,271
	All grain	980	679	144	13,748	12,573	109	91	115	39,721
Mississippi Gulf	Corn	735	824	89	11,528	11,287	102	110	130	37,115
	Soybeans	453	560	81	9,545	8,655	110	90	96	23,350
	Wheat	90	42	215	998	1,088	92	59	63	3,980
	All grain	1,278	1,425	90	22,071	21,030	105	99	112	64,484
Texas Gulf	Corn	0	55	0	431	105	411	n/a	503	590
	Soybeans	0	0	n/a	100	106	94	n/a	n/a	1,431
	Wheat	68	28	241	1,302	955	136	76	107	4,690
	All grain	248	283	88	4,272	1,250	342	259	205	7,774
Interior	Corn	302	236	128	4,703	3,723	126	104	118	15,546
	Soybeans	108	104	104	2,139	2,007	107	99	113	7,712
	Wheat	74	65	113	899	850	106	102	118	3,104
	All grain	507	423	120	7,887	6,704	118	101	117	26,887
Great Lakes	Corn	42	0	n/a	65	0	n/a	n/a	n/a	414
	Soybeans	0	0	n/a	0	0	n/a	n/a	0	63
	Wheat	21	0	n/a	43	53	82	104	110	434
	All grain	63	0	n/a	108	53	204	313	252	911
Atlantic	Corn	19	33	57	517	122	425	425	625	607
	Soybeans	55	8	713	403	425	95	n/a	556	1,085
	Wheat	0	0	n/a	0	0	n/a	n/a	0	81
	All grain	74	41	181	920	546	169	642	559	1,773
All Regions	Corn	1,669	1,622	103	24,851	22,793	109	105	128	78,486
	Soybeans	749	739	101	15,768	13,088	120	109	123	36,851
	Wheat	518	272	190	6,195	6,082	102	74	83	24,560
	All grain	3,148	2,851	110	49,410	42,261	117	105	121	141,803

*Note: Data include revisions from prior weeks; "All grain" includes corn, soybeans, wheat, sorghum, oats, barley, rye, sunflower, flaxseed, and mixed grains; "All regions" includes listed regions and other minor regions not listed; YTD = year-to-date; n/a = not available or no change. A "-" in the table indicates a percentage change with a near-zero denominator for the period.
Source: USDA, Federal Grain Inspection Service.

➤ **BARGE MOVEMENTS**

Figure 12. Barge movements on the Mississippi River (Locks 27-Granite City, IL)

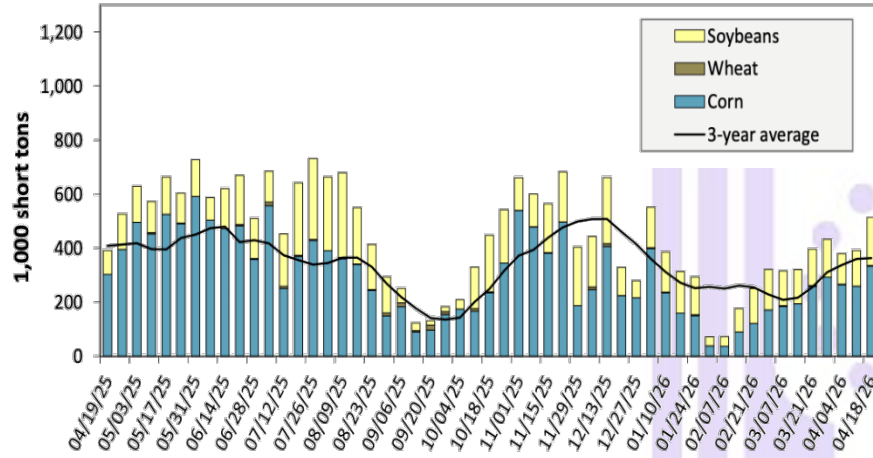
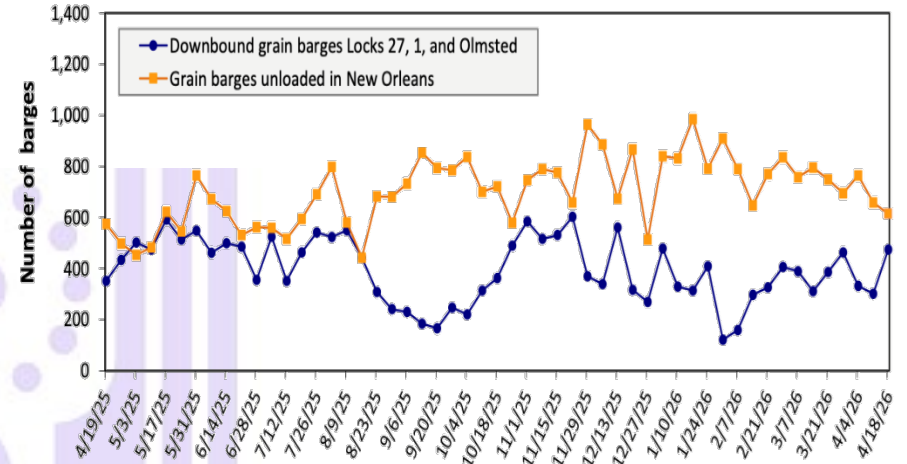


Figure 14. Grain barges for export in New Orleans region



Barge – For the week ending April 18th, barged grain movements totaled 719,627 tons. This was 43% more than the previous week and 53% more than the same week last year. For the week ending April 18, 475 barges moved down river, 173 more than the previous week. There were 614 grain barges unloaded in the New Orleans Region, 7% less than the previous week.

Table 10. Barged grain movements (1,000 tons)

For the week ending 04/18/2026	Corn	Wheat	Soybeans	Other	Total
Mississippi River (Rock Island, IL (L15))	88	0	61	0	149
Mississippi River (Winfield, MO (L25))	149	0	121	0	271
Mississippi River (Alton, IL (L26))	318	2	170	0	490
Mississippi River (Granite City, IL (L27))	333	2	178	0	513
Illinois River (La Grange)	178	2	39	0	219
Ohio River (Olmsted)	83	2	85	0	169
Arkansas River (L1)	0	20	17	0	37
Weekly total - 2026	416	24	280	0	720
Weekly total - 2025	313	34	123	0	469
2026 YTD	4,260	266	3,158	28	7,712
2025 YTD	4,978	299	3,503	75	8,855
2026 as % of 2025 YTD	86	89	90	37	87
Last 4 weeks as % of 2025	117	119	120	0	118
Total 2025	20,015	1,259	11,322	166	32,761

Note: "Other" refers to oats, barley, sorghum, and rye. Total may not add up due to rounding. YTD = year to date. Weekly total, YTD, and calendar year total include Mississippi River lock 27, Ohio River Olmsted lock, and Arkansas Lock 1. "L" (as in "L15") refers to a lock, locks, or lock and dam facility.
Source: U.S. Army Corps of Engineers.

CEREAL GRAINS

➤ Wheat Export Shipments and Sales

Wheat: Net sales of 129,000 metric tons (mts) for 2025/2026 were up 29% from the previous week, but down 25% from the prior 4-week average. Increases primarily for Japan (59,400 mts), Nigeria (47,400 mts, including 46,500 mts switched from unknown destinations), Mexico (41,000 mts, including decreases of 2,700 mts), Algeria (21,000 mts, including 20,000 mts switched from unknown destinations), and Guyana (8,400 mts, including 8,100 mts switched from unknown destinations), were offset by reductions for unknown destinations (83,500 mts). Net sales of 8,000 mts for 2026/2027 were reported for South Korea (6,000 mts) and Honduras (2,000 mts).

Exports of 524,100 mts were up 68% from the previous week and 49% from the prior 4-week average. The destinations were primarily to the Philippines (96,000 mts), Mexico (90,700 mts), Thailand (65,400 mts), Indonesia (57,800 mts), and Nigeria (51,100 mts). Source: USDA FAS - <https://apps.fas.usda.gov/esrqs/#/reports/weeklyexportsalesreportdetail>

➤ Rice Export Shipments and Sales

Rice: Net sales of 22,500 mts for 2025/2026 were down 78% from the previous week and 57% from the prior 4-week average. Increases primarily for Japan (18,200 mts), Mexico (12,100 mts), Saudi Arabia (1,400 mts), Canada (700 mts, including decreases of 200 mts), and the Turks and Caicos Islands (400 mts), were offset by reductions for Haiti (7,500 mts) and Taiwan (3,400 mts).

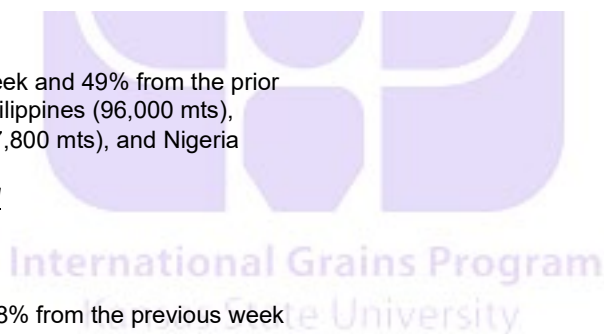
Exports of 49,900 mts were down 60% from the previous week and 9% from the prior 4-week average. The destinations were primarily to Senegal (35,100 mts), Mexico (5,900 mts), Canada (2,800 mts), Taiwan (2,000 mts), and South Korea (1,700 mts).

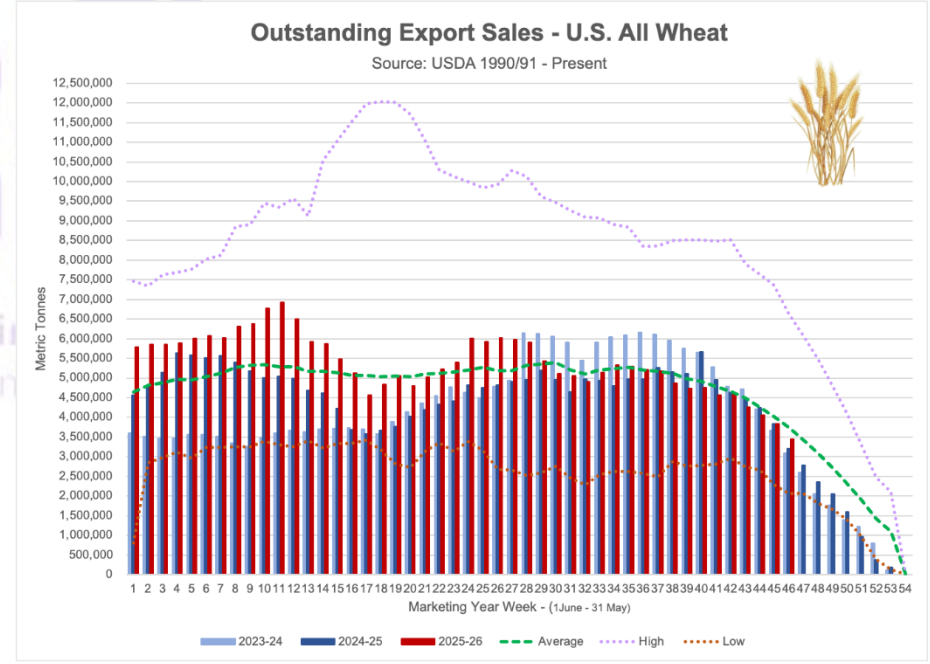
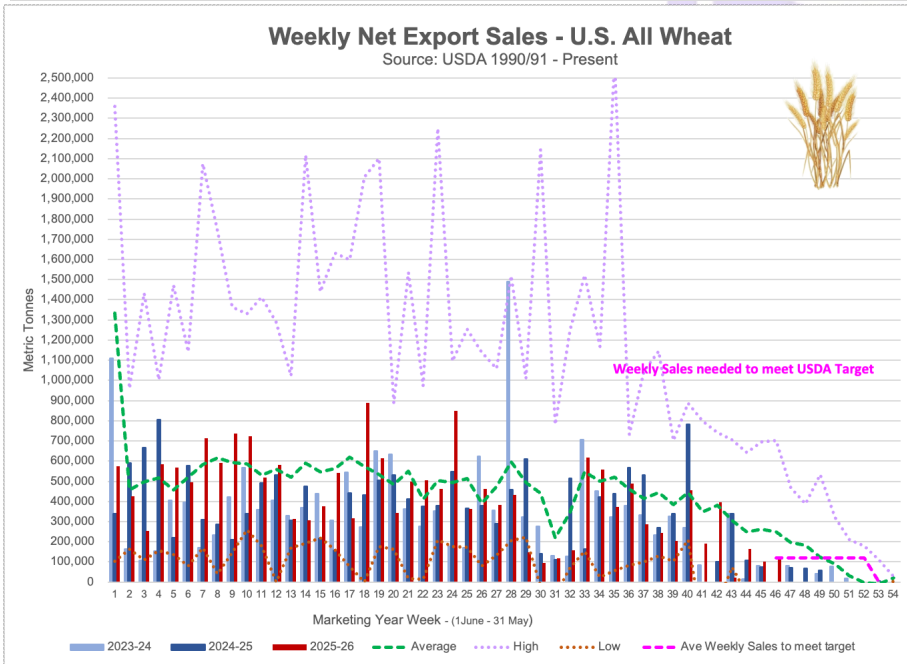
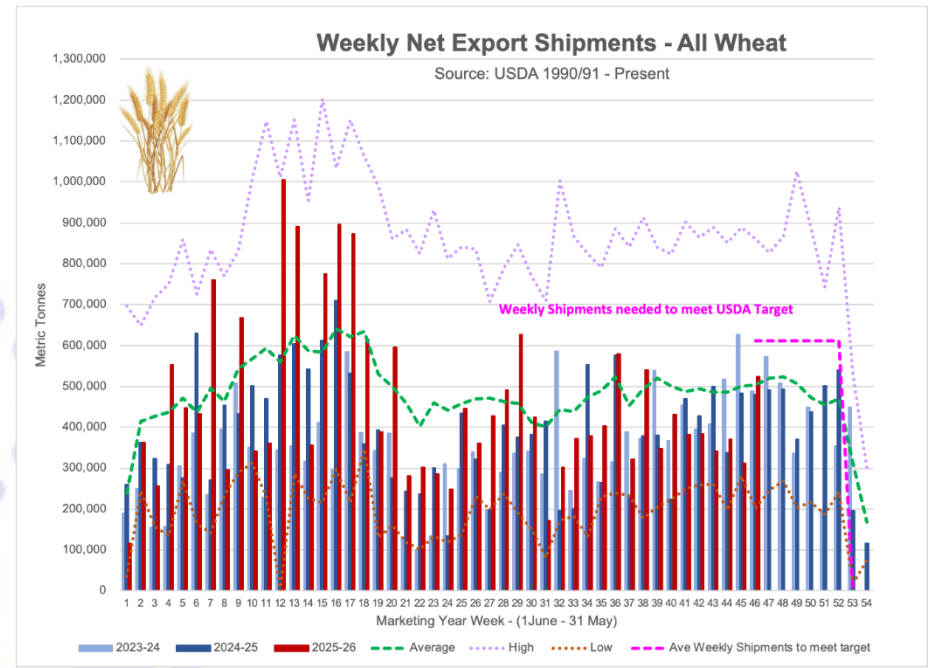
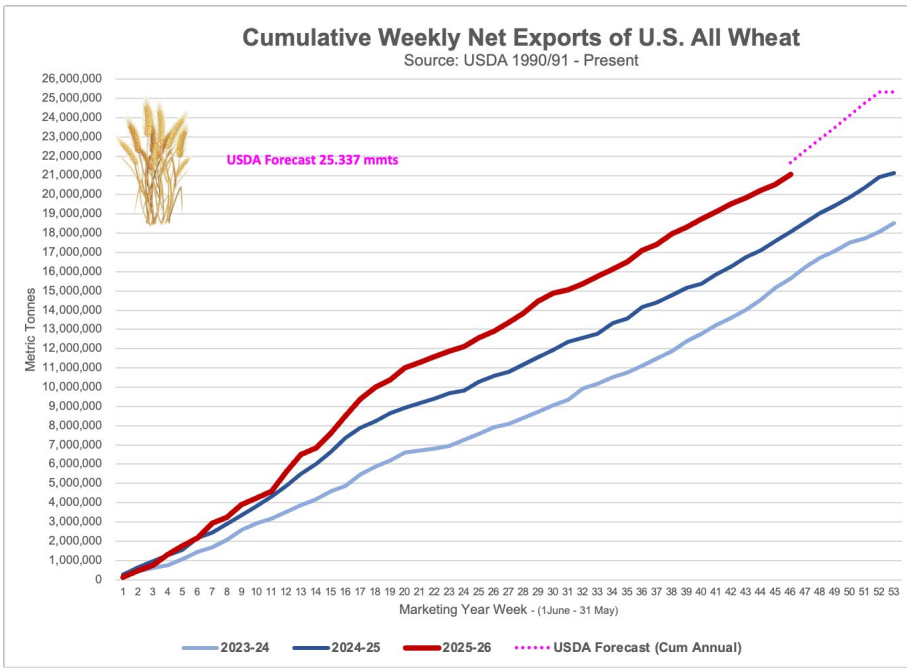
Source: USDA FAS - <https://apps.fas.usda.gov/esrqs/#/reports/weeklyexportsalesreportdetail>

Table 17. Top 10 importers of all U.S. wheat

For the week ending 4/16/2026	Total commitments (1,000 mt)		% change current MY from last MY	Exports 3-year average 2022-24 (1,000 mt)
	YTD MY 2025/26	YTD MY 2024/25		
Mexico	4,522	3,908	16	3,358
Philippines	2,894	2,602	11	2,473
Japan	2,242	2,109	6	2,045
China	336	139	142	1,137
Korea	1,878	2,395	-22	1,674
Taiwan	976	1,013	-4	935
Thailand	661	892	-26	667
Nigeria	1,559	719	117	629
Indonesia	1,091	754	45	518
Colombia	723	474	53	489
Top 10 importers	16,882	15,006	13	13,926
Total U.S. wheat export sales	24,503	21,268	15	19,135
% of YTD current month's export projection	100%	95%	-	-
Change from prior week	129	-14	-	-
Top 10 importers' share of U.S. wheat export sales	69%	71%	-	73%
USDA forecast, April 2026	24,494	22,480	9	-

Note: The top 10 importers are based on USDA, Foreign Agricultural Service (FAS) marketing year ranking reports for marketing year (MY) 2024/25 (June 1 – May 31). "Total commitments" = cumulative exports (shipped) + outstanding sales (unshipped), from FAS weekly export sales report, or export sales query. Total commitments' change (net sales) from prior week could include revisions from previous week's outstanding sales or accumulated sales. In rightmost column, "Exports" = accumulated exports (as defined in FAS marketing year ranking reports). mt = metric ton; yr. = year; avg. = average; YTD = year to date; "-" = not applicable. Source: USDA, Foreign Agricultural Service.





COARSE GRAINS

Corn: Net sales of 1,316,700 mts for 2025/2026 were down 6% from the previous week, but up 3% from the prior 4-week average. Increases primarily for South Korea (345,700 mts, including 195,000 mts switched from unknown destinations, 67,000 mts switched from Taiwan, and decreases of 2,400 mts), Japan (324,200 mts, including 119,500 mts switched from unknown destinations and decreases of 22,900 mts), unknown destinations (233,600 mts), Spain (70,600 mts, including 68,000 mts switched from unknown destinations), and the Dominican Republic (61,900 mts, including 32,100 mts switched from unknown destinations and decreases of 900 mts), were offset by reductions for Taiwan (63,500 mts) and El Salvador (900 mts). Total net sales of 440,100 mts for 2026/2027 were for Mexico.

Exports of 1,952,500 mts were up 25% from the previous week and 11% from the prior 4-week average. The destinations were primarily to Mexico (595,500 mts), Japan (424,800 mts), South Korea (409,700 mts), Taiwan (86,900 mts), and Colombia (77,000 mts).

Barley: No net sales for 2025/2026 were reported for the week. Net sales of 1,400 mts for 2026/2027 were reported for Canada (900 mts) and Japan (500 mts). Exports of 1,300 mts were to Canada.

Sorghum: Net sales of 192,600 mts for 2025/2026 were up noticeably from the previous week and from the prior 4-week average. Increases reported for China (192,800 mts, including 63,000 mts switched from unknown destinations and decreases of 800 mts), Mexico (2,000 mts, including decreases of 900 mts), and Japan (800 mts), were offset by reductions for unknown destinations (3,000 mts).

Table 15. Top 5 importers of U.S. corn

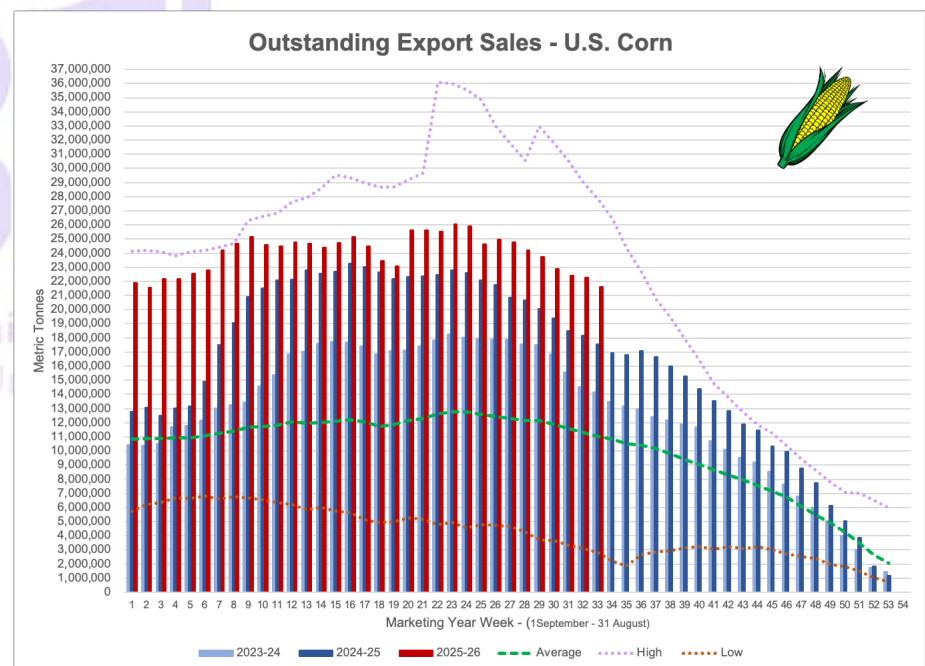
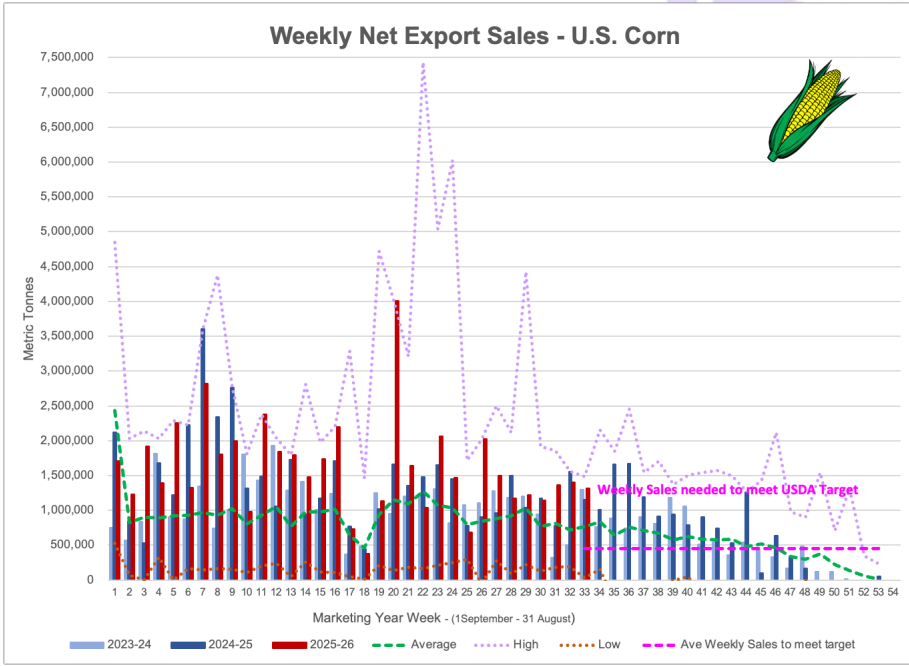
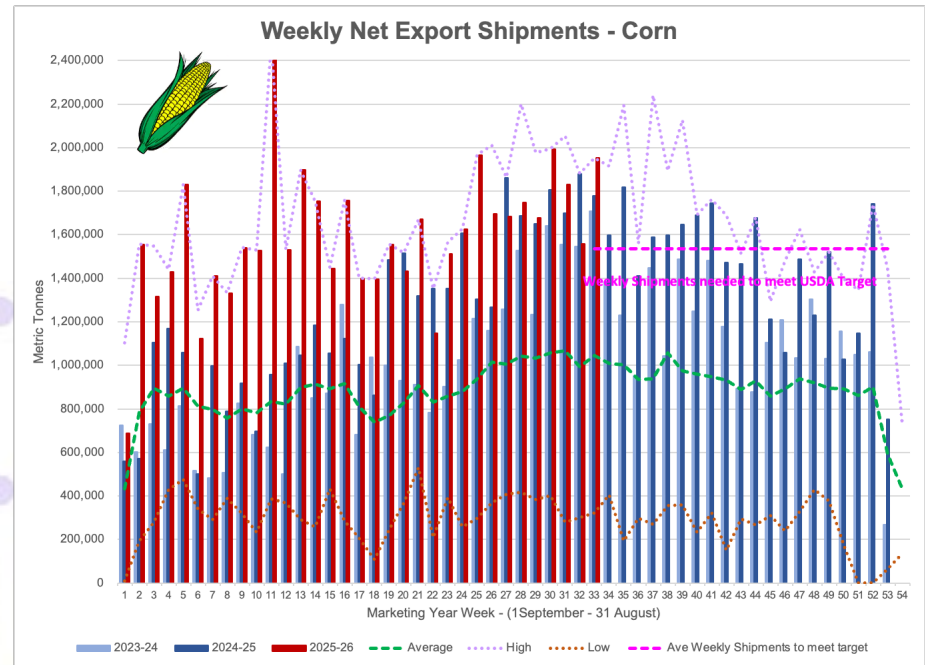
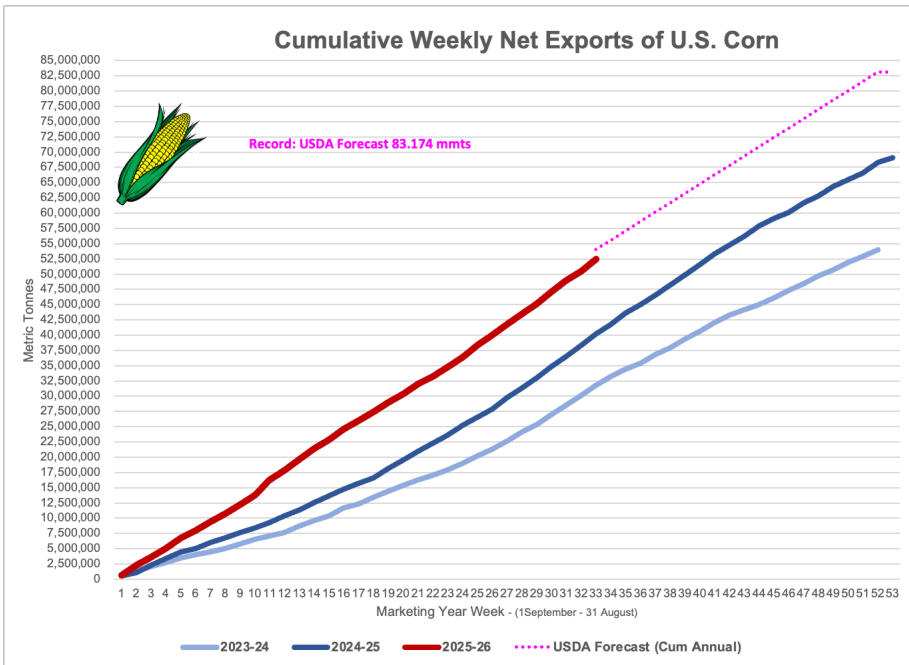
For the week ending 4/16/2026	Total commitments (1,000 mt)		% change current MY from last MY	Exports 3-year average 2022-24 (1,000 mt)
	YTD MY 2025/26	YTD MY 2024/25		
Mexico	21,419	19,820	8	19,839
Japan	12,831	10,092	27	10,478
Colombia	6,041	5,891	3	5,493
China	0	33	-100	3,461
Korea	7,551	4,310	75	3,127
Top 5 importers	40,292	35,835	12	39,272
Total U.S. corn export sales	74,103	57,734	28	54,276
% of YTD current month's export projection	88%	80%	-	-
Change from prior week	1,317	1,512	-	-
Top 5 importers' share of U.S. corn export sales	54%	62%	-	72%
USDA forecast April 2026	83,824	72,597	15	-
Corn use for ethanol USDA forecast, April 2026	142,240	138,075	3	-

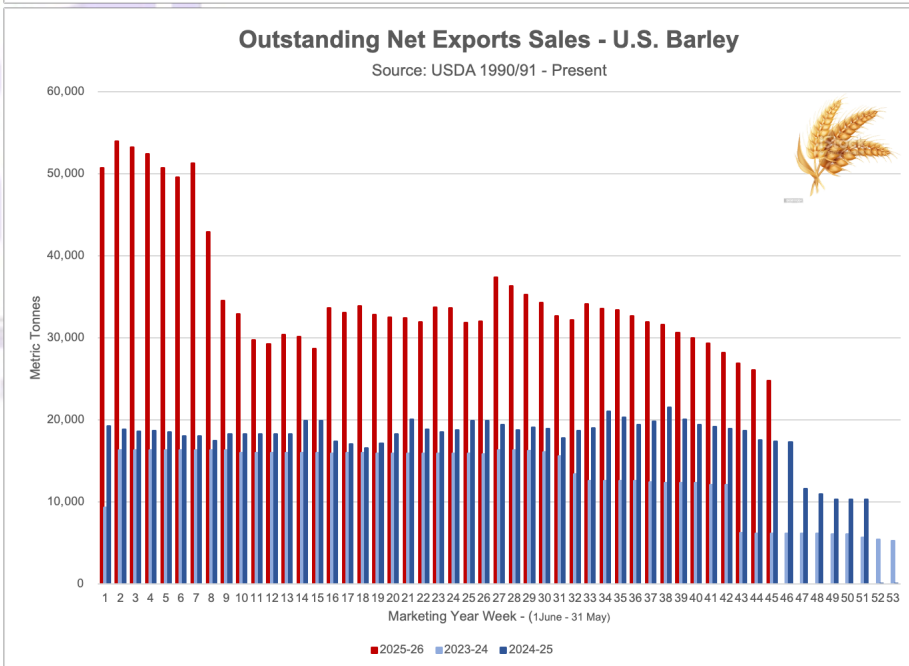
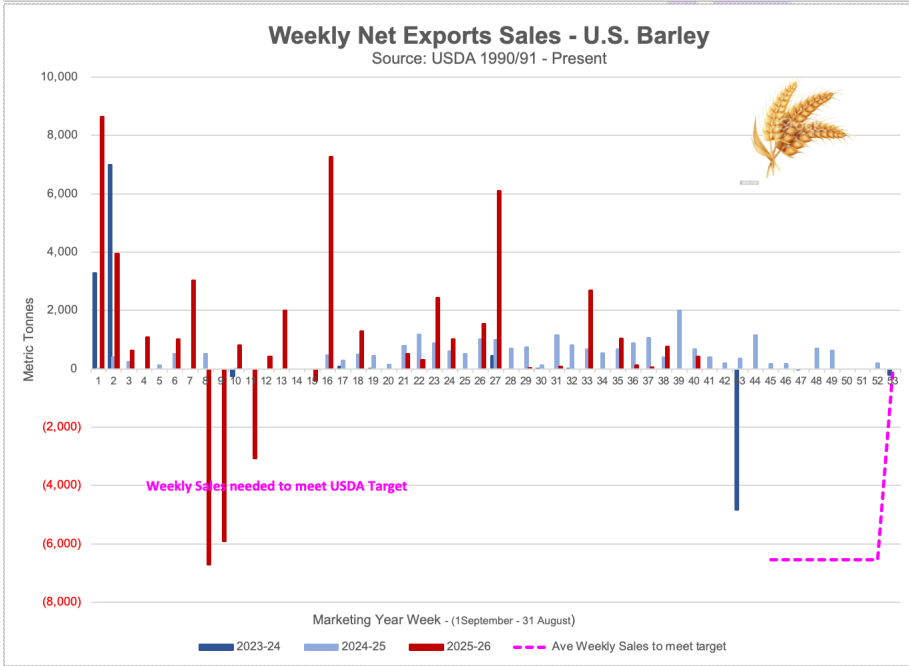
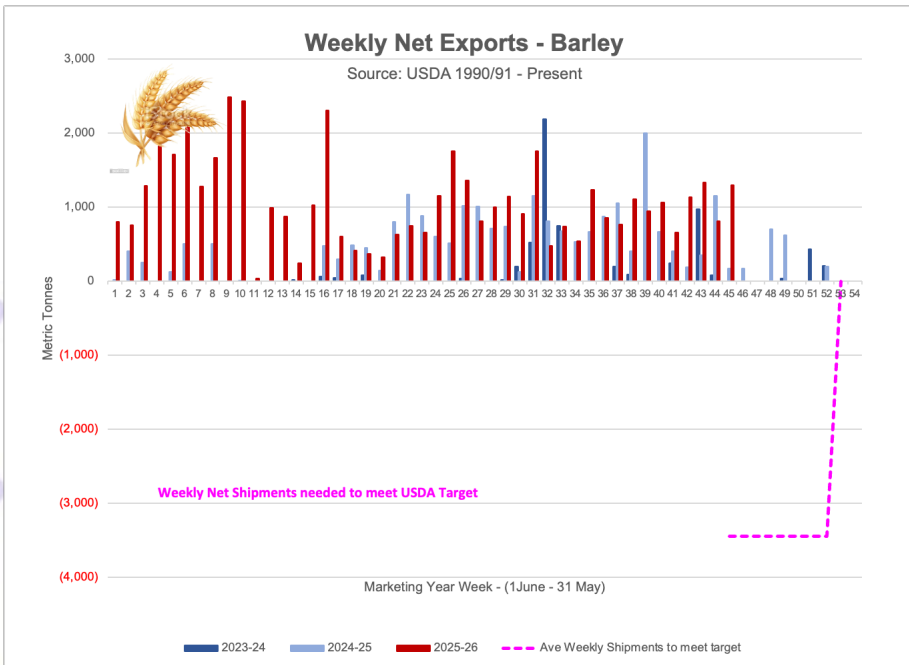
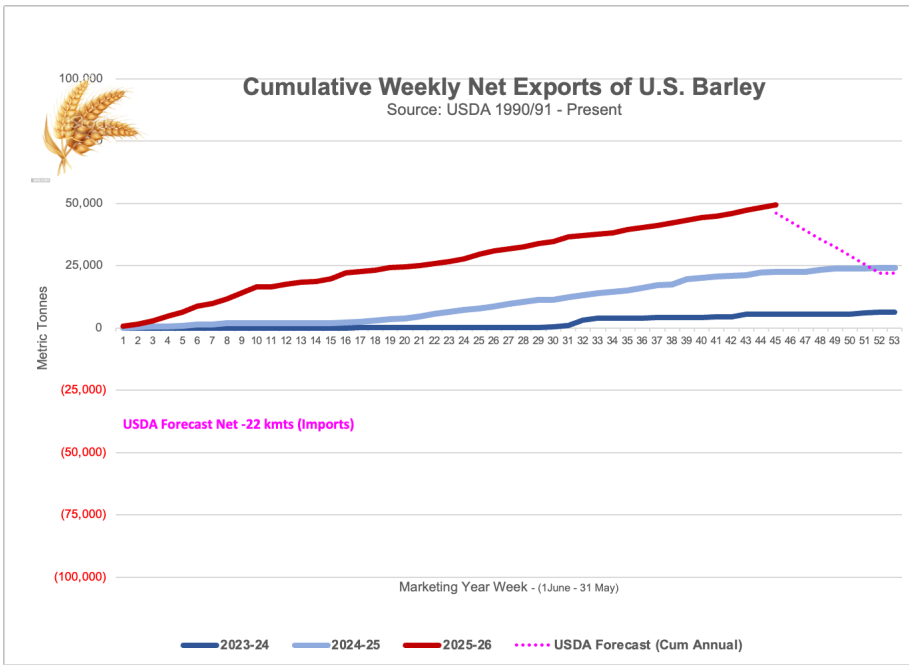
Note: The top 5 importers are based on USDA, Foreign Agricultural Service (FAS) marketing year ranking reports for marketing year (MY) 2024/25 (September 1 – August 31). "Total commitments" = cumulative exports (shipped) + outstanding sales (unshipped), from FAS weekly export sales report, or export sales query. Total commitments' change (net sales) from prior week could include revisions from previous week's outstanding sales or accumulated sales. In rightmost column, "Exports" = accumulated exports (as defined in FAS marketing year ranking reports). mt = metric ton; yr. = year; avg. = average; YTD = year to date; "-" = not applicable.

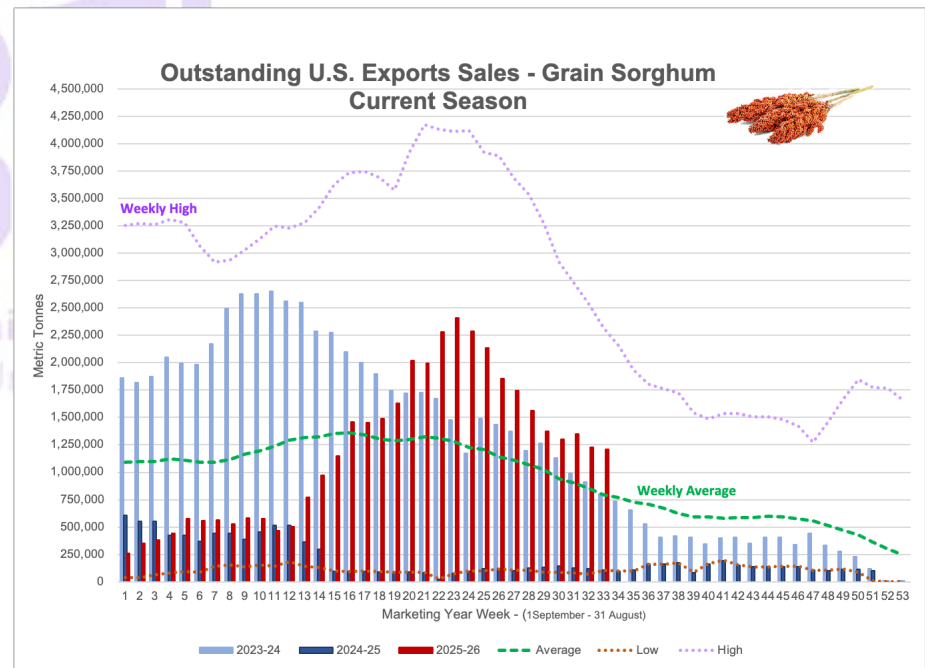
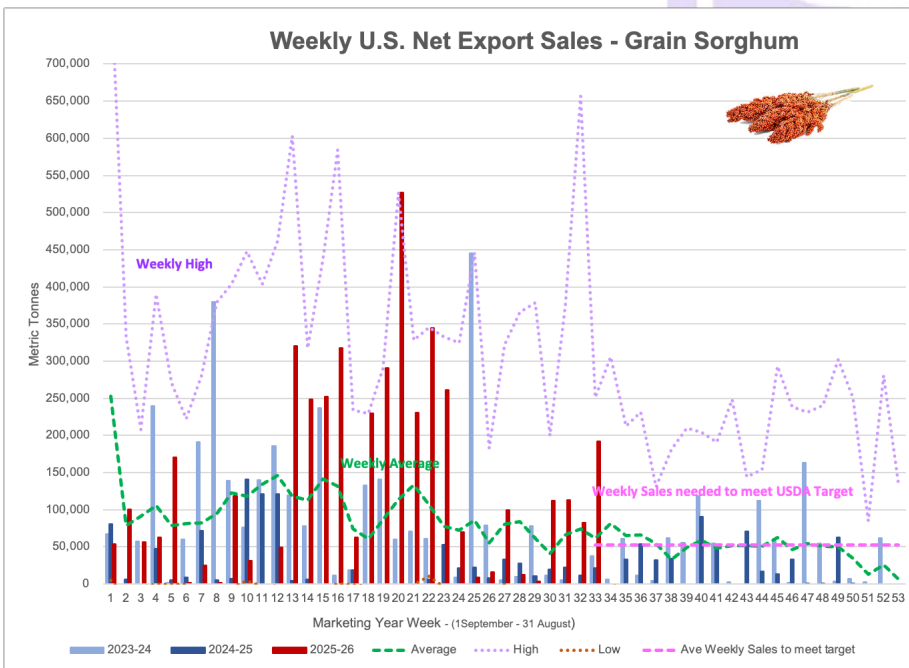
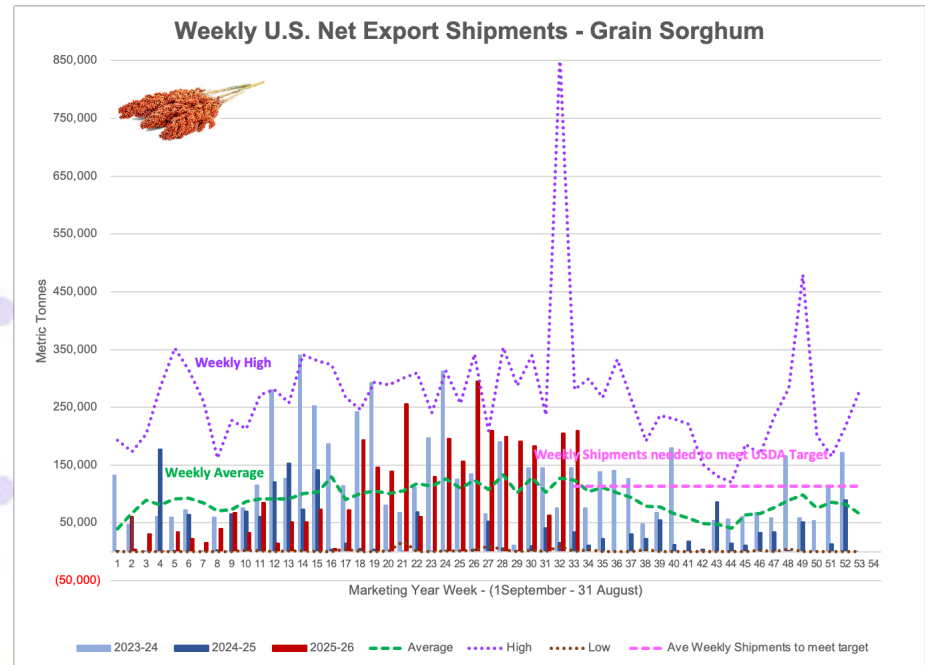
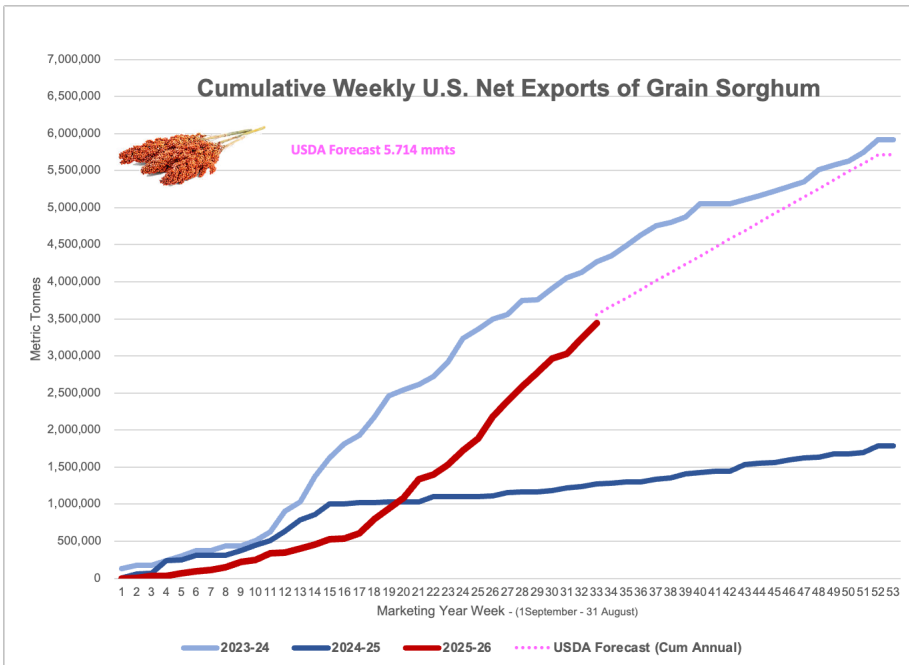
Source: USDA, Foreign Agricultural Service.

Exports of 210,400 mts were up 3% from the previous week and 31% from the prior 4-week average. The destinations were to China (186,500 mts), Mexico (13,200 mts), and Japan (10,800 mts).

Source: USDA FAS - <https://apps.fas.usda.gov/esrqs/#/reports/weeklyexportsalesreportdetail>







OILSEED COMPLEX

➤ Soybean Export Shipments and Sales

Soybeans: Net sales of 364,600 mts for 2025/2026 were up 47% from the previous week, but down 7% from the prior 4-week average. Increases were primarily for Egypt (93,600 mts), Japan (78,700 mts, including 51,000 mts switched from unknown destinations and decreases of 2,900 mts), unknown destinations (48,600 mts), Algeria (44,000 mts), and Indonesia (21,000 mts, including decreases of 200 mts). Total net sales of 5,000 mts for 2026/2027 were for Malaysia.

Exports of 768,100 mts were down 6% from the previous week and 12% from the prior 4-week average. The destinations were primarily to China (446,200 mts), Egypt (117,600 mts), Japan (76,900 mts), Indonesia (47,800 mts), and Mexico (41,800 mts).

Soybean Meal Export Shipments and Sales

Soybean Cake and Meal: Net sales of 162,300 mts for 2025/2026 were down 36% from the previous week and 57% from the prior 4-week average. Increases primarily for Vietnam (52,000 mts, including 48,000 mts switched from unknown destinations and decreases of 200 mts), Mexico (38,800 mts), Australia (30,000 mts switched from unknown destinations), New Zealand (30,000 mts switched from unknown destinations), and the United Kingdom (24,000 mts), were offset by reductions primarily for unknown destinations (113,400 mts), Canada (6,600 mts), El Salvador (1,800 mts), Japan (700 mts), and Nepal (500 mts). Total net sales reductions of 1,500 mts for 2026/2027 were for Canada.

Exports of 312,400 mts were down 10% from the previous week and 21% from the prior 4-week average. The destinations were primarily to Ecuador (65,200 mts), Vietnam (61,900 mts), Mexico (47,600 mts), Colombia (42,900 mts), and Morocco (27,100 mts).

Table 16. Top 5 importers of U.S. soybeans

For the week ending 4/16/2026	Total commitments (1,000 mt)		% change current MY from last MY	Exports 3-year average 2022-24 (1,000 mt)
	YTD MY 2025/26	YTD MY 2024/25		
China	11,535	22,338	-48	26,078
Mexico	4,627	4,459	4	4,762
Japan	1,905	1,697	12	2,107
Egypt	4,424	2,766	60	2,098
Indonesia	1,883	1,497	26	1,997
Top 5 importers	24,375	32,756	-26	37,042
Total U.S. soybean export sales	38,518	46,850	-18	48,941
% of YTD current month's export projection	92%	91%	-	-
Change from prior week	365	578	-	-
Top 5 importers' share of U.S. soybean export sales	63%	70%	-	76%
USDA forecast, April 2026	41,912	51,220	-18	-

Note: The top 5 importers are based on USDA, Foreign Agricultural Service (FAS) marketing year ranking reports for marketing year (MY) 2024/25 (September 1 - August 31). "Total commitments" = cumulative exports (shipped) + outstanding sales (unshipped), from FAS weekly export sales report, or export sales query. Total commitments' change (net sales) from prior week could include revisions from previous week's outstanding sales or accumulated sales. In rightmost column, "Exports" = accumulated exports (as defined in FAS marketing year ranking reports). mt = metric ton; yr. = year; avg. = average; YTD = year to date; "-" = not applicable. Source: USDA, Foreign Agricultural Service.

➤ Soybean Oil Export Shipments and Sales

Soybean Oil: Net sales of 1,500 mts for 2025/2026 were up 34% from the previous week and up noticeably from the prior 4-week average. Increases were reported for Mexico (800 mts) and Canada (700 mts, including decreases of 100 mts).

Exports of 9,200 mts were up noticeably from the previous week but unchanged from the prior 4-week average. The destinations were to Venezuela (5,000 mts), Colombia (2,600 mts), Mexico (1,100 mts), and Canada (400 mts).

Source: USDA FAS - <https://apps.fas.usda.gov/esrqs/#/reports/weeklyexportsalesreportdetail>

