



IGP Export Pace

Wheat, Corn, Grain Sorghum, and Soybean Complex

3rd July 2026
Department of Grain & Food Science,
Kansas State University

by Guy H. Allen – Senior Economist, International Grains Program, Kansas State University

For timely market news and quotes see IGP Market Information Website:

<https://ksu.agricharts.com/> Find me on Twitter [igpguy1 @igpguy1](#)

KSU Ag Manager Link: <https://www.agmanager.info/grain-marketing/publications/us-grain-exports-and-trade>

KSU Agriculture Today Podcast Link: <https://agtodayksu.libsyn.com/timeliness-of-corn-and-soybean-plantingworld-grain-supply-and-demand>

IGP Market Information: <http://www.dtnigp.com/index.cfm>

USDA Transportation Report: <https://www.ams.usda.gov/services/transportation-analysis/gtr>

USDA FAS Historical Grain Shipments: <https://apps.fas.usda.gov/export-sales/wkHistData.htm>, <https://apps.fas.usda.gov/export-sales/complete.htm>

Contents

U.S. EXPORT ACTIVITY	1
➤ Export Sales	1
➤ Vessel Loadings	1
➤ Export Inspections	2
CEREAL GRAINS	5
➤ Wheat Export Shipments and Sales	5
➤ Rice Export Shipments and Sales	5
COARSE GRAINS	7
➤ Corn Export Shipments and Sales	7
➤ Grain Sorghum Export Shipments and Sales	7
➤ Barley Export Shipments and Sales	7
OILSEED COMPLEX	11
➤ Soybean Export Shipments and Sales	11
➤ Soybean Meal Export Shipments and Sales	11
➤ Soybean Oil Export Shipments and Sales	11

- This summary based on reports for the 3rd of July 2026
- Outstanding Export Sales (Unshipped Balances) on the 25th of June 2026
- Export Shipments in Current Marketing Year
- Daily Sales Reported for the 2nd of July 2026

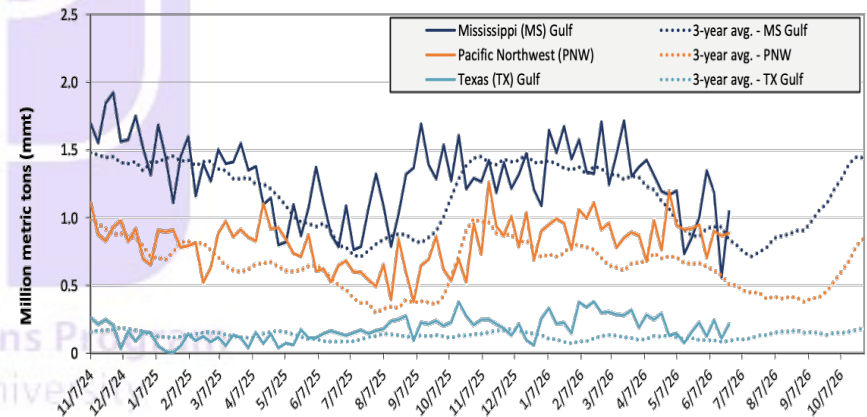
U.S. EXPORT ACTIVITY

➤ Export Sales

- Export Sales data for the week ending June 25, unshipped balances of corn, soybeans, and wheat for marketing year (MY) 2025/26 totaled 19.70 mmmts, down 7% from last week and up 23% from the same time last year.
- Net corn export sales were .73 mmmts, down 2% from last week.
- Net soybean export sales were .042 mmmts, up 91% from last week.
- Net wheat export sales were .30 mmmts, down 41% from last week.

➤ Vessel Loadings

Figure 18. U.S. grain inspections for U.S. Gulf and PNW (wheat, corn, and soybeans)



Ocean - For the week ending June 25, 27 oceangoing grain vessels were loaded in the Gulf—17% more than the same period last year. Within the next 10 days (starting June 26), 40 vessels were expected to be loaded – 9% fewer than the same period last year. As of June 25, the rate for shipping a metric ton (mt) of grain from the U.S. Gulf to Japan was \$69.50, down 3% from the previous week. The rate from the Pacific Northwest to Japan was \$36.00 per mt, down 2% from the previous week.

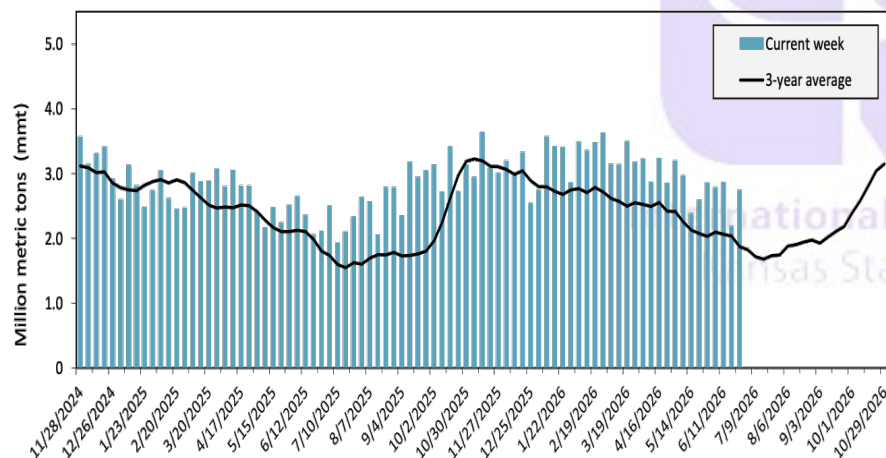
Table 14. U.S. export balances and cumulative exports (1,000 metric tons)

Grain Exports		Wheat					Corn	Soybeans	Total	
		Hard red winter (HRW)	Soft red winter (SRW)	Hard red spring (HRS)	Soft white wheat (SWW)	Durum				All wheat
Current unshipped (outstanding) export sales	For the week ending 06/25/2026	952	732	1,243	1,281	163	4,371	15,769	3,928	24,067
	This week year ago	2,134	1,124	1,673	865	92	5,889	11,883	4,075	21,847
	Last 4 wks. as % of same period in prior marketing year	45	67	77	146	141	74	144	101	117
Current shipped (cumulative) exports sales	Current MYTD	470	153	417	360	27	1,427	69,631	37,153	108,211
	Prior MYTD	582	115	409	179	4	1,289	56,224	45,798	103,311
	Current MYTD as % of prior MYTD	81	133	102	201	762	111	124	81	105
	Total 2025/26	8,243	3,191	6,078	5,207	622	23,408	-	-	23,408
	Total 2024/25	5,377	3,095	6,560	5,730	335	21,097	69,081	50,106	140,284
Total 2023/24	3,535	4,260	6,314	3,906	526	18,540	54,277	44,510	117,328	

Note: The marketing year for wheat is June 1 to May 31 and, for corn and soybeans, September 1 to August 31. YTD = year-to-date. wks. = weeks. MYTD = marketing year to date. Source: USDA, Foreign Agricultural Service.

➤ **Export Inspections**

Figure 17. U.S. grain inspected for export (wheat, corn, and soybeans)



GRAINS INSPECTED AND/OR WEIGHED FOR EXPORT REPORTED IN WEEK ENDING JUN 25, 2026 -- METRIC TONS --

GRAIN	WEEK ENDING			CURRENT MARKET YEAR TO DATE	PREVIOUS MARKET YEAR TO DATE
	06/25/2026	06/18/2026	06/26/2025		
BARLEY	0	0	0	122	122
CORN	1,786,167	1,467,624	1,380,943	68,881,976	54,955,195
FLAXSEED	0	24	0	48	24
MIXED	0	0	0	0	122
OATS	0	0	0	0	1,297
RYE	0	0	0	0	0
SORGHUM	169,743	39,072	11,000	4,592,271	1,945,201
SOYBEANS	419,124	272,141	237,179	37,298,689	45,892,170
SUNFLOWER	0	0	0	40	0
WHEAT	358,253	396,114	476,581	1,332,932	1,321,549
Total	2,733,287	2,174,975	2,105,703	112,106,078	104,115,680

CROP MARKETING YEARS BEGIN JUNE 1 FOR WHEAT, RYE, OATS, BARLEY AND FLAXSEED; SEPTEMBER 1 FOR CORN, SORGHUM, SOYBEANS AND SUNFLOWER SEEDS. INCLUDES WATERWAY SHIPMENTS TO CANADA.

SOYBEANS INSPECTED AND/OR WEIGHED FOR EXPORT BY PORT AREA AND COUNTRY OF DESTINATION REPORTED IN WEEK ENDING JUN 25, 2026 -- METRIC TONS --

Source: https://www.ams.usda.gov/mnreports/wa_gr101.txt

Table 18. Grain inspections for export by U.S. port region (1,000 metric tons)

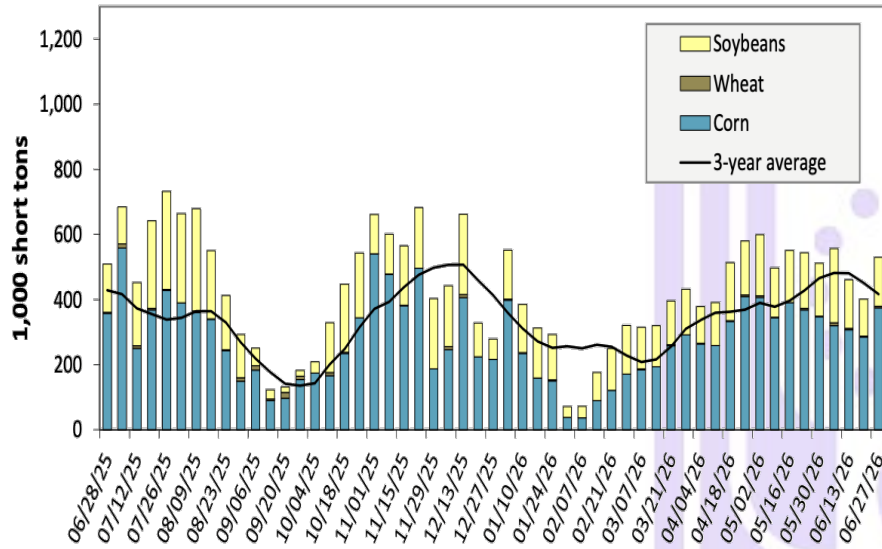
Port regions	Commodity	For the week ending 06/25/2026	Previous week	Current week as % of previous	2026 YTD	2025 YTD	2026 YTD as % of 2025 YTD	Last 4-weeks as % of:		2025 total
								Last year	Prior 3-yr. avg.	
Pacific Northwest	Corn	682	610	112	13,312	12,659	105	128	175	24,214
	Soybeans	0	0	n/a	4,096	1,966	208	n/a	n/a	2,957
	Wheat	204	256	80	5,083	5,348	95	132	118	12,271
	All grain	886	867	102	22,786	20,079	113	140	166	39,721
Mississippi Gulf	Corn	771	393	196	18,937	18,950	100	97	124	37,115
	Soybeans	202	116	174	11,931	10,301	116	105	117	23,350
	Wheat	73	51	144	1,522	1,653	92	118	139	3,980
	All grain	1,046	560	187	32,390	30,904	105	100	124	64,484
Texas Gulf	Corn	33	31	106	786	158	498	382	566	590
	Soybeans	0	0	n/a	100	106	94	n/a	n/a	1,431
	Wheat	13	41	32	1,771	1,925	92	36	72	4,690
	All grain	212	110	193	5,990	2,416	248	118	193	7,774
Interior	Corn	263	357	74	7,853	6,630	118	100	115	15,546
	Soybeans	164	155	106	3,640	3,331	109	109	132	7,713
	Wheat	56	39	145	1,498	1,433	105	95	89	3,104
	All grain	487	552	88	13,264	11,695	113	101	117	26,888
Great Lakes	Corn	10	24	41	251	21	n/a	164	491	414
	Soybeans	0	0	n/a	20	0	n/a	n/a	n/a	63
	Wheat	11	9	124	156	125	125	139	134	434
	All grain	21	33	64	427	145	294	149	196	911
Atlantic	Corn	28	52	53	880	173	508	754	710	607
	Soybeans	1	1	71	598	458	130	397	286	1,085
	Wheat	1	0	n/a	7	34	19	100	12	81
	All grain	29	54	55	1,484	666	223	598	457	1,773
All Regions	Corn	1,786	1,468	122	42,019	38,590	109	111	141	78,486
	Soybeans	419	272	154	20,895	16,266	128	129	147	36,852
	Wheat	358	396	90	10,036	10,517	95	97	109	24,560
	All grain	2,733	2,175	126	76,851	66,008	116	115	141	141,804

Note: Data include revisions from prior weeks; "All grain" includes corn, soybeans, wheat, sorghum, oats, barley, rye, sunflower, flaxseed, and mixed grains; "All regions" includes listed regions and other minor regions not listed; YTD = year-to-date; n/a = not available or no change. A "-" in the table indicates a percentage change with a near-zero denominator for the period.

Source: USDA, Federal Grain Inspection Service.

BARGE MOVEMENTS

Figure 12. Barge movements on the Mississippi River (Locks 27-Granite City, IL)



Barge – For the week ending June 27th, barged grain movements totaled 584,150 tons. This was 9% more than the previous week and 1% more than the same week last year.

Table 10. Barged grain movements (1,000 tons)

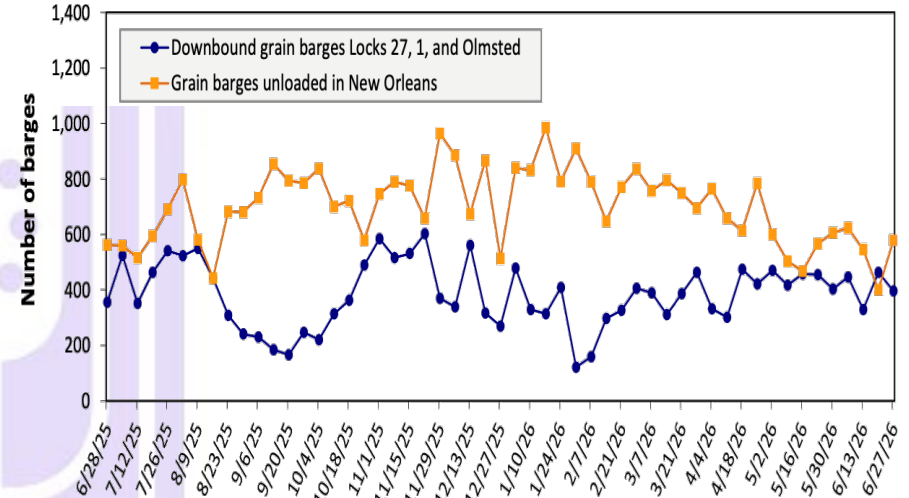
For the week ending 06/27/2026	Corn	Wheat	Soybeans	Other	Total
Mississippi River (Rock Island, IL (L15))	171	0	89	0	260
Mississippi River (Winfield, MO (L25))	238	5	96	0	338
Mississippi River (Alton, IL (L26))	359	5	126	0	490
Mississippi River (Granite City, IL (L27))	375	5	150	0	530
Illinois River (La Grange)	94	0	54	0	148
Ohio River (Olmsted)	26	4	9	0	39
Arkansas River (L1)	0	14	1	0	15
Weekly total - 2026	401	23	161	0	584
Weekly total - 2025	388	27	163	0	577
2026 YTD	8,330	462	5,207	45	14,044
2025 YTD	10,459	528	5,225	108	16,320
2026 as % of 2025 YTD	80	88	100	42	86
Last 4 weeks as % of 2025	72	93	114	0	83
Total 2025	20,015	1,259	11,322	166	32,761

Note: "Other" refers to oats, barley, sorghum, and rye. Total may not add up due to rounding. YTD = year to date. Weekly total, YTD, and calendar year total include Mississippi River lock 27, Ohio River Olmsted lock, and Arkansas Lock 1. "L" (as in "L15") refers to a lock, locks, or lock and dam facility.

Source: U.S. Army Corps of Engineers.

For the week ending June 27th, 396 barges moved down river, 67 fewer than the previous week. There were 578 grain barges unloaded in the New Orleans Region, 44% more than the previous week.

Figure 14. Grain barges for export in New Orleans region



CEREAL GRAINS

➤ Wheat Export Shipments and Sales

Wheat: Net sales of 300,100 metric tons (mts) for 2026/2027 primarily for Mexico (79,700 mts, including decreases of 22,700 mts), unknown destinations (68,200 mts, including decreases of 6,900 mts), Colombia (31,200 mts, including 28,000 mts switched from unknown destinations), Italy (30,000 mts), and Guatemala (24,500 mts, including 18,100 mts switched from unknown destinations, 7,100 mts switched from El Salvador, and decreases of 1,700 mts), were offset by reductions for El Salvador (600 mts) and Canada (200 mts).

Exports of 364,800 mts were primarily to South Korea (88,400 mts), Mexico (72,800 mts), the Philippines (66,000 mts), Japan (43,700 mts), and Colombia (31,200 mts).

Optional Origin Sales: For 2026/2027, decreases of 30,000 mts, all Mexico.

Source: USDA FAS - <https://apps.fas.usda.gov/esrqs/#/reports/weeklyexportsalesreportdetail>

➤ Rice Export Shipments and Sales

Rice: Net sales of 20,500 mts for 2025/2026 were down 7% from the previous week and 54% from the prior 4-week average. Increases primarily for Haiti (15,100 mts, including decreases of 100 mts), Guatemala (12,200 mts, including 12,000 mts switched from unknown destinations and decreases of 200 mts), Mexico (3,700 mts), Canada (800 mts, including decreases of 300 mts), and Jordan (600 mts), were offset by reductions for unknown destinations (12,000 mts) and Honduras (700 mts). Net sales of 25,900 mts for 2026/2027 reported for Colombia (20,000 mts) and unknown destinations (6,000 mts), were offset by reductions for Leeward and Windward Islands (100 mts).

Exports of 39,200 mts were down 60% from the previous week and 51% from the prior 4-week average. The destinations were primarily to Guatemala (12,200 mts), Honduras (9,900 mts), Haiti (7,100 mts), Mexico (6,100 mts), and Canada (2,000 mts).

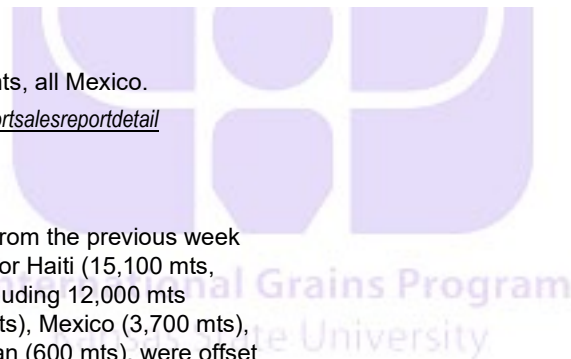
Source: USDA FAS - <https://apps.fas.usda.gov/esrqs/#/reports/weeklyexportsalesreportdetail>

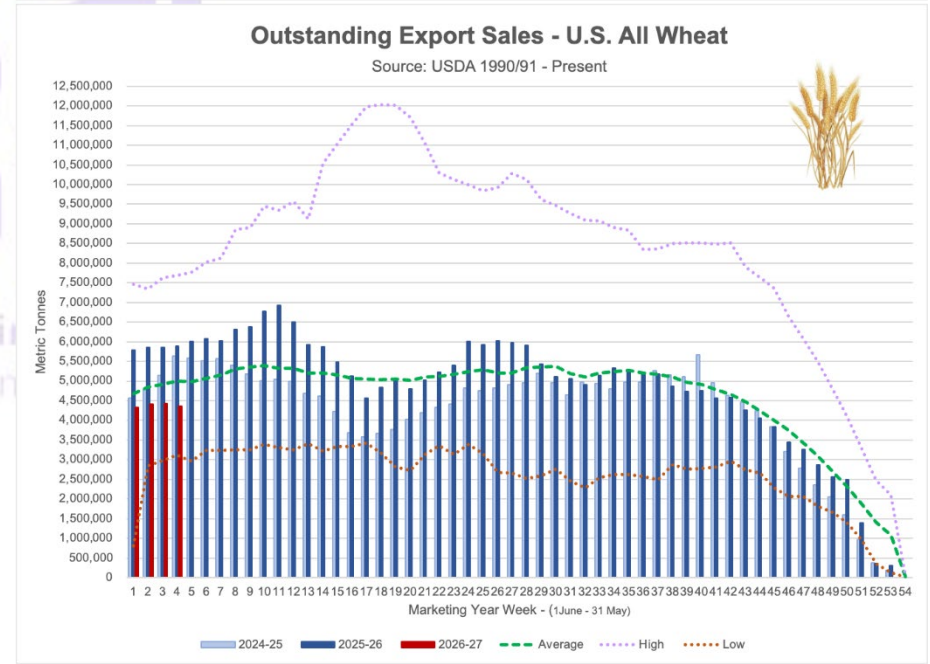
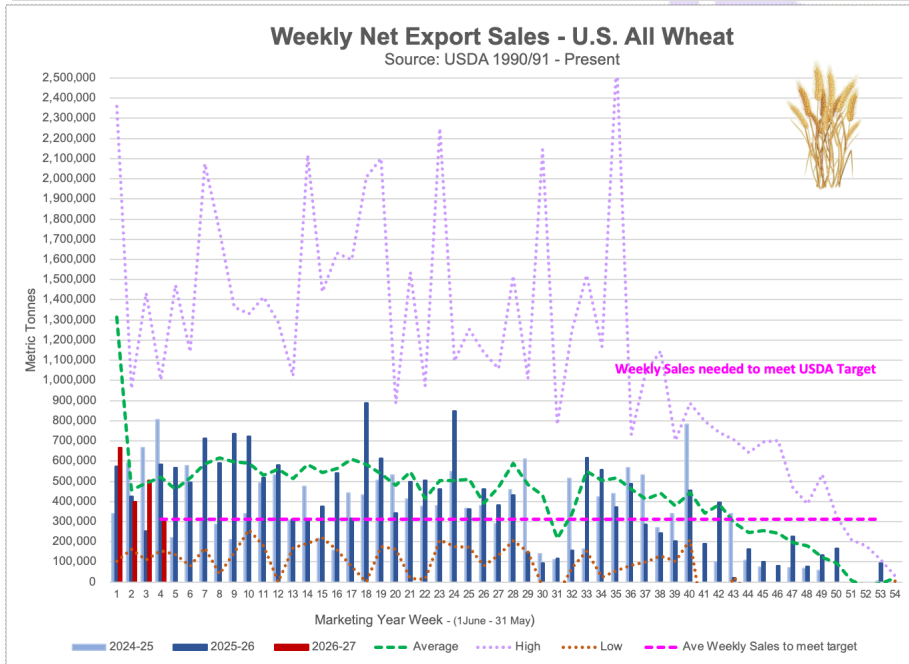
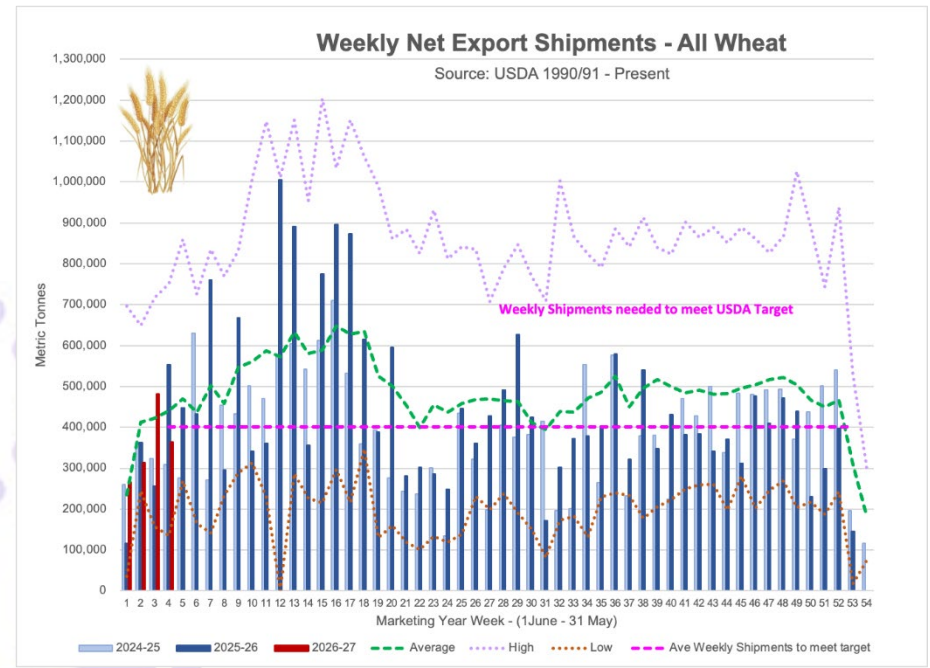
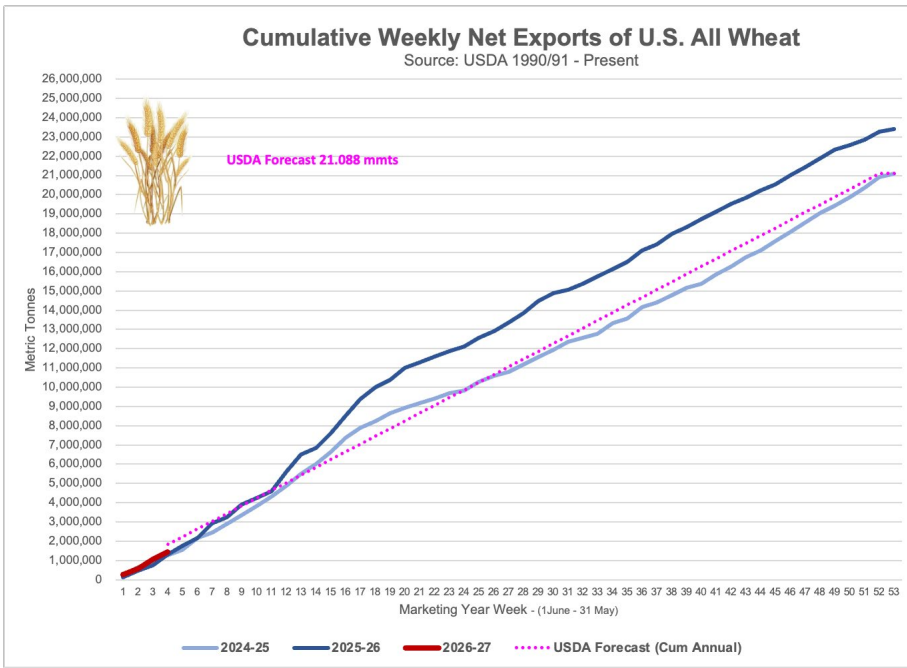
Table 17. Top 10 importers of all U.S. wheat

For the week ending 6/25/2026	Total commitments (1,000 mt)		% change current MY from last MY	Exports 3-year average 2023-25 (1,000 mt)
	YTD MY 2026/27	YTD MY 2025/26		
Mexico	1,249	1,304	-4	3,720
Philippines	799	758	5	2,677
Japan	783	606	29	2,050
Korea	623	364	71	1,881
Taiwan	275	301	-8	1,005
Nigeria	95	279	-66	878
China	NA	68	NA	863
Indonesia	66	220	-70	746
Thailand	175	233	-25	690
Vietnam	10	142	-93	581
Top 10 importers	4,074	4,274	-5	15,091
Total U.S. wheat export sales	5,797	7,178	-19	20,967
% of YTD current month's export projection	27%	29%	-	-
Change from prior week	300	586	-	-
Top 10 importers' share of U.S. wheat export sales	70%	60%	-	72%
USDA forecast, June 2026	21,092	24,766	-15	-

Note: The top 10 importers are based on USDA, Foreign Agricultural Service (FAS) marketing year ranking reports for marketing year (MY) 2025/26 (June 1 – May 31). "Total commitments" = cumulative exports (shipped) + outstanding sales (unshipped), from FAS weekly export sales report, or export sales query. Total commitments' change (net sales) from prior week could include revisions from previous week's outstanding sales or accumulated sales. In rightmost column, "Exports" = accumulated exports (as defined in FAS marketing year ranking reports). mt = metric ton; yr. = year; avg. = average; YTD = year to date; "-" = not applicable.

Source: USDA, Foreign Agricultural Service.





COARSE GRAINS

➤ Corn Export Shipments and Sales

Corn: Net sales of 732,100 mts for 2025/2026 were down 2% from the previous week and 23% from the prior 4-week average. Increases primarily for Mexico (261,000 mts, including decreases of 22,500 mts), Colombia (201,100 mts, including 100,000 mts switched from unknown destinations and decreases of 6,900 mts), Portugal (169,200 mts, including 55,000 mts switched from unknown destinations and decreases of 100 mts), Spain (155,000 mts, including 60,000 mts switched from unknown destinations), and Japan (144,300 mts, including 141,300 mts switched from unknown destinations and decreases of 6,300 mts), were offset by reductions for unknown destinations (631,000 mts), El Salvador (20,100 mts), and Morocco (3,000 mts). Net sales of 767,800 mts for 2026/2027 were primarily for Mexico (272,700 mts), unknown destinations (189,500 mts), South Korea (131,000 mts), Colombia (97,000 mts), and Honduras (44,500 mts).

Exports of 1,816,500 mts were up 21% from the previous week and 5% from the prior 4-week average. The destinations were primarily to Japan (359,000 mts), Mexico (353,100 mts), Taiwan (144,200 mts), South Korea (140,900 mts), and Colombia (109,400 mts).

Optional Origin Sales: For 2025/2026, new sales of 62,000 mts, all unknown destinations. The current outstanding balance of 62,000 mts, all unknown destinations.

➤ Grain Sorghum Export Shipments and Sales

Sorghum: Net sales of 25,400 mts for 2025/2026 were down 30% from the previous week and 64% from the prior 4-week average. Increases reported for China (92,900 mts, including 63,000 mts switched from unknown destinations and decreases of 7,200 mts) and Japan (1,600 mts, including decreases of 100 mts), were offset by reductions for unknown destinations (69,000 mts).

Exports of 170,900 mts were up noticeably from the previous week and up 33% from the prior 4-week average. The destinations were to China (169,600 mts) and Japan (1,300 mts).

Source: USDA FAS - <https://apps.fas.usda.gov/esrqs/#/reports/weeklyexportsalesreportdetail>

Table 15. Top 5 importers of U.S. corn

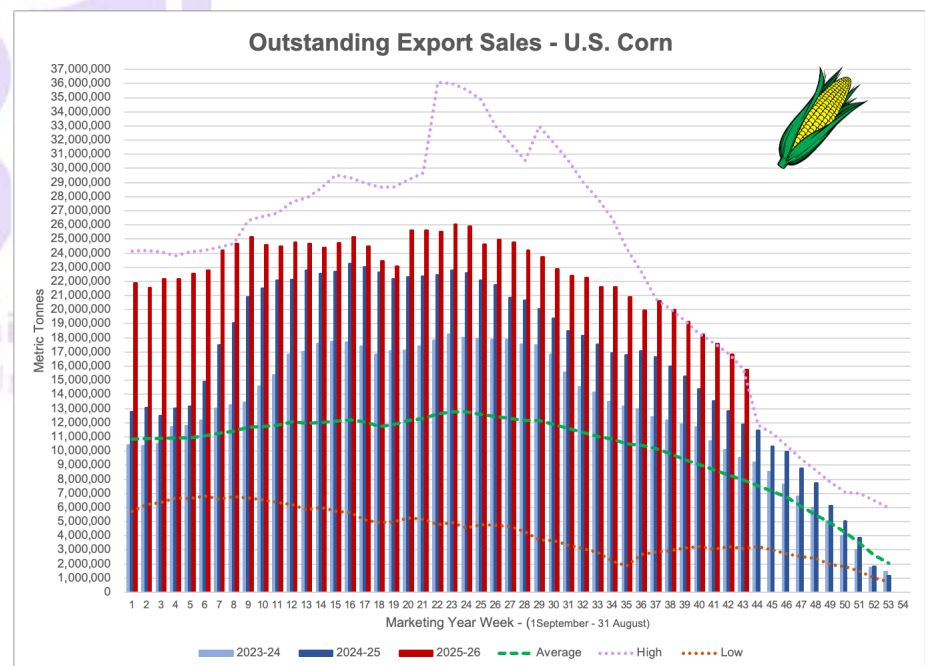
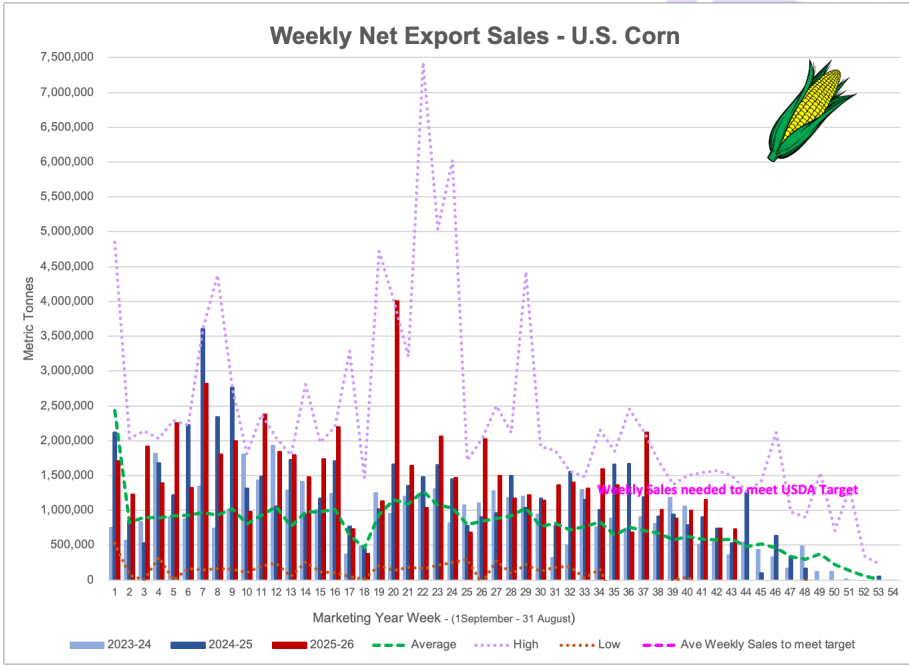
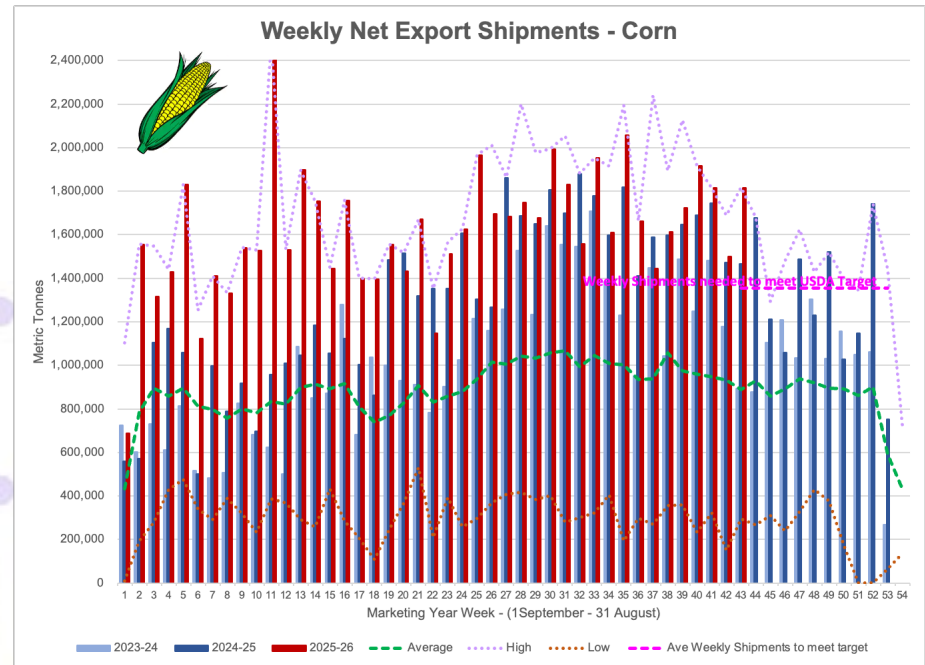
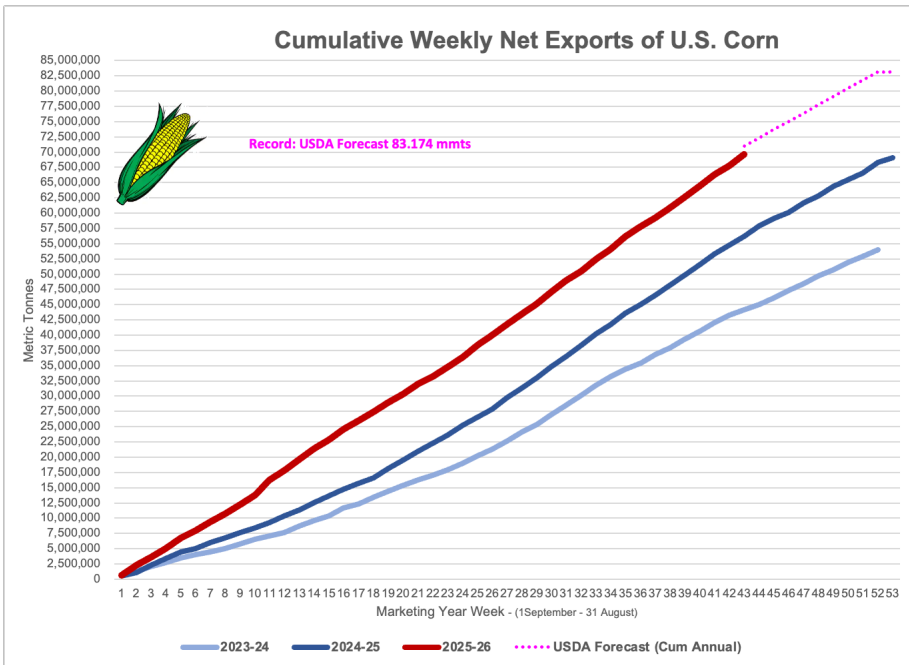
For the week ending 6/25/2026	Total commitments (1,000 mt)			% change current MY from last MY	Exports 3-year average 2022-24 (1,000 mt)
	YTD MY 2026/27	YTD MY 2025/26	YTD MY 2024/25		
Mexico	2,810	24,374	22,102	10	19,839
Japan	1290	15,401	12,365	25	10,478
Colombia	215	8,154	7,209	13	5,493
China	0	0	33	-100	3,461
Korea	610	8,553	5,923	44	3,127
Top 5 importers	4,925	56,483	47,632	19	42,399
Total U.S. corn export sales	6,147	85,399	68,107	25	54,276
% of YTD current month's export projection	8%	101%	94%	-	-
Change from prior week	768	732	533	-	-
Top 5 importers' share of U.S. corn export sales	80%	66%	70%	-	78%
USDA forecast June 2026	80,014	84,459	72,597	16	-
Corn use for ethanol USDA forecast June 2026	142,240	141,605	138,075	3	-

Note: The top 5 importers are based on USDA, Foreign Agricultural Service (FAS) marketing year ranking reports for marketing year (MY) 2024/25 (September 1 - August 31). "Total commitments" = cumulative exports (shipped) + outstanding sales (unshipped), from FAS weekly export sales report, or export sales query. Total commitments' change (net sales) from prior week could include revisions from previous week's outstanding sales or accumulated sales. In rightmost column, "Exports" = accumulated exports (as defined in FAS marketing year ranking reports). mt = metric ton; yr. = year; avg. = average; YTD = year to date; "-" = not applicable.

Source: USDA, Foreign Agricultural Service.

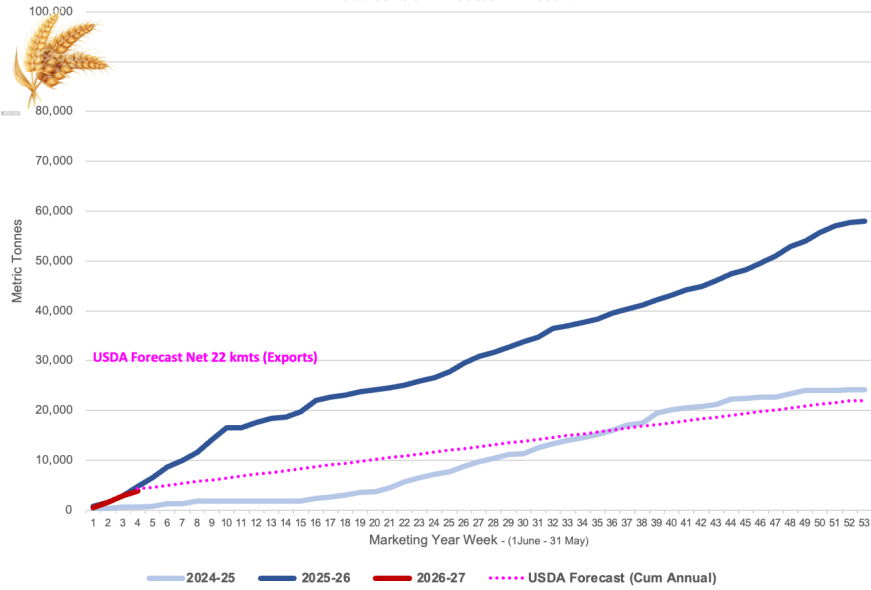
➤ Barley Export Shipments and Sales

Barley: Total net sales of 1,000 mts for 2026/2027 were for Canada. Exports of 1,000 mts were to Canada (500 mts) and Japan (500 mts).



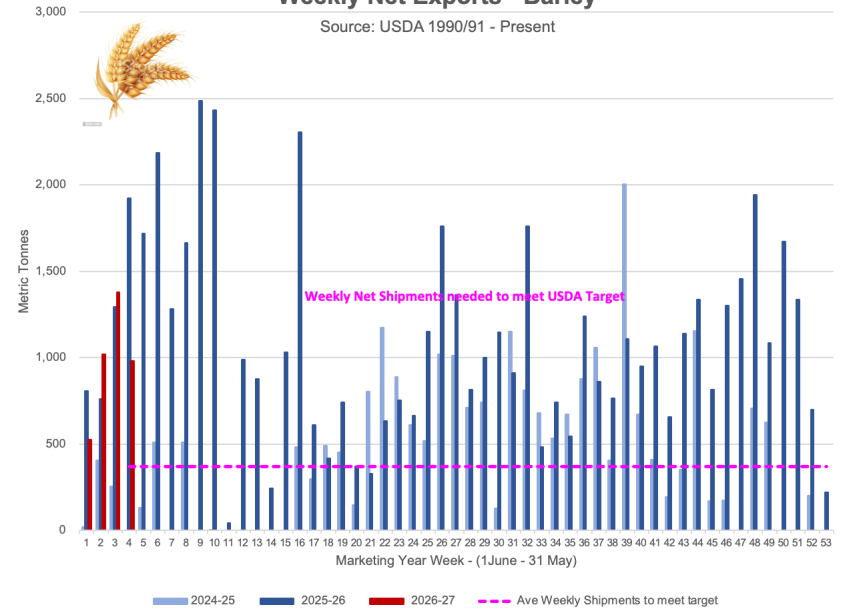
Cumulative Weekly Net Exports of U.S. Barley

Source: USDA 1990/91 - Present



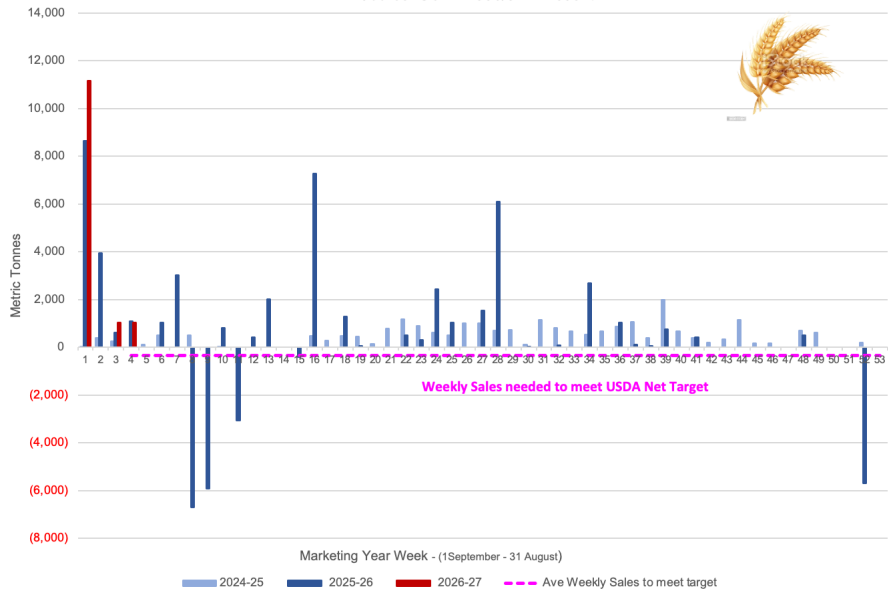
Weekly Net Exports - Barley

Source: USDA 1990/91 - Present



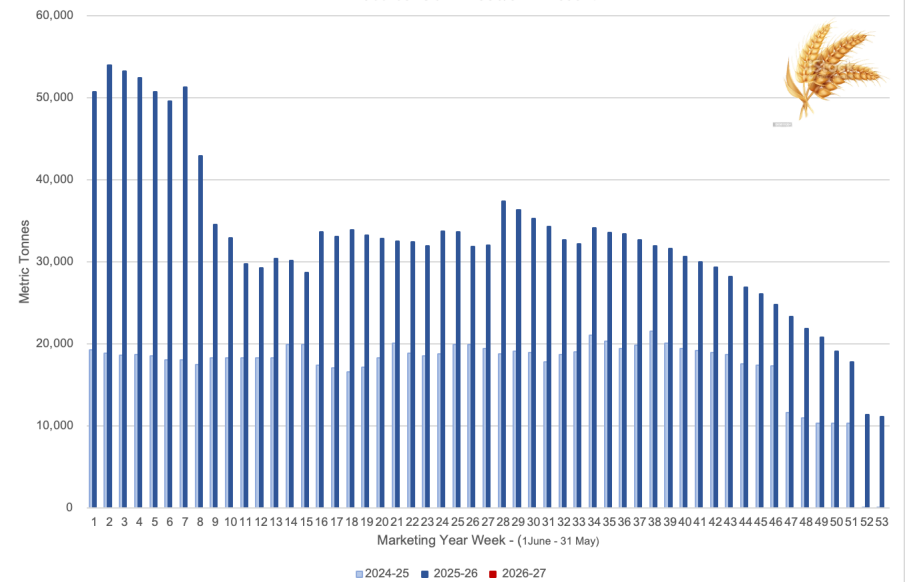
Weekly Net Exports Sales - U.S. Barley

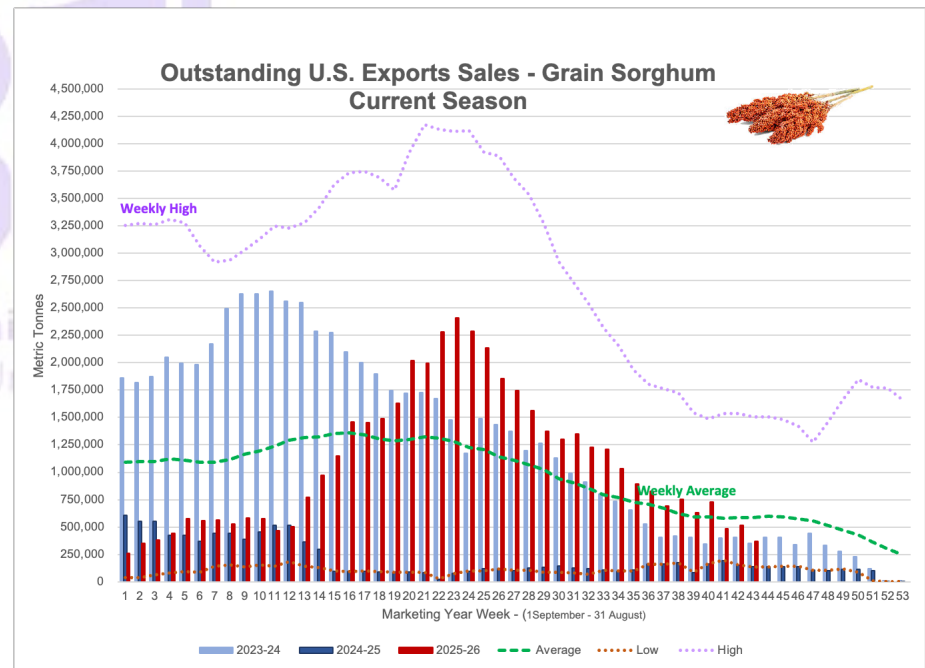
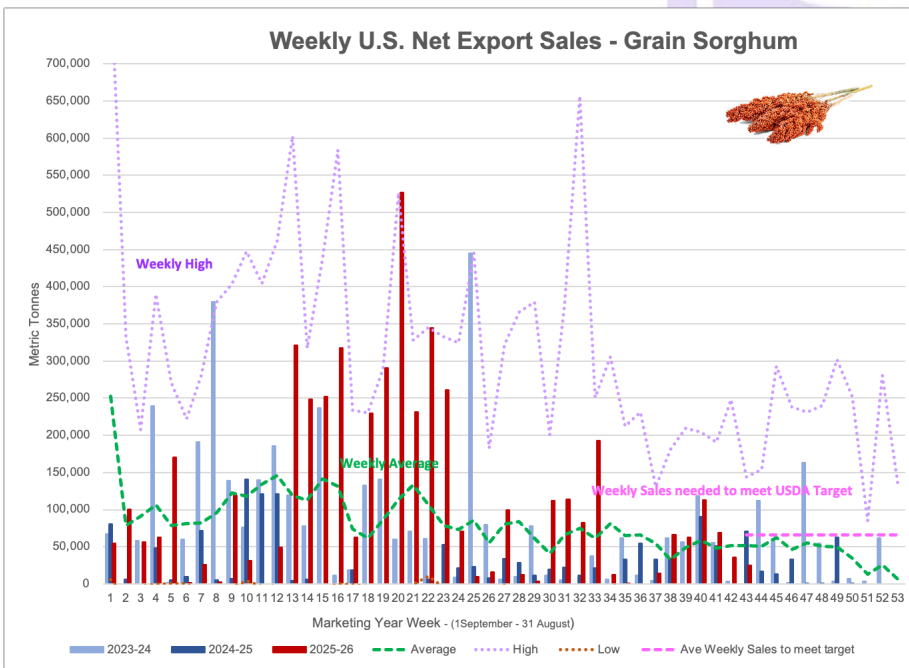
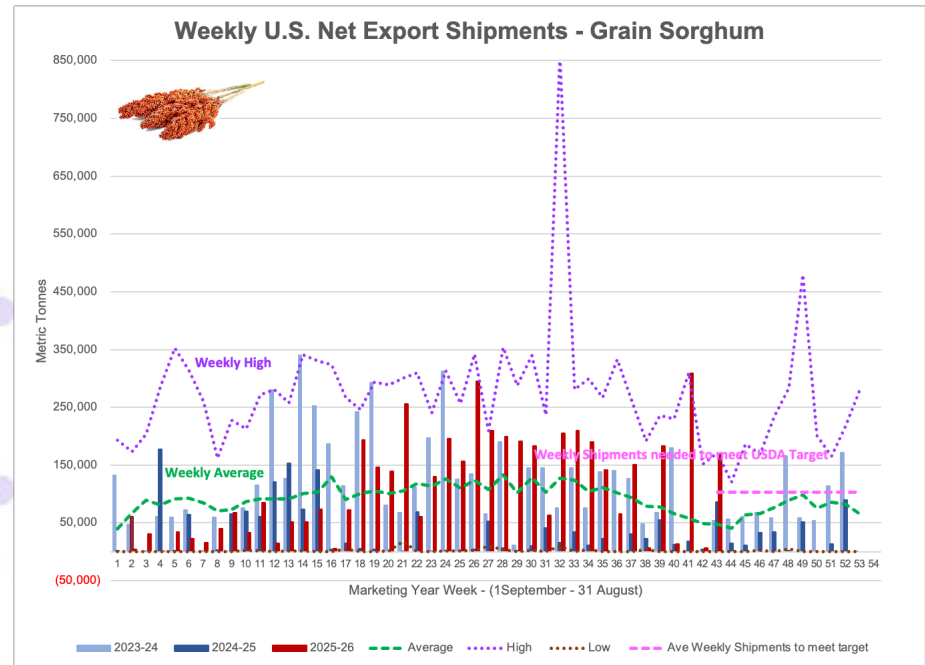
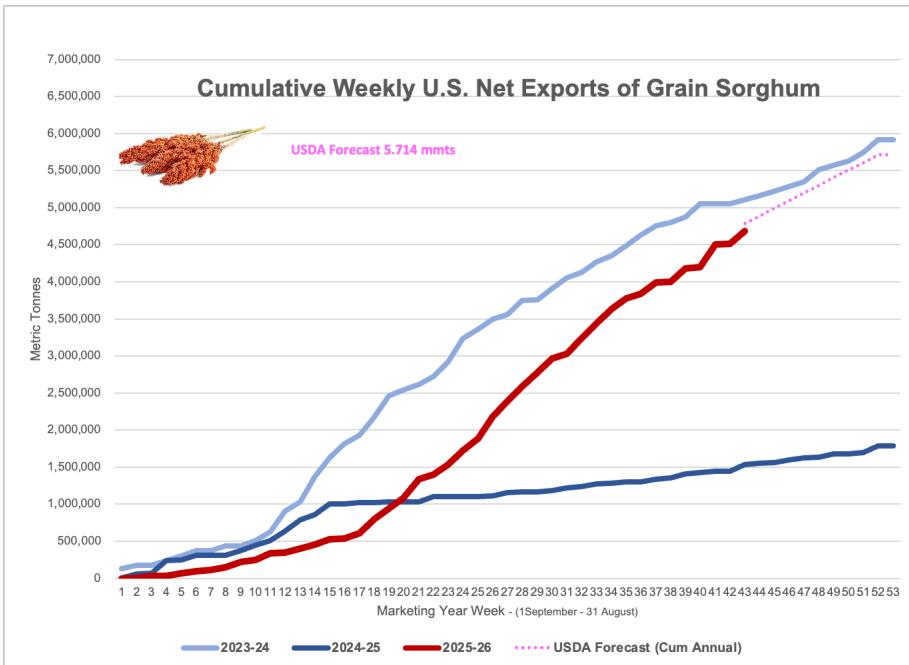
Source: USDA 1990/91 - Present



Outstanding Net Exports Sales - U.S. Barley

Source: USDA 1990/91 - Present





OILSEED COMPLEX

➤ Soybean Export Shipments and Sales

Soybeans: Net sales of 41,800 mts for 2025/2026--a marketing-year low--were down 91% from the previous week and 88% from the prior 4-week average. Increases primarily for China (65,400 mts, including 68,000 mts switched from unknown destinations and decreases of 2,600 mts), Japan (27,600 mts, including 25,400 mts switched from unknown destinations and decreases of 900 mts), Taiwan (10,400 mts), Malaysia (7,200 mts), and Venezuela (7,000 mts), were offset by reductions for unknown destinations (88,500 mts), Egypt (900 mts), and Barbados (200 mts). Net sales of 182,500 mts for 2026/2027 were reported for Mexico (182,100 mts) and Vietnam (400 mts).

Exports of 388,000 mts were up 79% from the previous week, but down 11% from the prior 4-week average. The destinations were primarily to Mexico (118,200 mts), Japan (102,200 mts), China (65,400 mts), Egypt (54,100 mts), and Indonesia (17,600 mts).

Exports for Own Account: For 2025/2026, the current exports for own account outstanding balance of 1,800 mts, all Taiwan.

➤ Soybean Meal Export Shipments and Sales

Soybean Cake and Meal: Net sales of 239,100 mts for 2025/2026 were up 56% from the previous week, but down 5% from the prior 4-week average. Increases primarily for Colombia (85,000 mts, including decreases of 7,800 mts), the Philippines (57,300 mts), Mexico (52,500 mts), Ecuador (50,600 mts, including 50,000 mts switched from unknown destinations), and Japan (17,300 mts, including 3,000 mts switched from unknown destinations and decreases of 700 mts), were offset by reductions primarily for unknown destinations (62,000 mts), El Salvador (10,100 mts), the United Kingdom (9,000 mts), Italy (5,000 mts), and Venezuela (1,100 mts). Net sales of 174,500 mts for 2026/2027 were primarily for Mexico (71,600 mts), the Philippines (48,000 mts), Honduras (19,800 mts), Costa Rica (10,000 mts), and Guatemala (9,000 mts).

Exports of 436,000 mts were up 56% from the previous week and 61% from the prior 4-week average. The destinations were primarily to the Philippines (150,000 mts), Italy (55,000 mts), Mexico (54,000 mts), Ecuador (50,600 mts), and the Netherlands (22,700 mts).

Table 16. Top 5 importers of U.S. soybeans

For the week ending 6/25/2026	Total commitments (1,000 mt)			% change current MY from last MY	Exports 3-year average 2022-24 (1,000 mt)
	YTD MY 2026/27	YTD MY 2025/26	YTD MY 2024/25		
China	200	12,026	22,479	-47	26,078
Mexico	534	4,918	5,056	-3	4,762
Japan	74	2,162	1,967	10	2,107
Egypt	60	4,896	3,285	49	2,098
Indonesia	40	2,273	1,862	22	1,997
Top 5 importers	908	26,275	34,649	-24	37,042
Total U.S. soybean export sales	2,421	41,081	49,873	-18	48,941
% of YTD current month's export projection	5%	100%	97%	-	-
Change from prior week	183	42	462	-	-
Top 5 importers' share of U.S. soybean export sales	38%	64%	69%	-	76%
USDA forecast, June 2026	44,361	41,095	51,220	-20	-

Note: The top 5 importers are based on USDA, Foreign Agricultural Service (FAS) marketing year ranking reports for marketing year (MY) 2024/25 (September 1 - August 31). "Total commitments" = cumulative exports (shipped) + outstanding sales (unshipped), from FAS weekly export sales report, or export sales query. Total commitments' change (net sales) from prior week could include revisions from previous week's outstanding sales or accumulated sales. In rightmost column, "Exports" = accumulated exports (as defined in FAS marketing year ranking reports). mt = metric ton; yr. = year; avg. = average; YTD = year to date; "-" = not applicable. Source: USDA, Foreign Agricultural Service.

Optional Origin Sales: For 2025/2026, the current outstanding balance of 68,000 mts, all Ecuador. For 2026/2027, the current outstanding balance of 2,000 mts, all Ecuador.

➤ Soybean Oil Export Shipments and Sales

Soybean Oil: Net sales reductions of 1,500 mts for 2025/2026 were down noticeably from the previous week and from the prior 4-week average. Increases reported for Honduras (100 mts), were more than offset by reductions for Canada (1,200 mts) and Mexico (400 mts).

Exports of 800 mts were down 58% from the previous week and 47% from the prior 4-week average. The destinations were to Canada (500 mts), Mexico (300 mts), and Honduras (100 mts).

Source: USDA FAS - <https://apps.fas.usda.gov/esrqs/#/reports/weeklyexportsalesreportdetail>

