



# IGP Export Pace

## Wheat, Corn, Grain Sorghum, and Soybean Complex

26<sup>th</sup> June 2026  
Department of Grain & Food Science,  
Kansas State University

by Guy H. Allen – Senior Economist, International Grains Program, Kansas State University

For timely market news and quotes see IGP Market Information Website:

<http://www.ksu.agricharts.com/>

Find me on Twitter [igpguy1](#)

[@igpguy1](#)

**KSU Ag Manager Link:** <https://www.agmanager.info/grain-marketing/publications/us-grain-exports-and-trade>

**KSU Agriculture Today Podcast Link:** <https://agtodayksu.libsyn.com/timeliness-of-corn-and-soybean-plantingworld-grain-supply-and-demand>

**IGP Market Information:** <http://www.dtnigp.com/index.cfm>

**USDA Transportation Report:** <https://www.ams.usda.gov/services/transportation-analysis/gtr>

**USDA FAS Historical Grain Shipments:** <https://apps.fas.usda.gov/export-sales/wkHistData.htm>, <https://apps.fas.usda.gov/export-sales/complete.htm>

### Contents

<b>U.S. EXPORT ACTIVITY</b> .....	<b>1</b>
➤ <b>Export Sales</b> .....	<b>1</b>
➤ <b>Vessel Loadings</b> .....	<b>1</b>
➤ <b>Export Inspections</b> .....	<b>2</b>
<b>CEREAL GRAINS</b> .....	<b>5</b>
➤ <b>Wheat Export Shipments and Sales</b> .....	<b>5</b>
➤ <b>Rice Export Shipments and Sales</b> .....	<b>5</b>
<b>COARSE GRAINS</b> .....	<b>7</b>
➤ <b>Corn Export Shipments and Sales</b> .....	<b>7</b>
➤ <b>Grain Sorghum Export Shipments and Sales</b> .....	<b>7</b>
➤ <b>Barley Export Shipments and Sales</b> .....	<b>7</b>
<b>OILSEED COMPLEX</b> .....	<b>11</b>
➤ <b>Soybean Export Shipments and Sales</b> .....	<b>11</b>
➤ <b>Soybean Meal Export Shipments and Sales</b> .....	<b>11</b>
➤ <b>Soybean Oil Export Shipments and Sales</b> .....	<b>11</b>

- This summary based on reports for the 26<sup>th</sup> of June 2026
- Outstanding Export Sales (Unshipped Balances) on the 18<sup>th</sup> of May 2026
- Export Shipments in Current Marketing Year

- Daily Sales Reported for the 25<sup>th</sup> of June 2026

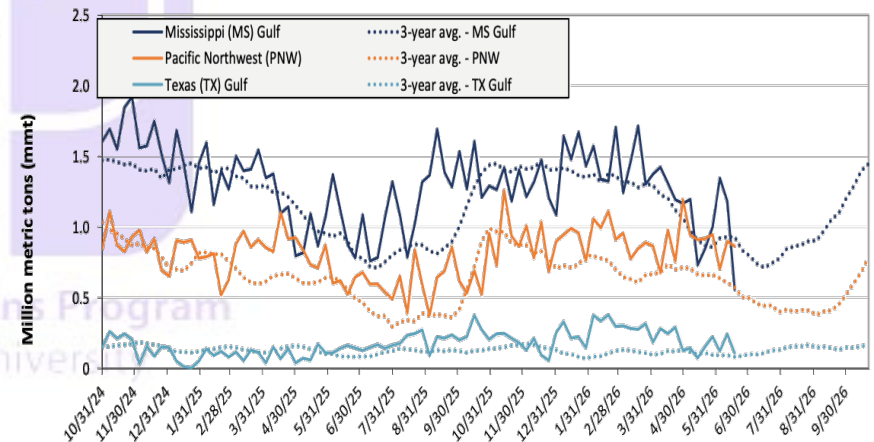
### U.S. EXPORT ACTIVITY

#### ➤ Export Sales

- Export Sales data for the week ending June 18, unshipped balances of corn, soybeans, and wheat for marketing year (MY) 2025/26 totaled 21.13 mmts, down 2% from last week and up 27% from the same time last year.
- Net corn export sales were .74 mmts, down 36% from last week.
- Net soybean export sales were .46 mmts, up 7% from last week.
- Net wheat export sales were .50 mmts, up 25% from last week.

#### ➤ Vessel Loadings

Figure 18. U.S. grain inspections for U.S. Gulf and PNW (wheat, corn, and soybeans)



**Ocean** - For the week ending June 18, 20 oceangoing grain vessels were loaded in the Gulf—5% fewer than the same period last year. Within the next 10 days (starting June 19), 39 vessels were expected to be loaded – 11% fewer than the same period last year. As of June 18, the rate for shipping a metric ton (mt) of grain from the U.S.

**Table 14. U.S. export balances and cumulative exports (1,000 metric tons)**

Grain Exports	Wheat						Corn	Soybeans	Total	
	Hard red winter (HRW)	Soft red winter (SRW)	Hard red spring (HRS)	Soft white wheat (SWW)	Durum	All wheat				
Current unshipped (outstanding) export sales	For the week ending 06/18/2026	989	754	1,283	1,279	130	4,435	16,853	4,274	25,563
	This week year ago	2,199	1,097	1,642	830	88	5,856	12,816	3,864	22,536
	Last 4 wks. as % of same period in prior marketing year	35	50	60	115	101	58	140	109	113
Current shipped (cumulative) exports sales	Current MYTD	374	106	314	241	27	1,062	67,814	36,765	105,641
	Prior MYTD	342	64	201	125	4	736	54,758	45,546	101,041
	Current MYTD as % of prior MYTD	109	166	156	194	762	144	124	81	105
	Total 2025/26	8,243	3,191	6,078	5,207	622	23,408	-	-	-
	Total 2024/25	5,377	3,095	6,560	5,730	335	21,097	69,081	50,106	140,284
Total 2023/24	3,535	4,260	6,314	3,906	526	18,540	54,277	44,510	117,328	

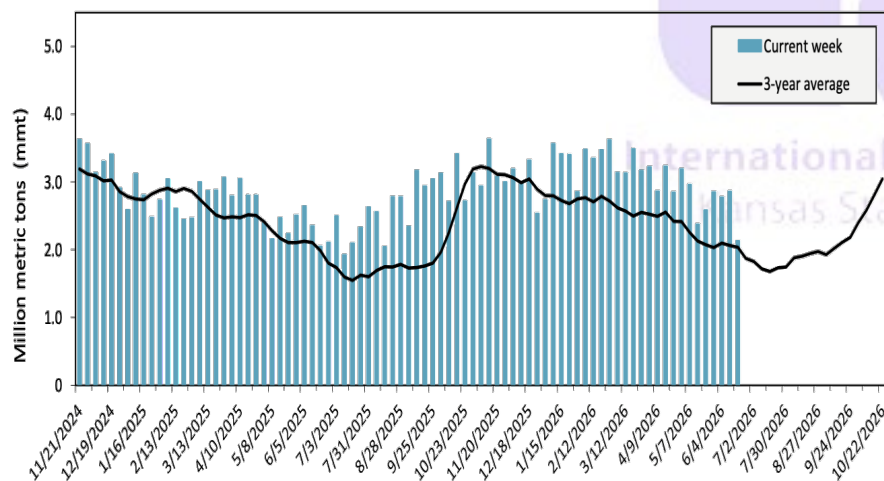
Note: The marketing year for wheat is June 1 to May 31 and, for corn and soybeans, September 1 to August 31. YTD = year-to-date. wks. = weeks. MYTD = marketing year to date.

Source: USDA, Foreign Agricultural Service.

Gulf to Japan was \$71.50, down 1% from the previous week. The rate from the Pacific Northwest to Japan was \$36.75 per mt, down 1% from the previous week.

**Export Inspections**

Figure 17. U.S. grain inspected for export (wheat, corn, and soybeans)



**GRAINS INSPECTED AND/OR WEIGHED FOR EXPORT REPORTED IN WEEK ENDING JUN 18, 2026 -- METRIC TONS --**

GRAIN	WEEK ENDING			CURRENT MARKET YEAR TO DATE	PREVIOUS MARKET YEAR TO DATE
	06/18/2026	06/11/2026	06/19/2025		
BARLEY	0	122	24	122	122
CORN	1,454,252	1,650,180	1,504,081	67,082,437	53,574,252
FLAXSEED	24	24	0	48	24
MIXED	0	0	0	0	122
OATS	0	0	499	0	1,297
RYE	0	0	0	0	0
SORGHUM	39,072	313,859	80,481	4,422,528	1,934,201
SOYBEANS	241,045	533,438	202,391	36,848,469	45,654,991
SUNFLOWER	0	0	0	40	0
WHEAT	393,150	358,098	254,882	971,031	844,968
Total	2,127,543	2,855,721	2,042,358	109,324,675	102,009,977

CROP MARKETING YEARS BEGIN JUNE 1 FOR WHEAT, RYE, OATS, BARLEY AND FLAXSEED; SEPTEMBER 1 FOR CORN, SORGHUM, SOYBEANS AND SUNFLOWER SEEDS. INCLUDES WATERWAY SHIPMENTS TO CANADA.

**SOYBEANS INSPECTED AND/OR WEIGHED FOR EXPORT BY PORT AREA AND COUNTRY OF DESTINATION REPORTED IN WEEK ENDING JUN 18, 2026 -- METRIC TONS --**

Source: [https://www.ams.usda.gov/mnreports/wa\\_gr101.txt](https://www.ams.usda.gov/mnreports/wa_gr101.txt)

Table 18. Grain inspections for export by U.S. port region (1,000 metric tons)

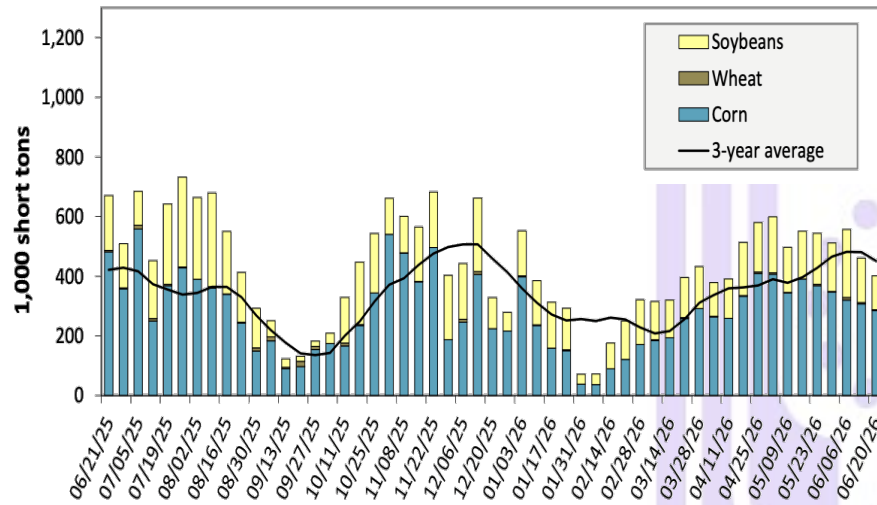
Port regions	Commodity	For the week ending 06/18/2026	Previous week	Current week as % of previous	2026 YTD	2025 YTD	2026 YTD as % of 2025 YTD	Last 4-weeks as % of:		2025 total
								Last year	Prior 3-yr. avg.	
Pacific Northwest	Corn	610	461	132	12,630	12,278	103	116	148	24,214
	Soybeans	0	69	0	4,096	1,966	208	n/a	n/a	2,957
	Wheat	256	232	110	4,879	5,181	94	102	113	12,271
	All grain	867	900	96	21,900	19,520	112	125	149	39,721
Mississippi Gulf	Corn	393	862	46	18,167	18,272	99	90	107	37,115
	Soybeans	116	278	42	11,729	10,264	114	106	123	23,350
	Wheat	51	45	113	1,449	1,598	91	118	112	3,980
	All grain	560	1,185	47	31,344	30,134	104	94	110	64,484
Texas Gulf	Corn	31	36	88	753	147	513	454	508	590
	Soybeans	0	0	n/a	100	106	94	n/a	n/a	1,431
	Wheat	41	41	100	1,758	1,769	99	49	89	4,690
	All grain	110	245	45	5,778	2,249	257	139	210	7,774
Interior	Corn	344	258	133	7,576	6,346	119	110	122	15,546
	Soybeans	123	136	91	3,446	3,160	109	112	131	7,713
	Wheat	36	40	90	1,438	1,376	104	101	96	3,104
	All grain	505	443	114	12,729	11,184	114	108	122	26,888
Great Lakes	Corn	24	0	n/a	241	21	n/a	116	348	414
	Soybeans	0	0	n/a	20	0	n/a	n/a	n/a	63
	Wheat	9	0	n/a	145	104	139	281	109	434
	All grain	33	0	n/a	406	125	326	175	154	911
Atlantic	Corn	52	34	154	852	173	492	610	806	607
	Soybeans	1	51	3	597	455	131	458	320	1,085
	Wheat	0	0	n/a	6	34	18	n/a	0	81
	All grain	54	85	64	1,455	662	220	559	509	1,773
All Regions	Corn	1,454	1,650	88	40,220	37,238	108	105	126	78,486
	Soybeans	241	533	45	20,445	16,055	127	132	152	36,852
	Wheat	393	358	110	9,675	10,062	96	93	106	24,560
	All grain	2,128	2,858	74	74,069	63,978	116	111	130	141,804

Note: Data include revisions from prior weeks; "All grain" includes corn, soybeans, wheat, sorghum, oats, barley, rye, sunflower, flaxseed, and mixed grains; "All regions" includes listed regions and other minor regions not listed; YTD = year-to-date; n/a = not available or no change. A "-" in the table indicates a percentage change with a near-zero denominator for the period.

Source: USDA, Federal Grain Inspection Service.

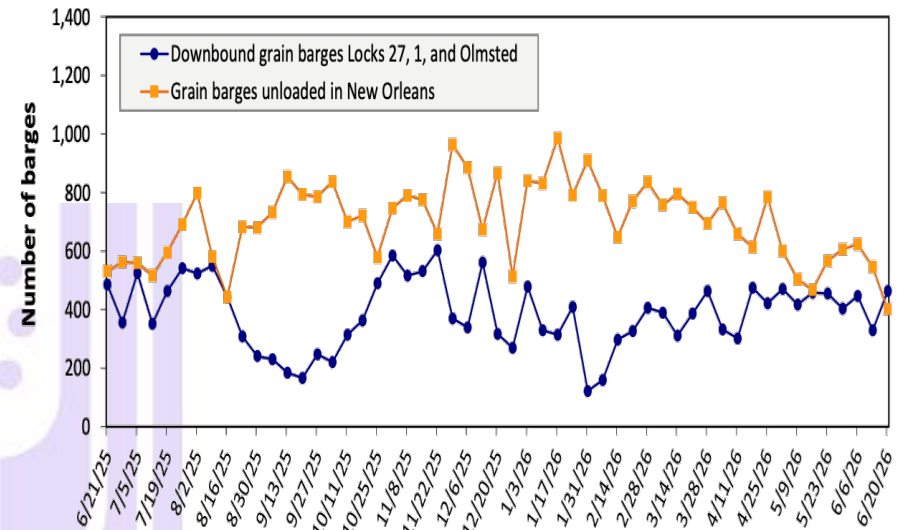
## BARGE MOVEMENTS

Figure 12. Barge movements on the Mississippi River (Locks 27-Granite City, IL)



**Barge** – For the week ending June 20<sup>th</sup>, barged grain movements totaled 538,050 tons. This was 4% more than the previous week and 29% less than the same week last year.

Figure 14. Grain barges for export in New Orleans region



For the week ending June 20<sup>th</sup>, 463 barges moved downriver, 133 more than the previous week. There were 401 grain barges unloaded in the New Orleans Region, 27% fewer than the previous week.

Table 10. Barged grain movements (1,000 tons)

For the week ending 06/20/2026	Corn	Wheat	Soybeans	Other	Total
Mississippi River (Rock Island, IL (L15))	120	6	52	0	178
Mississippi River (Winfield, MO (L25))	163	2	70	0	234
Mississippi River (Alton, IL (L26))	292	3	94	0	390
Mississippi River (Granite City, IL (L27))	285	3	113	0	402
Illinois River (La Grange)	33	0	9	0	43
Ohio River (Olmsted)	66	16	39	0	121
Arkansas River (L1)	1	14	0	0	15
Weekly total - 2026	352	33	153	0	538
Weekly total - 2025	514	29	213	4	760
2026 YTD	7,929	440	5,046	45	13,460
2025 YTD	10,071	501	5,062	108	15,743
2026 as % of 2025 YTD	79	88	100	42	85
Last 4 weeks as % of 2025	62	128	118	0	76
Total 2025	20,015	1,259	11,322	166	32,761

Note: "Other" refers to oats, barley, sorghum, and rye. Total may not add up due to rounding. YTD = year to date. Weekly total, YTD, and calendar year total include Mississippi River lock 27, Ohio River Olmsted lock, and Arkansas Lock 1. "L" (as in "L15") refers to a lock, locks, or lock and dam facility.  
Source: U.S. Army Corps of Engineers.

## CEREAL GRAINS

### ➤ Wheat Export Shipments and Sales

**Wheat:** Net sales of 504,500 metric tons (mts) for 2026/2027 primarily for Mexico (204,400 mts, including decreases of 100 mts), Japan (118,700 mts, including decreases of 100 mts), Bangladesh (55,000 mts), Chile (55,000 mts, including 45,000 mts switched from unknown destinations), and South Korea (23,700 mts, including decreases of 3,500 mts), were offset by reductions for Jamaica (7,500 mts) and Italy (700 mts).

Exports of 481,500 mts were primarily to Japan (128,800 mts), the Philippines (115,900 mts), South Korea (78,300 mts), Nigeria (42,200 mts), and Venezuela (31,800 mts).

Optional Origin Sales: For 2026/2027, the current optional origin of 30,000 mts, all Mexico.

Source: USDA FAS -

<https://apps.fas.usda.gov/esrqs#/reports/weeklyexportsalesreportdetail>

### ➤ Rice Export Shipments and Sales

**Rice:** Net sales of 22,100 mts for 2025/2026 were down 78 percent from the previous week and 46% from the prior 4-week average. Increases primarily for El Salvador (17,100 mts, including 12,000 mts switched from unknown destinations), Mexico (12,500 mts), Canada (2,500 mts, including decreases of 100 mts), Jordan (800 mts), and Morocco (200 mts), were offset by reductions for unknown destinations (12,000 mts). Net sales of 30,000 mts for 2026/2027 were reported for Japan (24,000 mts) and unknown destinations (6,000 mts). Exports of 99,100 mts were down 23% from the previous week, but up 52% from the prior 4-week average. The destinations were primarily to Iraq (44,000 mts), Japan (19,500 mts), El Salvador (12,100 mts), Colombia (9,400 mts), and Mexico (4,800 mts).

Source: USDA FAS - <https://apps.fas.usda.gov/esrqs#/reports/weeklyexportsalesreportdetail>

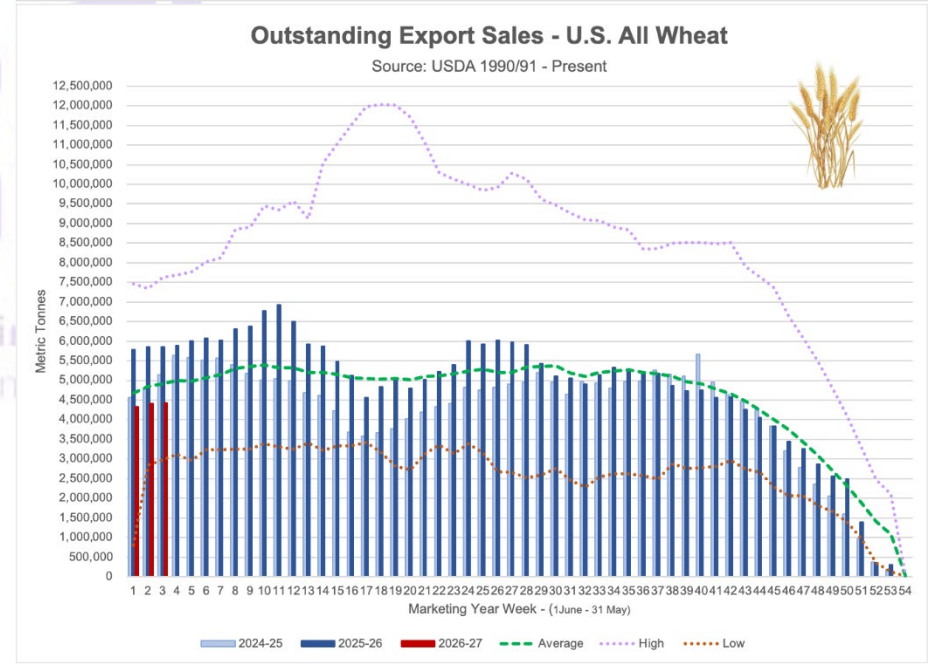
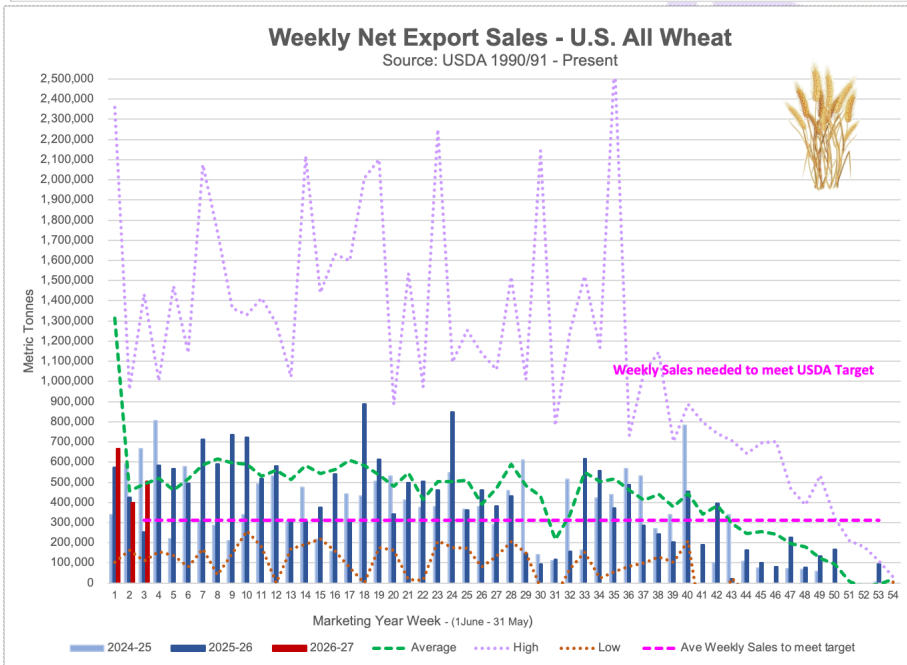
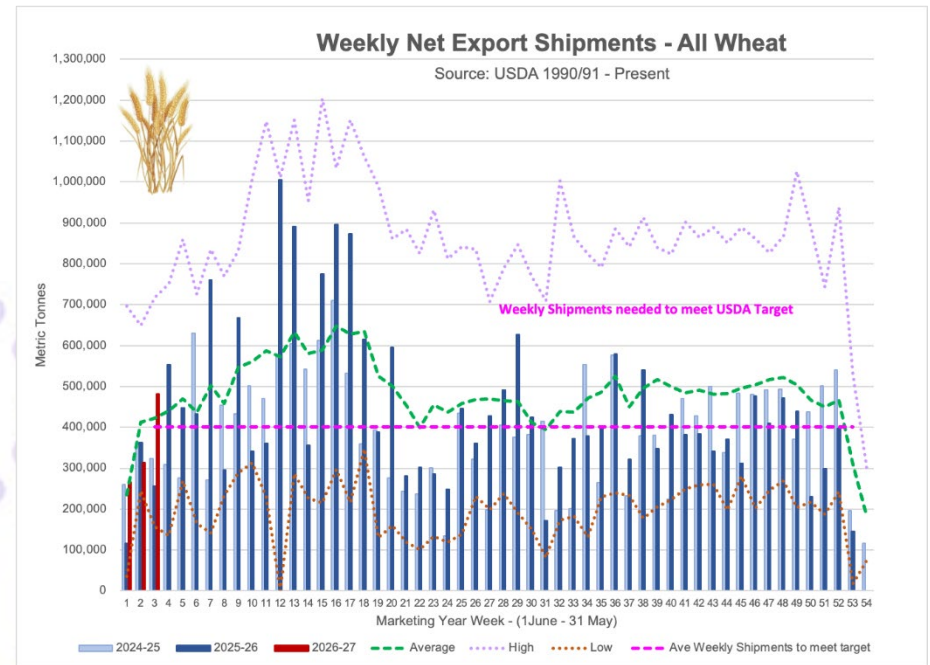
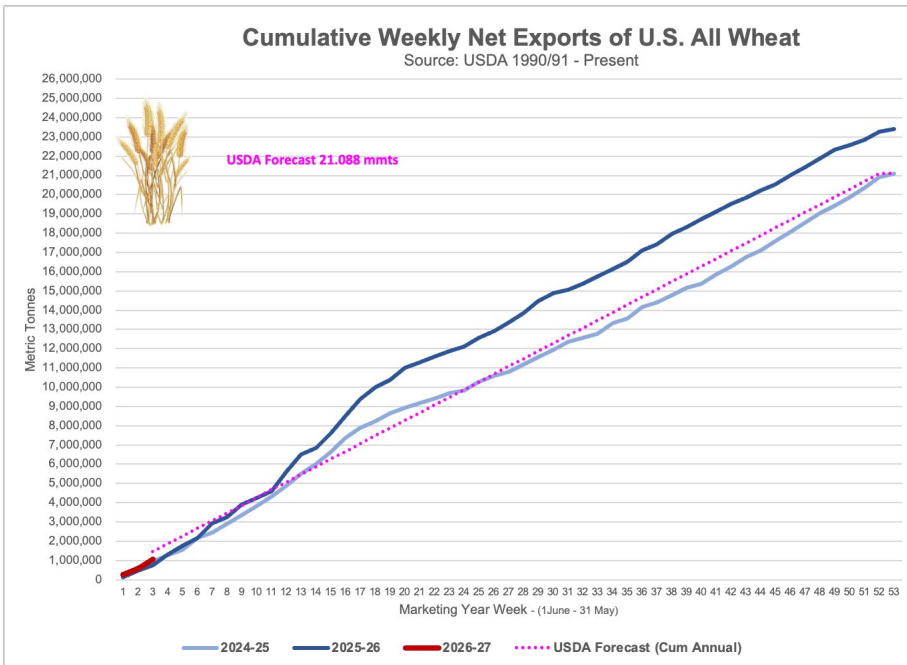
Table 17. Top 10 importers of all U.S. wheat

For the week ending 6/18/2026	Total commitments (1,000 mt)		% change current MY from last MY	Exports 3-year average 2023-25 (1,000 mt)
	YTD MY 2026/27	YTD MY 2025/26		
Mexico	1,169	1,247	-6	3,720
Philippines	793	596	33	2,677
Japan	782	606	29	2,050
Korea	615	332	86	1,881
Taiwan	275	299	-8	1,005
Nigeria	95	239	-60	878
China	NA	NA	NA	863
Indonesia	66	214	-69	746
Thailand	175	173	1	690
Vietnam	10	132	-92	581
Top 10 importers	3,981	3,837	4	15,091
Total U.S. wheat export sales	5,497	6,592	-17	20,967
% of YTD current month's export projection	26%	27%	-	-
Change from prior week	504	255	-	-
Top 10 importers' share of U.S. wheat export sales	72%	58%	-	72%
USDA forecast, June 2026	21,092	24,766	-15	-

Note: The top 10 importers are based on USDA, Foreign Agricultural Service (FAS) marketing year ranking reports for marketing year (MY) 2025/26 (June 1 – May 31). "Total commitments" = cumulative exports (shipped + outstanding sales (unshipped), from FAS weekly export sales report, or export sales query. Total commitments' change (net sales) from prior week could include revisions from previous week's outstanding sales or accumulated sales. In rightmost column, "Exports" = accumulated exports (as defined in FAS marketing year ranking reports). mt = metric ton; yr. = year; avg. = average; YTD = year to date; "-" = not applicable.

Source: USDA, Foreign Agricultural Service.





## COARSE GRAINS

### ➤ **Corn Export Shipments and Sales**

**Corn:** Net sales of 743,100 mts for 2025/2026 were down 36% from the previous week and 27% from the prior 4-week average. Increases primarily for Mexico (307,300 mts, including 29,000 mts switched from unknown destinations and decreases of 17,100 mts), Japan (161,700 mts, including 60,000 mts switched from unknown destinations and decreases of 73,900 mts), Colombia (98,400 mts, including 75,000 mts switched from unknown destinations and decreases of 14,700 mts), Spain (52,300 mts, including 53,000 mts switched from unknown destinations and decreases of 700 mts), and South Korea (28,700 mts), were offset by reductions for unknown destinations (34,400 mts). Net sales of 735,900 mts for 2026/2027 were primarily for Mexico (295,500 mts), Japan (250,000 mts), South Korea (74,000 mts), Panama (48,500 mts), and Honduras (32,500 mts).

Exports of 1,500,100 mts were down 17% from the previous week and 15% from the prior 4-week average. The destinations were primarily to Mexico (452,100 mts), Japan (323,200 mts), South Korea (289,000 mts), Colombia (128,300 mts), and Taiwan (77,200 mts).

Source: USDA FAS - <https://apps.fas.usda.gov/esrqs#/reports/weeklyexportsalesreportdetail>

### ➤ **Grain Sorghum Export Shipments and Sales**

**Sorghum:** Net sales of 36,200 mts for 2025/2026 were down 47% from the previous week and 53% from the prior 4-week average. Increases were reported for unknown destinations (30,000 mts), Mexico (3,900 mts), China (2,000 mts), and Japan (400 mts).

Exports of 6,200 mts were down 98% from the previous week and 95% from the prior 4-week average. The destinations were to Mexico (3,900 mts) and China (2,300 mts).

Source: USDA FAS - <https://apps.fas.usda.gov/esrqs#/reports/weeklyexportsalesreportdetail>

Table 15. Top 5 importers of U.S. corn

For the week ending 6/18/2026	Total commitments (1,000 mt)			% change current MY from last MY	Exports 3-year average 2022-24 (1,000 mt)
	YTD MY 2026/27	YTD MY 2025/26	YTD MY 2024/25		
Mexico	2,537	24,113	21,945	10	19,839
Japan	1,290	15,257	12,318	24	10,478
Colombia	118	7,953	7,060	13	5,493
China	0	0	33	-100	3,461
Korea	479	8,549	5,649	51	3,127
Top 5 importers	4,424	55,872	47,005	19	42,399
Total U.S. corn export sales	5,379	84,667	67,574	25	54,276
% of YTD current month's export projection	7%	100%	93%	-	-
Change from prior week	736	743	741	-	-
Top 5 importers' share of U.S. corn export sales	82%	66%	70%	-	78%
USDA forecast June 2026	80,014	84,459	72,597	16	-
Corn use for ethanol USDA forecast June 2026	142,240	141,605	138,075	3	-

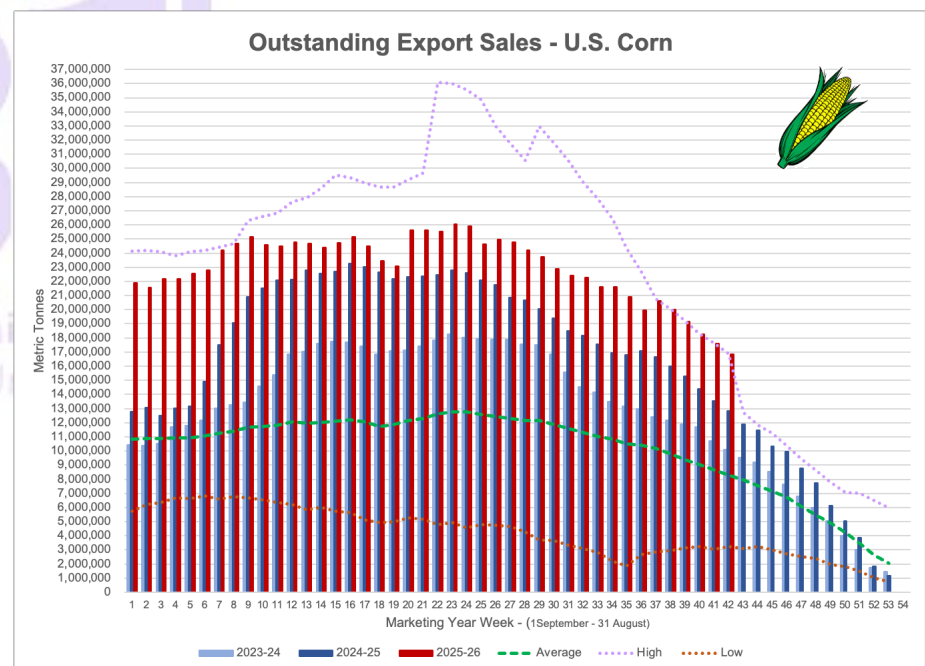
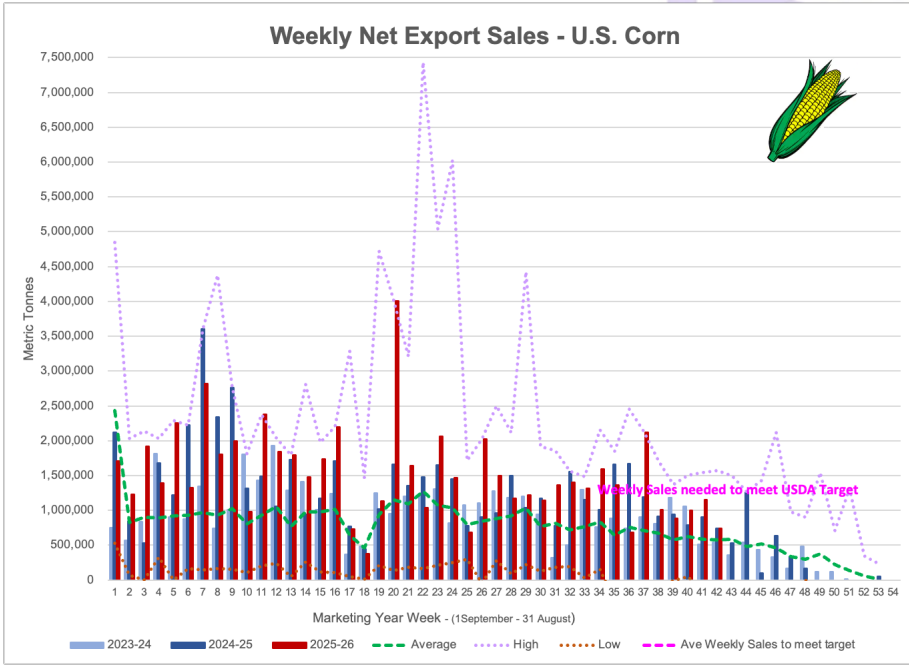
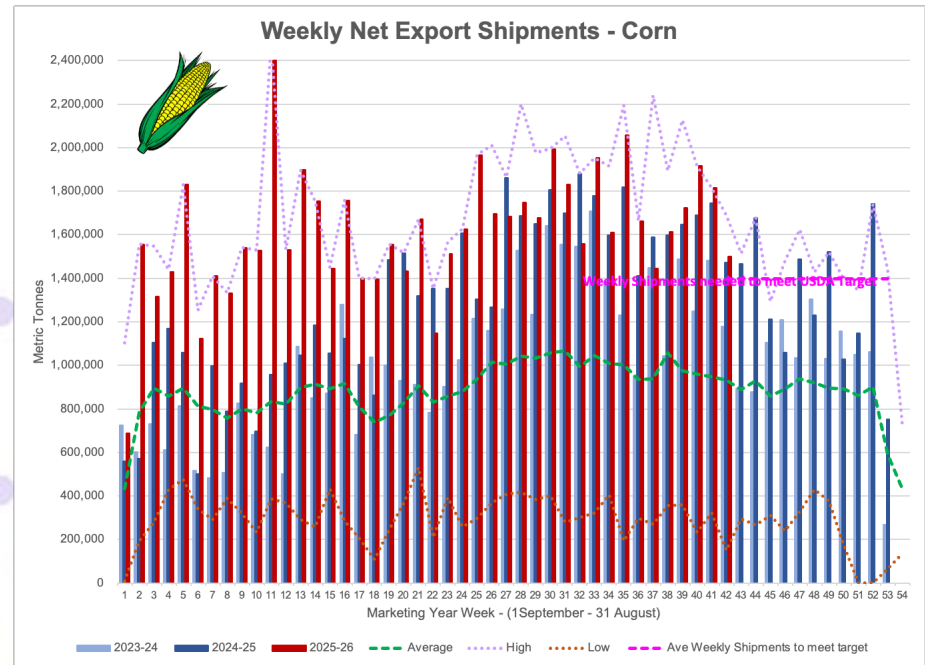
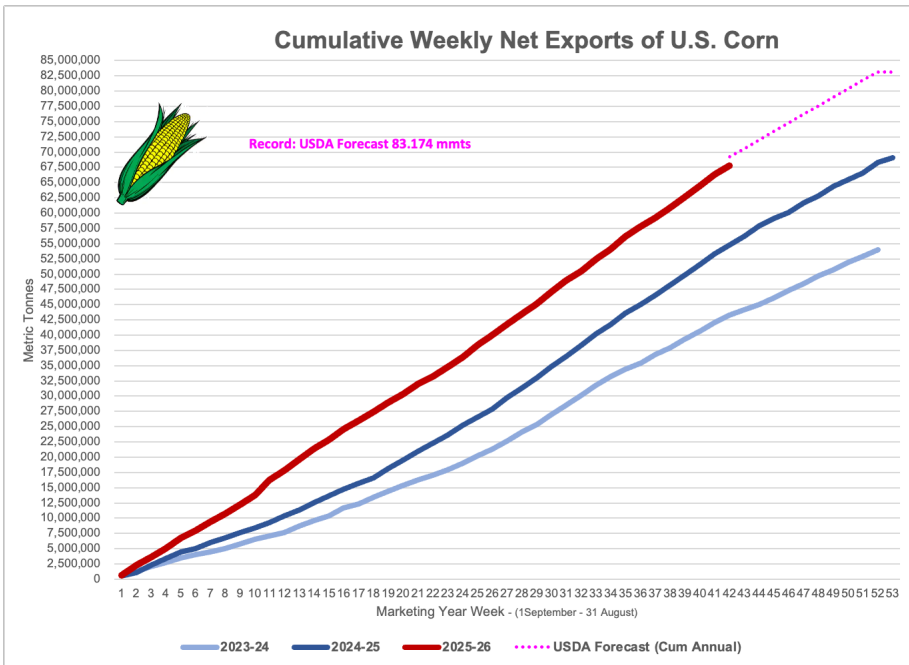
Note: The top 5 importers are based on USDA, Foreign Agricultural Service (FAS) marketing year ranking reports for marketing year (MY) 2024/25 (September 1 – August 31). "Total commitments" = cumulative exports (shipped) + outstanding sales (unshipped), from FAS weekly export sales report, or export sales query. Total commitments' change (net sales) from prior week could include revisions from previous week's outstanding sales or accumulated sales. In rightmost column, "Exports" = accumulated exports (as defined in FAS marketing year ranking reports). mt = metric ton; yr. = year; avg. = average; YTD = year to date; "-" = not applicable.

Source: USDA, Foreign Agricultural Service.

### ➤ **Barley Export Shipments and Sales**

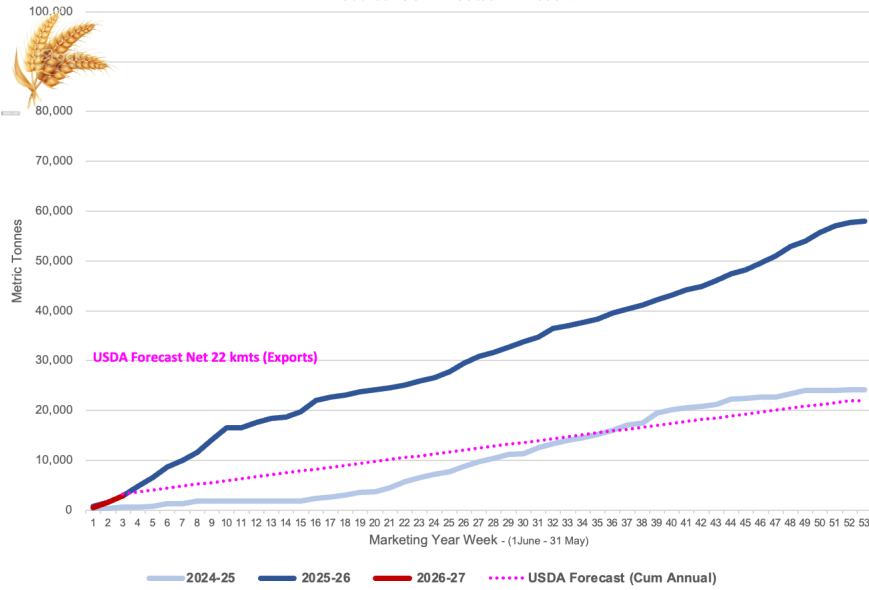
**Barley:** Total net sales of 1,000 mts for 2026/2027 were for Canada. Exports of 1,400 mts were to Canada (900 mts) and Japan (500 mts).

Source: USDA FAS - <https://apps.fas.usda.gov/esrqs#/reports/weeklyexportsalesreportdetail>



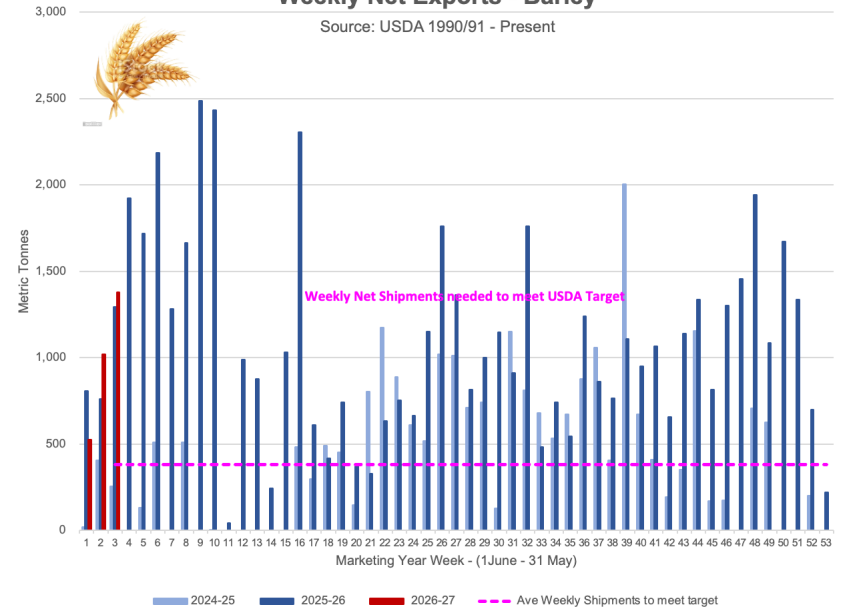
### Cumulative Weekly Net Exports of U.S. Barley

Source: USDA 1990/91 - Present



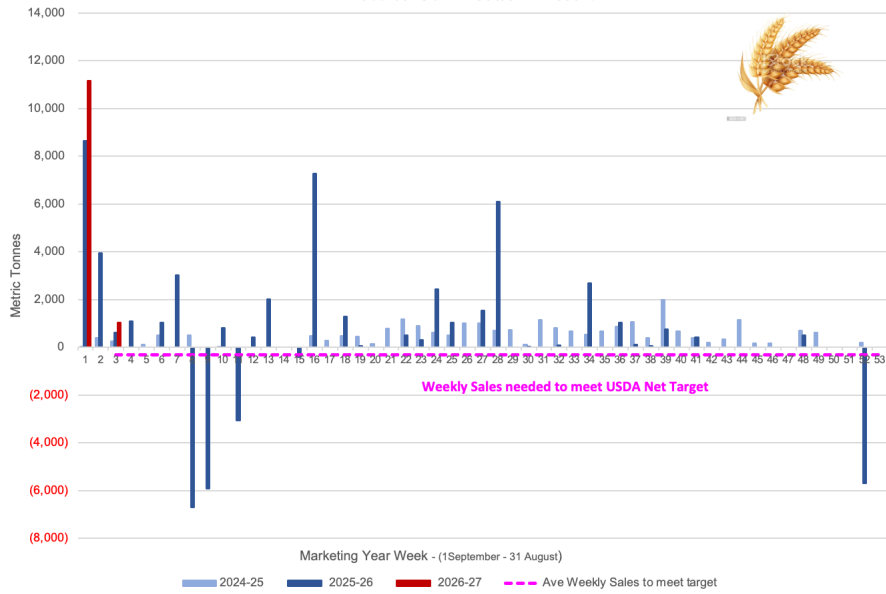
### Weekly Net Exports - Barley

Source: USDA 1990/91 - Present



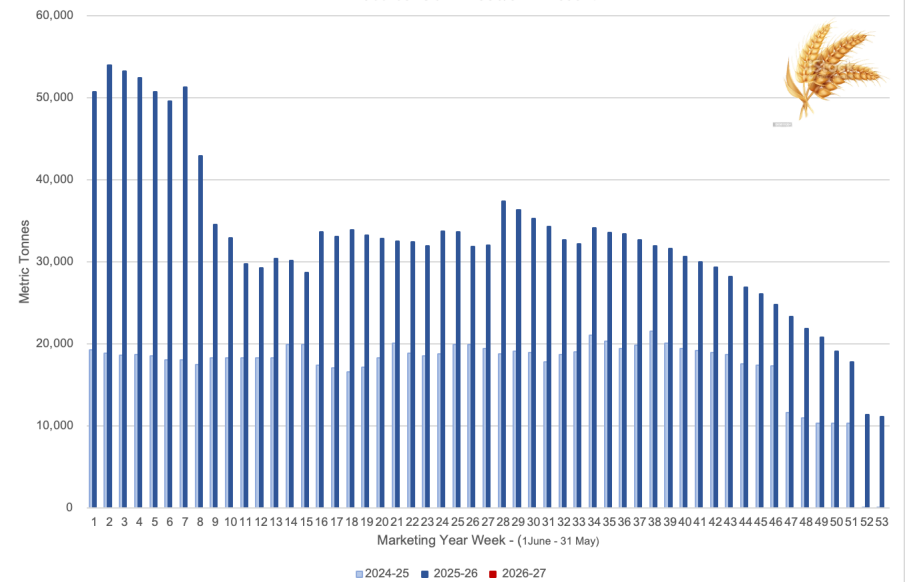
### Weekly Net Exports Sales - U.S. Barley

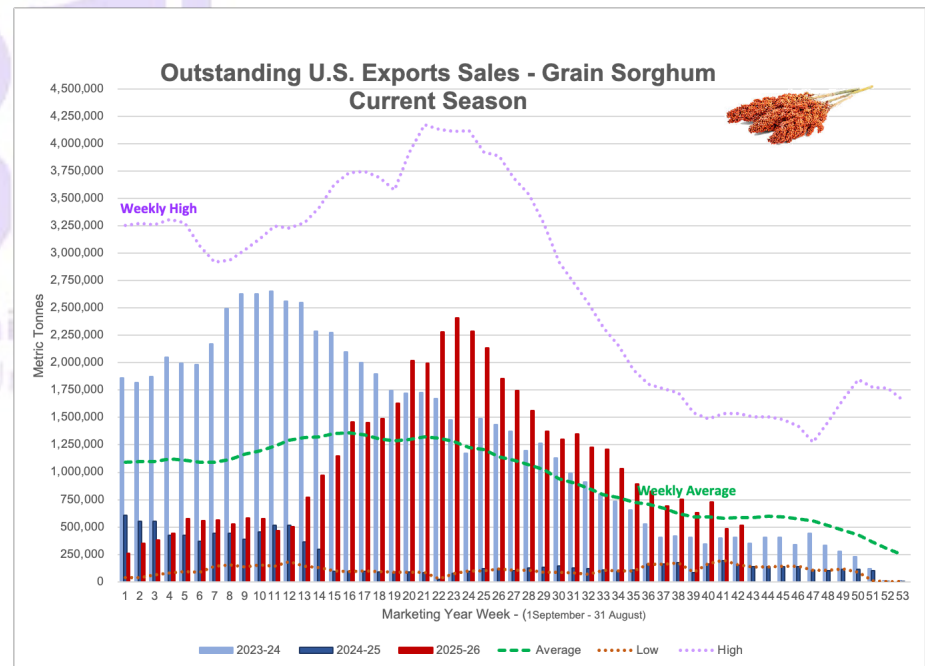
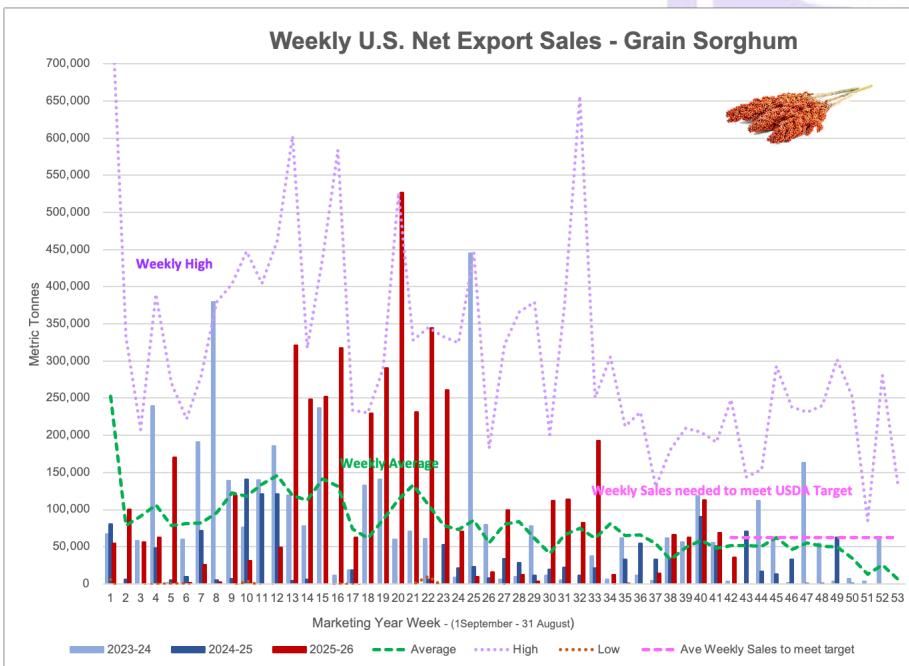
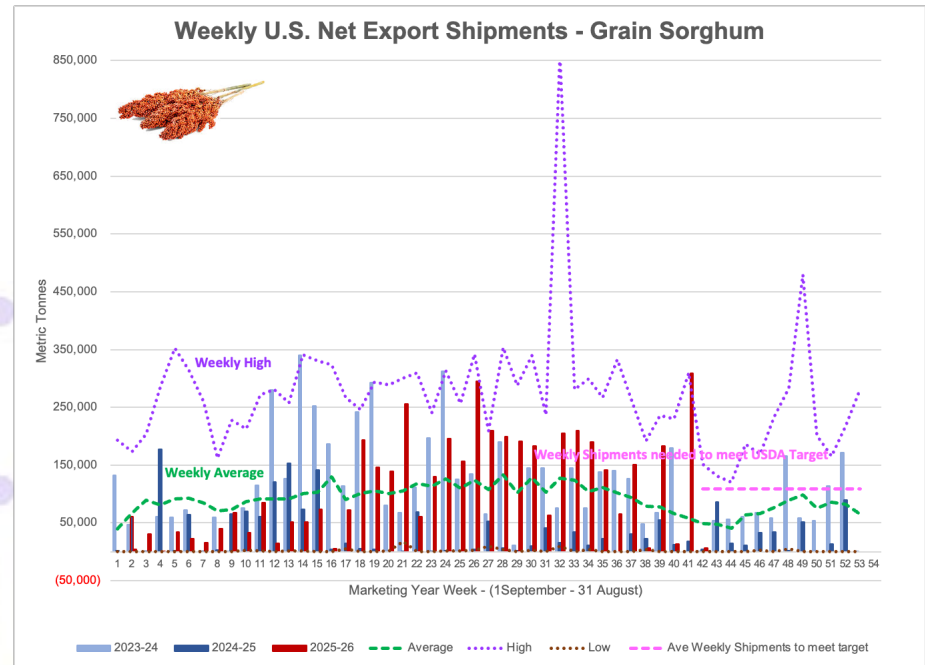
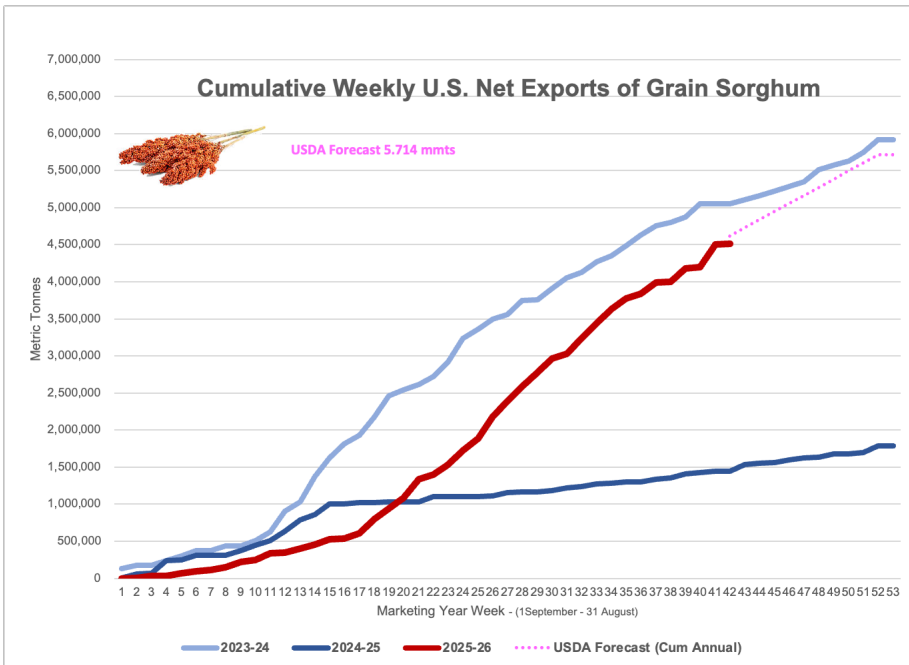
Source: USDA 1990/91 - Present



### Outstanding Net Exports Sales - U.S. Barley

Source: USDA 1990/91 - Present





## OILSEED COMPLEX

### ➤ **Soybean Export Shipments and Sales**

**Soybeans:** Net sales of 455,400 mts for 2025/2026 were up 7% from the previous week and 50% from the prior 4-week average. Increases primarily for unknown destinations (263,100 mts), Algeria (89,000 mts), Mexico (34,100 mts, including decreases of 1,200 mts), Colombia (22,800 mts, including 26,800 mts switched from unknown destinations and decreases of 5,000 mts), and Malaysia (14,200 mts), were offset by reductions for Thailand (100 mts). Net sales of 902,200 mts for 2026/2027 were reported for unknown destinations (529,000 mts), China (200,000 mts), Mexico (106,200 mts), Egypt (60,000 mts), and Indonesia (7,000 mts).

Exports of 217,000 mts--a marketing-year low--were down 61% from the previous week and 59% from the prior 4-week average. The destinations were primarily to Mexico (70,800 mts), China (69,500 mts), Colombia (29,800 mts), Indonesia (17,800 mts), and Taiwan (10,500 mts).

Exports for Own Account: For 2025/2026, the current exports for own account outstanding balance of 1,800 mts, all Taiwan.

Source: USDA FAS - <https://apps.fas.usda.gov/esrqs/#/reports/weeklyexportsalesreportdetail>

### ➤ **Soybean Meal Export Shipments and Sales**

**Soybean Cake and Meal:** Net sales of 153,100 mts for 2025/2026 were down 46% from the previous week and 47% from the prior 4-week average. Increases primarily for Colombia (31,000 mts, including decreases of 4,300 mts), Panama (30,500 mts), Saudi Arabia (30,000 mts), unknown destinations (25,000 mts), and Ecuador (7,200 mts, including decreases of 21,600 mts), were offset by reductions for El Salvador (5,400 mts), Mexico (4,300 mts), Belgium (1,800 mts), and Leeward and Windward Islands (100 mts). Net sales of 29,200 mts for 2026/2027 were reported for Honduras (13,900 mts), Mexico (6,700 mts), unknown destinations (5,500 mts), Canada (2,100 mts), and Sri Lanka (1,000 mts).

Exports of 279,300 mts were up 29% from the previous week, but down 7% from the prior 4-week average. The destinations were primarily to Ecuador (58,200 mts), the Philippines (51,100 mts), Colombia (45,100 mts), Mexico (38,600 mts), and the United Kingdom (27,500 mts).

Table 16. Top 5 importers of U.S. soybeans

For the week ending 6/18/2026	Total commitments (1,000 mt)			% change current MY from last MY	Exports 3-year average 2022-24 (1,000 mt)
	YTD MY 2026/27	YTD MY 2025/26	YTD MY 2024/25		
China	200	11,960	22,479	-47	26,078
Mexico	352	4,917	5,060	-3	4,762
Japan	74	2,135	1,943	10	2,107
Egypt	60	4,897	3,120	57	2,098
Indonesia	40	2,270	1,852	23	1,997
Top 5 importers	726	26,179	34,453	-24	37,042
Total U.S. soybean export sales	2,238	41,039	49,410	-17	48,941
% of YTD current month's export projection	5%	100%	96%	-	-
Change from prior week	902	455	340	-	-
Top 5 importers' share of U.S. soybean export sales	32%	64%	70%	-	76%
USDA forecast, June 2026	44,361	41,095	51,220	-20	-

Note: The top 5 importers are based on USDA, Foreign Agricultural Service (FAS) marketing year ranking reports for marketing year (MY) 2024/25 (September 1 - August 31). "Total commitments" = cumulative exports (shipped) + outstanding sales (unshipped), from FAS weekly export sales report, or export sales query. Total commitments' change (net sales) from prior week could include revisions from previous week's outstanding sales or accumulated sales. In rightmost column, "Exports" = accumulated exports (as defined in FAS marketing year ranking reports). mt = metric ton; yr. = year; avg. = average; YTD = year to date; "-" = not applicable. Source: USDA, Foreign Agricultural Service.

Optional Origin Sales: For 2025/2026, the current outstanding balance of 68,000 mts, all Ecuador. For 2026/2027, the current outstanding balance of 2,000 mts, all Ecuador.

Source: USDA FAS - <https://apps.fas.usda.gov/esrqs/#/reports/weeklyexportsalesreportdetail>

### ➤ **Soybean Oil Export Shipments and Sales**

**Soybean Oil:** Net sales of 900 mts for 2025/2026 were down 62% from the previous week and 47% from the prior 4-week average. Increases were reported for Mexico (700 mts) and Canada (100 mts).

Exports of 2,000 mts were up 15% from the previous week and 21% from the prior 4-week average. The destinations were to Mexico (1,500 mts) and Canada (400 mts).

Source: USDA FAS - <https://apps.fas.usda.gov/esrqs/#/reports/weeklyexportsalesreportdetail>

