



IGP Export Pace

Wheat, Corn, Grain Sorghum, and Soybean Complex

12th June 2026
 Department of Grain & Food Science,
 Kansas State University

by Guy H. Allen – Senior Economist, International Grains Program, Kansas State University

For timely market news and quotes see IGP Market Information Website:

<http://www.dtnigp.com/> Find me on Twitter [igpguy1 @igpguy1](#)

KSU Ag Manager Link: <https://www.agmanager.info/grain-marketing/publications/us-grain-exports-and-trade>

KSU Agriculture Today Podcast Link: <https://agtodayksu.libsyn.com/timeliness-of-corn-and-soybean-plantingworld-grain-supply-and-demand>

IGP Market Information: <http://www.dtnigp.com/index.cfm>

USDA Transportation Report: <https://www.ams.usda.gov/services/transportation-analysis/gtr>

USDA FAS Historical Grain Shipments: <https://apps.fas.usda.gov/export-sales/wkHistData.htm>, <https://apps.fas.usda.gov/export-sales/complete.htm>

Contents

U.S. EXPORT ACTIVITY	1
➤ Export Sales	1
➤ Vessel Loadings	1
2	
➤ Export Inspections	2
CEREAL GRAINS	5
➤ Wheat Export Shipments and Sales	5
➤ Rice Export Shipments and Sales	5
COARSE GRAINS	7
➤ Corn Export Shipments and Sales	7
➤ Grain Sorghum Export Shipments and Sales	7
➤ Barley Export Shipments and Sales	7
OILSEED COMPLEX	11
➤ Soybean Export Shipments and Sales	11
➤ Soybean Meal Export Shipments and Sales	11
➤ Soybean Oil Export Shipments and Sales	11

- This summary based on reports for the 12th of June 2026
- Outstanding Export Sales (Unshipped Balances) on the 04th of May 2026
- Export Shipments in Current Marketing Year

- Daily Sales Reported for the 11th of June 2026

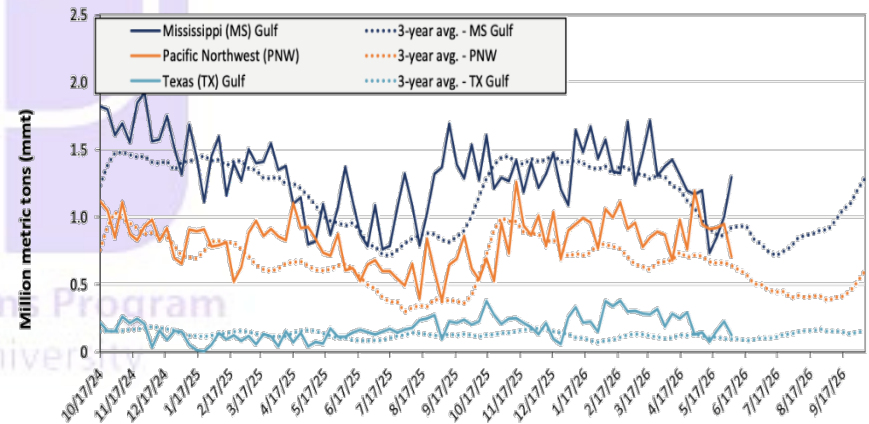
U.S. EXPORT ACTIVITY

➤ Export Sales

- Export Sales data for the week ending June 04, unshipped balances of corn, soybeans, and wheat for marketing year (MY) 2025/26 totaled 22.43 mmts, down 5% from last week and up 25% from the same time last year.
- Net corn export sales were 1.0 mmts, up 13% from last week.
- Net soybean export sales were .21 mmts, down 24% from last week.
- Net wheat export sales were 4.33 mmts, down 25% from last week.

➤ Vessel Loadings

Figure 18. U.S. grain inspections for U.S. Gulf and PNW (wheat, corn, and soybeans)



Ocean - For the week ending June 04, 36 oceangoing grain vessels were loaded in the Gulf—13% more than the same period last year. Within the next 10 days (starting June 05), 29 vessels were expected to be loaded – 34% fewer than the same period last year. As of June 04, the rate for shipping a metric ton (mt) of grain from the U.S. Gulf to Japan was \$71.75, down 1% from the previous week. The rate from the Pacific Northwest to Japan was \$37.25 per mt, unchanged from the previous week.

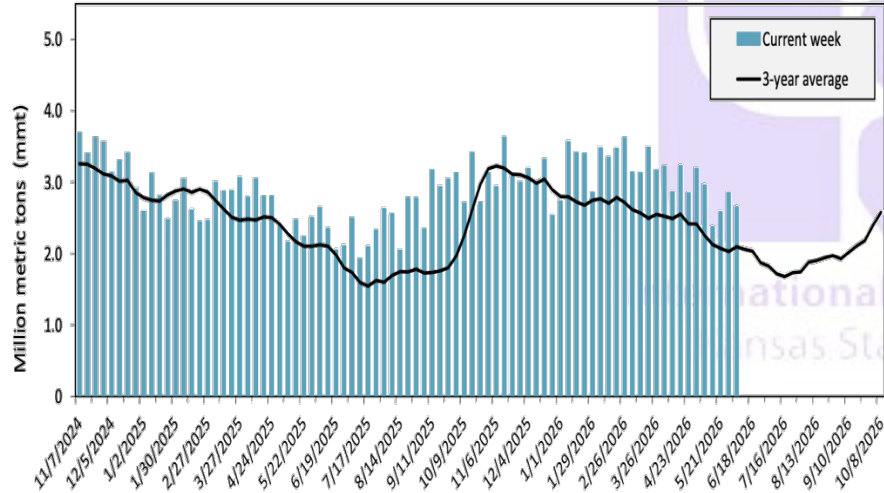
Table 14. U.S. export balances and cumulative exports (1,000 metric tons)

Grain Exports		Wheat						Corn	Soybeans	Total
		Hard red winter (HRW)	Soft red winter (SRW)	Hard red spring (HRS)	Soft white wheat (SWW)	Durum	All wheat			
Current unshipped (outstanding) export sales	For the week ending 06/04/2026	928	734	1,314	1,235	115	4,326	18,269	4,163	26,758
	This week year ago	2,313	1,072	1,495	829	85	5,794	14,388	3,593	23,775
	Last 4 wks. as % of same period in prior marketing year	28	29	43	62	50	37	136	126	110
Current shipped (cumulative) exports sales	Current MYTD	132	34	58	25	17	266	64,498	35,996	100,760
	Prior MYTD	12	21	63	19	0	116	51,541	44,996	96,653
	Current MYTD as % of prior MYTD	1,063	159	92	133	0	230	125	80	104
	Total 2024/25	5,377	3,106	6,560	5,730	335	21,107	69,081	50,106	140,295
	Total 2023/24	3,535	4,260	6,314	3,906	526	18,540	54,277	44,510	117,328

Note: The marketing year for wheat is June 1 to May 31 and, for corn and soybeans, September 1 to August 31. YTD = year-to-date. wks. = weeks. MYTD = marketing year to date. Source: USDA, Foreign Agricultural Service.

Export Inspections

Figure 17. U.S. grain inspected for export (wheat, corn, and soybeans)



**GRAINS INSPECTED AND/OR WEIGHED FOR EXPORT
REPORTED IN WEEK ENDING JUN 04, 2026
-- METRIC TONS --**

GRAIN	WEEK ENDING			CURRENT MARKET YEAR TO DATE	PREVIOUS MARKET YEAR TO DATE
	06/04/2026	05/28/2026	06/05/2025		
BARLEY	0	0	597	0	98
CORN	1,911,112	1,749,952	1,728,889	63,874,783	50,374,666
FLAXSEED	0	0	0	0	0
MIXED	0	0	0	0	122
OATS	0	0	0	0	0
RYE	0	0	0	0	0
SORGHUM	11,135	181,215	27,571	4,069,597	1,824,543
SOYBEANS	398,186	505,109	558,910	36,057,408	45,227,029
SUNFLOWER	0	0	0	40	0
WHEAT	319,730	402,959	324,207	216,195	201,334
Total	2,640,163	2,839,235	2,640,174	104,218,023	97,627,792

CROP MARKETING YEARS BEGIN JUNE 1 FOR WHEAT, RYE, OATS, BARLEY AND FLAXSEED; SEPTEMBER 1 FOR CORN, SORGHUM, SOYBEANS AND SUNFLOWER SEEDS. INCLUDES WATERWAY SHIPMENTS TO CANADA.

**SOYBEANS INSPECTED AND/OR WEIGHED FOR EXPORT
BY PORT AREA AND COUNTRY OF DESTINATION
REPORTED IN WEEK ENDING JUN 04, 2026
-- METRIC TONS --**

Source: https://www.ams.usda.gov/mnreports/wa_gr101.txt

Table 18. Grain inspections for export by U.S. port region (1,000 metric tons)

Port regions	Commodity	For the week ending 06/04/2026	Previous week	Current week as % of previous	2026 YTD	2025 YTD	2026 YTD as % of 2025 YTD	Last 4-weeks as % of:		2025 total
								Last year	Prior 3-yr. avg.	
Pacific Northwest	Corn	515	625	82	11,559	11,285	102	123	141	24,214
	Soybeans	68	77	88	4,027	1,966	205	n/a	n/a	2,957
	Wheat	121	246	49	4,391	4,903	90	67	75	12,271
	All grain	704	948	74	20,133	18,248	110	125	136	39,721
Mississippi Gulf	Corn	1,065	683	156	16,861	16,611	102	86	102	37,115
	Soybeans	162	282	57	11,334	9,985	114	116	126	23,350
	Wheat	70	37	187	1,353	1,501	90	70	82	3,980
	All grain	1,297	1,002	129	29,549	28,097	105	90	105	64,484
Texas Gulf	Corn	62	13	462	687	116	594	n/a	549	590
	Soybeans	0	0	n/a	100	106	94	n/a	n/a	1,431
	Wheat	62	34	184	1,676	1,535	109	59	103	4,690
	All grain	124	227	55	5,422	1,895	286	140	153	7,774
Interior	Corn	237	399	59	6,922	5,744	121	105	121	15,546
	Soybeans	114	144	79	3,170	2,932	108	117	142	7,713
	Wheat	44	85	51	1,357	1,316	103	110	122	3,104
	All grain	417	639	65	11,708	10,256	114	108	128	26,888
Great Lakes	Corn	0	0	n/a	218	0	n/a	n/a	548	414
	Soybeans	0	0	n/a	20	0	n/a	n/a	0	63
	Wheat	23	0	n/a	135	104	130	156	118	434
	All grain	23	0	n/a	373	104	359	350	192	911
Atlantic	Corn	32	30	107	765	161	475	736	n/a	607
	Soybeans	2	3	72	545	450	121	472	320	1,085
	Wheat	0	0	n/a	6	34	18	0	0	81
	All grain	34	33	104	1,316	645	204	525	573	1,773
All Regions	Corn	1,911	1,750	109	37,012	33,916	109	105	122	78,486
	Soybeans	398	505	79	19,654	15,543	126	169	188	36,852
	Wheat	320	403	79	8,919	9,393	95	73	87	24,560
	All grain	2,652	2,848	93	68,959	59,349	116	109	125	141,804

Note: Data include revisions from prior weeks; "All grain" includes corn, soybeans, wheat, sorghum, oats, barley, rye, sunflower, flaxseed, and mixed grains; "All regions" includes listed regions and other minor regions not listed; YTD = year-to-date; n/a = not available or no change. A "-" in the table indicates a percentage change with a near-zero denominator for the period.

Source: USDA, Federal Grain Inspection Service.

BARGE MOVEMENTS

Figure 12. Barge movements on the Mississippi River (Locks 27-Granite City, IL)

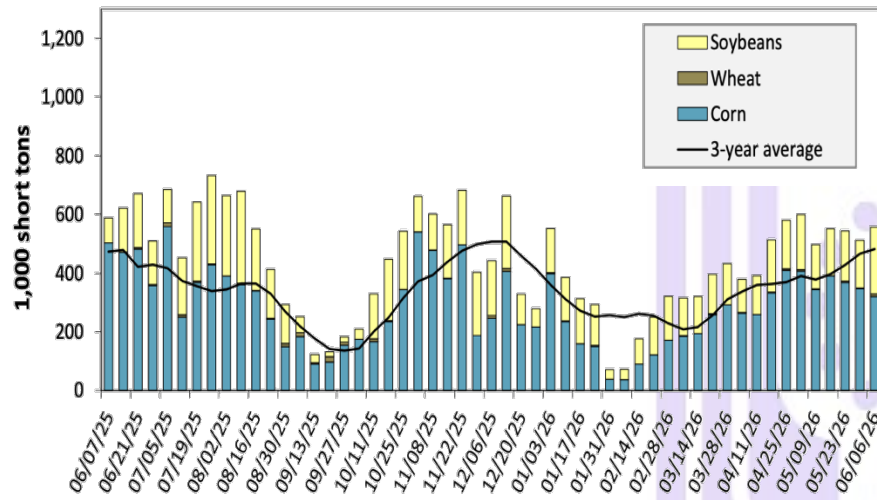
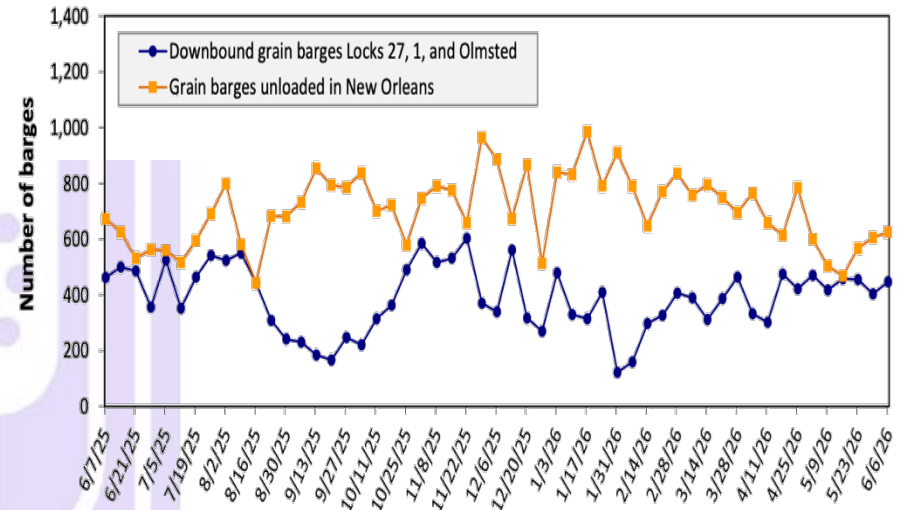


Figure 14. Grain barges for export in New Orleans region



Barge – For the week ending June 06th, barged grain movements totaled 667,860 tons. This was 10% less than the previous week and 8% less than the same week last year. For the week ending June 06, 446 barges moved down river, 42 more than the previous week. There were 624 grain barges unloaded in the New Orleans Region, 3% more than the previous week.

Table 10. Barged grain movements (1,000 tons)

For the week ending 06/06/2026	Corn	Wheat	Soybeans	Other	Total
Mississippi River (Rock Island, IL (L15))	166	9	78	0	253
Mississippi River (Winfield, MO (L25))	206	9	147	0	361
Mississippi River (Alton, IL (L26))	313	9	221	0	544
Mississippi River (Granite City, IL (L27))	320	9	228	0	557
Illinois River (La Grange)	105	0	63	0	168
Ohio River (Olmsted)	49	0	45	0	94
Arkansas River (L1)	1	9	7	0	17
Weekly total - 2026	370	18	280	0	668
Weekly total - 2025	583	36	106	2	726
2026 YTD	7,258	386	4,716	45	12,405
2025 YTD	9,032	463	4,656	99	14,250
2026 as % of 2025 YTD	80	83	101	45	87
Last 4 weeks as % of 2025	67	77	160	102	85
Total 2025	20,015	1,259	11,322	166	32,761

Note: "Other" refers to oats, barley, sorghum, and rye. Total may not add up due to rounding. YTD = year to date. Weekly total, YTD, and calendar year total include Mississippi River lock 27, Ohio River Olmsted lock, and Arkansas Lock 1. "L" (as in "L15") refers to a lock, locks, or lock and dam facility.
Source: U.S. Army Corps of Engineers.

CEREAL GRAINS

➤ Wheat Export Shipments and Sales

Wheat: Net sales of 666,300 (mt) for the 2026/2027 marketing year, which began June 1st, primarily for Mexico (143,100 mt, including decreases of 38,000 mt), Taiwan (118,500 mt), the Philippines (116,900 mt), Japan (71,000 mt), and Indonesia (65,100 mt, including decreases of 5,900 mt), were offset by reductions for El Salvador (12,000 mt), Venezuela (11,800 mt), and Burma (6,300 mt). A total of 298,600 mt in sales were carried over from the 2025/2026 marketing year, which ended May 31. Exports for the period ending May 31, of 145,600 mt brought accumulated exports to 23,408,000 mt, up 11% from the prior year's total of 21,107,400 mt. The destinations were primarily to Mexico (71,600 mt), South Korea (19,700 mt), Venezuela (17,000 mt), Trinidad and Tobago (10,300 mt), and Burma (8,300 mt). Exports for June 1st – 5th of 266,100 mt were primarily to Mexico (67,400 mt), Indonesia (44,100 mt), the Philippines (35,900 mt), Venezuela (30,700 mt), and Italy (23,000 mt).

Optional Origin Sales: For 2026/2027, the optional origin sales of 30,000 mt are for Mexico, which ended May 31. The current optional origin of 30,000 mt for June 1 is for Mexico.

Source: USDA FAS - <https://apps.fas.usda.gov/esrqs/#/reports/weeklyexportsalesreportdetail>

➤ Rice Export Shipments and Sales

Rice: Net sales of 39,000 mt for 2025/2026 were up noticeably from the previous week and up 84% from the prior 4-week average. Increases primarily for Haiti (22,300 mt, including decreases of 100 mt), Saudi Arabia (9,100 mt), Canada (2,600 mt), Austria (2,300 mt), and Germany (1,700 mt), were offset by reductions for Nicaragua (200 mt). Total net sales of 6,000 mt for 2026/2027 were for unknown destinations.

Table 17. Top 10 importers of all U.S. wheat

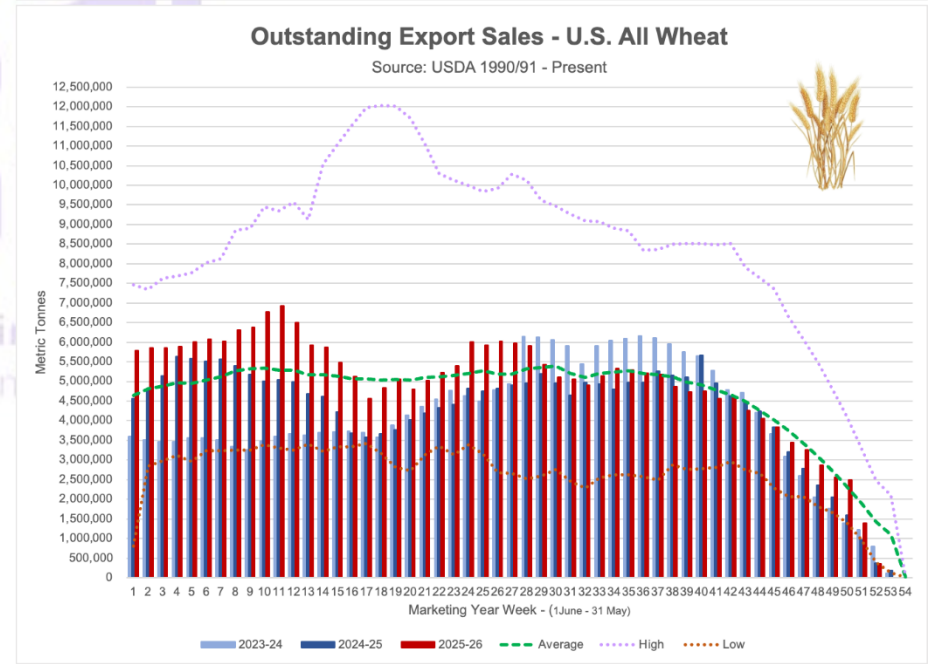
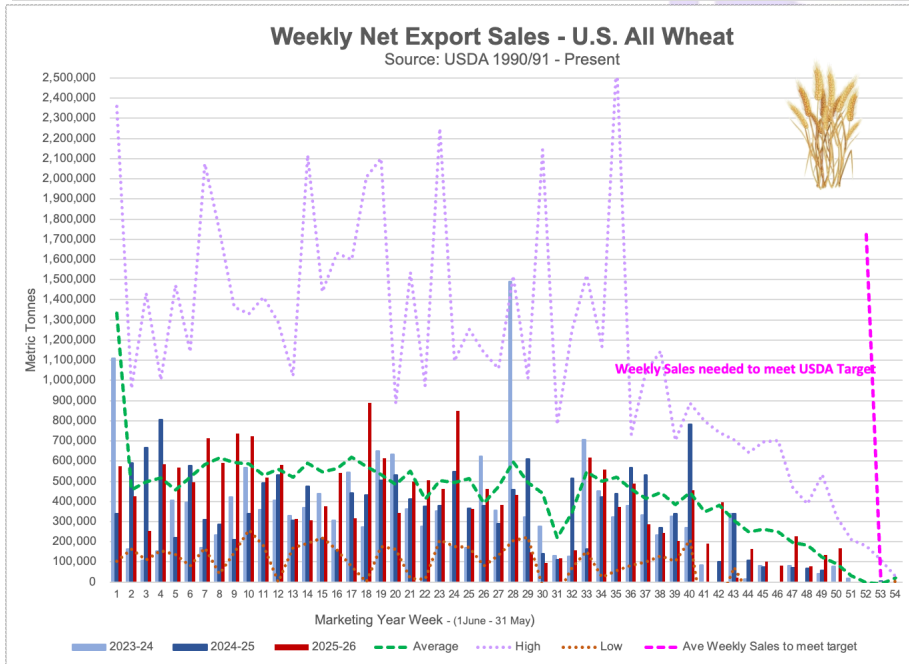
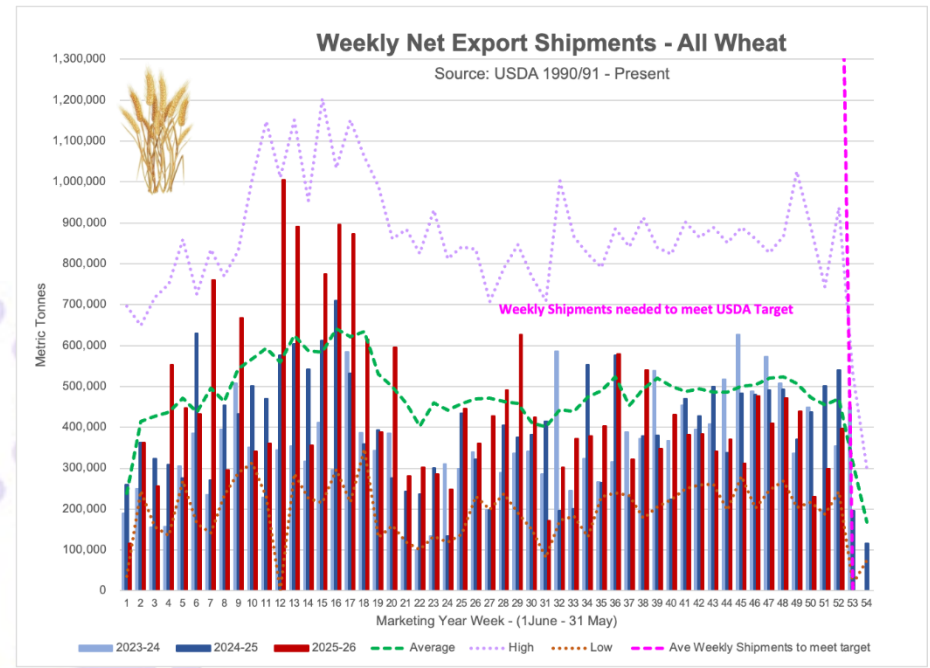
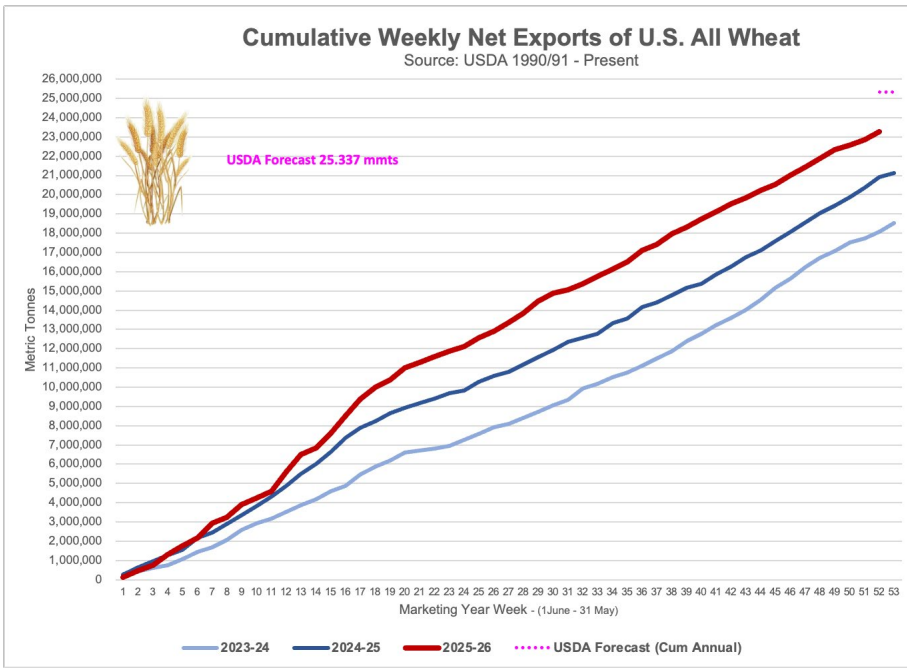
For the week ending 6/04/2026	Total commitments (1,000 mt)		% change current MY from last MY	Exports 3-year average 2023-25 (1,000 mt)
	YTD MY 2026/27	YTD MY 2025/26		
Mexico	885	1,128	-22	3,720
Philippines	753	505	49	2,677
Japan	496	483	3	2,050
Korea	586	308	90	1,881
Taiwan	276	203	36	1,005
Nigeria	52	235	-78	878
China	NA	NA	NA	863
Indonesia	65	214	-70	746
Thailand	119	116	2	690
Vietnam	10	95	-89	581
Top 10 importers	3,241	3,287	-1	15,091
Total U.S. wheat export sales	4,592	5,910	-22	20,967
% of YTD current month's export projection	22%	24%	-	-
Change from prior week	666	389	-	-
Top 10 importers' share of U.S. wheat export sales	71%	56%	-	72%
USDA forecast, May 2026	21,092	24,766	-15	-

Note: The top 10 importers are based on USDA, Foreign Agricultural Service (FAS) marketing year ranking reports for marketing year (MY) 2025/26 (June 1 – May 31). "Total commitments" = cumulative exports (shipped) + outstanding sales (unshipped), from FAS weekly export sales report, or export sales query. Total commitments' change (net sales) from prior week could include revisions from previous week's outstanding sales or accumulated sales. In rightmost column, "Exports" = accumulated exports (as defined in FAS marketing year ranking reports). mt = metric ton; yr. = year; avg. = average; YTD = year to date; "-" = not applicable.

Source: USDA, Foreign Agricultural Service.

Exports of 63,900 mt were up noticeably from the previous week and up 46% from the prior 4-week average. The destinations were primarily to Haiti (29,300 mt), Japan (13,700 mt), Saudi Arabia (9,900 mt), Nicaragua (4,800 mt), and South Korea (2,200 mt).

Source: USDA FAS - <https://apps.fas.usda.gov/esrqs/#/reports/weeklyexportsalesreportdetail>



COARSE GRAINS

➤ Corn Export Shipments and Sales

Corn: Net sales of 1,000,400 mt for 2025/2026 were up 13% from the previous week, but down 15% from the prior 4-week average. Increases primarily for Japan (373,100 mt, including 96,900 mt switched from unknown destinations and decreases of 9,300 mt), Mexico (356,200 mt, including 87,000 mt switched from unknown destinations), Spain (237,200 mt, including 128,000 mt switched from unknown destinations and decreases of 8,700 mt), Colombia (219,100 mt, including 40,000 mt switched from unknown destinations and decreases of 6,100 mt), and Honduras (74,400 mt), were offset by reductions primarily for unknown destinations (443,300 mt), Costa Rica (31,100 mt), Nicaragua (3,800 mt), Morocco (600 mt), and Leeward and Winward Islands (600 mt). Net sales of 926,900 mt for 2026/2027 were primarily for Japan (241,000 mt), Colombia (237,500 mt), South Korea (204,000 mt), Mexico (80,000 mt), and unknown destinations (65,200 mt).

Exports of 1,916,200 mt were up 11% from the previous week and 19% from the prior 4-week average. The destinations were primarily to Mexico (565,100 mt), Spain (247,200 mt), South Korea (205,200 mt), Japan (164,600 mt), and Colombia (142,500 mt).

➤ Grain Sorghum Export Shipments and Sales

Sorghum: Net sales of 113,000 mt for 2025/2026 were up 80% from the previous week and up noticeably from the prior 4-week average. Increases reported for unknown destinations (109,000 mt, including decreases of 3,000 mt) and China (4,700 mt, including decreases of 300 mt), were offset by reductions for Mexico (700 mt).

Exports of 13,400 mt were down 93% from the previous week and 87% from the prior 4-week average. The destinations were to Mexico (10,500 mt) and China (2,900 mt).

Source: USDA FAS - <https://apps.fas.usda.gov/esrqs/#/reports/weeklyexportsalesreportdetail>

Table 15. Top 5 importers of U.S. corn

For the week ending 6/04/2026	Total commitments (1,000 mt)			% change current MY from last MY	Exports 3-year average 2022-24 (1,000 mt)
	YTD MY 2026/27	YTD MY 2025/26	YTD MY 2024/25		
Mexico	2,099	23,546	21,631	9	19,839
Japan	829	14,849	11,773	26	10,478
Colombia	281	7,686	6,863	12	5,493
China	0	0	33	-100	3,461
Korea	204	8,583	5,455	57	3,127
Top 5 importers	3,413	54,664	45,755	19	42,399
Total U.S. corn export sales	4,124	82,767	65,929	26	54,276
% of YTD current month's export projection	5%	99%	91%	-	-
Change from prior week	927	1,000	791	-	-
Top 5 importers' share of U.S. corn export sales	83%	66%	69%	-	78%
USDA forecast May 2026	80,014	83,824	72,597	15	-
Corn use for ethanol USDA forecast May 2026	142,240	142,240	138,075	3	-

Note: The top 5 importers are based on USDA, Foreign Agricultural Service (FAS) marketing year ranking reports for marketing year (MY) 2024/25 (September 1 – August 31). "Total commitments" = cumulative exports (shipped) + outstanding sales (unshipped), from FAS weekly export sales report, or export sales query. Total commitments' change (net sales) from prior week could include revisions from previous week's outstanding sales or accumulated sales. In rightmost column, "Exports" = accumulated exports (as defined in FAS marketing year ranking reports). mt = metric ton; yr. = year; avg. = average; YTD = year to date; "-" = not applicable.

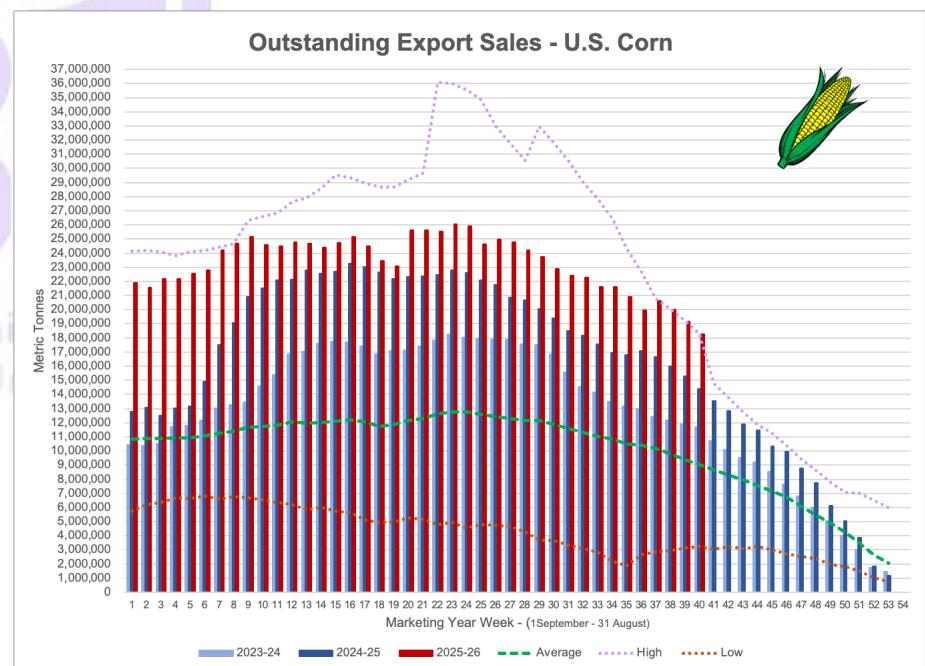
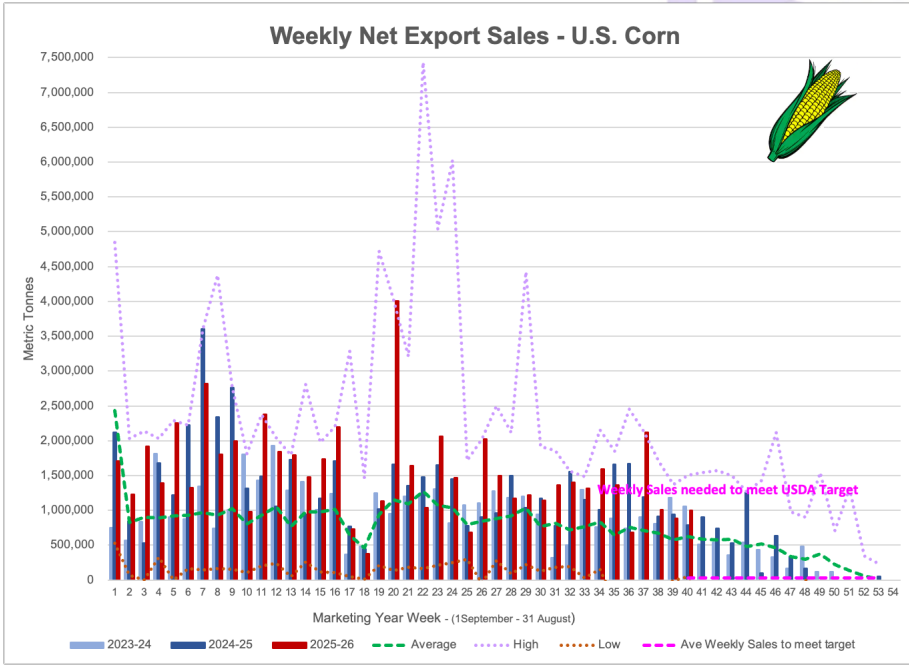
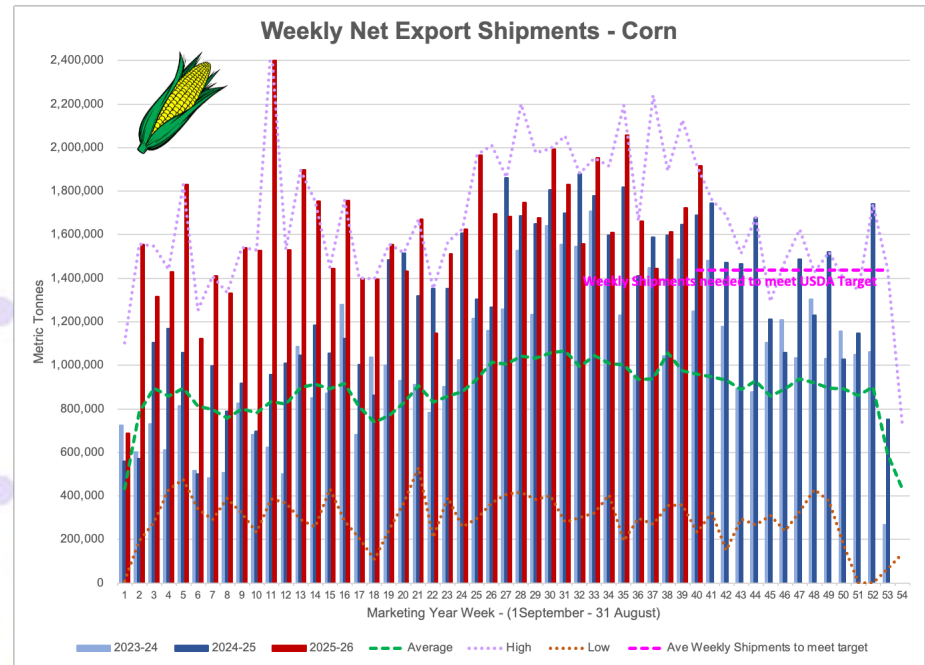
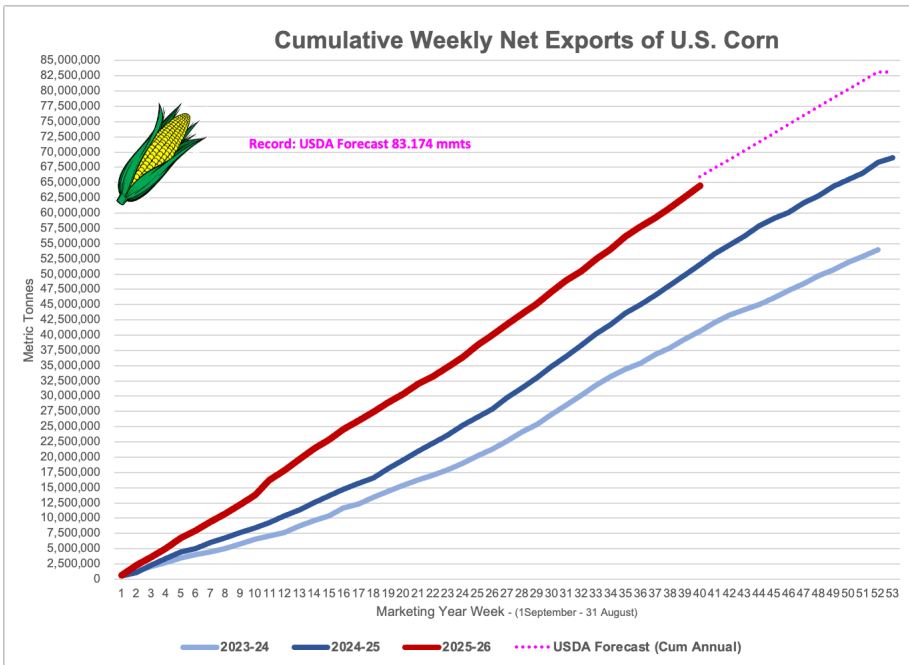
Source: USDA, Foreign Agricultural Service.

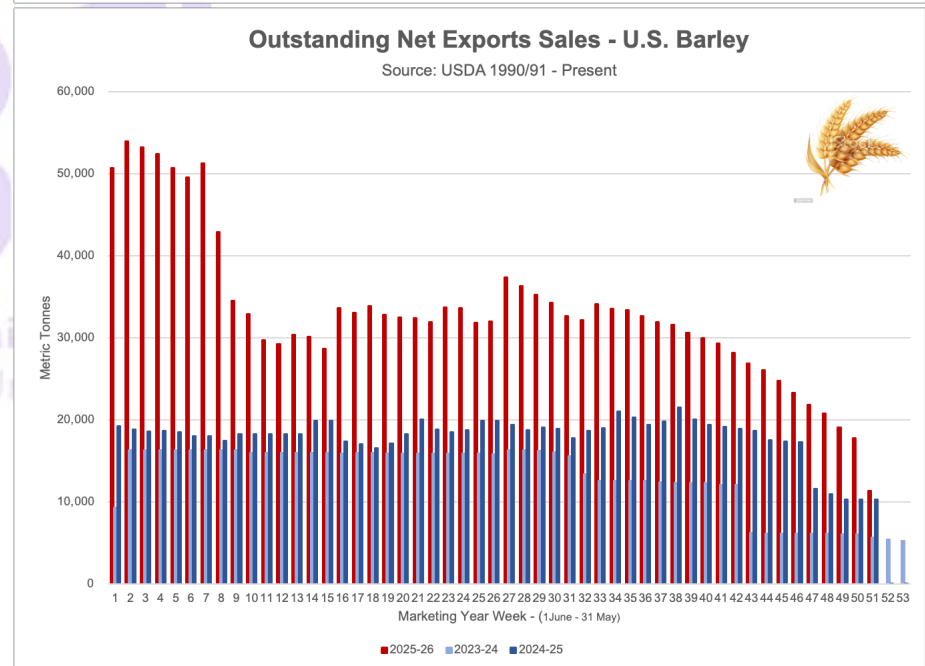
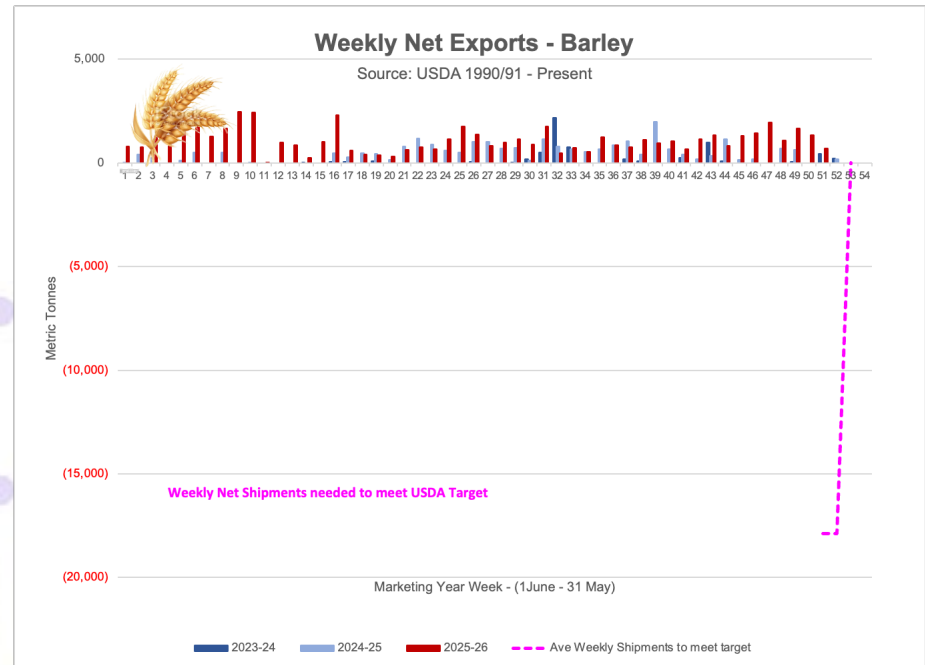
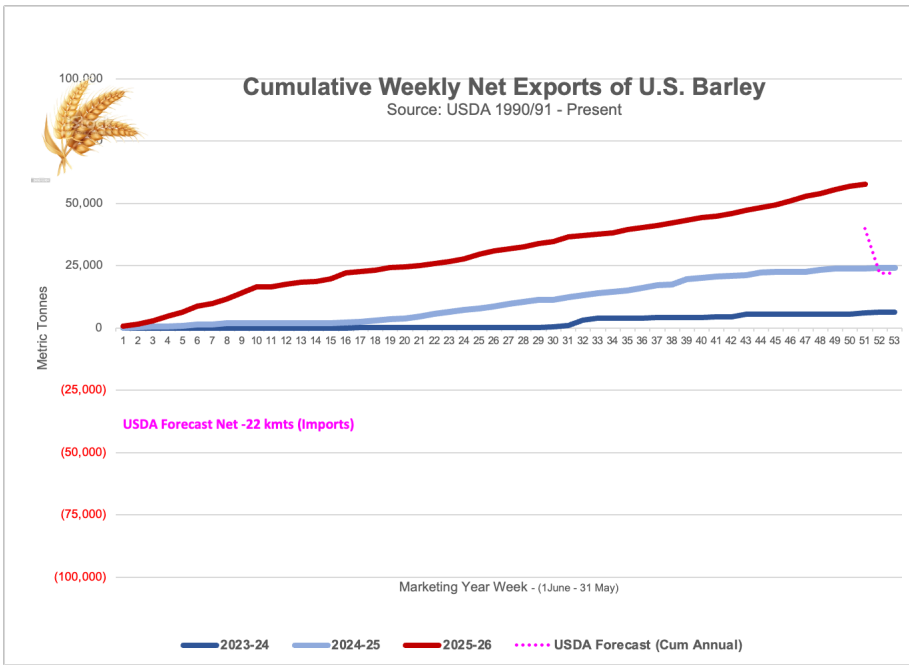
➤ Barley Export Shipments and Sales

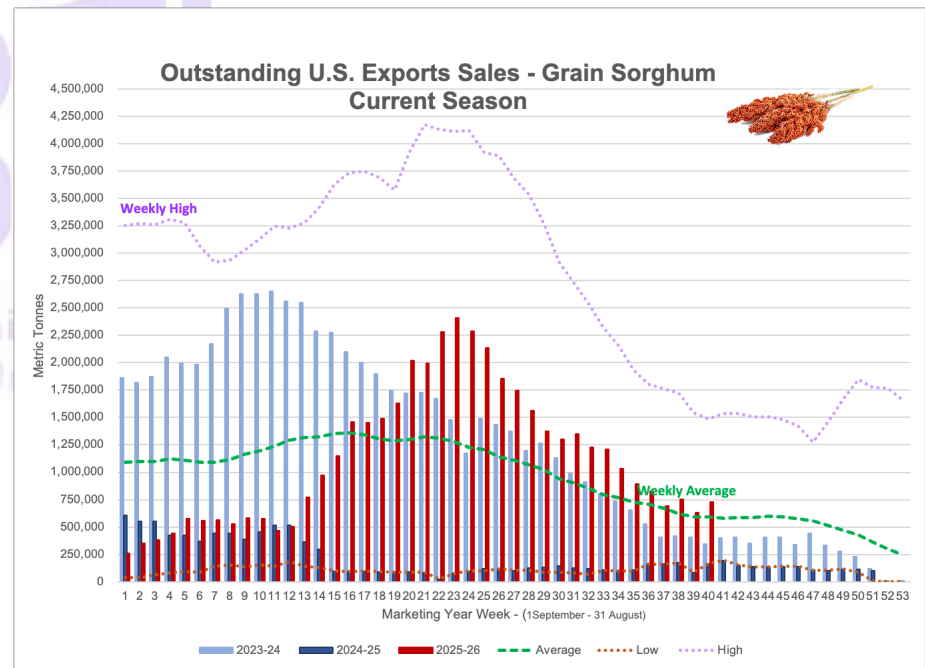
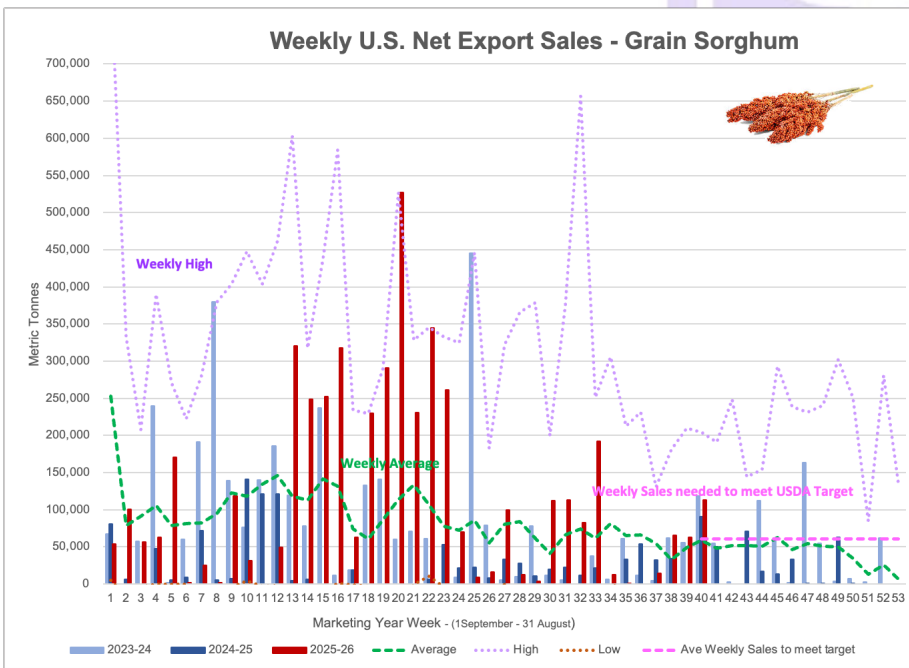
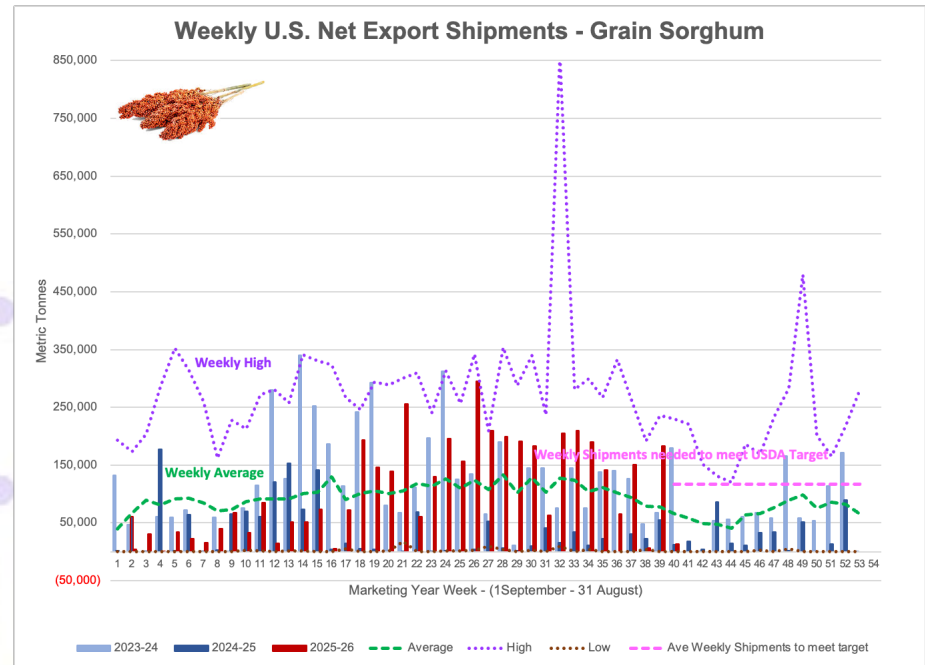
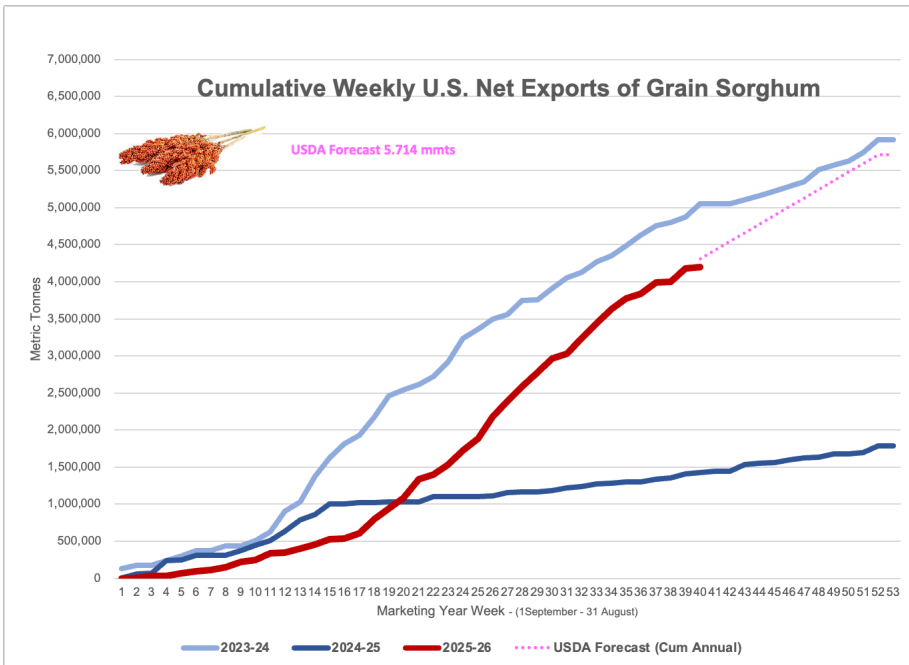
Barley: Net sales of 11,200 mt for the 2026/2027 marketing year, which began June 1, were reported for Canada (7,700 mt) and South Korea (3,500 mt). A total of 11,200 mt in sales were carried over from the 2025/2026 marketing year, which ended May 31. Accumulated exports were 58,000 mt, up noticeably from the prior year's total of 24,200 mt.

Exports for the period ending May 31, of 200 mt were to Canada. Exports for June 1-4 were to Canada (500 mt).

International Grains Program
Kansas State University







OILSEED COMPLEX

➤ Soybean Export Shipments and Sales

Soybeans: Net sales of 211,300 mt for 2025/2026 were down 24% from the previous week and 18% from the prior 4-week average. Increases primarily for Egypt (67,600 mt), Japan (56,400 mt, including 57,700 mt switched from unknown destinations and decreases of 1,500 mt), Taiwan (15,200 mt), Mexico (13,600 mt, including decreases of 1,400 mt), and Canada (12,700 mt), were offset by reductions for unknown destinations (4,000 mt) and Barbados (500 mt). Net sales of 141,500 mt for 2026/2027 were reported for unknown destinations (120,000 mt), Malaysia (10,000 mt), Indonesia (8,000 mt), and Taiwan (3,500 mt).

Exports of 411,500 mt were down 28% from the previous week and 30% from the prior 4-week average. The destinations were primarily to Egypt (118,600 mt), Japan (85,100 mt), Mexico (82,400 mt), China (68,100 mt), and Indonesia (25,600 mt).

Exports for Own Account: For 2025/2026, the current exports for own account outstanding balance of 1,800 mt, all Taiwan.

➤ Soybean Meal Export Shipments and Sales

Soybean Cake and Meal: Net sales of 395,700 mt for 2025/2026 were up noticeably from the previous week and up 23% from the prior 4-week average. Increases primarily for the Philippines (200,500 mt, including decreases of 200 mt), Vietnam (89,600 mt, including 48,000 mt switched from unknown destinations), Mexico (50,100 mt, including decreases of 100 mt), Ecuador (43,000 mt), and Burma (15,000 mt), were offset by reductions primarily for unknown destinations (30,300 mt), Costa Rica (11,500 mt), El Salvador (9,600 mt), Nicaragua (4,400 mt), and Japan (500 mt). Net sales of 30,400 mt for 2026/2027 were reported for Vietnam (30,000 mt) and Canada (400 mt). Exports of 318,000 mt were up 18% from the previous week and 2% from the prior 4-week average. The destinations were primarily to the Philippines (122,400 mt), Mexico (76,500 mt), Honduras (30,500 mt), the Dominican Republic (27,800 mt), and Canada (12,100 mt).

Optional Origin Sales: For 2025/2026, the current outstanding balance of 62,100 mt, all Ecuador. For 2026/2027, the current outstanding balance of 2,000 mt, all Ecuador.

Table 16. Top 5 importers of U.S. soybeans

For the week ending 6/04/2026	Total commitments (1,000 mt)			% change current MY from last MY	Exports 3-year average 2022-24 (1,000 mt)
	YTD MY 2026/27	YTD MY 2025/26	YTD MY 2024/25		
China	0	11,956	22,479	-47	26,078
Mexico	222	4,828	4,898	-1	4,762
Japan	75	2,081	1,907	9	2,107
Egypt	0	4,720	3,028	56	2,098
Indonesia	24	2,201	1,775	24	1,997
Top 5 importers	321	25,785	34,087	-24	37,042
Total U.S. soybean export sales	1,032	40,159	48,590	-17	48,941
% of YTD current month's export projection	2%	96%	95%	-	-
Change from prior week	142	211	61	-	-
Top 5 importers' share of U.S. soybean export sales	31%	64%	70%	-	76%
USDA forecast, May 2026	44,361	41,640	51,220	-19	-

Note: The top 5 importers are based on USDA, Foreign Agricultural Service (FAS) marketing year ranking reports for marketing year (MY) 2024/25 (September 1 - August 31). "Total commitments" = cumulative exports (shipped) + outstanding sales (unshipped), from FAS weekly export sales report, or export sales query. Total commitments' change (net sales) from prior week could include revisions from previous week's outstanding sales or accumulated sales. In rightmost column, "Exports" = accumulated exports (as defined in FAS marketing year ranking reports). mt = metric ton; yr. = year; avg. = average; YTD = year to date; "-" = not applicable. Source: USDA, Foreign Agricultural Service.

➤ Soybean Oil Export Shipments and Sales

Soybean Oil: Net sales of 800 mt for 2025/2026 were up noticeably from the previous week, but down 15% from the prior 4-week average. Increases were reported for Mexico (700 mt) and Canada (100 mt). Exports of 1,700 mt were up noticeably from the previous week and up 27% from the prior 4-week average. The destinations were to Mexico (1,400 mt) and Canada (300 mt).

Source: USDA FAS - <https://apps.fas.usda.gov/esrqs/#/reports/weeklyexportsalesreportdetail>

