



IGP Export Pace

Wheat, Corn, Grain Sorghum, and Soybean Complex

05th June 2026
Department of Grain & Food Science,
Kansas State University

by Guy H. Allen – Senior Economist, International Grains Program, Kansas State University

For timely market news and quotes see IGP Market Information Website:

<http://www.dtnigp.com/>

Find me on Twitter [igpguy1 @igpguy1](#)

KSU Ag Manager Link: <https://www.agmanager.info/grain-marketing/publications/us-grain-exports-and-trade>

KSU Agriculture Today Podcast Link: <https://agtodayksu.libsyn.com/timeliness-of-corn-and-soybean-plantingworld-grain-supply-and-demand>

IGP Market Information: <http://www.dtnigp.com/index.cfm>

USDA Transportation Report: <https://www.ams.usda.gov/services/transportation-analysis/gtr>

USDA FAS Historical Grain Shipments: <https://apps.fas.usda.gov/export-sales/wkHistData.htm>, <https://apps.fas.usda.gov/export-sales/complete.htm>

Contents

U.S. EXPORT ACTIVITY	1
➤ Export Sales	1
➤ Vessel Loadings	1
➤ Export Inspections	2
CEREAL GRAINS	5
➤ Wheat Export Shipments and Sales	5
➤ Rice Export Shipments and Sales	5
COARSE GRAINS	7
OILSEED COMPLEX	11
➤ Soybean Export Shipments and Sales	11
➤ Soybean Oil Export Shipments and Sales	11

- This summary based on reports for the 05th of June 2026
- Outstanding Export Sales (Unshipped Balances) on the 28th of May 2026
- Export Shipments in Current Marketing Year
- Daily Sales Reported for the 4th of June 2026

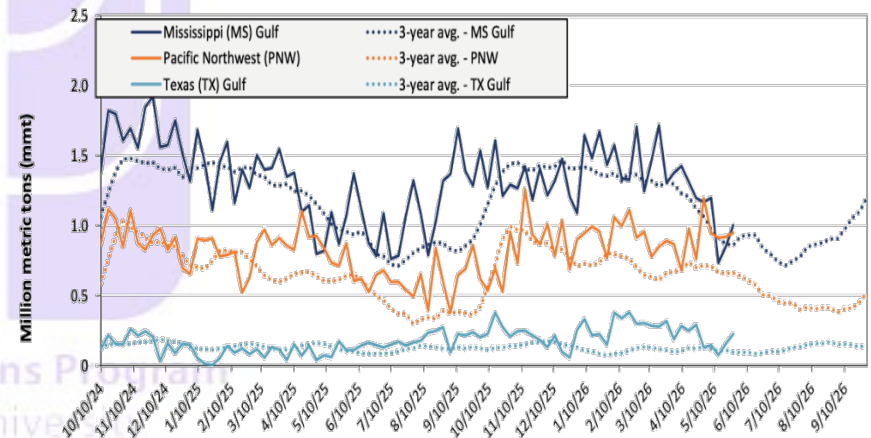
U.S. EXPORT ACTIVITY

➤ Export Sales

- Export Sales data for the week ending May 28, unshipped balances of corn, soybeans, and wheat for marketing year (MY) 2025/26 totaled 23.90 mmts, down 8% from last week and up 22% from the same time last year.
- Net corn export sales were .88 mmts, down 13% from last week.
- Net soybean export sales were .28 mmts, down 8% from last week.
- Net wheat export sales were -.64 mmts, up 20% from last week.

➤ Vessel Loadings

Figure 18. U.S. grain inspections for U.S. Gulf and PNW (wheat, corn, and soybeans)



Ocean - For the week ending May 28th, 21 oceangoing grain vessels were loaded in the Gulf—13% fewer than the same period last year. Within the next 10 days (starting May 29), 40 vessels were expected to be loaded – 7% fewer than the same period last year.

As of May 28th, the rate for shipping a metric ton (mt) of grain from the U.S. Gulf to Japan was \$72.25, up 2% from the previous week. The rate from the Pacific Northwest to Japan was \$37.25 per mt, unchanged from the previous week.

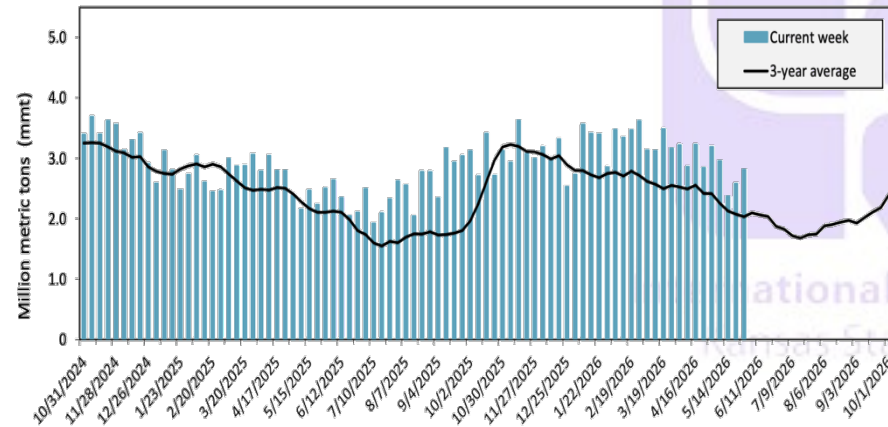
Table 14. U.S. export balances and cumulative exports (1,000 metric tons)

Grain Exports		Wheat						Corn	Soybeans	Total
		Hard red winter (HRW)	Soft red winter (SRW)	Hard red spring (HRS)	Soft white wheat (SWW)	Durum	All wheat			
Current unshipped (outstanding) export sales	For the week ending 05/28/2026	198	79	30	41	0	349	19,184	4,364	23,897
	This week year ago	185	51	93	31	18	377	15,288	3,985	19,650
	Last 4 wks. as % of same period 2024/25	338	18	548	1,117	146	450	130	120	134
Current shipped (cumulative) exports sales	2025/26 YTD	8,218	3,161	6,006	5,194	617	23,262	62,582	35,584	121,429
	2024/25 YTD	5,271	3,076	6,512	5,706	335	20,900	49,850	44,543	115,293
	YTD 2025/26 as % of 2024/25	156	103	92	91	184	111	126	80	105
	Total 2024/25	5,377	3,106	6,560	5,730	335	21,107	69,081	50,106	140,295
	Total 2023/24	3,535	4,260	6,314	3,906	526	18,540	54,277	44,510	117,328

Note: The marketing year for wheat is June 1 to May 31 and, for corn and soybeans, September 1 to August 31. YTD = year-to-date; wks. = weeks.
Source: USDA, Foreign Agricultural Service.

Export Inspections

Figure 17. U.S. grain inspected for export (wheat, corn, and soybeans)



*CORRECTIONS AT GRAINS INSPECTED AND/OR WEIGHED FOR EXPORT REPORTED IN WEEK ENDING MAY 28, 2026
-- METRIC TONS --

GRAIN	WEEK ENDING			CURRENT MARKET YEAR TO DATE	PREVIOUS MARKET YEAR TO DATE
	05/28/2026	05/21/2026	05/29/2025		
BARLEY	0	0	0	7,145	10,307
CORN	1,728,120	1,604,224	1,641,722	61,941,839	48,645,777
FLAXSEED	0	0	0	824	480
MIXED	0	0	0	0	122
OATS	0	0	0	5,785	946
RYE	0	0	0	0	0
SORGHUM	181,215	3,109	9,118	4,058,462	1,796,972
SOYBEANS	494,286	588,897	301,459	35,647,542	44,668,119
SUNFLOWER	0	0	0	40	0
WHEAT	402,346	379,771	553,409	23,893,498	21,866,454
Total	2,805,967	2,576,001	2,505,708	125,555,135	116,989,177

CROP MARKETING YEARS BEGIN JUNE 1 FOR WHEAT, RYE, OATS, BARLEY AND FLAXSEED; SEPTEMBER 1 FOR CORN, SORGHUM, SOYBEANS AND SUNFLOWER SEEDS. INCLUDES WATERWAY SHIPMENTS TO CANADA.

SOYBEANS INSPECTED AND/OR WEIGHED FOR EXPORT BY PORT AREA AND COUNTRY OF DESTINATION REPORTED IN WEEK ENDING MAY 28, 2026
-- METRIC TONS --

Table 18. Grain inspections for export by U.S. port region (1,000 metric tons)

Port regions	Commodity	For the week ending 05/28/2026	Previous week*	Current week as % of previous	2026 YTD*	2025 YTD*	2026 YTD as % of 2025 YTD	Last 4-weeks as % of:		2025 total*
								Last year	Prior 3-yr. avg.	
Pacific Northwest	Corn	625	649	96	11,044	10,882	101	108	130	24,214
	Soybeans	77	119	65	3,959	1,966	201	n/a	n/a	2,957
	Wheat	246	152	162	4,270	4,732	90	75	96	12,271
	All grain	948	920	103	19,429	17,674	110	119	140	39,721
Mississippi Gulf	Corn	683	553	124	15,797	15,720	100	91	102	37,115
	Soybeans	282	250	113	11,173	9,579	117	169	168	23,350
	Wheat	37	48	78	1,283	1,451	88	69	63	3,980
	All grain	1,002	851	118	28,252	26,750	106	102	110	64,484
Texas Gulf	Corn	13	57	23	625	116	540	656	330	590
	Soybeans	0	0	n/a	100	106	94	n/a	n/a	1,431
	Wheat	34	99	34	1,614	1,485	109	69	115	4,690
	All grain	227	156	145	5,298	1,832	289	151	156	7,774
Interior	Corn	377	293	129	6,663	5,465	122	118	136	15,546
	Soybeans	133	164	81	3,044	2,796	109	126	152	7,712
	Wheat	85	80	105	1,312	1,239	106	131	151	3,104
	All grain	605	545	111	11,256	9,749	115	120	143	26,887
Great Lakes	Corn	0	21	0	218	0	n/a	n/a	n/a	414
	Soybeans	0	0	n/a	20	0	n/a	n/a	239	63
	Wheat	0	0	n/a	112	93	121	214	141	434
	All grain	0	21	0	350	93	376	728	341	911
Atlantic	Corn	30	30	98	733	154	477	498	802	607
	Soybeans	3	57	5	543	444	122	n/a	637	1,085
	Wheat	0	0	n/a	6	34	18	0	0	81
	All grain	33	87	37	1,282	632	203	567	640	1,773
All Regions	Corn	1,728	1,604	108	35,079	32,336	108	106	121	78,486
	Soybeans	494	589	84	19,244	14,994	128	216	229	36,851
	Wheat	402	380	106	8,598	9,034	95	81	101	24,560
	All grain	2,815	2,580	109	66,273	56,833	117	117	132	141,803

*Note: Data include revisions from prior weeks; "All grain" includes corn, soybeans, wheat, sorghum, oats, barley, rye, sunflower, flaxseed, and mixed grains; "All regions" includes listed regions and other minor regions not listed; YTD = year-to-date; n/a = not available or no change. A "-" in the table indicates a percentage change with a near-zero denominator for the period.

Source: USDA, Federal Grain Inspection Service.

Source: https://www.ams.usda.gov/mnreports/wa_gr1U1.txt

BARGE MOVEMENTS

Figure 12. Barge movements on the Mississippi River (Locks 27-Granite City, IL)

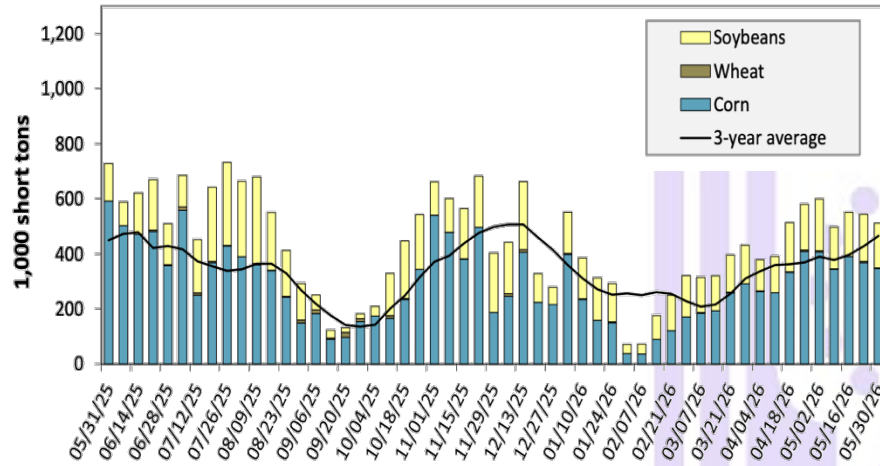
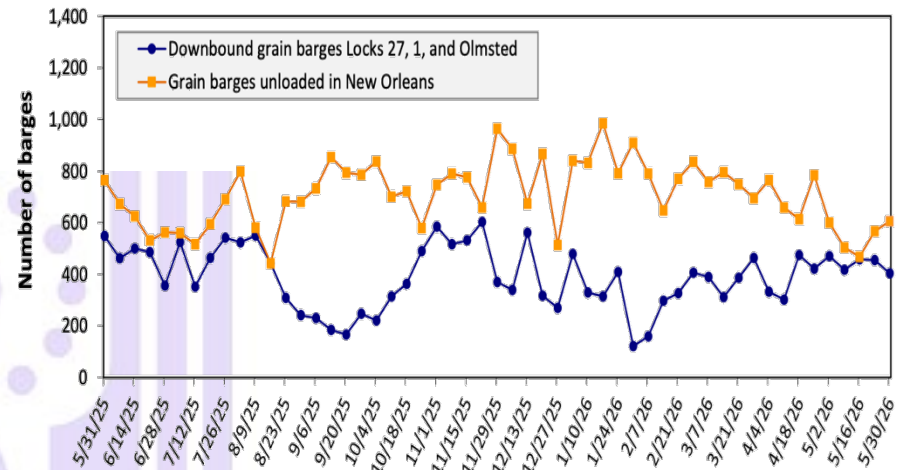


Figure 14. Grain barges for export in New Orleans region



Barge – For the week ending May 30th, barged grain movements totaled 608,450 tons. This was 14% less than the previous week and 29% less than the same week last year. For the week ending May 30th, 404 barges moved down river, 51 fewer than the previous week. There were 605 grain barges unloaded in the New Orleans Region, 7% more than the previous week.

Table 10. Barged grain movements (1,000 tons)

For the week ending 05/30/2026	Corn	Wheat	Soybeans	Other	Total
Mississippi River (Rock Island, IL (L15))	175	3	88	0	267
Mississippi River (Winfield, MO (L25))	226	0	98	0	324
Mississippi River (Alton, IL (L26))	292	2	142	0	436
Mississippi River (Granite City, IL (L27))	347	2	163	0	512
Illinois River (La Grange)	74	0	33	0	107
Ohio River (Olmsted)	35	4	22	0	60
Arkansas River (L1)	0	21	15	0	36
Weekly total - 2026	382	26	200	0	608
Weekly total - 2025	680	2	174	3	859
2026 YTD	6,888	369	4,436	45	11,737
2025 YTD	8,449	427	4,551	97	13,524
2026 as % of 2025 YTD	82	86	97	46	87
Last 4 weeks as % of 2025	71	87	126	111	83
Total 2025	20,015	1,259	11,322	166	32,761

Note: "Other" refers to oats, barley, sorghum, and rye. Total may not add up due to rounding. YTD = year to date. Weekly total, YTD, and calendar year total include Mississippi River lock 27, Ohio River Olmsted lock, and Arkansas Lock 1. "L" (as in "L15") refers to a lock, locks, or lock and dam facility.
Source: U.S. Army Corps of Engineers.

CEREAL GRAINS

➤ Wheat Export Shipments and Sales

Wheat: Net sales reductions of 642,200 metric tons (mts) for 2025/2026 reported for Thailand (46,400 mts, including decreases of 10,100 mts) and Suriname (4,100 mts switched from unknown destinations), were more than offset by reductions primarily for the Philippines (224,100 mts), unknown destinations (155,200 mts), Japan (104,900 mts), Mexico (72,200 mts), and Venezuela (33,000 mts). Net sales of 838,500 mts for 2026/2027 primarily for South Korea (202,100 mts), the Philippines (156,000 mts), unknown destinations (154,300 mts), Mexico (105,300 mts), and Japan (103,600 mts), were offset by reductions for Thailand (46,000 mts). Exports of 397,200 mts were up 33% from the previous week and 10% from the prior 4 -week average. The destinations were primarily to the Philippines (102,000 mts), South Korea (66,000 mts), Mexico (62,900 mts), Thailand (55,400 mts), and Taiwan (42,900 mts).

Optional Origin Sales: For 2025/2026, the current outstanding balance of 30,000 mts, all Mexico.

Source: USDA FAS - <https://apps.fas.usda.gov/esrqs/#/reports/weeklyexportsalesreportdetail>

➤ Rice Export Shipments and Sales

Rice: Net sales of 15,000 mts for 2025/2026 were up 72% from the previous week, but down 20% from the prior 4-week average. Increases were primarily for Japan (12,100 mts), Mexico (1,400 mts, including decrease of 200 mts), Canada (1,000 mts), Belgium (200 mts), and Taiwan (100 mts). Net sales of 28,700 mts for 2026/2027 were reported for South Korea (16,700 mts) and Japan (12,000 mts). Exports of 30,900 mts were down 21% from the previous week and 39% from the prior 4-week average. The

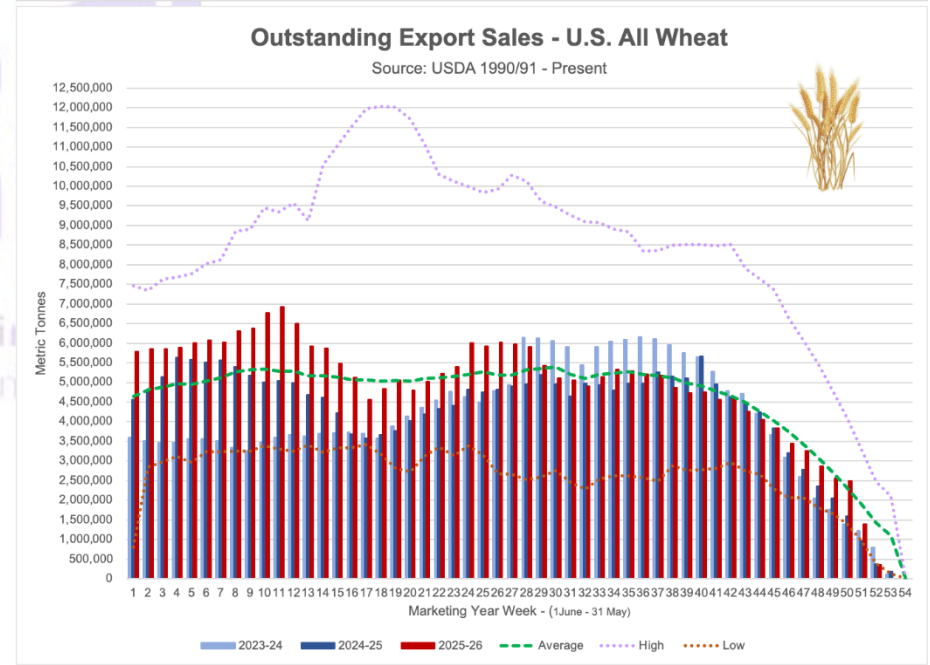
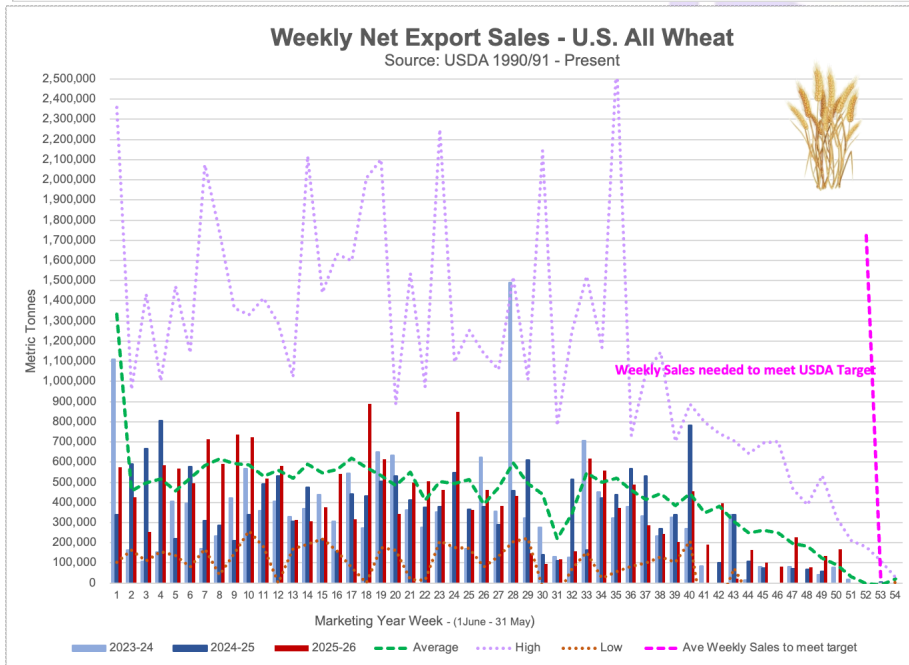
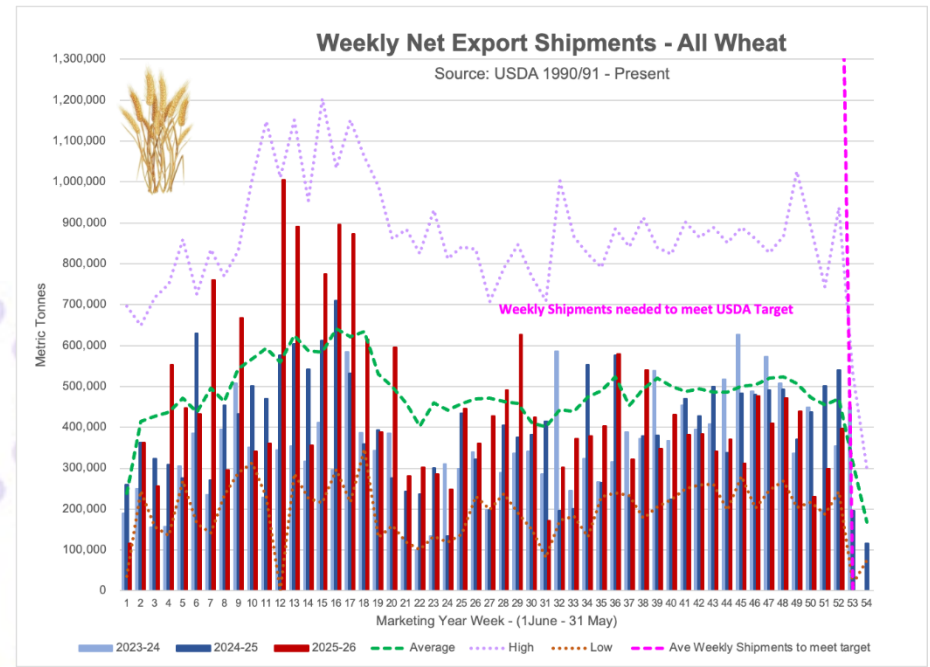
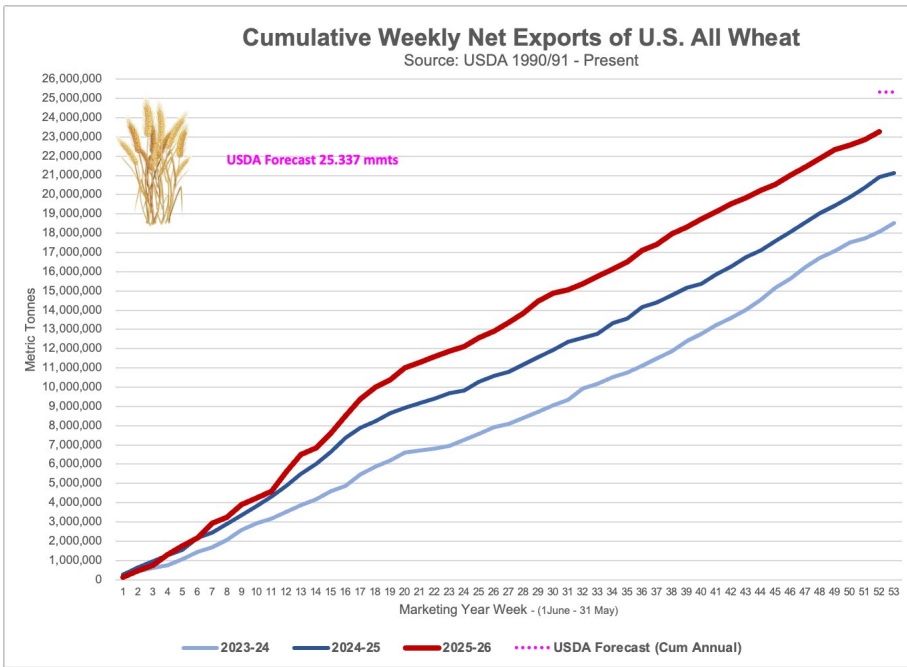
Table 17. Top 10 importers of all U.S. wheat

For the week ending 5/28/2026	Total commitments (1,000 mt)			% change current MY from last MY	Exports 3-year average 2022-24 (1,000 mt)
	YTD MY 2026/27	YTD MY 2025/26	YTD MY 2024/25		
Mexico	742	4,440	3,832	16	3,358
Philippines	636	2,646	2,576	3	2,473
Japan	425	2,072	2,115	-2	2,045
China	0	336	139	142	1,137
Korea	527	1,889	2,423	-22	1,674
Taiwan	157	970	983	-1	935
Thailand	118	712	897	-21	667
Nigeria	39	1,566	801	95	629
Indonesia	0	1,091	781	40	518
Colombia	80	746	568	31	489
Top 10 importers	2724	16,469	15,115	9	13,926
Total U.S. wheat export sales	3,926	23,611	21,277	11	19,135
% of YTD current month's export projection	19%	95%	95%	-	-
Change from prior week	839	-642	-49	-	-
Top 10 importers' share of U.S. wheat export sales	69%	70%	71%	-	73%
USDA forecast, May 2026	21,092	24,766	22,480	10	-

Note: The top 10 importers are based on USDA, Foreign Agricultural Service (FAS) marketing year ranking reports for marketing year (MY) 2024/25 (June 1 – May 31). "Total commitments" = cumulative exports (shipped) + outstanding sales (unshipped), from FAS weekly export sales report, or export sales query. Total commitments' change (net sales) from prior week could include revisions from previous week's outstanding sales or accumulated sales. In rightmost column, "Exports" = accumulated exports (as defined in FAS marketing year ranking reports), mt = metric ton; yr. = year; avg. = average; YTD = year to date; "-" = not applicable.
Source: USDA, Foreign Agricultural Service.

destinations were primarily to Japan (13,200 mts), Haiti (8,000 mts), Mexico (4,800 mts), Canada (1,300 mts), and South Korea (1,200 mts).

Source: USDA FAS - <https://apps.fas.usda.gov/esrqs/#/reports/weeklyexportsalesreportdetail>



COARSE GRAINS

Corn: Net sales of 883,300 mts for 2025/2026 were down 13% from the previous week and 32% from the prior 4-week average. Increases primarily for Japan (336,300 mts, including 114,200 mts switched from unknown destinations and decreases of 80,900 mts), Mexico (243,900 mts, including decreases of 32,500 mts), South Korea (193,900 mts, including 65,000 mts switched from unknown destinations and decreases of 100 mts), Colombia (77,700 mts, including

53,000 mts switched from unknown destinations), and Spain (57,800 mts, including 60,000 mts switched from unknown destinations and decreases of 2,200 mts), were offset by reductions for unknown destinations (68,300 mts), Morocco (35,000 mts), El Salvador (5,000 mts), the United Kingdom (2,300 mts), and Taiwan (1,100 mts). Net sales of 243,700 mts for 2026/2027 primarily for Costa Rica (117,400 mts), unknown destinations (70,600 mts), Japan (62,000 mts), and Honduras (12,000 mts), were offset by reductions for Panama (21,000 mts).

Exports of 1,723,700 mts were up 7% from the previous week and 2% from the prior 4-week average. The destinations were primarily to Japan (592,200 mts), Mexico (408,000 mts), Portugal (159,700 mts), Colombia (148,200 mts), and South Korea (132,600 mts).

Barley: Total net sales reductions of 5,700 mts for 2025/2026 were for Japan. Net sales of 7,200 mts were reported for Japan (5,700 mts) and Canada (1,500 mts). Exports of 700 mts were to Canada.

Sorghum: Net sales of 62,900 mts for 2025/2026 were down 5% from the previous week, but up noticeably from the prior 4-week average. Increases reported for China (73,600 mts, including 66,000 mts switched from unknown destinations and decreases of 3,600 mts), were offset by reductions for Japan (10,700 mts).

Exports of 183,900 mts were up noticeably from the previous week and from the prior 4-week average. The destination was China.

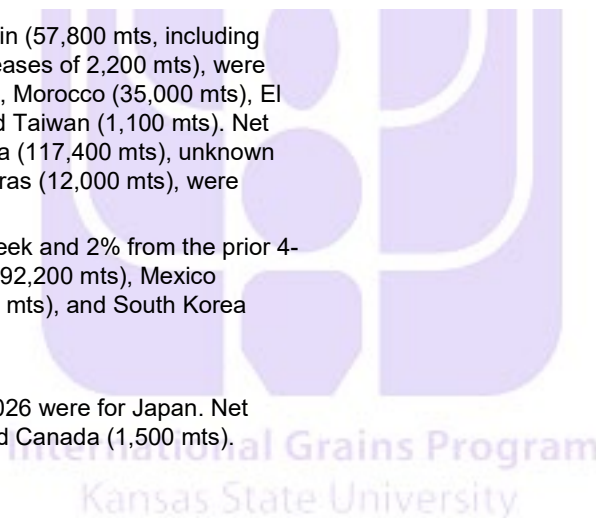
Source: USDA FAS - <https://apps.fas.usda.gov/esrqs/#/reports/weeklyexportsalesreportdetail>

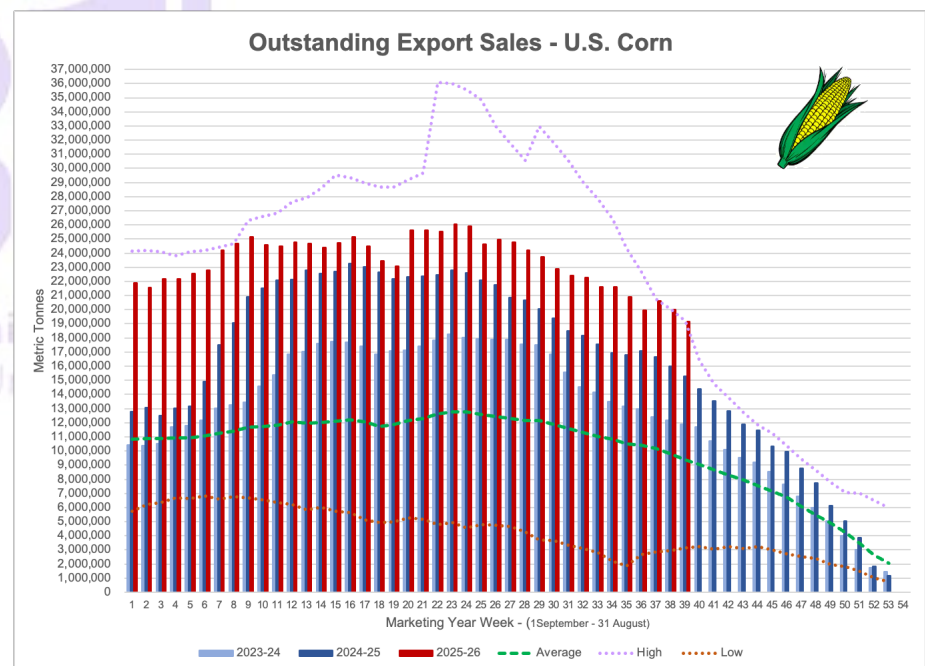
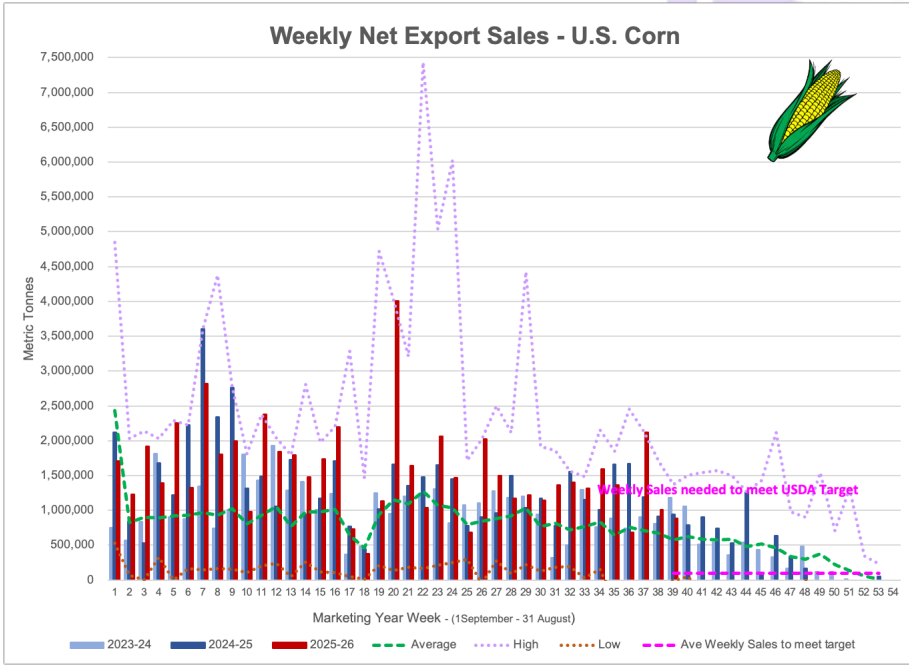
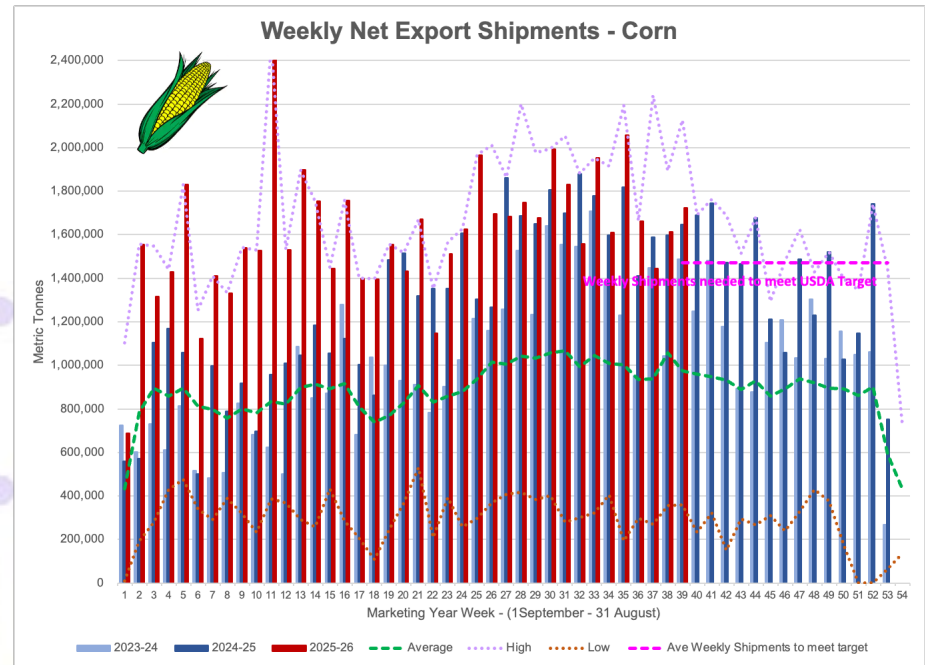
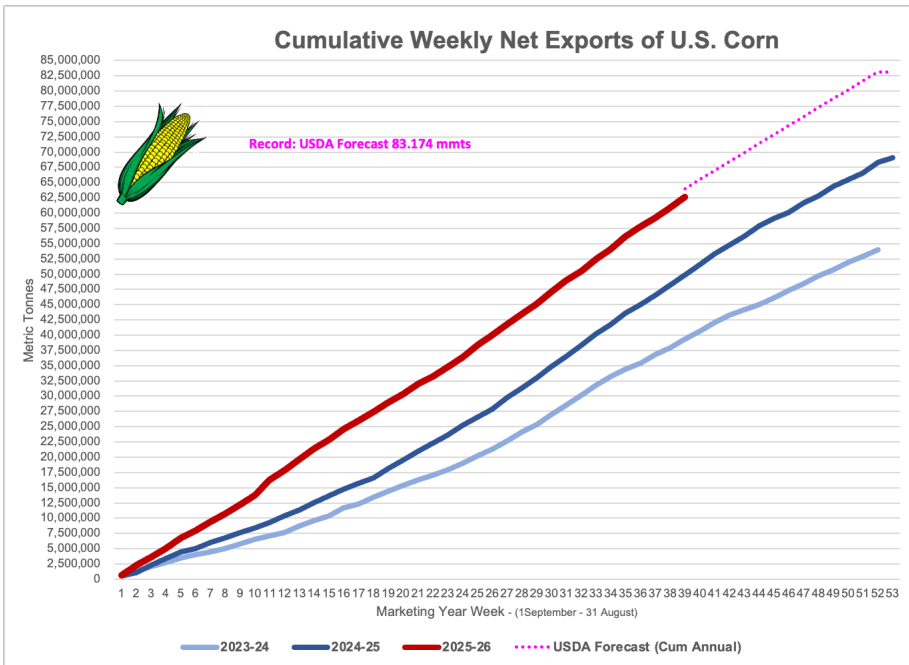
Table 15. Top 5 importers of U.S. corn

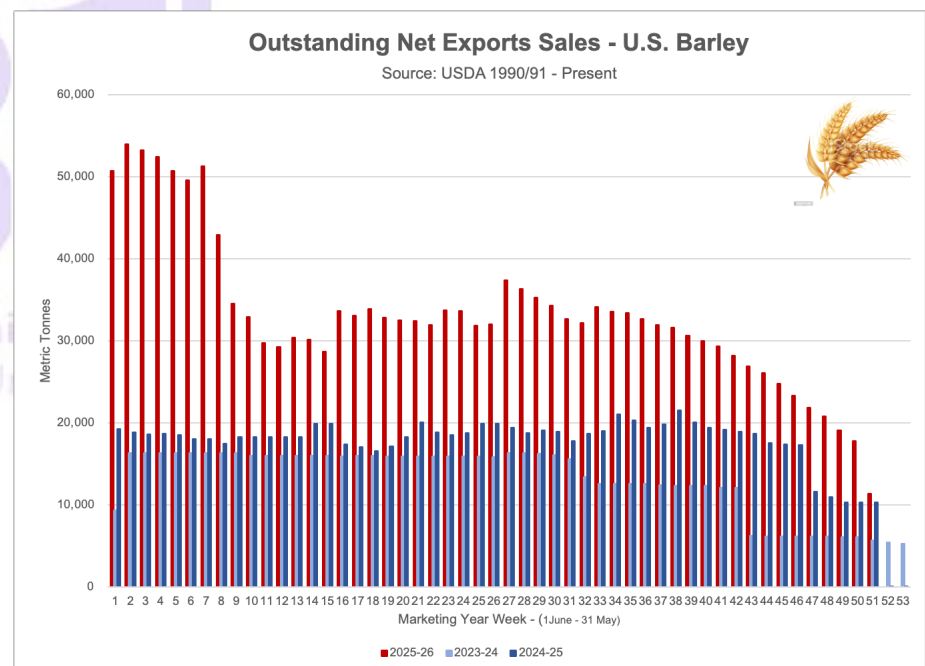
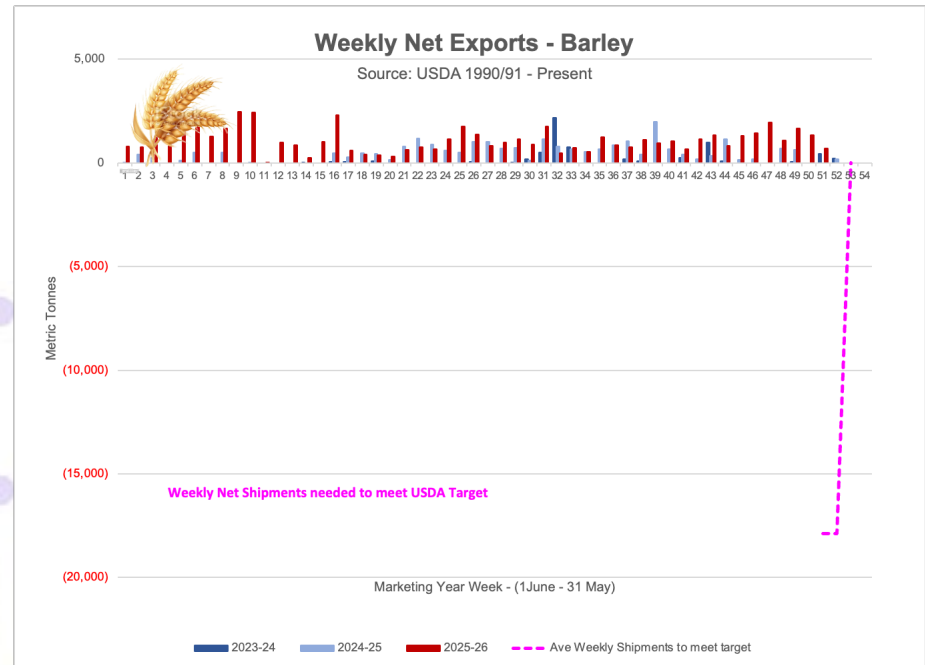
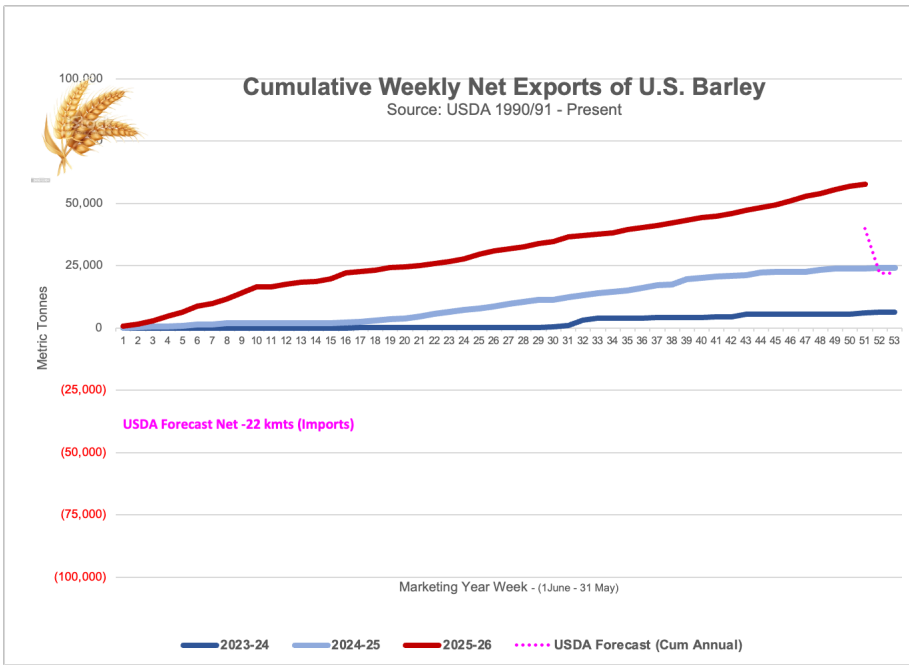
For the week ending 5/28/2026	Total commitments (1,000 mt)			% change current MY from last MY	Exports 3-year average 2022-24 (1,000 mt)
	YTD MY 2026/27	YTD MY 2025/26	YTD MY 2024/25		
Mexico	2,019	23,190	21,466	8	19,839
Japan	588	14,476	11,396	27	10,478
Colombia	43	7,467	6,721	11	5,493
China	0	0	33	-100	3,461
Korea	0	8,578	5,386	59	3,127
Top 5 importers	2,650	53,711	45,003	19	42,399
Total U.S. corn export sales	3,197	81,767	65,138	26	54,276
% of YTD current month's export projection	4%	98%	90%	-	-
Change from prior week	244	883	942	-	-
Top 5 importers' share of U.S. corn export sales	83%	66%	69%	-	78%
USDA forecast May 2026	80,014	83,824	72,597	15	-
Corn use for ethanol USDA forecast May 2026	142,240	142,240	138,075	3	-

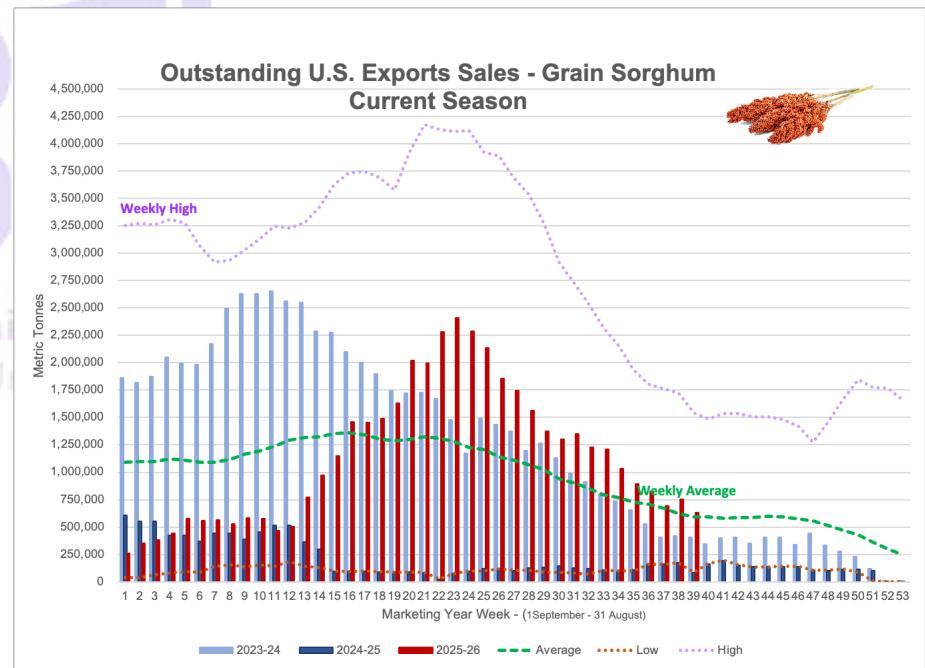
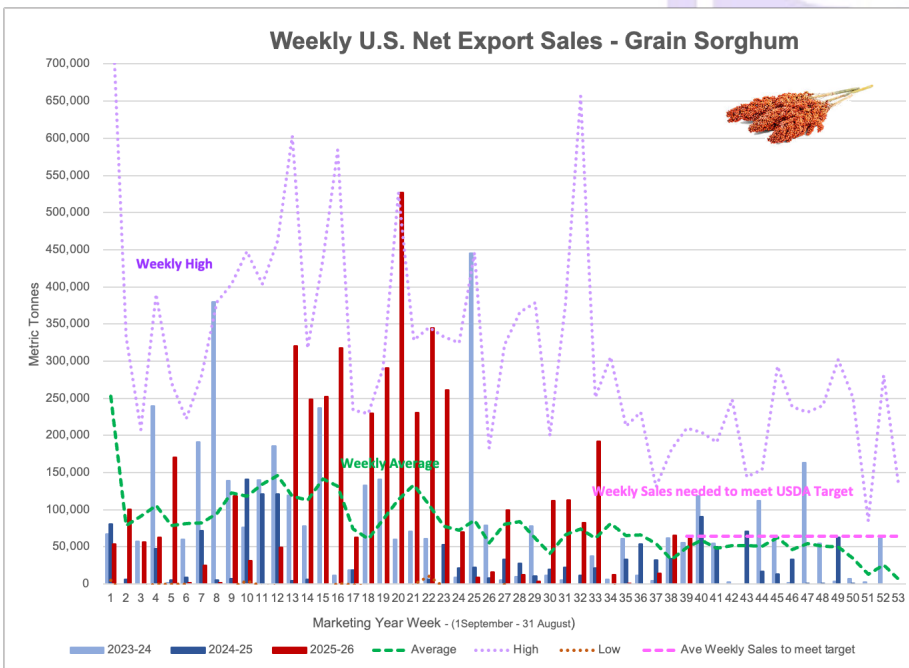
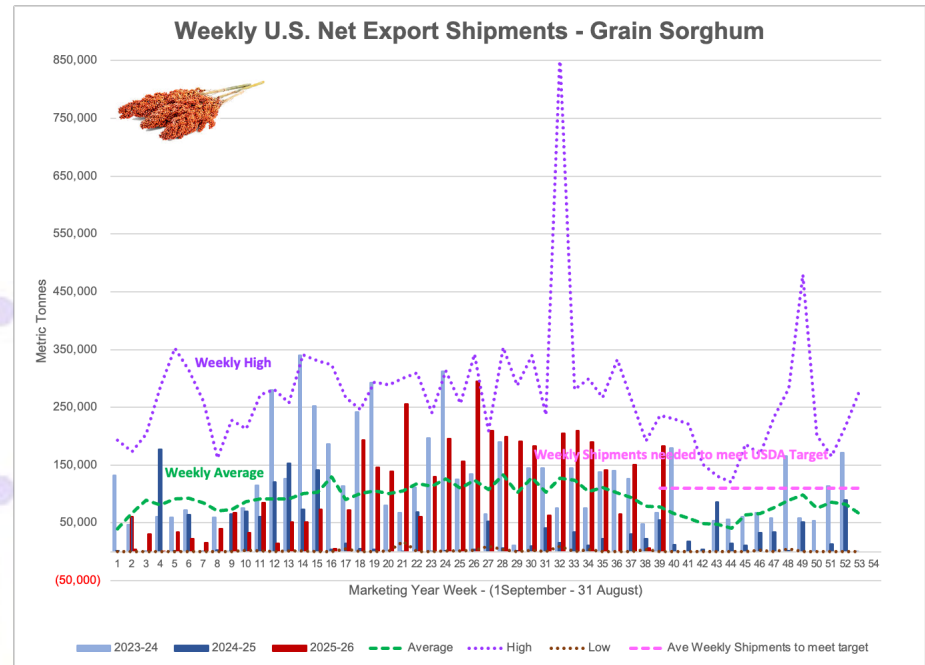
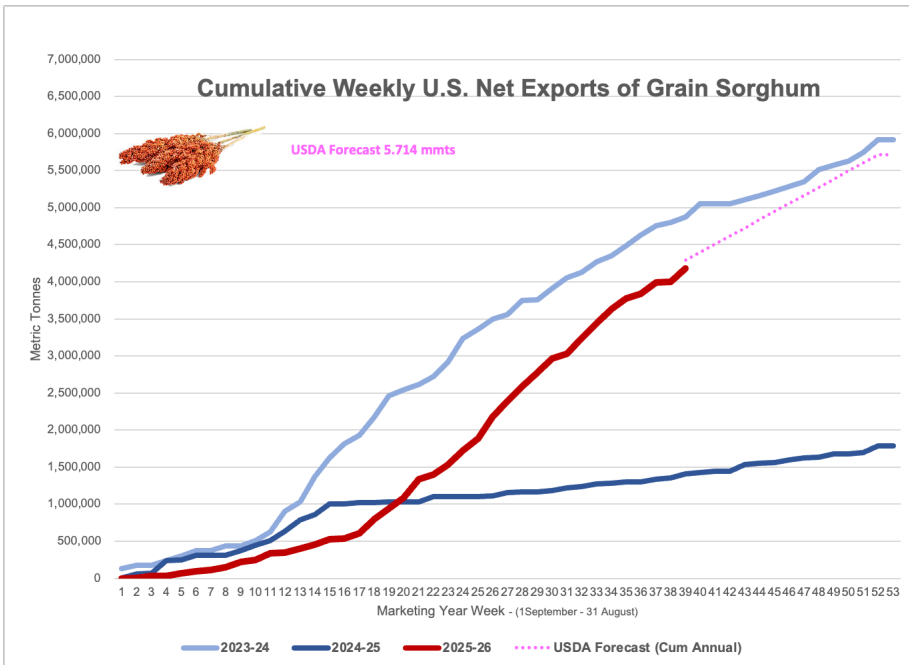
Note: The top 5 importers are based on USDA, Foreign Agricultural Service (FAS) marketing year ranking reports for marketing year (MY) 2024/25 (September 1 - August 31). "Total commitments" = cumulative exports (shipped) + outstanding sales (unshipped), from FAS weekly export sales report, or export sales query. Total commitments' change (net sales) from prior week could include revisions from previous week's outstanding sales or accumulated sales. In rightmost column, "Exports" = accumulated exports (as defined in FAS marketing year ranking reports). mt = metric ton; yr. = year; avg. = average; YTD = year to date; "-" = not applicable.

Source: USDA, Foreign Agricultural Service.









OILSEED COMPLEX

➤ Soybean Export Shipments and Sales

Soybeans: Net sales of 276,900 mts for 2025/2026 were down 8% from the previous week, but up 24% from the prior 4-week average. Increases primarily for China (74,800 mts, including 66,000 mts switched from unknown destinations), Mexico (67,400 mts, including decreases of 3,500 mts), Indonesia (53,700 mts, including 25,000 mts switched from unknown destinations and decreases of 7,000 mts), Japan (51,700 mts, including decreases of 300 mts), and Taiwan (32,600 mts, including decreases of 1,200 mts), were offset by reductions for unknown destinations (72,800 mts) and Colombia (1,300 mts). Net sales of 243,000 mts for 2026/2027 were reported for unknown destinations (132,000 mts), Costa Rica (68,000 mts), Mexico (40,000 mts), and Indonesia (3,000 mts).

Exports of 569,300 mts were unchanged from the previous week, but down 1% from the prior 4-week average. The destinations were primarily to China (208,800 mts), Egypt (110,900 mts), Mexico (108,200 mts), Indonesia (67,200 mts), and Japan (16,000 mts).

Exports for Own Account: For 2025/2026, the current exports for own account outstanding balance of 1,800 mts, all Taiwan.

Soybean Meal Export Shipments and Sales

Soybean Cake and Meal: Net sales of 169,300 mts for 2025/2026 were down 44% from the previous week and 53% from the prior 4-week average. Increases primarily for Mexico (71,600 mts, including decreases of 100 mts), unknown destinations (40,500 mts), the Philippines (11,600 mts), Colombia (9,500 mts), and the United Kingdom (9,300 mts, including 9,500 mts switched from unknown destinations and decreases of 200 mts), were offset by reductions for Vietnam (2,700 mts), Panama (2,200 mts), Nepal (1,100 mts), Guatemala (700 mts), and Jamaica (100 mts). Net sales of 62,400 mts for 2026/2027 were reported for Canada (33,800 mts) and Mexico (28,600 mts). Exports of 270,700 mts were down 32% from the previous week and

Table 16. Top 5 importers of U.S. soybeans

For the week ending 5/28/2026	Total commitments (1,000 mt)			% change current MY from last MY	Exports 3-year average 2022-24 (1,000 mt)
	YTD MY 2026/27	YTD MY 2025/26	YTD MY 2024/25		
China	0	11,954	22,479	-47	26,078
Mexico	222	4,814	4,909	-2	4,762
Japan	75	2,025	1,866	8	2,107
Egypt	0	4,652	2,970	57	2,098
Indonesia	16	2,189	1,706	28	1,997
Top 5 importers	313	25,634	33,929	-24	37,042
Total U.S. soybean export sales	890	39,948	48,528	-18	48,941
% of YTD current month's export projection	2%	96%	95%	-	-
Change from prior week	243	277	194	-	-
Top 5 importers' share of U.S. soybean export sales	35%	64%	70%	-	76%
USDA forecast, May 2026	44,361	41,640	51,220	-19	-

Note: The top 5 importers are based on USDA, Foreign Agricultural Service (FAS) marketing year ranking reports for marketing year (MY) 2024/25 (September 1 - August 31). "Total commitments" = cumulative exports (shipped) + outstanding sales (unshipped), from FAS weekly export sales report, or export sales query. Total commitments' change (net sales) from prior week could include revisions from previous week's outstanding sales or accumulated sales. In rightmost column, "Exports" = accumulated exports (as defined in FAS marketing year ranking reports). mt = metric ton; yr. = year; avg. = average; YTD = year to date; "-" = not applicable.

Source: USDA, Foreign Agricultural Service.

18% from the prior 4-week average. The destinations were primarily to the Philippines (85,900 mts), Mexico (50,800 mts), Colombia (38,800 mts), Canada (30,600 mts), and Guatemala (15,300 mts).

Optional Origin Sales: For 2025/2026, new optional origin sales of 20,000 mts were reported for Ecuador. The current outstanding balance of 62,100 mts, all Ecuador. For 2026/2027, the current outstanding balance of 2,000 mts, all Ecuador.

➤ Soybean Oil Export Shipments and Sales

Soybean Oil: No net sales for 2025/2026 were reported for the week. Exports of 800 mts were down 67% from the previous week and 47% from the prior 4-week average. The destinations were primarily to Canada (500 mts), Kuwait (100 mts), and Mexico (100 mts).

Source: USDA FAS - <https://apps.fas.usda.gov/esrqs#/reports/weeklyexportsalesreportdetail>

