



IGP Export Pace

Wheat, Corn, Grain Sorghum, and Soybean Complex

10th April 2026
Department of Grain & Food Science,
Kansas State University

by Guy H. Allen – Senior Economist, International Grains Program, Kansas State University

For timely market news and quotes see IGP Market Information Website:

<http://www.dtnigp.com/> Find me on Twitter [igpguy1 @igpguy1](#)

KSU Ag Manager Link: <https://www.agmanager.info/grain-marketing/publications/us-grain-exports-and-trade>

KSU Agriculture Today Podcast Link: <https://agtodayksu.libsyn.com/timeliness-of-corn-and-soybean-plantingworld-grain-supply-and-demand>

IGP Market Information: <http://www.dtnigp.com/index.cfm>

USDA Transportation Report: <https://www.ams.usda.gov/services/transportation-analysis/gtr>

USDA FAS Historical Grain Shipments: <https://apps.fas.usda.gov/export-sales/wkHistData.htm>, <https://apps.fas.usda.gov/export-sales/complete.htm>

Contents

U.S. EXPORT ACTIVITY	1
➤ Export Sales	1
➤ Vessel Loadings	1
➤ Export Inspections	2
➤ BARGE MOVEMENTS	4
CEREAL GRAINS	5
➤ Wheat Export Shipments and Sales	5
➤ Rice Export Shipments and Sales	5
COARSE GRAINS	7
OILSEED COMPLEX	11
➤ Soybean Export Shipments and Sales	11
➤ Soybean Oil Export Shipments and Sales	11

- This summary based on reports for the 10th of April 2026
- Outstanding Export Sales (Unshipped Balances) on the 2nd of April 2026
- Export Shipments in Current Marketing Year
- Daily Sales Reported for the 9th of April 2026

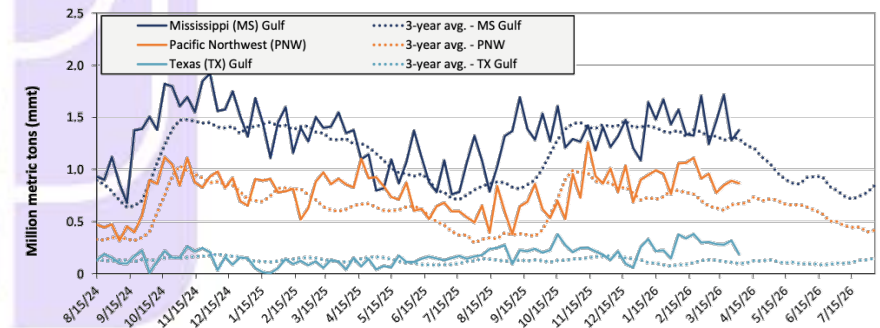
U.S. EXPORT ACTIVITY

➤ Export Sales

- Export Sales data for the week ending April 02, unshipped balances of corn, soybeans, and wheat for marketing year (MY) 2025/26 totaled 33.87 mmmts, down 3% from last week and up 24% from the same time last year.
- Net corn export sales were 1.36 mmmts, up 18% from last week.
- Net soybean export sales were .30 mmmts, down 16% from last week.
- Net wheat export sales were .164 mmmts, up significantly from last week.

➤ Vessel Loadings

Figure 18. U.S. grain inspections for U.S. Gulf and PNW (wheat, corn, and soybeans)



Source: USDA, Federal Grain Inspection Service.

Ocean - For the week ending April 2, 29 oceangoing grain vessels were loaded in the Gulf—4% more the same period last year. Within the next 10 days (starting April 3), 41 vessels were expected to be loaded - 3% more than the same period last year. As of April 2, the rate for shipping a metric ton (mt) of grain from the U.S. Gulf to Japan was \$63.50, up 4% from the previous week. The rate from the Pacific Northwest to Japan was \$34.00 per mt, unchanged from the previous week.

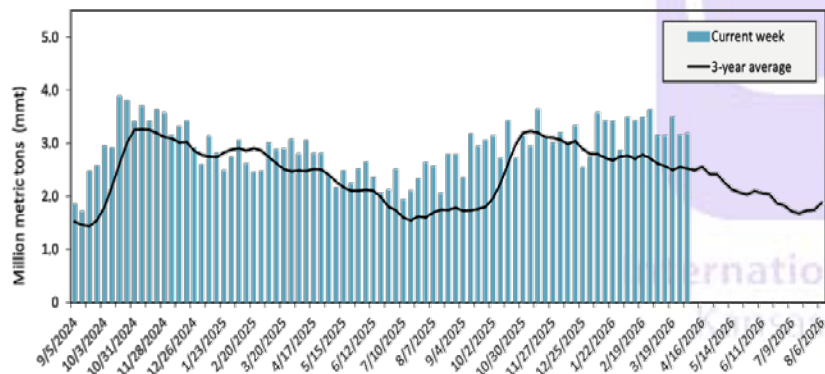
Table 14. U.S. export balances and cumulative exports (1,000 metric tons)

Grain Exports		Wheat					Corn	Soybeans	Total	
		Hard red winter (HRW)	Soft red winter (SRW)	Hard red spring (HRS)	Soft white wheat (SWW)	Durum				All wheat
Current unshipped (outstanding) export sales	For the week ending 4/2/2026	1,194	520	1,227	989	121	4,051	22,425	7,389	33,865
	This week year ago	1,262	490	1,220	1,179	84	4,236	18,495	4,679	27,410
	Last 4 wks. as % of same period 2024/25	103	128	106	86	157	103	126	170	130
Current shipped (cumulative) exports sales	2025/26 YTD	7,413	2,782	5,127	4,415	485	20,223	48,962	30,516	99,700
	2024/25YTD	4,083	2,648	5,520	4,577	272	17,100	36,525	41,474	95,099
	YTD 2025/26 as % of 2024/25	182	105	93	96	178	118	134	74	105
	Total 2024/25	5,377	3,106	6,560	5,730	335	21,107	69,081	50,106	140,295
	Total 2023/24	3,535	4,260	6,314	3,906	526	18,540	54,277	44,510	117,328

Note: The marketing year for wheat is June 1 to May 31 and, for corn and soybeans, September 1 to August 31. YTD = year-to-date; wks. = weeks.
Source: USDA, Foreign Agricultural Service.

➤ Export Inspections

Figure 17. U.S. grain inspected for export (wheat, corn, and soybeans)



GRAINS INSPECTED AND/OR WEIGHED FOR EXPORT
REPORTED IN WEEK ENDING APR 02, 2026
-- METRIC TONS --

GRAIN	WEEK ENDING			CURRENT MARKET YEAR TO DATE	PREVIOUS MARKET YEAR TO DATE
	04/02/2026	03/26/2026	04/03/2025		
BARLEY	0	0	122	7,145	9,867
CORN	2,002,151	1,879,892	1,613,460	48,465,365	35,684,528
FLAXSEED	48	24	0	528	384
MIXED	0	0	0	0	122
OATS	0	0	0	5,785	647
RYE	0	0	0	0	0
SORGHUM	59,357	179,781	19,859	2,925,703	1,604,223
SOYBEANS	779,352	694,076	816,857	30,670,386	41,591,614
SUNFLOWER	0	0	0	40	0
WHEAT	334,106	386,254	335,388	20,666,798	17,728,820
Total	3,175,014	3,140,027	2,785,686	102,741,750	96,620,205

CROP MARKETING YEARS BEGIN JUNE 1 FOR WHEAT, RYE, OATS, BARLEY AND FLAXSEED; SEPTEMBER 1 FOR CORN, SORGHUM, SOYBEANS AND SUNFLOWER SEEDS. INCLUDES WATERWAY SHIPMENTS TO CANADA.

SOYBEANS INSPECTED AND/OR WEIGHED FOR EXPORT
BY PORT AREA AND COUNTRY OF DESTINATION
REPORTED IN WEEK ENDING APR 02, 2026
-- METRIC TONS --

Source: https://www.ams.usda.gov/mnreports/wa_gr101.txt

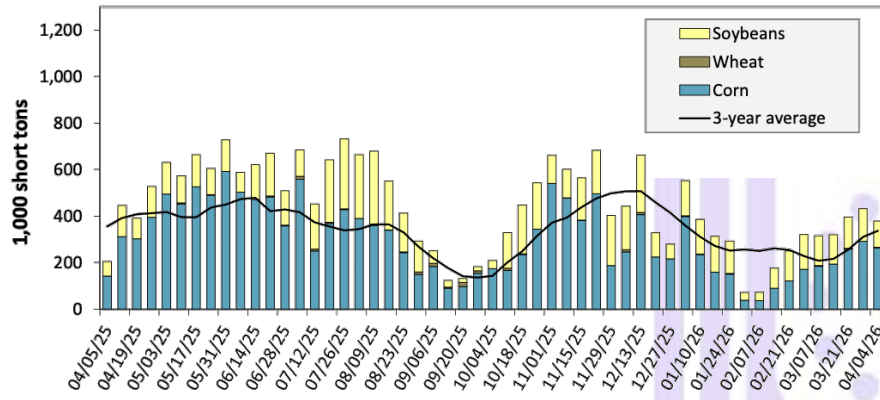
Table 18. Grain inspections for export by U.S. port region (1,000 metric tons)

Port regions	Commodity	For the week ending 04/02/2026	Previous week*	Current week as % of previous	2026 YTD*	2025 YTD*	2026 YTD as % of 2025 YTD	Last 4-weeks as % of:		2025 total*
								Last year	Prior 3-yr. avg.	
Pacific Northwest	Corn	485	590	82	6,630	6,328	105	82	122	24,214
	Soybeans	270	135	201	2,976	1,724	173	233	424	2,957
	Wheat	113	166	68	2,552	2,602	98	57	69	12,271
	All grain	868	891	97	12,158	10,744	113	92	126	39,721
Mississippi Gulf	Corn	1,078	822	131	9,970	9,667	103	119	138	37,115
	Soybeans	235	393	60	8,532	7,851	109	82	87	23,350
	Wheat	62	66	94	841	926	91	85	77	3,980
	All grain	1,376	1,281	107	19,343	18,444	105	103	113	64,484
Texas Gulf	Corn	22	37	59	375	105	358	205	276	590
	Soybeans	0	13	0	100	106	94	63	190	1,431
	Wheat	109	90	120	1,205	731	165	138	218	4,690
	All grain	188	317	59	3,742	1,027	364	284	274	7,774
Interior	Corn	394	343	115	4,140	3,071	135	116	134	15,546
	Soybeans	171	149	115	1,913	1,742	110	113	118	7,712
	Wheat	50	52	97	751	709	106	115	125	3,104
	All grain	617	549	112	6,908	5,599	123	114	127	26,887
Great Lakes	Corn	23	0	n/a	23	0	n/a	n/a	n/a	414
	Soybeans	0	0	n/a	0	0	n/a	n/a	0	63
	Wheat	0	11	0	22	22	101	n/a	145	434
	All grain	23	11	205	45	22	205	n/a	204	911
Atlantic	Corn	0	88	0	466	92	504	647	n/a	607
	Soybeans	102	5	n/a	340	417	82	704	173	1,085
	Wheat	0	0	n/a	0	0	n/a	n/a	0	81
	All grain	102	93	110	806	510	158	666	389	1,773
All Regions	Corn	2,002	1,880	107	21,603	19,264	112	109	137	78,486
	Soybeans	779	694	112	14,267	11,944	119	112	123	36,851
	Wheat	334	386	86	5,371	4,990	108	84	97	24,560
	All grain	3,175	3,143	101	43,406	36,449	119	110	128	141,803

*Note: Data include revisions from prior weeks; "All grain" includes corn, soybeans, wheat, sorghum, oats, barley, rye, sunflower, flaxseed, and mixed grains; "All regions" includes listed regions and other minor regions not listed; YTD = year-to-date; n/a = not available or no change. A "-" in the table indicates a percentage change with a near-zero denominator for the period.
Source: USDA, Federal Grain Inspection Service.

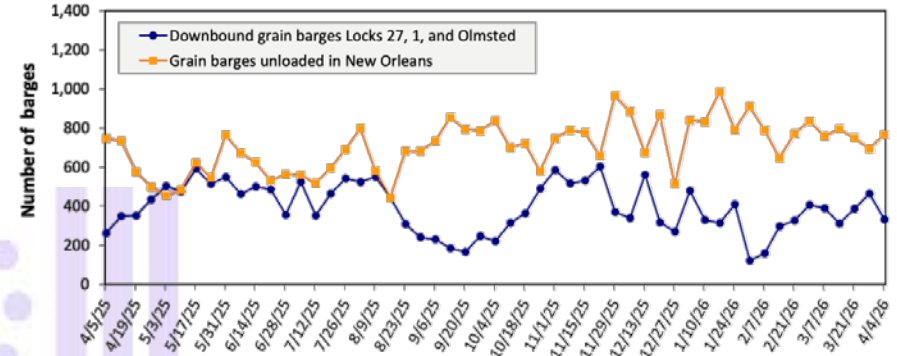
➤ BARGE MOVEMENTS

Figure 12. Barge movements on the Mississippi River (Locks 27-Granite City, IL)



Note: The 3-year average is a 4-week moving average.
Source: U.S. Army Corps of Engineers.

Figure 14. Grain barges for export in New Orleans region



Note: Olmsted = Olmsted Locks and Dam.
Source: U.S. Army Corps of Engineers and USDA, Agricultural Marketing Service.

Barge – For the week ending April 4th, barged grain movements totaled 535,288 tons. This was 23% less than the previous week and 46% more than the same week last year. For the week ending April 4, 332 barges moved down river, 131 fewer than the previous week. There were 765 grain barges unloaded in the New Orleans Region, 10% more than the previous week.

Table 10. Barged grain movements (1,000 tons)

For the week ending 04/04/2026	Corn	Wheat	Soybeans	Other	Total
Mississippi River (Rock Island, IL (L15))	42	0	23	0	65
Mississippi River (Winfield, MO (L25))	135	2	62	0	199
Mississippi River (Alton, IL (L26))	257	2	94	0	353
Mississippi River (Granite City, IL (L27))	264	2	113	0	378
Illinois River (La Grange)	110	0	37	0	146
Ohio River (Olmsted)	102	6	32	0	140
Arkansas River (L1)	0	14	3	0	17
Weekly total - 2026	365	22	148	0	535
Weekly total - 2025	221	17	126	4	367
2026 YTD	3,530	232	2,698	28	6,487
2025 YTD	4,287	265	3,196	75	7,823
2026 as % of 2025 YTD	82	87	84	37	83
Last 4 weeks as % of 2025	97	96	96	3	94
Total 2025	20,015	1,259	11,322	166	32,761

Note: "Other" refers to oats, barley, sorghum, and rye. Total may not add up due to rounding. YTD = year to date. Weekly total, YTD, and calendar year total include Mississippi River lock 27, Ohio River Olmsted lock, and Arkansas Lock 1. "L" (as in "L15") refers to a lock, locks, or lock and dam facility.
Source: U.S. Army Corps of Engineers.

CEREAL GRAINS

➤ Wheat Export Shipments and Sales

Wheat: Net sales of 163,600 metric tons (MT) for 2025/2026 were up noticeably from the previous week, but down 39 percent from the prior 4-week average. Increases primarily for Venezuela (52,500 MT, including 49,000 MT switched from unknown destinations), Japan (51,000 MT), Burma (45,000 MT, including 16,800 MT switched from unknown destinations), Malaysia (21,500 MT, including 20,900 MT switched from unknown destinations), and the Dominican Republic (20,200 MT, including decreases of 400 MT), were offset by reductions for unknown destinations (118,300 MT) and Costa Rica (100 MT). Net sales of 90,700 MT for 2026/2027 were primarily for Mexico (33,800 MT), the Philippines (18,000 MT), Japan (14,800 MT), unknown destinations (10,000 MT), and El Salvador (7,100 MT). Exports of 371,200 MT were up 9 percent from the previous week, but down 4 percent from the prior 4-week average. The destinations were primarily to Mexico (92,300 MT), South Korea (55,000 MT), Venezuela (52,500 MT), the Dominican Republic (28,200 MT), and Honduras (27,100 MT).

Source: USDA FAS - <https://apps.fas.usda.gov/esrqs/#/reports/weeklyexportsalesreportdetail>

➤ Rice Export Shipments and Sales

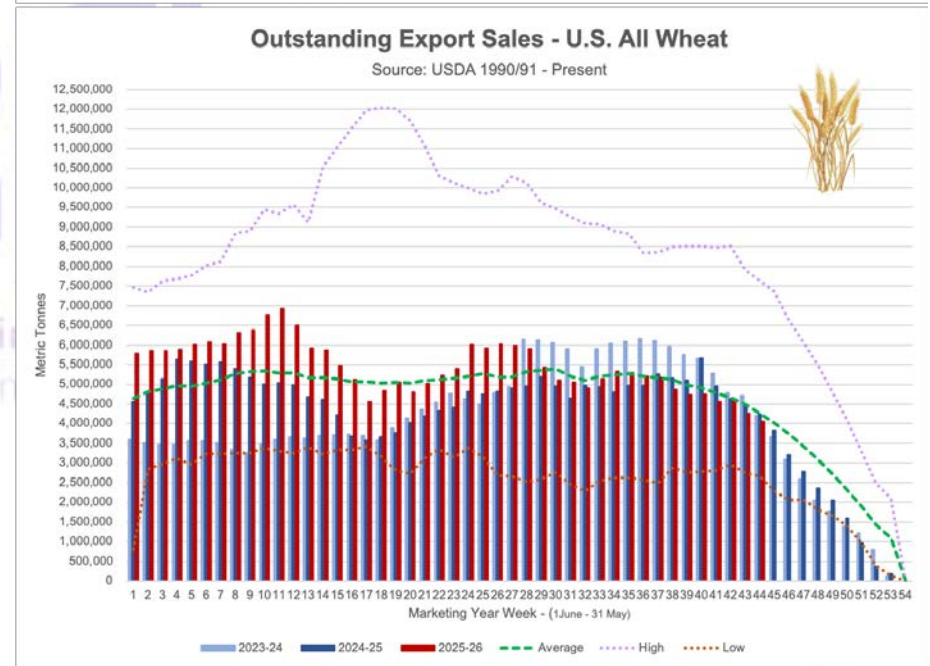
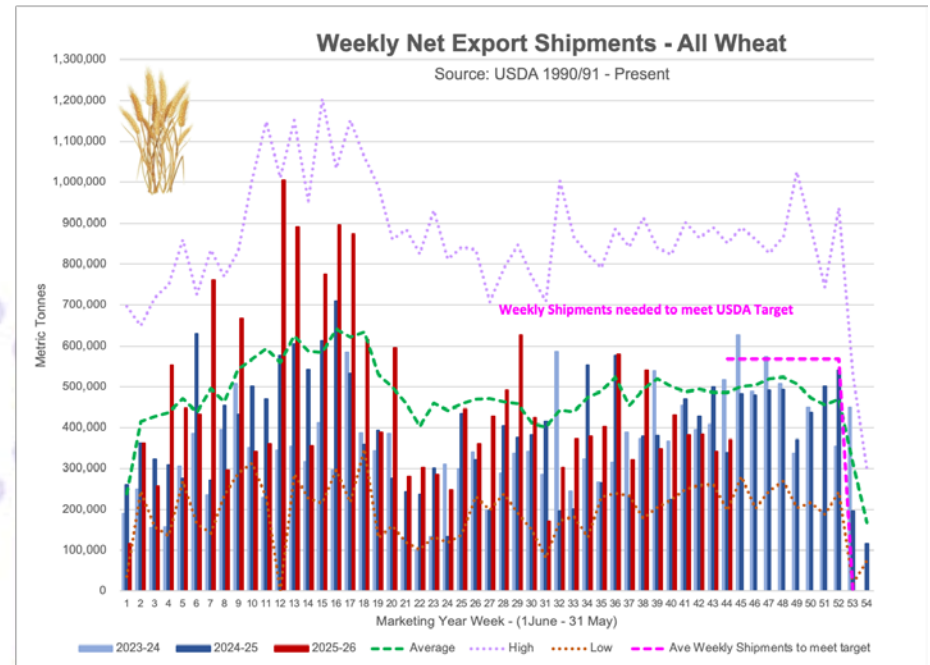
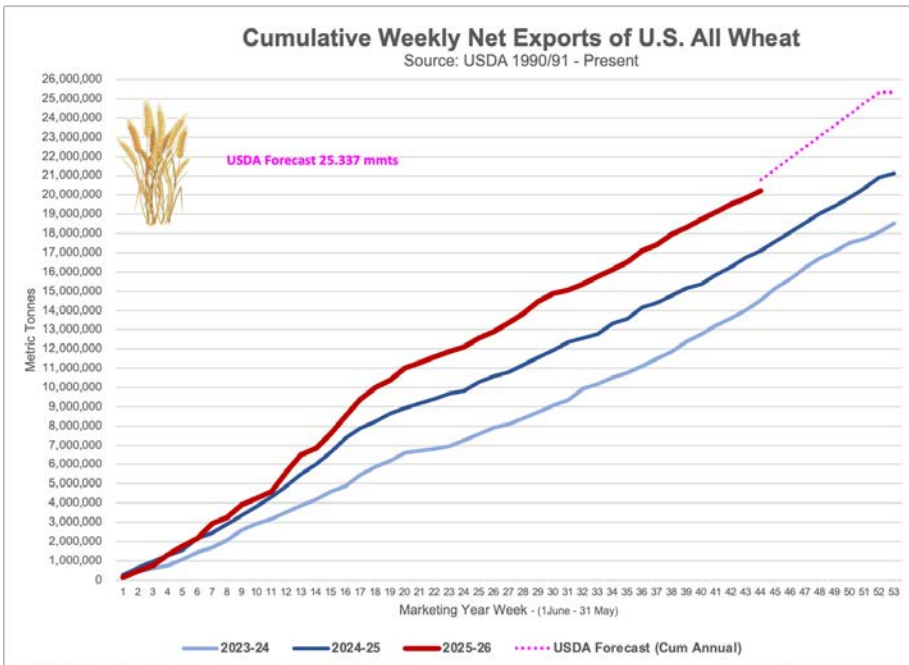
Rice: Net sales of 4,800 MT for 2025/2026 were down 94 percent from the previous week and 92 percent from the prior 4-week average. Increases primarily for unknown destinations (10,500 MT), Honduras (5,200 MT), Canada (5,100 MT, including decreases of 200 MT), Mexico (2,100 MT, including decreases of 100 MT), and Saudi Arabia (1,500 MT), were offset by reductions for Japan (12,800 MT), Haiti (7,100 MT), Jordan (200 MT), and Nicaragua (100 MT). Total net sales of 300 MT for 2026/2027 were for Taiwan. Exports of 17,300 MT were down 69 percent from the previous week and 61 percent from the prior 4-week average. The destinations were primarily to Haiti (7,500 MT), Mexico (2,200 MT), Taiwan (2,100 MT), Canada (2,100 MT), and Japan (900 MT).

Source: USDA FAS - <https://apps.fas.usda.gov/esrqs/#/reports/weeklyexportsalesreportdetail>

Table 17. Top 10 importers of all U.S. wheat

For the week ending 4/2/2026	Total commitments (1,000 mt)		% change current MY from last MY	Exports 3-year average 2022-24 (1,000 mt)
	YTD MY 2025/26	YTD MY 2024/25		
Mexico	4,456	3,971	12	3,358
Philippines	2,930	2,597	13	2,473
Japan	2,153	2,108	2	2,045
China	336	139	142	1,137
Korea	1,877	2,373	-21	1,674
Taiwan	975	1,010	-3	935
Thailand	657	887	-26	667
Nigeria	1,459	713	105	629
Indonesia	1,087	754	44	518
Colombia	703	451	56	489
Top 10 importers	16,632	15,003	11	13,926
Total U.S. wheat export sales	24,274	21,205	14	19,135
% of YTD current month's export projection	99%	94%	-	-
Change from prior week	164	107	-	-
Top 10 importers' share of U.S. wheat export sales	69%	71%	-	73%
USDA forecast, March 2026	24,494	22,480	9	-

Note: The top 10 importers are based on USDA, Foreign Agricultural Service (FAS) marketing year ranking reports for marketing year (MY) 2024/25 (June 1 - May 31). "Total commitments" = cumulative exports (shipped + outstanding sales (unshipped), from FAS weekly export sales report, or export sales query. Total commitments' change (net sales) from prior week could include revisions from previous week's outstanding sales or accumulated sales. In rightmost column, "Exports" = accumulated exports (as defined in FAS marketing year ranking reports). mt = metric ton; yr. = year; avg. = average; YTD = year to date; "-" = not applicable. Source: USDA, Foreign Agricultural Service.



COARSE GRAINS

Corn: Net sales of 1,361,300 MT for 2025/2026 were up 18 percent from the previous week and 8 percent from the prior 4-week average. Increases primarily for Japan (632,400 MT, including 224,700 MT switched from unknown destinations and decreases of 48,100 MT), Mexico (202,500 MT, including 60,000 MT switched from unknown destinations and decreases of 15,300 MT), Colombia (177,500 MT, including 98,900 MT switched from unknown destinations and decreases of 5,300 MT), Portugal (109,700 MT, including 65,000 MT switched from unknown destinations), and Ireland (80,000 MT, including 81,900 MT switched from unknown destinations and decreases of 1,900 MT), were offset by reductions primarily for unknown destinations (322,900 MT). Total net sales of 11,400 MT for 2026/2027 were for Mexico. Exports of 1,829,900 MT were down 8 percent from the previous week, but up 3 percent from the prior 4-week average. The destinations were primarily to Mexico (457,500 MT), Japan (433,600 MT), Colombia (279,100 MT), South Korea (134,400 MT), and Ireland (80,000 MT).

Barley: No net sales for 2025/2026 were reported for the week. Total net sales of 3,100 MT for 2026/2027 were for Canada. Exports of 1,300 MT were to Canada.

Sorghum: Total net sales of 113,500 MT for 2025/2026 were up 1 percent from the previous week and 99 percent from the prior 4-week average. Increases were for China. Exports of 62,800 MT were down 66 percent from the previous week and 68 percent from the prior 4-week average. The destination was China.

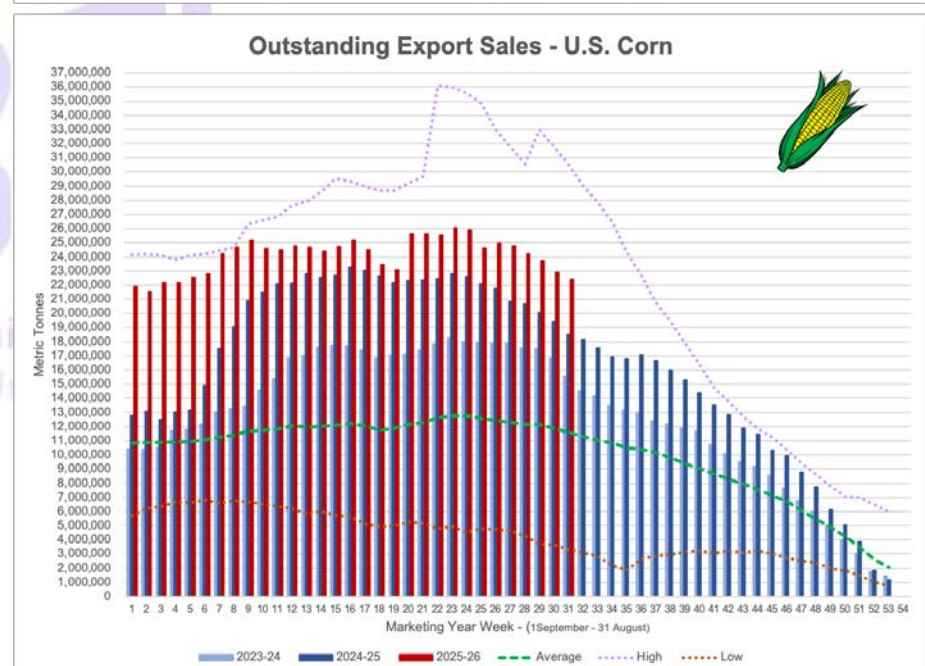
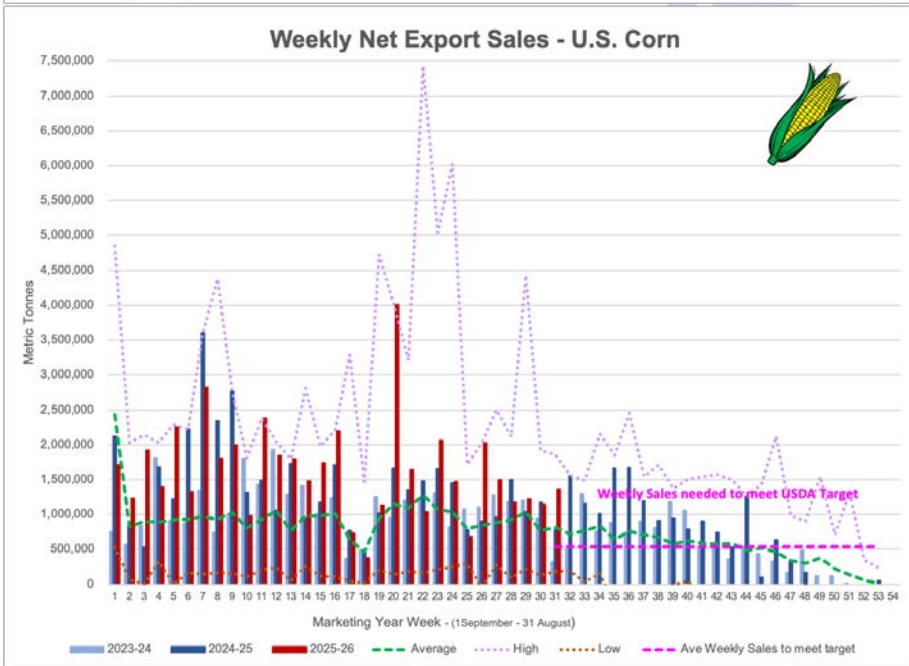
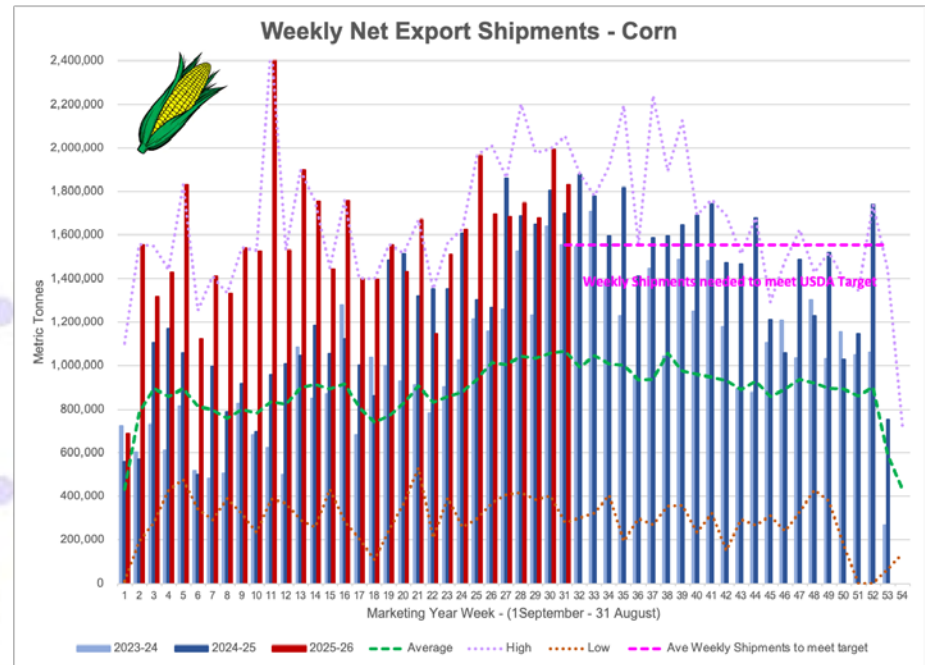
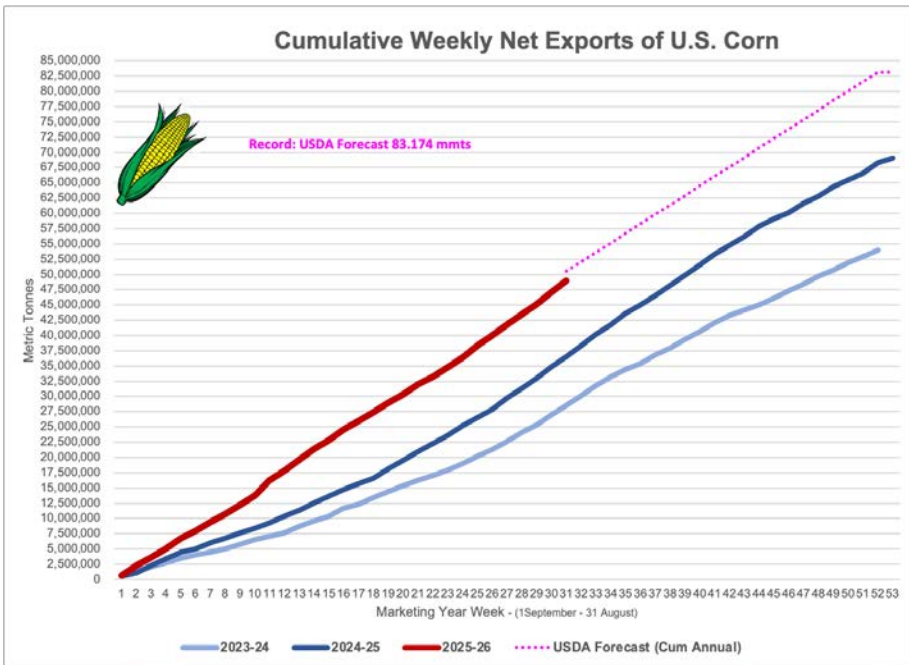
Source: USDA FAS - <https://apps.fas.usda.gov/esrqs/#/reports/weeklyexportsalesreportdetail>

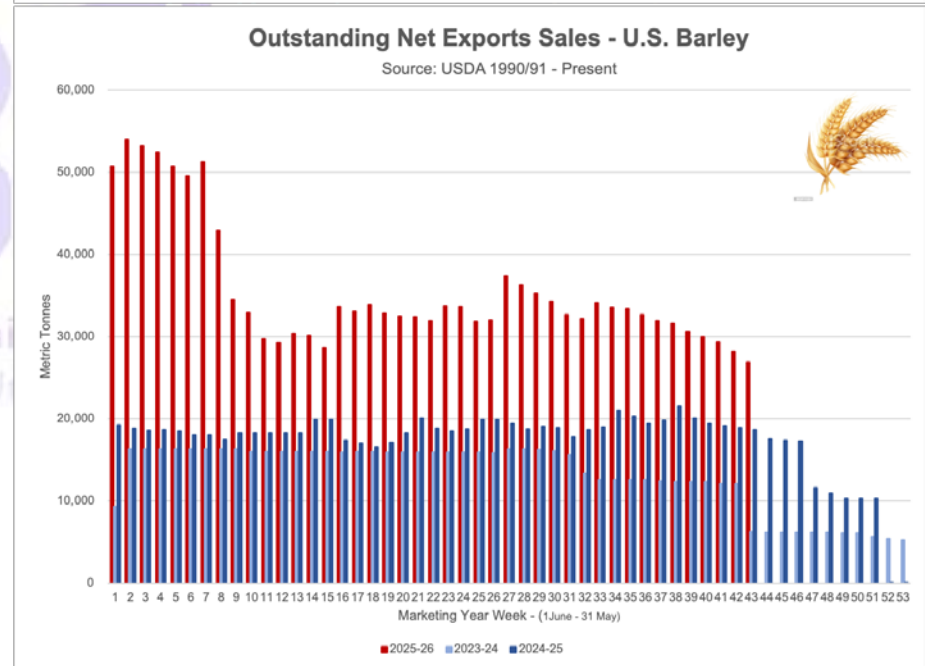
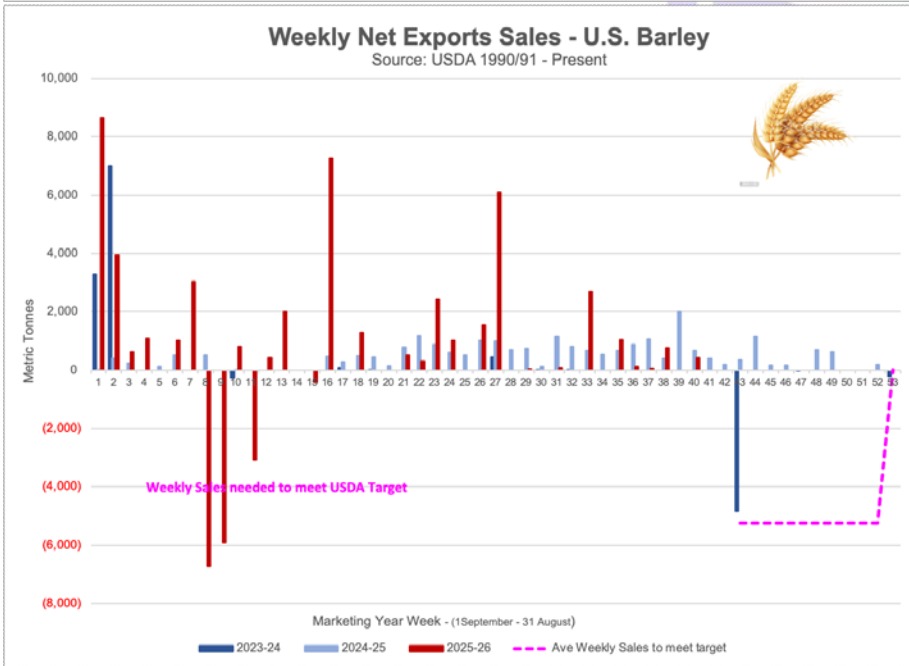
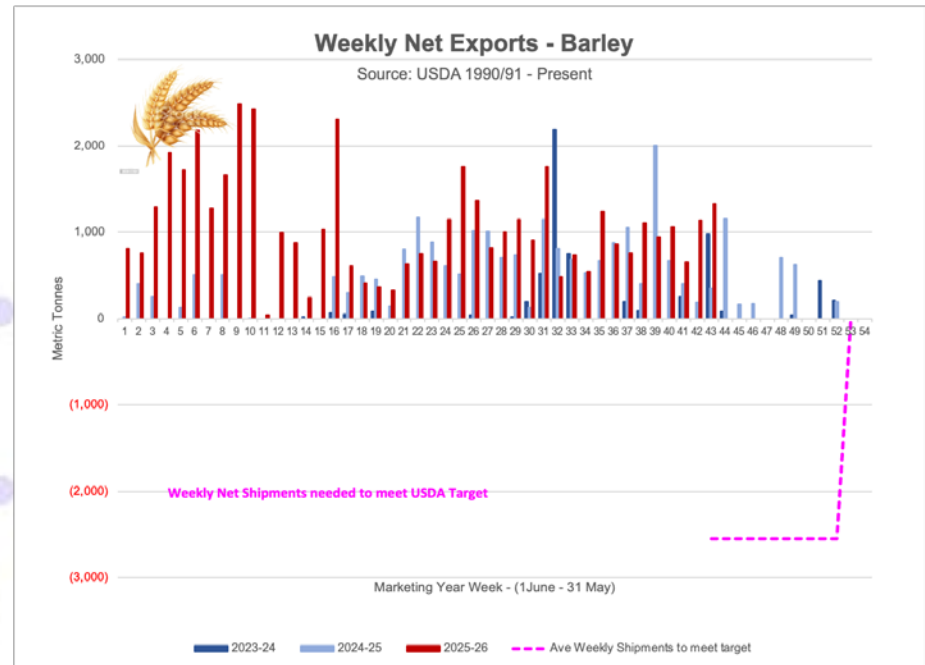
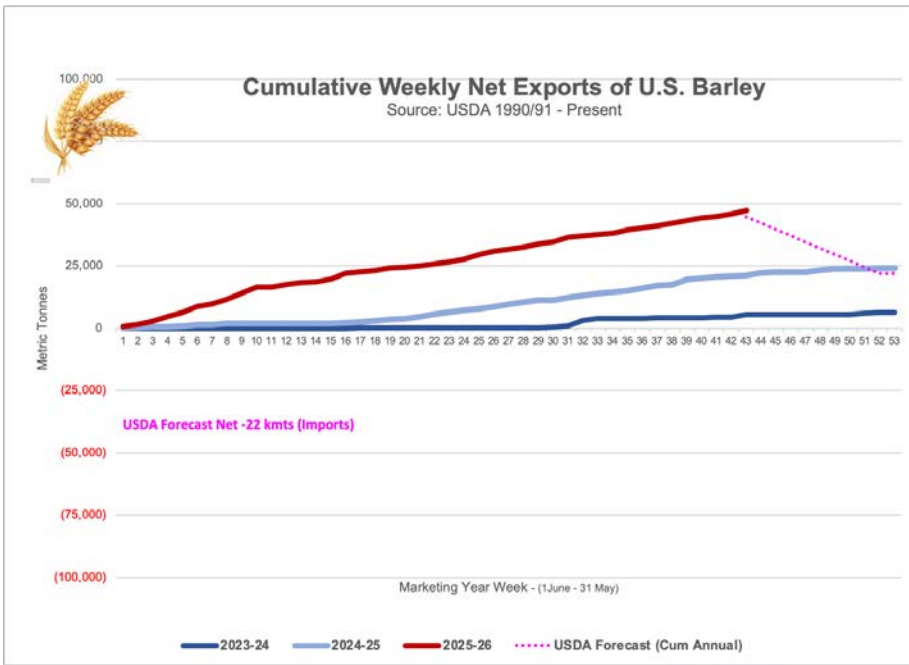
Table 15. Top 5 importers of U.S. corn

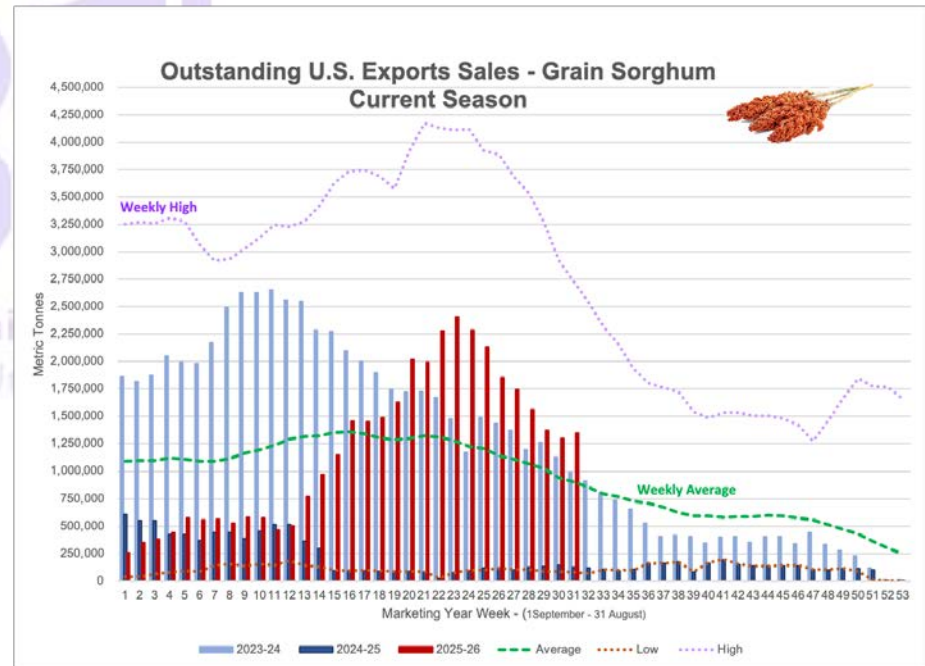
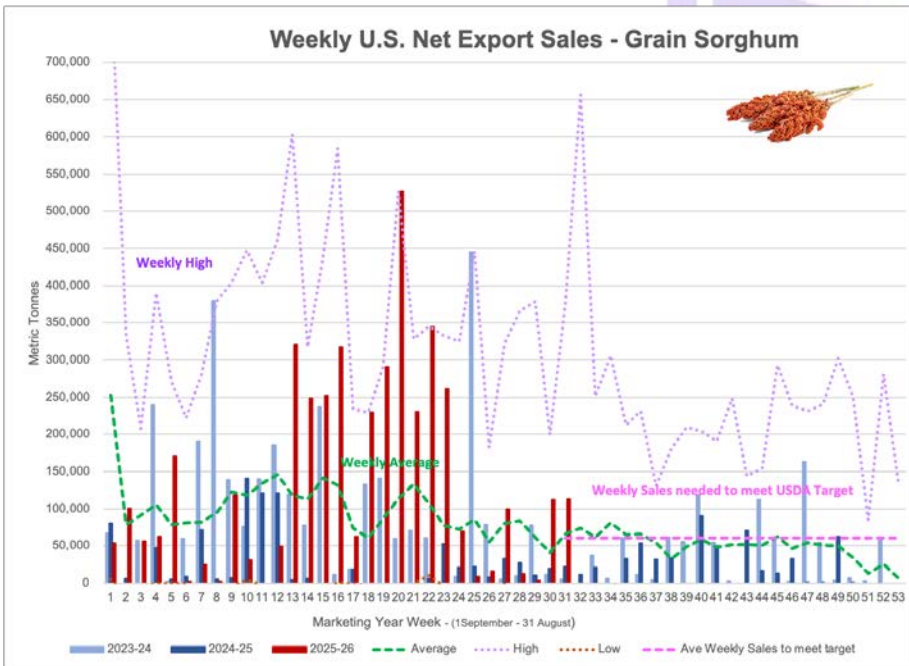
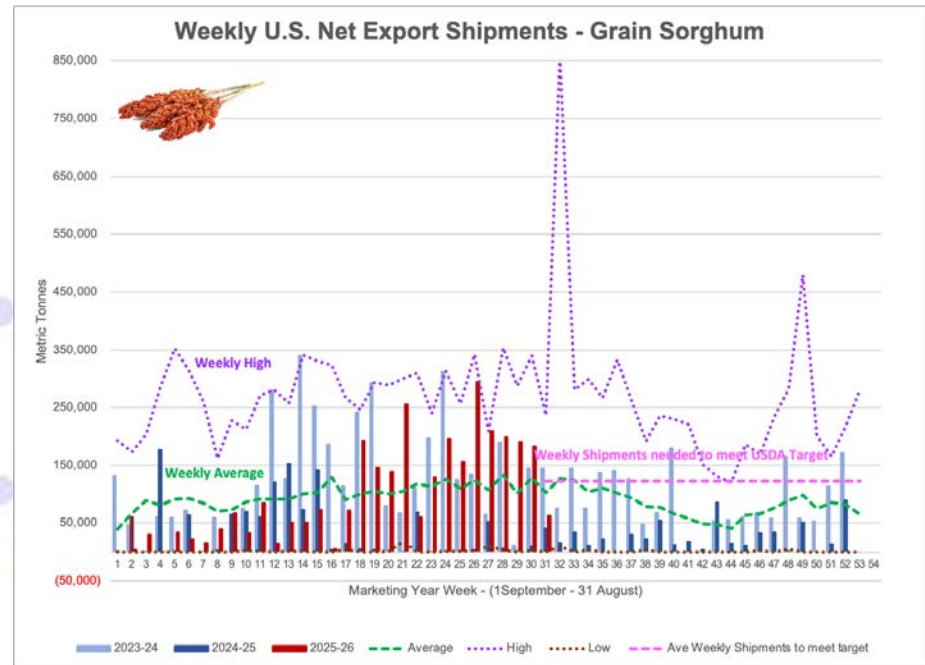
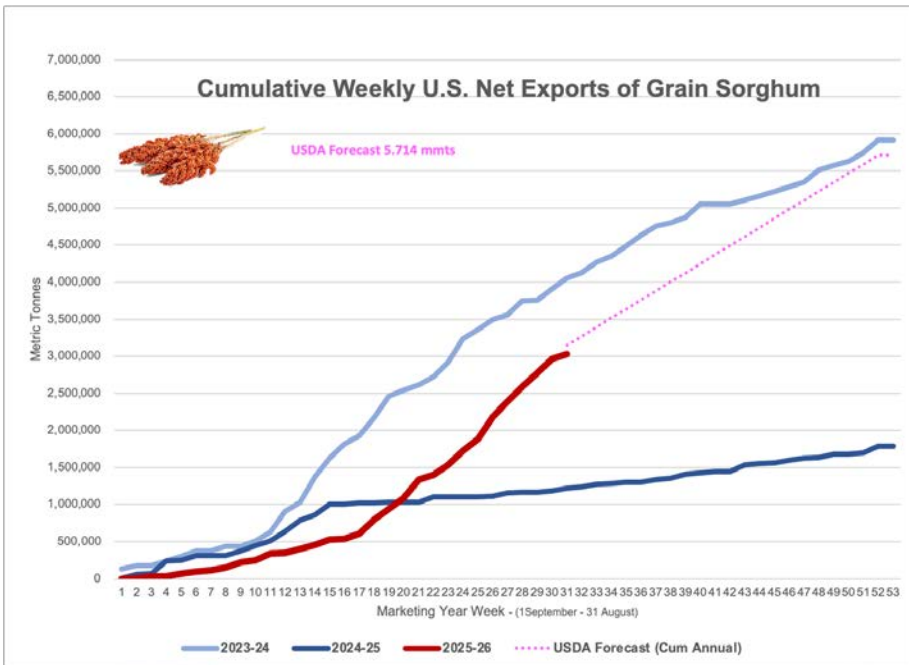
For the week ending 4/2/2026	Total commitments (1,000 mt)		% change current MY from last MY	Exports 3-year average 2022-24 (1,000 mt)
	YTD MY 2025/26	YTD MY 2024/25		
Mexico	21,206	19,282	10	19,839
Japan	12,107	9,199	32	10,478
Colombia	5,967	5,637	6	5,493
China	0	33	-100	3,461
Korea	6,872	4,043	70	3,127
Top 5 importers	39,280	34,151	15	39,272
Total U.S. corn export sales	71,386	54,660	31	54,276
% of YTD current month's export projection	85%	75%	-	-
Change from prior week	1,361	2,390	-	-
Top 5 importers' share of U.S. corn export sales	55%	62%	-	72%
USDA forecast March 2026	83,824	72,597	15	-
Corn use for ethanol USDA forecast, March 2026	142,240	138,075	3	-

Note: The top 5 importers are based on USDA, Foreign Agricultural Service (FAS) marketing year ranking reports for marketing year (MY) 2024/25 (September 1 – August 31). "Total commitments" = cumulative exports (shipped) + outstanding sales (unshipped), from FAS weekly export sales report, or export sales query. Total commitments' change (net sales) from prior week could include revisions from previous week's outstanding sales or accumulated sales. In rightmost column, "Exports" = accumulated exports (as defined in FAS marketing year ranking reports). mt = metric ton; yr. = year; avg. = average; YTD = year to date; "-" = not applicable.

Source: USDA, Foreign Agricultural Service.







OILSEED COMPLEX

➤ Soybean Export Shipments and Sales

Soybeans: Net sales of 295,400 MT for 2025/2026 were down 16 percent from the previous week and 34 percent from the prior 4-week average. Increases primarily for China (124,700 MT, including 121,000 MT switched from unknown destinations and decreases of 3,800 MT), Japan (104,800 MT, including 20,200 MT switched from unknown destinations and decreases of 200 MT), Egypt (47,000 MT), Mexico (27,500 MT, including decreases of 200 MT), and Indonesia (17,100 MT, including decreases of 100 MT), were offset by reductions for unknown destinations (77,400 MT) and Barbados (400 MT). Exports of 636,000 MT were down 7 percent from the previous week and 35 percent from the prior 4-week average. The destinations were primarily to China (430,700 MT), Mexico (65,400 MT), Indonesia (34,400 MT), Japan (33,900 MT), and Colombia (16,000 MT).

Soybean Meal Export Shipments and Sales

Soybean Cake and Meal: Net sales of 363,600 MT for 2025/2026 were down 4 percent from the previous week, but up 14 percent from the prior 4-week average. Increases primarily for the Philippines (153,300 MT, including 45,000 MT switched from unknown destinations), Mexico (66,100 MT, including decreases of 100 MT), the Dominican Republic (50,900 MT), Honduras (14,600 MT, including 4,800 MT switched from El Salvador and decreases of 11,500 MT), and Colombia (13,500 MT, including 6,000 MT switched from Ecuador, 6,000 MT switched from unknown destinations, and decreases of 7,100 MT), were offset by reductions for Japan (1,800 MT). Total net sales of 4,000 MT for 2026/2027 were for Canada. Exports of 458,800 MT were up 14 percent from the previous week and 19 percent from the prior 4-week average. The destinations were primarily to the Philippines (156,500 MT), Mexico (72,700 MT), Colombia (49,200 MT), Guatemala (31,400 MT), and Nicaragua (23,300 MT).

Table 16. Top 5 importers of U.S. soybeans

For the week ending 4/2/2026	Total commitments (1,000 mt)		% change current MY from last MY	Exports 3-year average 2022-24 (1,000 mt)
	YTD MY 2025/26	YTD MY 2024/25		
China	11,508	22,264	-48	26,078
Mexico	4,615	4,215	10	4,762
Japan	1,806	1,672	8	2,107
Egypt	4,273	2,650	61	2,098
Indonesia	1,811	1,424	27	1,997
Top 5 importers	24,014	32,225	-25	37,042
Total U.S. soybean export sales	37,905	45,787	-17	48,941
% of YTD current month's export projection	88%	89%	-	-
Change from prior week	295	172	-	-
Top 5 importers' share of U.S. soybean export sales	63%	70%	-	76%
USDA forecast, March 2026	42,864	51,220	-16	-

Note: The top 5 importers are based on USDA, Foreign Agricultural Service (FAS) marketing year ranking reports for marketing year (MY) 2024/25 (September 1 - August 31). "Total commitments" = cumulative exports (shipped) + outstanding sales (unshipped), from FAS weekly export sales report, or export sales query. Total commitments' change (net sales) from prior week could include revisions from previous week's outstanding sales or accumulated sales. In rightmost column, "Exports" = accumulated exports (as defined in FAS marketing year ranking reports). mt = metric ton; yr. = year; avg. = average; YTD = year to date; "-" = not applicable. Source: USDA, Foreign Agricultural Service.

➤ Soybean Oil Export Shipments and Sales

Soybean Oil: Net sales reductions of 1,600 MT for 2025/2026 were down noticeably from the previous week and from the prior 4-week average. Increases reported for Mexico (900 MT, including decreases of 200 MT), were more than offset by reductions for Colombia (2,400 MT) and Canada (100 MT). Exports of 1,500 MT--a marketing-year low--were down 78 percent from the previous week and 91 percent from the prior 4-week average. The destinations were to Mexico (1,100 MT) and Canada (400 MT). Source: USDA FAS - <https://apps.fas.usda.gov/esrqs/#/reports/weeklyexportsalesreportdetail>

