



# IGP Export Pace

## Wheat, Corn, Grain Sorghum, and Soybean Complex

6<sup>th</sup> February 2026  
Department of Grain & Food Science,  
Kansas State University

**KSU Ag Manager Link:** <https://www.agmanager.info/grain-marketing/publications/us-grain-exports-and-trade>

**KSU Agriculture Today Podcast Link:** <https://agtodayksu.libsyn.com/timeliness-of-corn-and-soybean-plantingworld-grain-supply-and-demand>

**IGP Market Information:** <http://www.dtnigp.com/index.cfm>

**USDA Transportation Report:** <https://www.ams.usda.gov/services/transportation-analysis/gtr>

**USDA FAS Historical Grain Shipments:** <https://apps.fas.usda.gov/export-sales/wkHistData.htm>,  
<https://apps.fas.usda.gov/export-sales/complete.htm>

### Contents

<b>U.S. EXPORT ACTIVITY</b> .....	1
➤ <b>Export Sales</b> .....	1
➤ <b>Export Inspections</b> .....	1
➤ <b>Vessel Loadings</b> .....	2
➤ <b>BARGE MOVEMENTS</b> .....	4
<b>CEREAL GRAINS</b> .....	5
➤ <b>Wheat Export Shipments and Sales</b> .....	5
<b>COARSE GRAINS</b> .....	7
<b>OILSEED COMPLEX</b> .....	11

- This summary based on reports for the 29<sup>th</sup> of January 2026
- Outstanding Export Sales (Unshipped Balances) on the 29<sup>th</sup> of Jan 2026
- Export Shipments in Current Marketing Year
- Daily Sales Reported for the 29<sup>th</sup> of January 2026

### U.S. EXPORT ACTIVITY

#### ➤ **Export Sales**

For the week ending the 29<sup>th</sup> of January, unshipped balances of corn, soybeans, and wheat for marketing year (MY) 2025/26 totaled 43.18 million metric tons (mmts), down 2% from last week and up 19% from the same time last year.

- Net wheat export sales were 0.37 mmts, down 33% from last week.
- Net corn export sales for MY 2025/26 were 1.04 mmts, down 37% from last week.
- Net soybean export sales were .44 mmts, down 47% from last week.

#### ➤ **Export Inspections**

GRAINS INSPECTED AND/OR WEIGHED FOR EXPORT  
REPORTED IN WEEK ENDING JAN 29, 2026  
-- METRIC TONS --

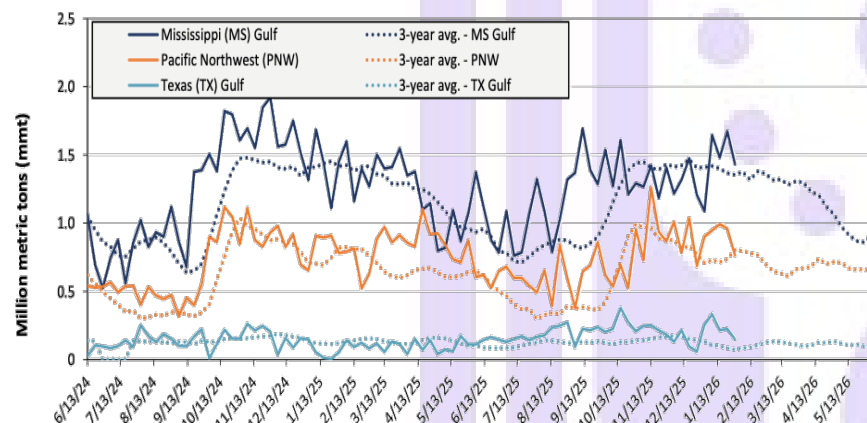
GRAIN	WEEK ENDING			CURRENT	PREVIOUS
	01/29/2026	01/22/2026	01/30/2025	MARKET YEAR TO DATE	MARKET YEAR TO DATE
BARLEY	122	147	0	6,313	9,207
CORN	1,136,352	1,547,064	1,260,984	32,611,083	21,761,284
FLAXSEED	0	24	0	408	264
MIXED	0	0	0	0	122
OATS	0	299	0	5,087	148
RYE	0	0	0	0	0
SORGHUM	53,546	126,017	73,223	1,359,784	1,458,074
SOYBEANS	1,310,559	1,336,311	1,140,431	21,991,461	34,192,882
SUNFLOWER	0	0	0	0	0
WHEAT	326,828	378,991	253,137	16,685,581	14,067,849
Total	2,827,407	3,388,853	2,727,775	72,659,717	71,489,830

CROP MARKETING YEARS BEGIN JUNE 1 FOR WHEAT, RYE, OATS, BARLEY AND FLAXSEED; SEPTEMBER 1 FOR CORN, SORGHUM, SOYBEANS AND SUNFLOWER SEEDS. INCLUDES WATERWAY SHIPMENTS TO CANADA.

Source: [https://www.ams.usda.gov/mnreports/wa\\_gr101.txt](https://www.ams.usda.gov/mnreports/wa_gr101.txt)

## ➤ Vessel Loadings

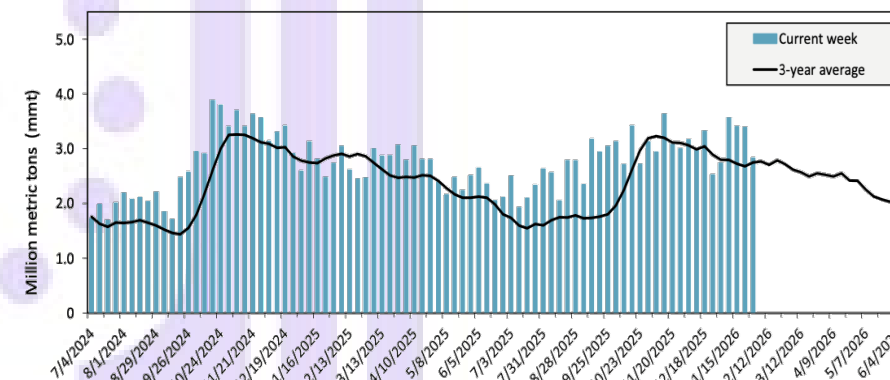
Figure 18. U.S. grain inspections for U.S. Gulf and PNW (wheat, corn, and soybeans)



## Ocean

For the week ending January 29, 29 oceangoing grain vessels were loaded in the Gulf—unchanged from the same period last year. Within the next 10 days (starting January 30), 61 vessels were expected to be loaded—45% more than the same period last year. As of January 29, the rate for shipping a metric ton (mt) of grain from the U.S. Gulf to Japan was \$51.75, up 2% from the previous week. The rate from the Pacific Northwest to Japan was \$29.00 per mt, up 2% from the previous week.

Figure 17. U.S. grain inspected for export (wheat, corn, and soybeans)



Note: 3-year average consists of 4-week running average.  
Source: USDA, Federal Grain Inspection Service.

### Week ending 01/01/26 inspections (mmt):

MS Gulf: 1.09

PNW: 0.83

TX Gulf: 0.26

Percent change from:	MS Gulf	TX Gulf	U.S. Gulf	PNW
Last week	down 10	up 346	up 6	up 21
Last year (same 7 days)	down 15	up 71	down 6	up 12
3-year average (4-week moving average)	down 23	up 94	down 13	up 17

Table 14. U.S. export balances and cumulative exports (1,000 metric tons)

Grain Exports		Wheat						Corn	Soybeans	Total
		Hard red winter (HRW)	Soft red winter (SRW)	Hard red spring (HRS)	Soft white wheat (SWW)	Durum	All wheat			
Current unshipped (outstanding) export sales	For the week ending 1/29/2026	1,521	716	1,364	1,520	181	5,302	25,514	12,361	43,176
	This week year ago	1,151	760	1,544	1,388	132	4,975	22,482	8,876	36,333
	Last 4 wks. as % of same period 2024/25	128	95	87	108	103	104	111	147	119
Current shipped (cumulative) exports sales	2025/26 YTD	6,287	2,179	4,216	3,490	348	16,521	33,222	21,930	71,672
	2024/25YTD	3,230	2,017	4,424	3,681	227	13,580	22,285	34,010	69,875
	YTD 2025/26 as % of 2024/25	195	108	95	95	154	122	149	64	103
	Total 2024/25	5,377	3,106	6,560	5,730	335	21,107	69,081	50,106	140,295
	Total 2023/24	3,535	4,260	6,314	3,906	526	18,540	54,277	44,510	117,328

Note: The marketing year for wheat is June 1 to May 31 and, for corn and soybeans, September 1 to August 31. YTD = year-to-date; wks. = weeks.  
Source: USDA, Foreign Agricultural Service.

## Barge

For the week ending January 31, barged grain movements totaled 189,300 tons. This was 67% less than the previous week and 69% less than the same week last year.

For the week ending January 31, 122 barges moved down river, 287 fewer than the previous week. There were 909 grain barges unloaded in the New Orleans Region, 15% more than the previous week.

## Rail

U.S. Class I railroads originated 27,850 grain carloads during the week ending January 24. This was a 13-percent decrease from the previous week, 26% more than last year, and 14% more than the 3-year average.

Average February shuttle secondary railcar bids/offers (per car) were \$550 above tariff for the week ending January 29. This was \$200 less than last week and \$553 more than this week last year. Average non-shuttle secondary railcar bids/offers per car were \$17 above tariff. This was \$14 more than last week and \$321 lower than this week last year.

Table 18. Grain inspections for export by U.S. port region (1,000 metric tons)

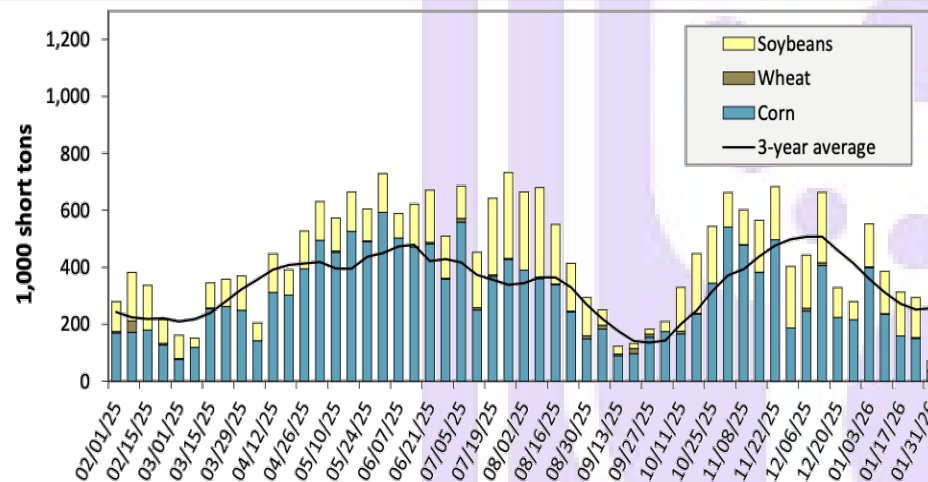
Port regions	Commodity	For the week ending 01/29/2026	Previous week*	Current week as % of previous	2026 YTD*	2025 YTD*	2026 YTD as % of 2025 YTD	Last 4-weeks as % of:		2025 total*
								Last year	Prior 3-yr. avg.	
Pacific Northwest	Corn	386	385	100	1,780	1,748	102	102	168	24,214
	Soybeans	201	340	59	1,152	853	135	160	95	2,957
	Wheat	178	234	76	732	815	90	90	85	12,271
	All grain	765	960	80	3,665	3,485	105	109	114	39,721
Mississippi Gulf	Corn	528	799	66	2,597	2,701	96	96	139	37,115
	Soybeans	874	862	101	3,519	2,912	121	124	104	23,350
	Wheat	30	12	258	197	220	89	90	90	3,980
	All grain	1,433	1,673	86	6,313	5,834	108	109	115	64,484
Texas Gulf	Corn	0	35	0	59	20	300	300	206	590
	Soybeans	35	0	n/a	87	0	n/a	n/a	532	1,431
	Wheat	61	67	91	300	94	321	321	312	4,690
	All grain	148	225	66	973	125	780	739	318	7,774
Interior	Corn	222	294	75	1,198	803	149	149	144	15,546
	Soybeans	94	126	75	549	544	101	101	80	7,685
	Wheat	57	66	86	191	198	96	95	94	3,063
	All grain	375	491	76	1,961	1,560	126	125	113	26,819
Great Lakes	Corn	0	0	n/a	0	0	n/a	n/a	n/a	414
	Soybeans	0	0	n/a	0	0	n/a	n/a	0	63
	Wheat	0	0	n/a	11	11	103	103	128	434
	All grain	0	0	n/a	11	11	103	103	118	911
Atlantic	Corn	0	33	0	114	34	335	335	511	607
	Soybeans	57	8	754	137	166	83	83	56	1,085
	Wheat	0	0	n/a	0	0	n/a	n/a	0	81
	All grain	57	41	140	251	200	126	126	93	1,773
All Regions	Corn	1,136	1,547	73	5,749	5,306	108	108	151	78,486
	Soybeans	1,311	1,336	98	5,588	4,579	122	128	100	36,824
	Wheat	327	379	86	1,431	1,337	107	107	103	24,519
	All grain	2,827	3,389	83	13,317	11,318	118	119	120	141,735

\*Note: Data include revisions from prior weeks; "All grain" includes corn, soybeans, wheat, sorghum, oats, barley, rye, sunflower, flaxseed, and mixed grains; "All regions" includes listed regions and other minor regions not listed; YTD = year-to-date; n/a = not available or no change. A "-" in the table indicates a percentage change with a near-zero denominator for the period.

Source: USDA, Federal Grain Inspection Service.

## ➤ BARGE MOVEMENTS

**Figure 12. Barge movements on the Mississippi River (Locks 27-Granite City, IL)**



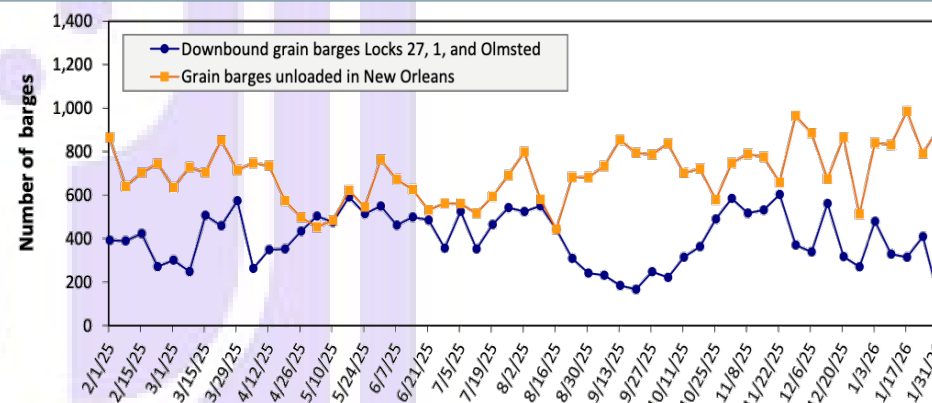
Note: The 3-year average is a 4-week moving average.

Source: U.S. Army Corps of Engineers.

- For the week ending the 10<sup>th</sup> of January, barged grain movements totaled 189,300 tons. This was 67% less than the previous week and 69% less than the same week last year.

- For the week ending the 31<sup>st</sup> of January, 122 grain barges moved down river—287 fewer than last week.
- There were 909 grain barges unloaded in the New Orleans region, 15% more than last week.

**Figure 14. Grain barges for export in New Orleans region**



Note: Olmsted = Olmsted Locks and Dam.

Source: U.S. Army Corps of Engineers and USDA, Agricultural Marketing Service.

**Table 10. Barged grain movements (1,000 tons)**

For the week ending 01/31/2026	Corn	Wheat	Soybeans	Other	Total
Mississippi River (Rock Island, IL (L15))	0	0	0	0	0
Mississippi River (Winfield, MO (L25))	20	0	0	0	20
Mississippi River (Alton, IL (L26))	34	0	25	0	59
Mississippi River (Granite City, IL (L27))	38	0	33	0	71
Illinois River (La Grange)	24	0	46	0	70
Ohio River (Olmsted)	48	2	32	0	82
Arkansas River (L1)	0	10	26	0	36
Weekly total - 2026	87	12	91	0	189
Weekly total - 2025	374	18	225	0	617
2026 YTD	878	61	787	7	1,732
2025 YTD	1,406	49	1,380	18	2,852
2026 as % of 2025 YTD	62	125	57	37	61
Last 4 weeks as % of 2025	81	144	78	37	81
Total 2025	20,015	1,259	11,322	166	32,761

Note: "Other" refers to oats, barley, sorghum, and rye. Total may not add up due to rounding. YTD = year to date. Weekly total, YTD, and calendar year total include Mississippi River lock 27, Ohio River Olmsted lock, and Arkansas Lock 1. "L" (as in "L15") refers to a lock, locks, or lock and dam facility.

Source: U.S. Army Corps of Engineers.



## CEREAL GRAINS

### ➤ Wheat Export Shipments and Sales

**Wheat:** Net sales of 373,900 metric tons (mts) for 2025/2026 were down 33% from the previous week, but up 3% from the prior 4-week average. Increases primarily for the Philippines (90,900 mts, including decreases of 2,100 mts), Taiwan (89,200 mts), Mexico (67,900 mts, including decreases of 100 mts), China (65,000 mts switched from unknown destinations), and Italy (59,100 mts), were offset by reductions for unknown destinations (123,000 mts) and Honduras (11,100 mts). Net sales of 41,000 mts for 2026/2027 were reported for Japan (32,000 mts) and Mexico (9,000 mts).

Exports of 403,800 mts were up 7% from the previous week and 32% from the prior 4-week average. The destinations were primarily to Mexico (57,600 mts), Taiwan (55,700 mts), South Korea (55,000 mts), the Philippines (50,900 mts), and Vietnam (41,100 mts).

Source: USDA FAS - <https://apps.fas.usda.gov/export-sales/highlite.htm>

**Rice:** Net sales of 21,600 mts for 2025/2026 were down 64% from the previous week and 56% from the prior 4-week average. Increases primarily for Haiti (13,500 mts), Guam (10,300 mts, including 11,000 mts switched from unknown destinations and decreases of 700 mts), Israel (3,000 mts), Mexico (1,500 mts, including decreases of 300 mts), and Albania (1,500 mts), were offset by reductions for unknown destinations (11,000 mts). Exports of 43,900 mts were down 47% from the previous week and 23% from the prior 4-week average. The destinations were primarily to Japan (13,700 mts), Guam (10,300 mts), Mexico (9,100 mts), Honduras (5,300 mts), and Taiwan (2,400 mts).

Source: USDA FAS - <https://apps.fas.usda.gov/export-sales/highlite.htm>

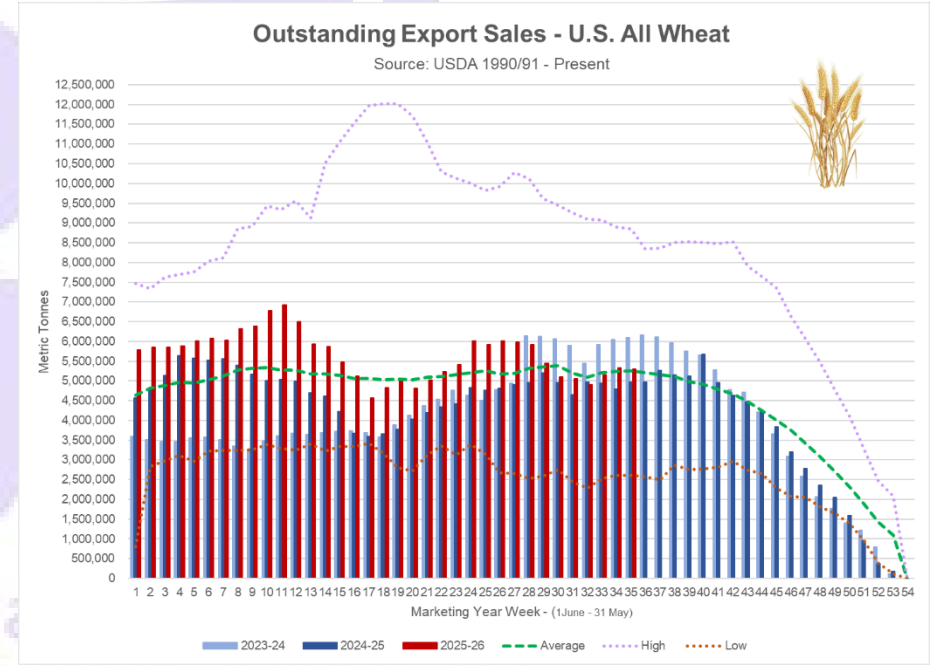
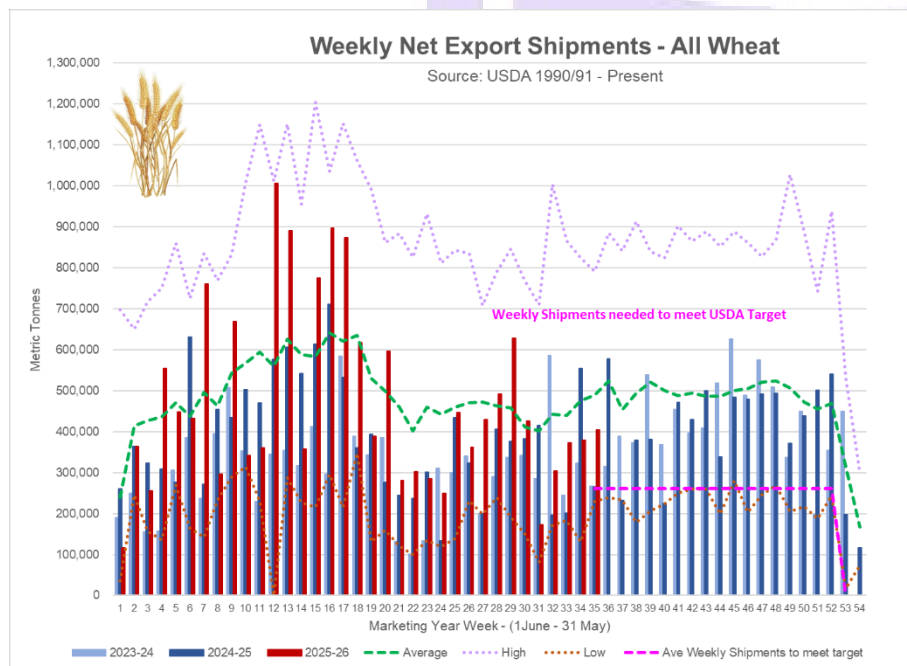
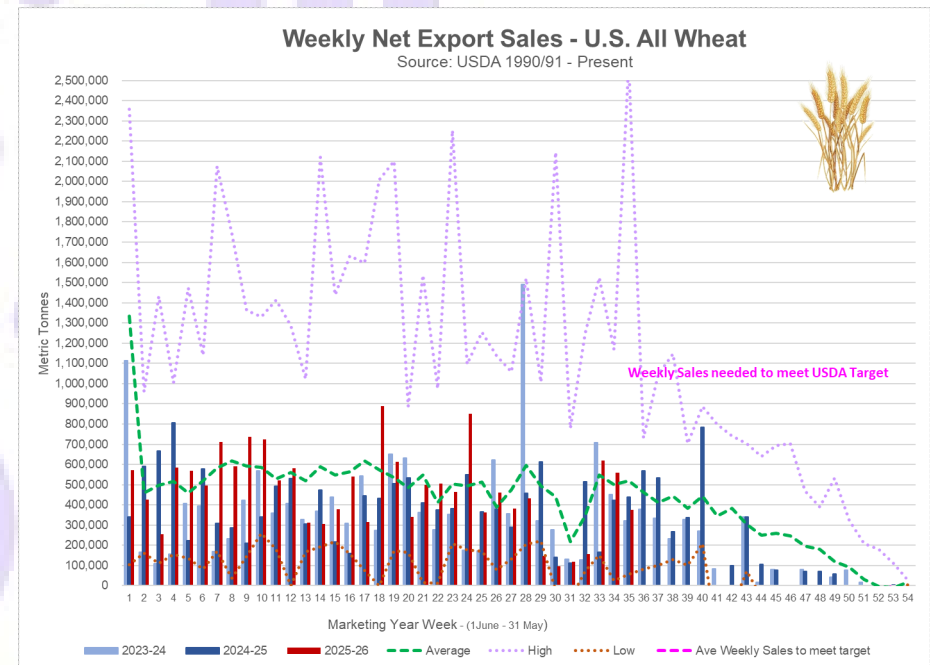
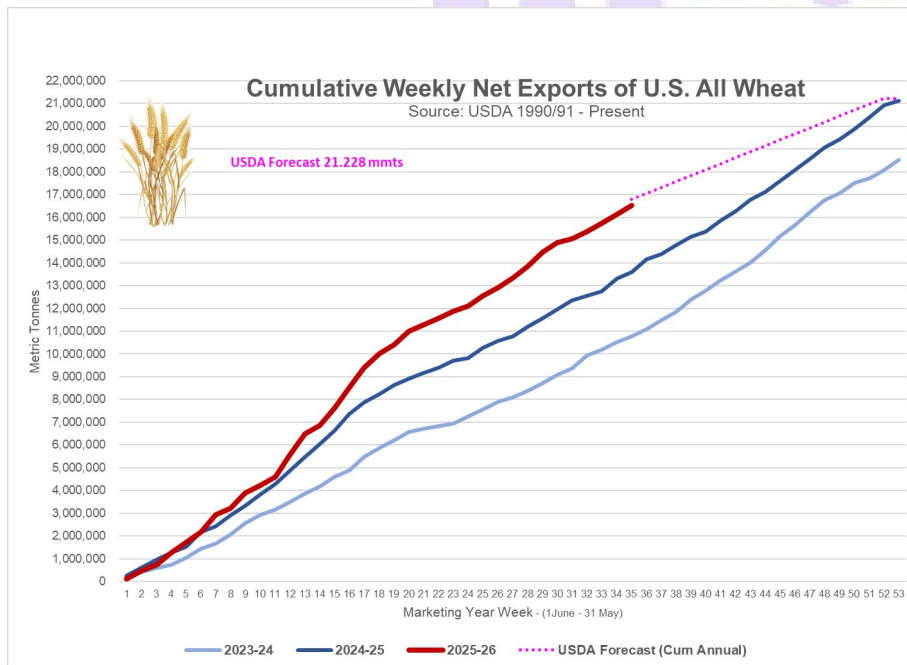
Table 17. Top 10 importers of all U.S. wheat

For the week ending 1/29/2026	Total commitments (1,000 mt)		% change current MY from last MY	Exports 3-year average 2022-24 (1,000 mt)
	YTD MY 2025/26	YTD MY 2024/25		
Mexico	3,674	3,427	7	3,358
Philippines	2,522	2,341	8	2,473
Japan	1,880	1,733	8	2,045
China	264	139	90	1,137
Korea	1,838	2,038	-10	1,674
Taiwan	873	849	3	935
Thailand	656	772	-15	667
Nigeria	1,323	430	208	629
Indonesia	996	641	55	518
Colombia	649	365	78	489
Top 10 importers	14,675	12,736	15	13,926
Total U.S. wheat export sales	21,822	18,555	18	19,135
% of YTD current month's export projection	89%	83%	-	-
Change from prior week	374	439	-	-
Top 10 importers' share of U.S. wheat export sales	67%	69%	-	73%
USDA forecast, January 2026	24,494	22,480	9	-

Note: The top 10 importers are based on USDA, Foreign Agricultural Service (FAS) marketing year ranking reports for marketing year (MY) 2024/25 (June 1 – May 31). "Total commitments" = cumulative exports (shipped) + outstanding sales (unshipped), from FAS weekly export sales report, or export sales query. Total commitments' change (net sales) from prior week could include revisions from previous week's outstanding sales or accumulated sales. In rightmost column, "Exports" = accumulated exports (as defined in FAS marketing year ranking reports). mt = metric ton; yr. = year; avg. = average; YTD = year to date; "-" = not applicable.

Source: USDA, Foreign Agricultural Service.

GTR 02-05-26



## COARSE GRAINS

**Corn:** Net sales of 1,041,200 mts for 2025/2026 were down 37% from the previous week and 42% from the prior 4-week average. Increases primarily for Mexico (247,600 mts, including decreases of 13,400 mts), Japan (246,800 mts, including 125,000 mts switched from unknown destinations and decreases of 12,600 mts), South Korea (125,800 mts, including 60,000 mts - late), Panama (88,500 mts), and Indonesia (68,000 mts switched from Vietnam), were offset by reductions for Vietnam (64,200 mts) and unknown destinations (22,600 mts). Net sales of 16,400 mts for 2026/2027 were reported for Japan (13,900 mts) and unknown destinations (2,500 mts).

Exports of 1,147,000 mts were down 31% from the previous week and 24% from the prior 4-week average. The destinations were primarily to Japan (381,800 mts), Mexico (317,000 mts), Colombia (165,500 mts), South Korea (73,000 mts), and Spain (60,400 mts).

**Table 15. Top 5 importers of U.S. corn**

For the week ending 1/29/2026	Total commitments (1,000 mt)		% change current MY from last MY	Exports 3-year average 2022-24 (1,000 mt)
	YTD MY 2025/26	YTD MY 2024/25		
Mexico	18,685	16,422	14	19,839
Japan	9,120	6,404	42	10,478
Colombia	4,514	4,289	5	5,493
China	0	32	-100	3,461
Korea	5,490	2,372	131	3,127
Top 5 importers	32,320	27,147	19	39,272
Total U.S. corn export sales	58,735	44,767	31	54,276
% of YTD current month's export projection	72%	62%	-	-
Change from prior week	1,041	1,477	-	-
Top 5 importers' share of U.S. corn export sales	55%	61%	-	72%
USDA forecast January 2026	81,284	72,597	12	-
Corn use for ethanol USDA forecast, January 2026	142,240	138,075	3	-

Note: The top 5 importers are based on USDA, Foreign Agricultural Service (FAS) marketing year ranking reports for marketing year (MY) 2024/25 (September 1 – August 31). "Total commitments" = cumulative exports (shipped) + outstanding sales (unshipped), from FAS weekly export sales report, or export sales query. Total commitments' change (net sales) from prior week could include revisions from previous week's outstanding sales or accumulated sales. In rightmost column, "Exports" = accumulated exports (as defined in FAS marketing year ranking reports). mt = metric ton; yr. = year; avg. = average; YTD = year to date; "-" = not applicable.

Source: USDA, Foreign Agricultural Service.

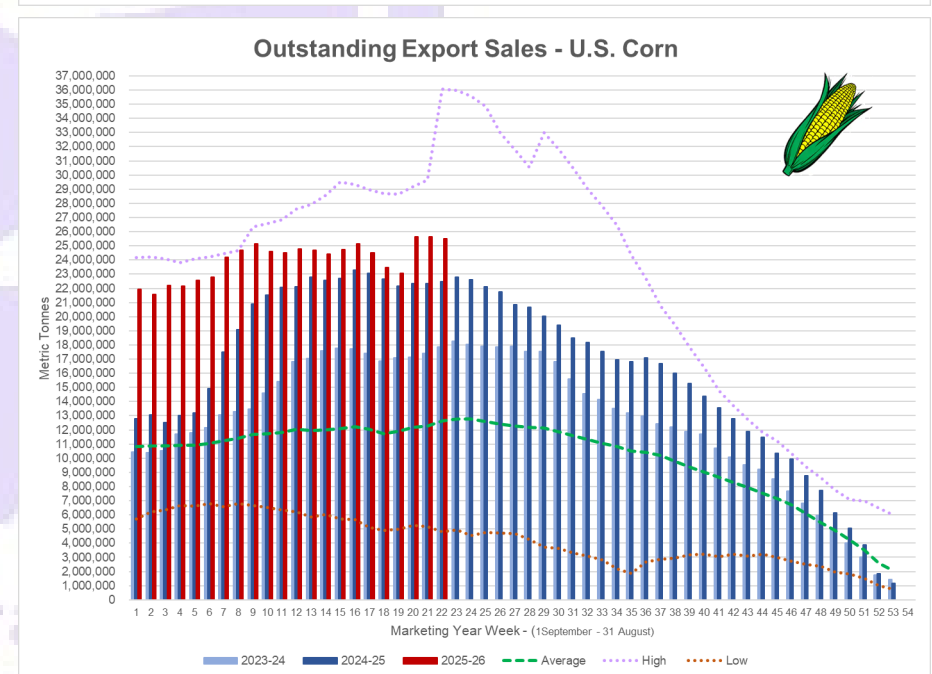
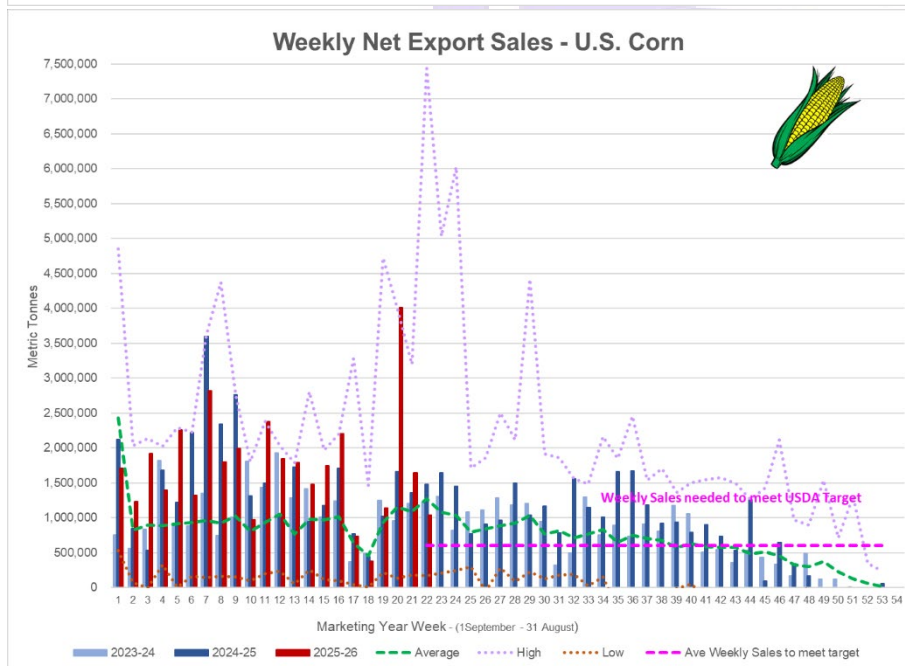
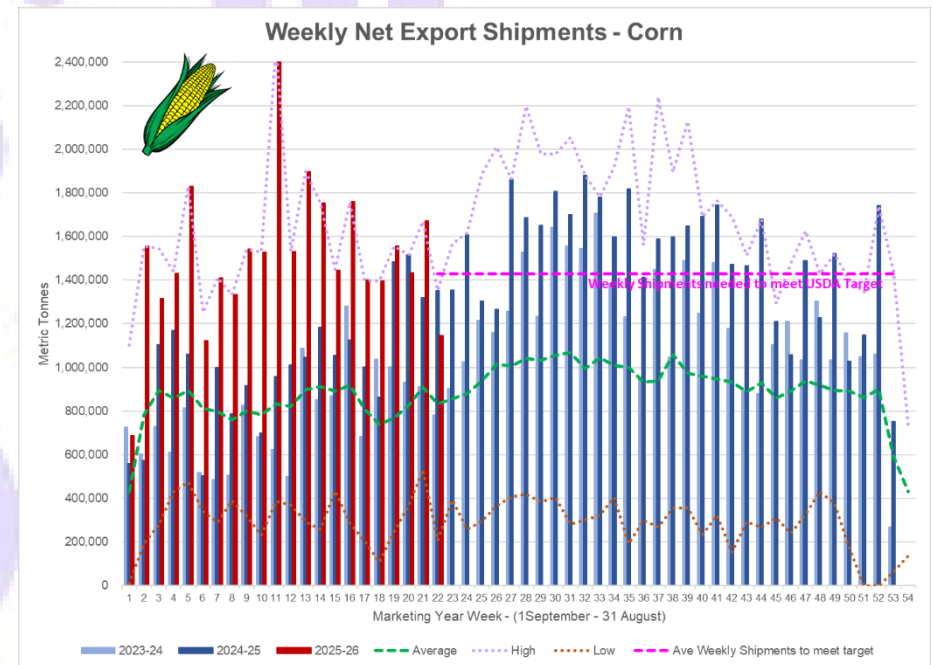
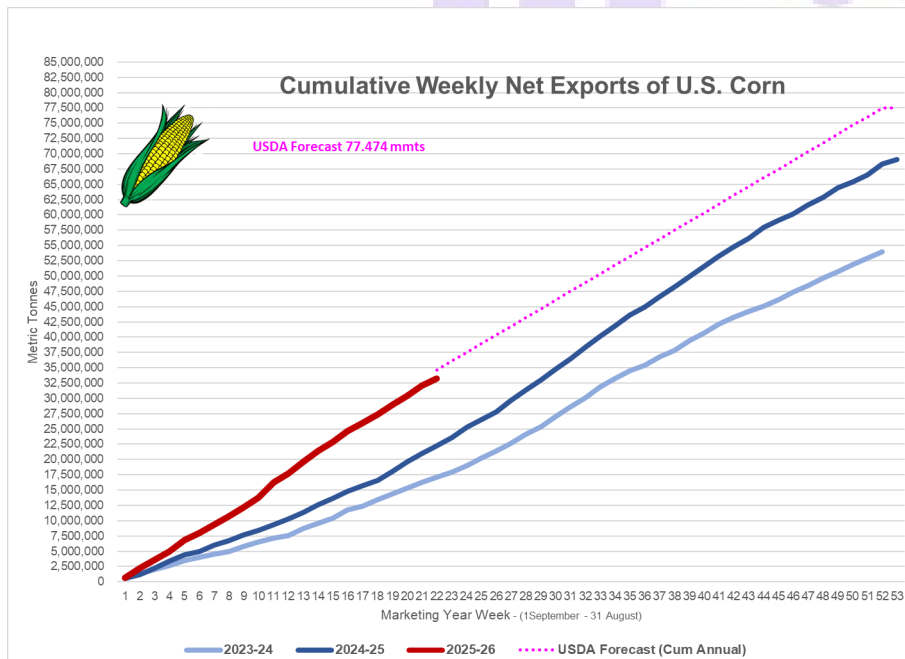
**Barley:** No net sales for 2025/2026 were reported for the week.

Exports of 500 mts were to Canada.

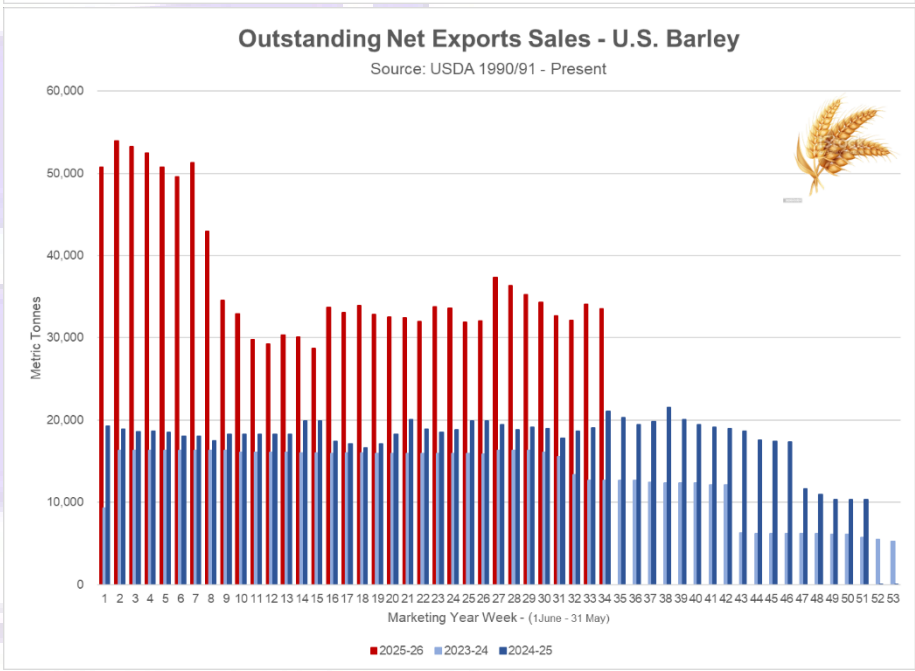
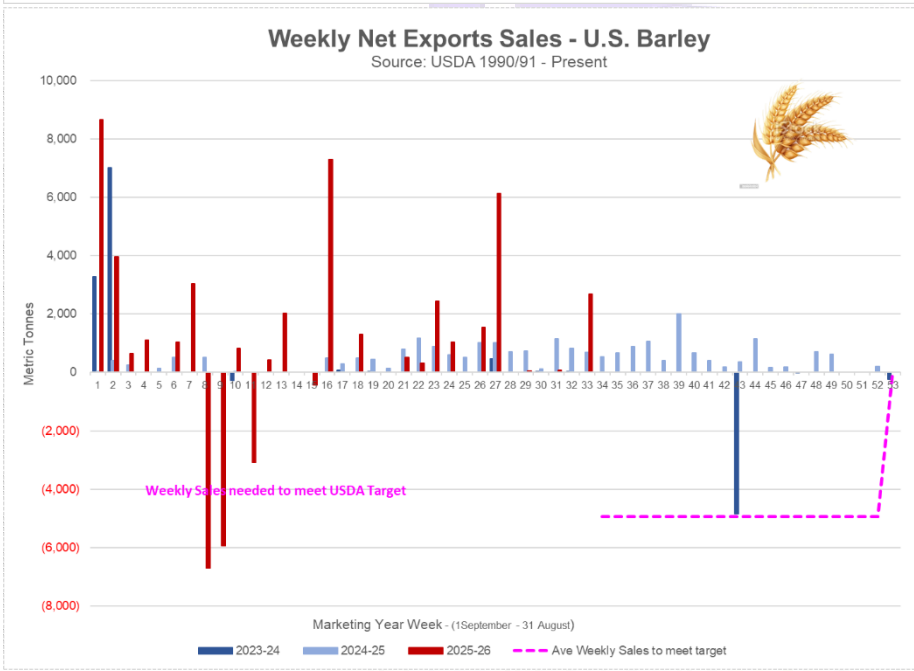
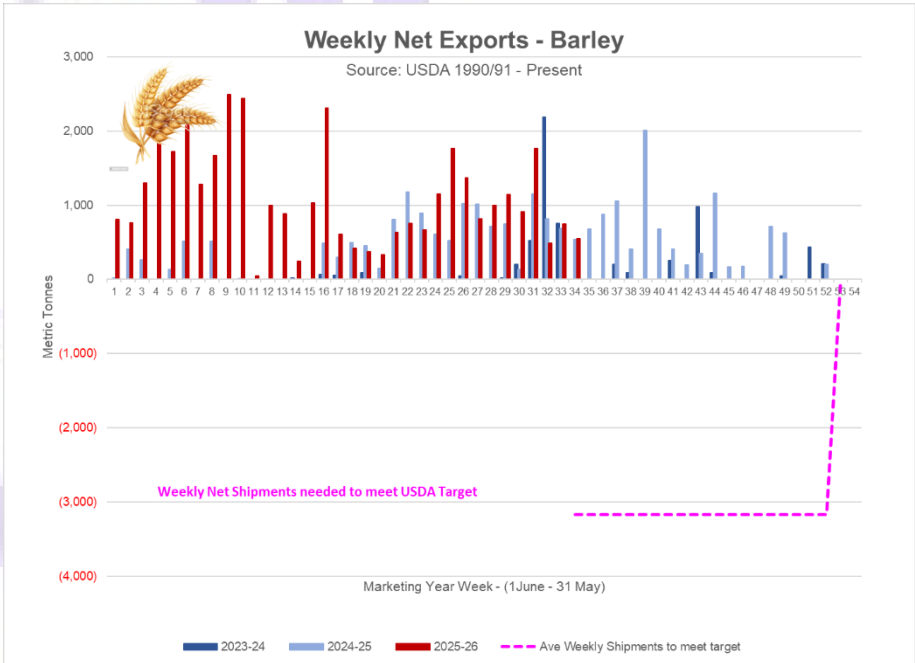
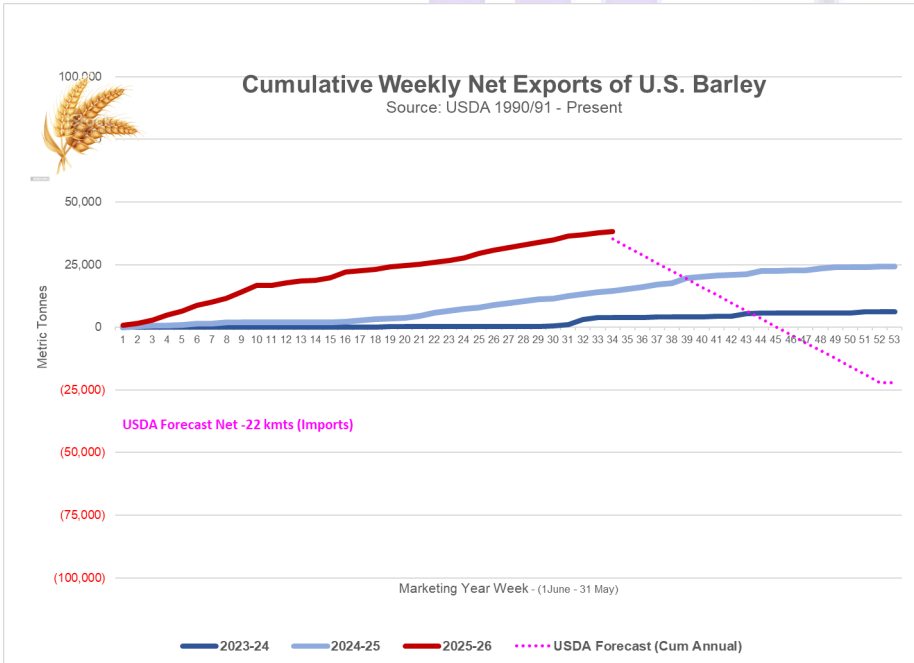
**Sorghum:** Net sales of 344,900 mts for 2025/2026 were up 49% from the previous week and 8% from the prior 4-week average. Increases were reported for unknown destinations (331,000 mts), China (10,800 mts, including decreases of 1,200 mts), and Mexico (3,100 mts).

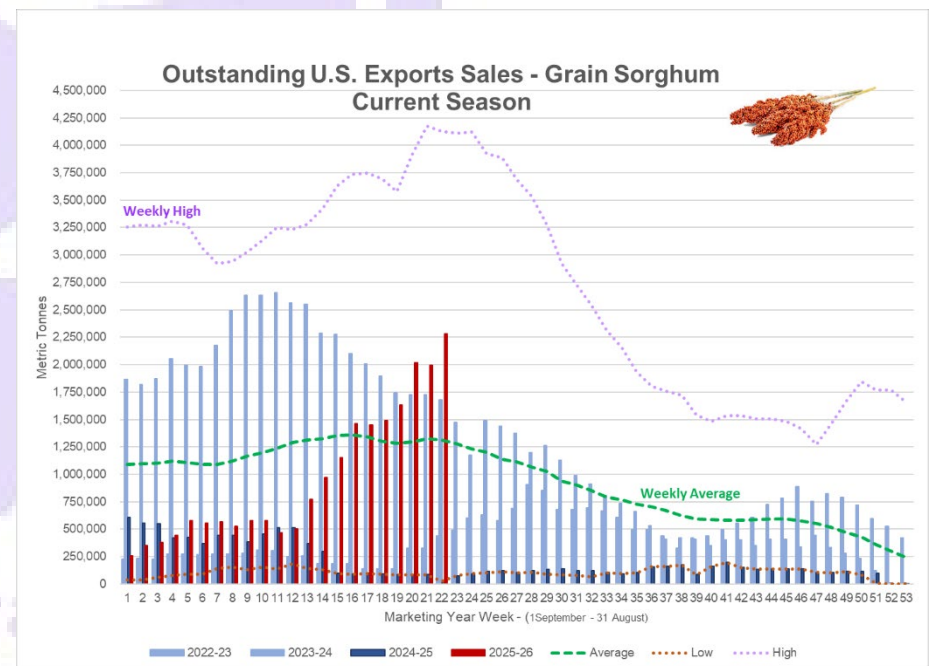
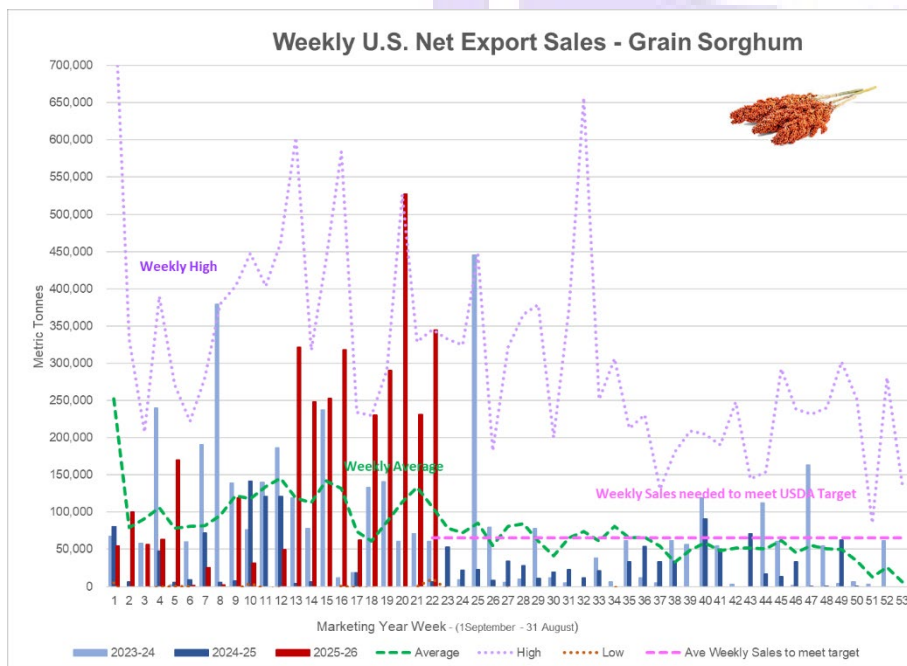
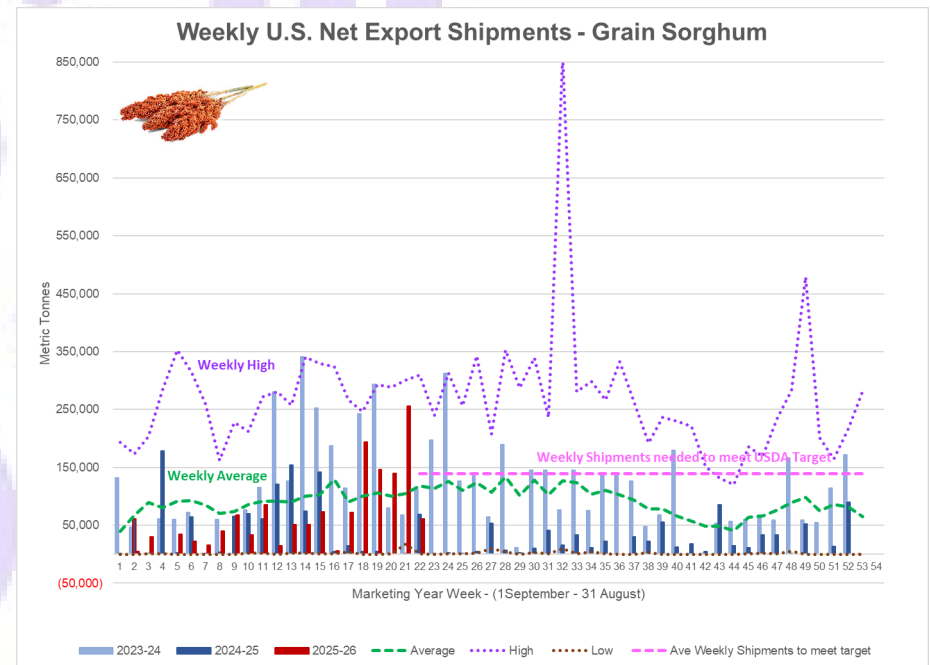
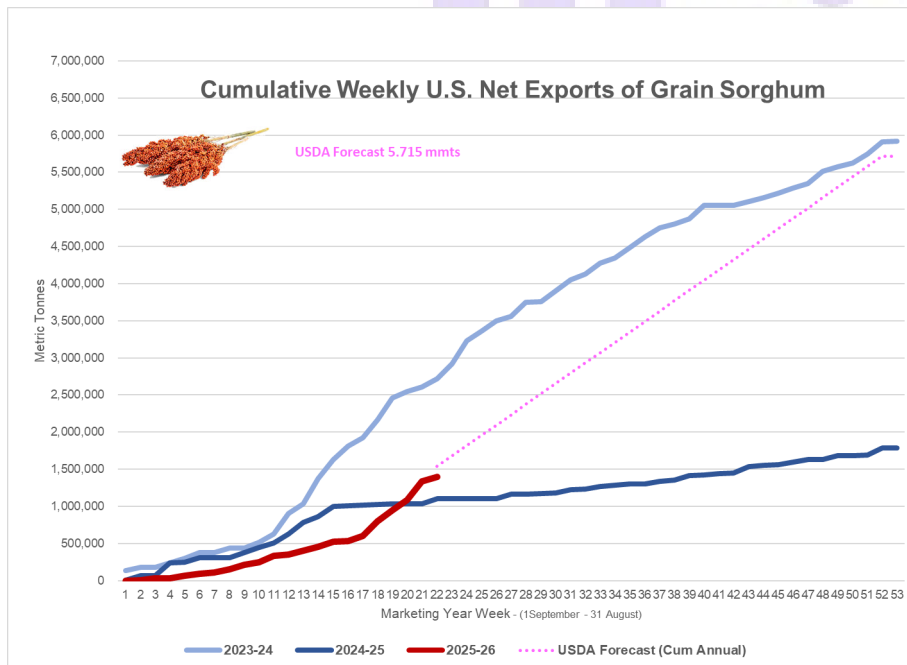
Exports of 60,700 mts were down 76% from the previous week and 67% from the prior 4-week average. The destinations were to China (56,600 mts), Mexico (3,100 mts), and Japan (1,000 mts).

Source: USDA FAS - <https://apps.fas.usda.gov/export-sales/highlite.htm>









## OILSEED COMPLEX

**Soybeans:** Net sales of 436,900 mts for 2025/2026--a marketing-year low--were down 47% from the previous week and 72% from the prior 4-week average. Increases primarily for China (233,000 mts, including 134,000 mts switched from unknown destinations and decreases of 1,300 mts), Egypt (104,700 mts, including 52,500 mts switched from unknown destinations and decreases of 2,800 mts), Mexico (81,000 mts, including 47,500 mts switched from unknown destinations and decreases of 800 mts), the Netherlands (68,500 mts, including 57,000 mts switched from unknown destinations), and Vietnam (63,800 mts, including 55,000 mts switched from unknown destinations), were offset by reductions for unknown destinations (285,400 mts) and Pakistan (200 mts). Total net sales of 400 mts for 2026/2027 were for Japan.

Exports of 1,387,700 mts were up 9% from the previous and 4% from the prior 4-week average. The destinations were primarily to China (809,000 mts), Mexico (148,900 mts), Egypt (104,700 mts), Vietnam (69,800 mts), and Pakistan (69,800 mts).

**Exports for Own Account:** For 2025/2026, the current exports for own account outstanding balance of 1,800 mts, all Taiwan.

**Soybean Cake and Meal:** Net sales of 380,300 mts for 2025/2026 were down 18% from the previous week, but up 11% from the prior 4-week average. Increases primarily for the Philippines (155,800 mts), Canada (36,200 mts), Panama (34,200 mts), Mexico (30,600 mts), and Saudi Arabia (30,000 mts switched from Morocco), were offset by reductions for Japan (15,500 mts) and Morocco (10,000 mts).

Exports of 307,800 mts were down 7% from the previous week and 24% from the prior 4-week average. The destinations were primarily to Poland (66,000 mts), Colombia (56,300 mts), the Philippines (51,600 mts), Mexico (28,400 mts), and Japan (27,900 mts).

**Table 16. Top 5 importers of U.S. soybeans**

For the week ending 1/29/2026	Total commitments (1,000 mt)		% change current MY from last MY	Exports 3-year average 2022-24 (1,000 mt)
	YTD MY 2025/26	YTD MY 2024/25		
China	9,887	20,425	-52	26,078
Mexico	4,018	3,620	11	4,762
Japan	1,367	1,396	-2	2,107
Egypt	3,322	1,927	72	2,098
Indonesia	1,323	1,084	22	1,997
Top 5 importers	19,915	28,451	-30	37,042
Total U.S. soybean export sales	34,291	42,886	-20	48,941
% of YTD current month's export projection	80%	84%	-	-
Change from prior week	437	330	-	-
Top 5 importers' share of U.S. soybean export sales	58%	66%	-	76%
USDA forecast, January 2026	42,864	51,220	-16	-

Note: The top 5 importers are based on USDA, Foreign Agricultural Service (FAS) marketing year ranking reports for marketing year (MY) 2024/25 (September 1 – August 31). "Total commitments" = cumulative exports (shipped) + outstanding sales (unshipped), from FAS weekly export sales report, or export sales query. Total commitments' change (net sales) from prior week could include revisions from previous week's outstanding sales or accumulated sales. In rightmost column, "Exports" = accumulated exports (as defined in FAS marketing year ranking reports). mt = metric ton; yr. = year; avg. = average; YTD = year to date; "-" = not applicable.

Source: USDA, Foreign Agricultural Service.

**Soybean Oil:** Net sales of 1,000 mts for 2025/2026 were down 96% from the previous week and 95% from the prior 4-week average. Increases primarily for unknown destinations (7,500 mts), Venezuela (6,000 mts), Mexico (2,300 mts), the Dominican Republic (1,700 mts), and Canada (700 mts), were offset by reductions for Guatemala (18,000 mts).

Exports of 17,900 mts were down 32% from the previous week, but up 9% from the prior 4-week average. The destinations were primarily to Venezuela (5,500 mts), Mexico (4,900 mts), Jamaica (3,500 mts), Guatemala (2,500 mts), and Honduras (800 mts). Source: USDA FAS - <https://apps.fas.usda.gov/export-sales/highlite.htm>

