

Livestock/Poultry Outlook

Dr. Glynn Tonsor, Kansas State Univ.

JANUARY 9-14, 2015 • SAN DIEGO
AFBF ANNUAL CONVENTION & IDEAG TRADE SHOW

TRADITION,
PERSEVERANCE,
VISION:

FARM
BUREAU
PROUD

CONVENTION PROGRAM

Feedstuffs & Forage Situation

BULLISH (\$\$\$)

FOR

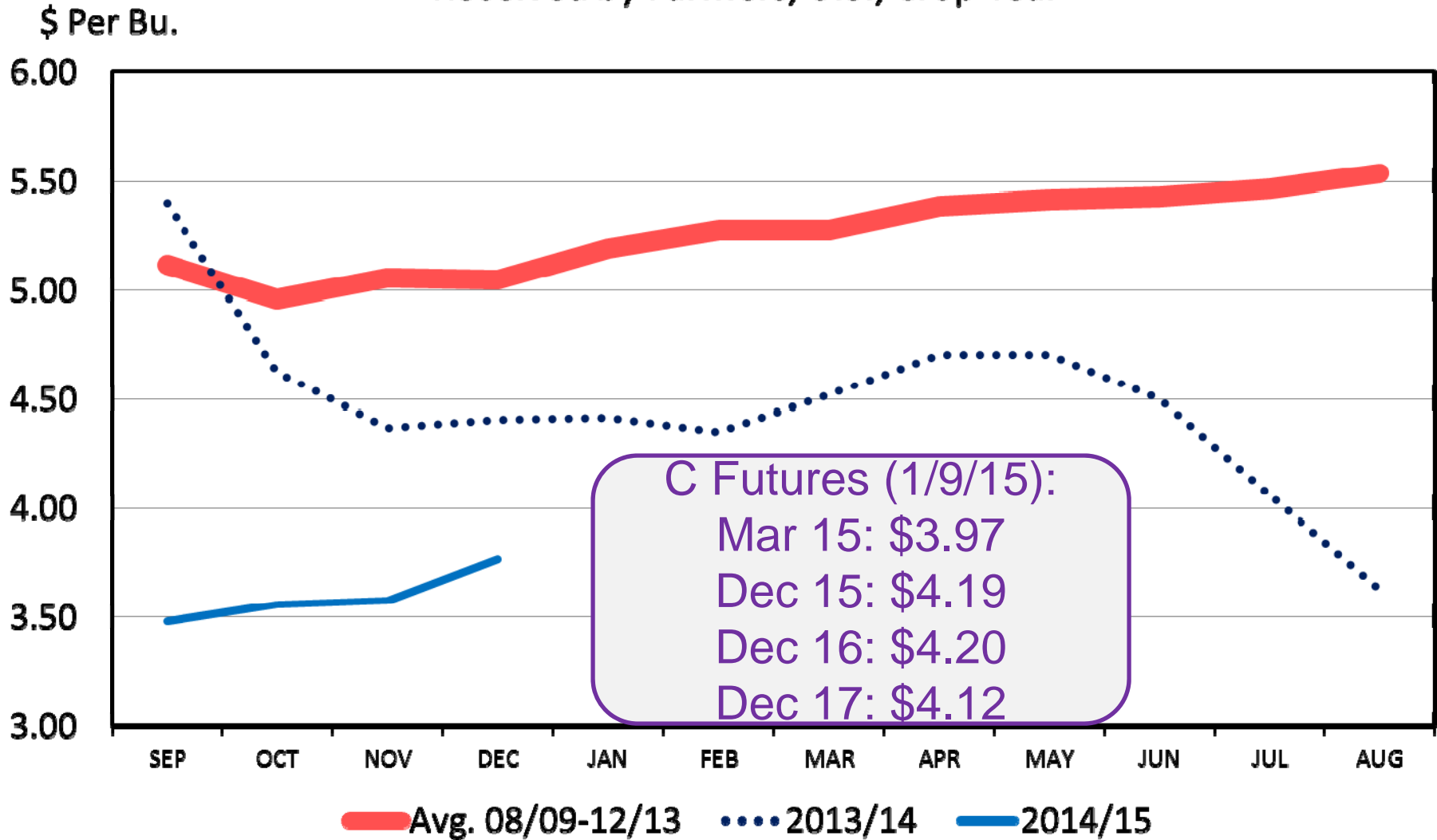
LIVESTOCK

INDUSTRY



CORN – MONTHLY AVERAGE PRICE

Received by Farmers, U.S., Crop Year



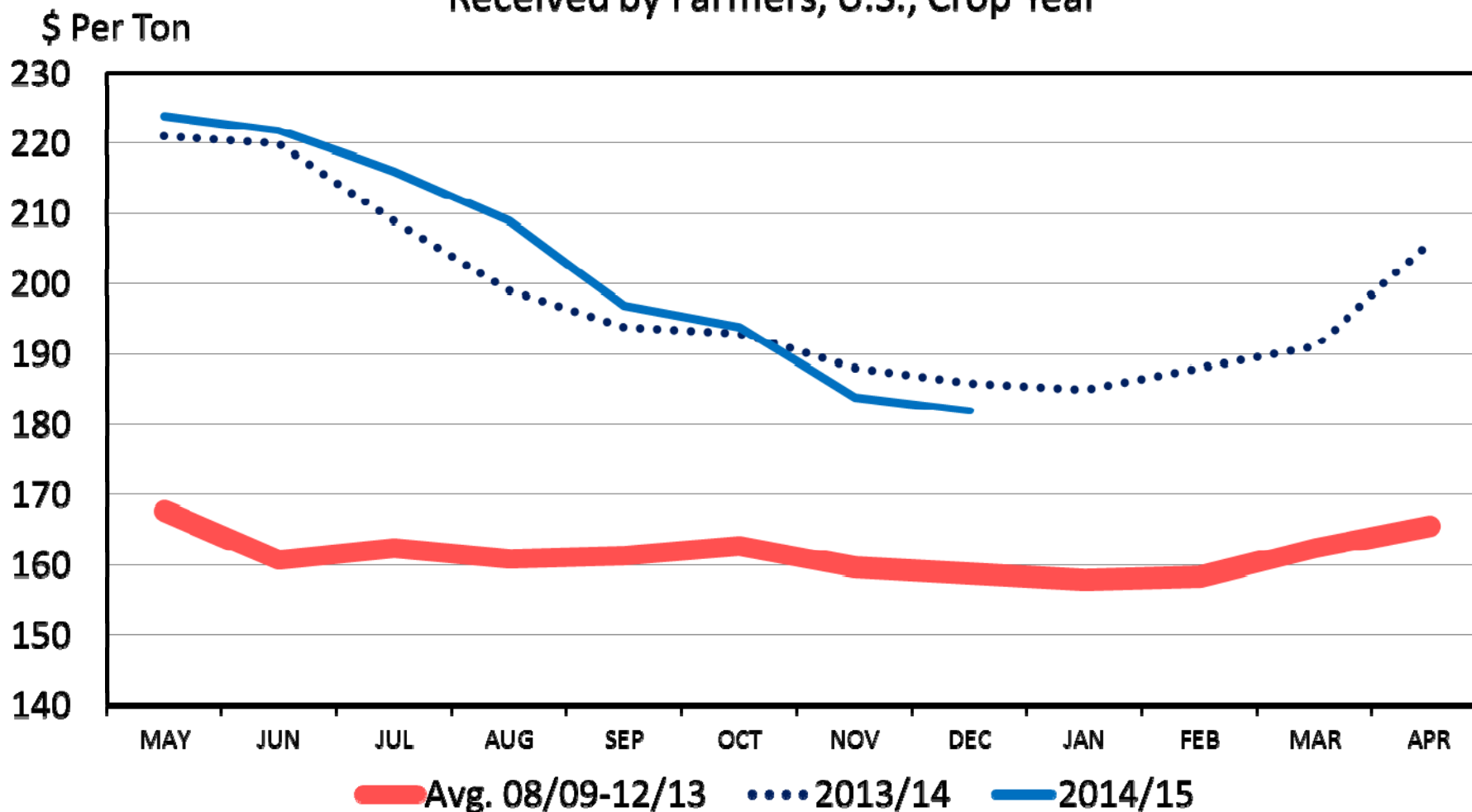
Data Source: USDA-NASS
 Livestock Marketing Information Center

G-P-09
 12/30/14



ALFALFA HAY – MONTHLY AVERAGE PRICE

Received by Farmers, U.S., Crop Year



Data Source: USDA-NASS
Livestock Marketing Information Center

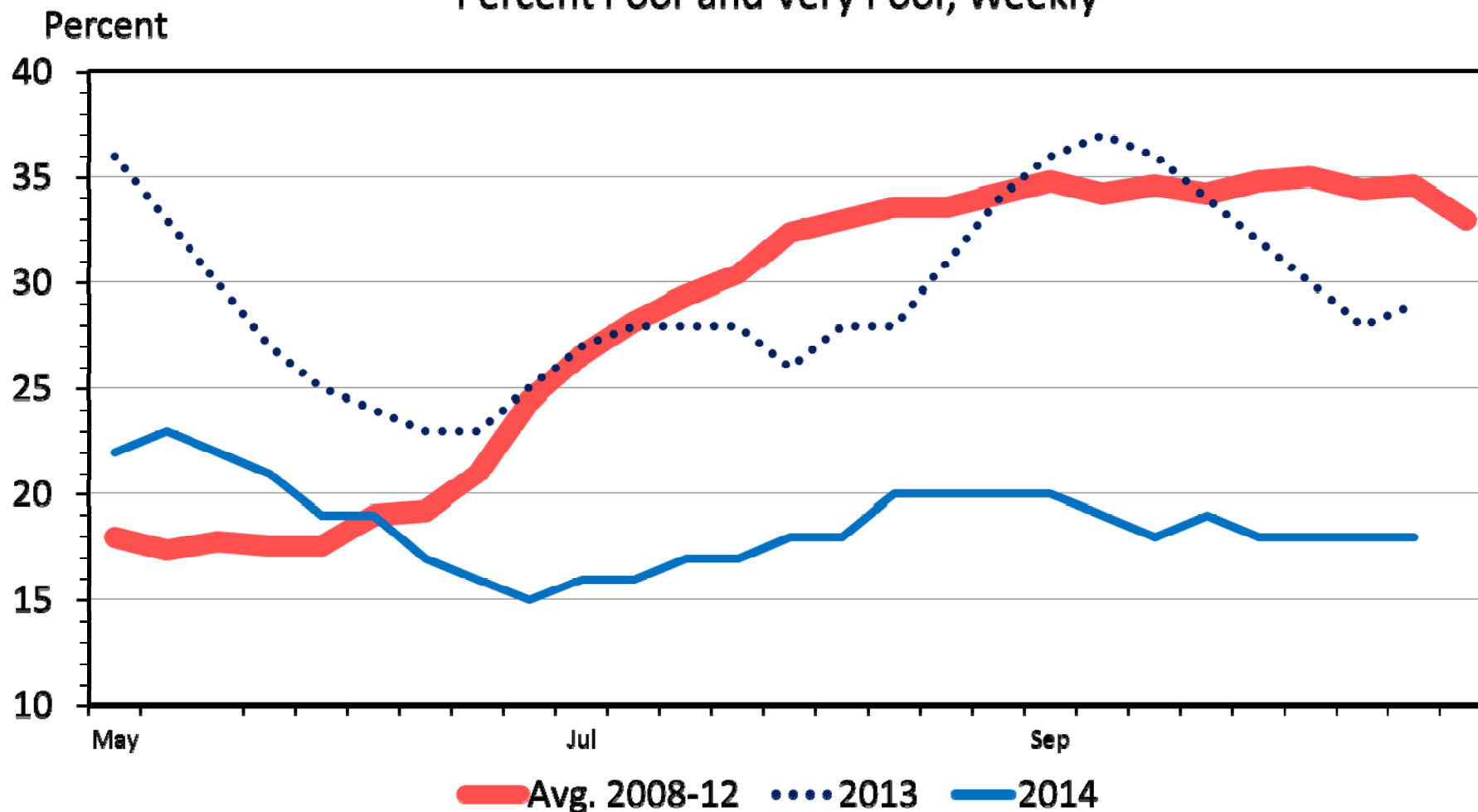
G-P-12
12/30/14

KANSAS STATE UNIVERSITY



US RANGE AND PASTURE CONDITION

Percent Poor and Very Poor, Weekly



Data Source: USDA-NASS, Compiled & Analysis by LMIC

Livestock Marketing Information Center

G-NP-30

10/27/14

KANSAS STATE UNIVERSITY

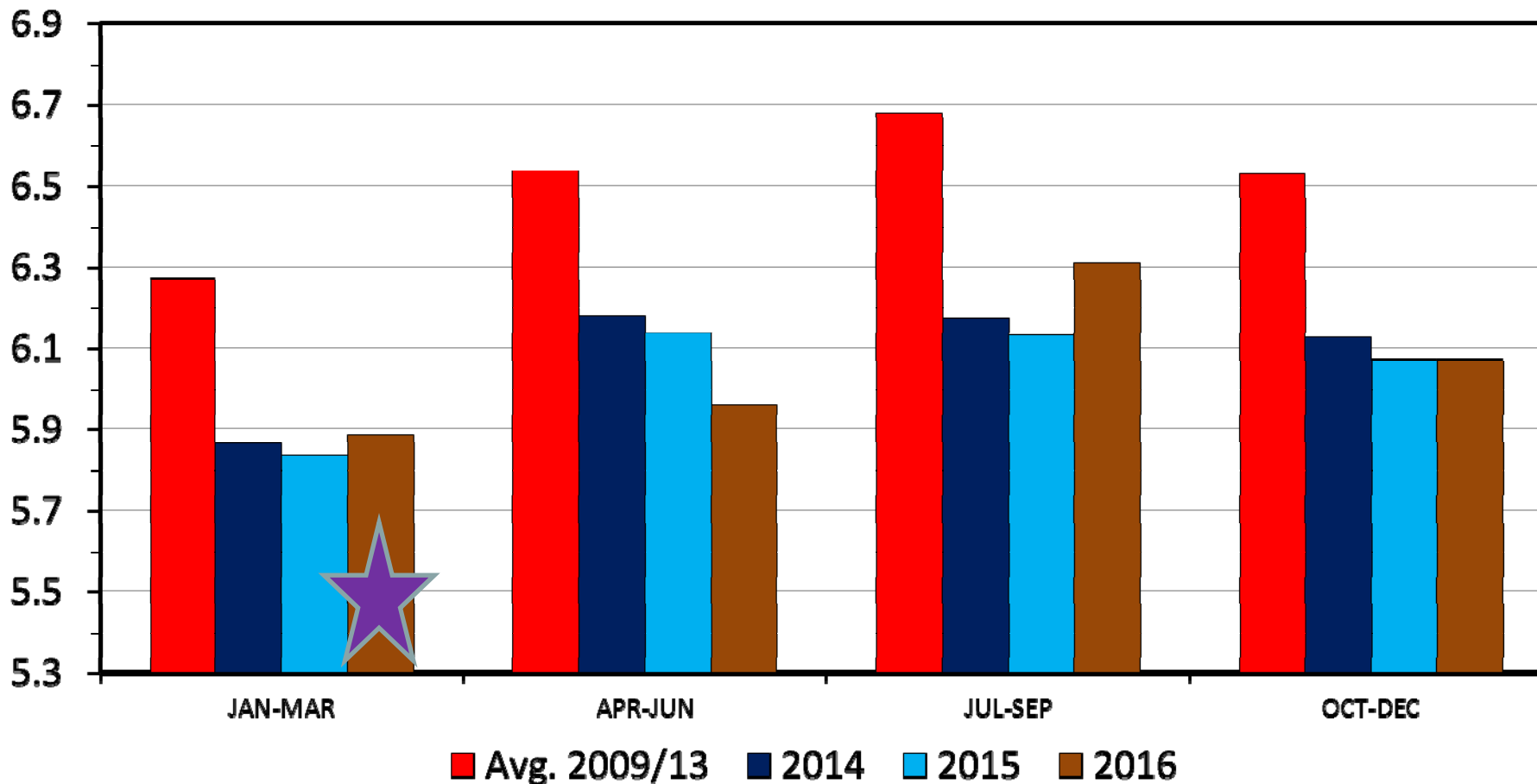


Recent & Upcoming Meat Production

COMMERCIAL BEEF PRODUCTION

Quarterly

Bil. Pounds



Data Source: USDA-NASS, Compiled & Analysis by LMIC

Livestock Marketing Information Center

M-S-01
12/29/14

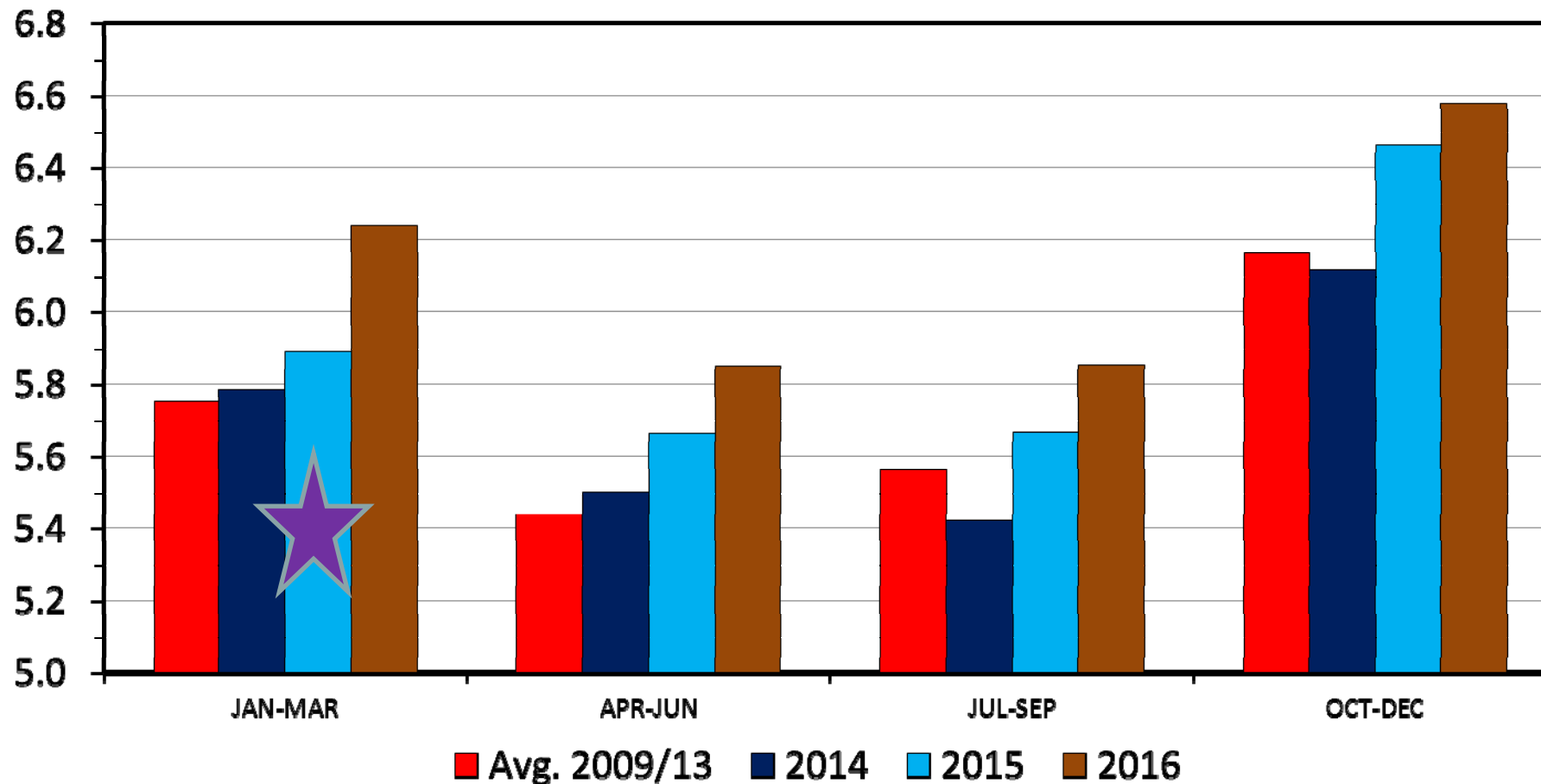
KANSAS STATE UNIVERSITY



COMMERCIAL PORK PRODUCTION

Quarterly

Bil. Pounds



Data Source: USDA-NASS, Compiled & Analysis by LMIC

Livestock Marketing Information Center

M-S-06
12/29/14

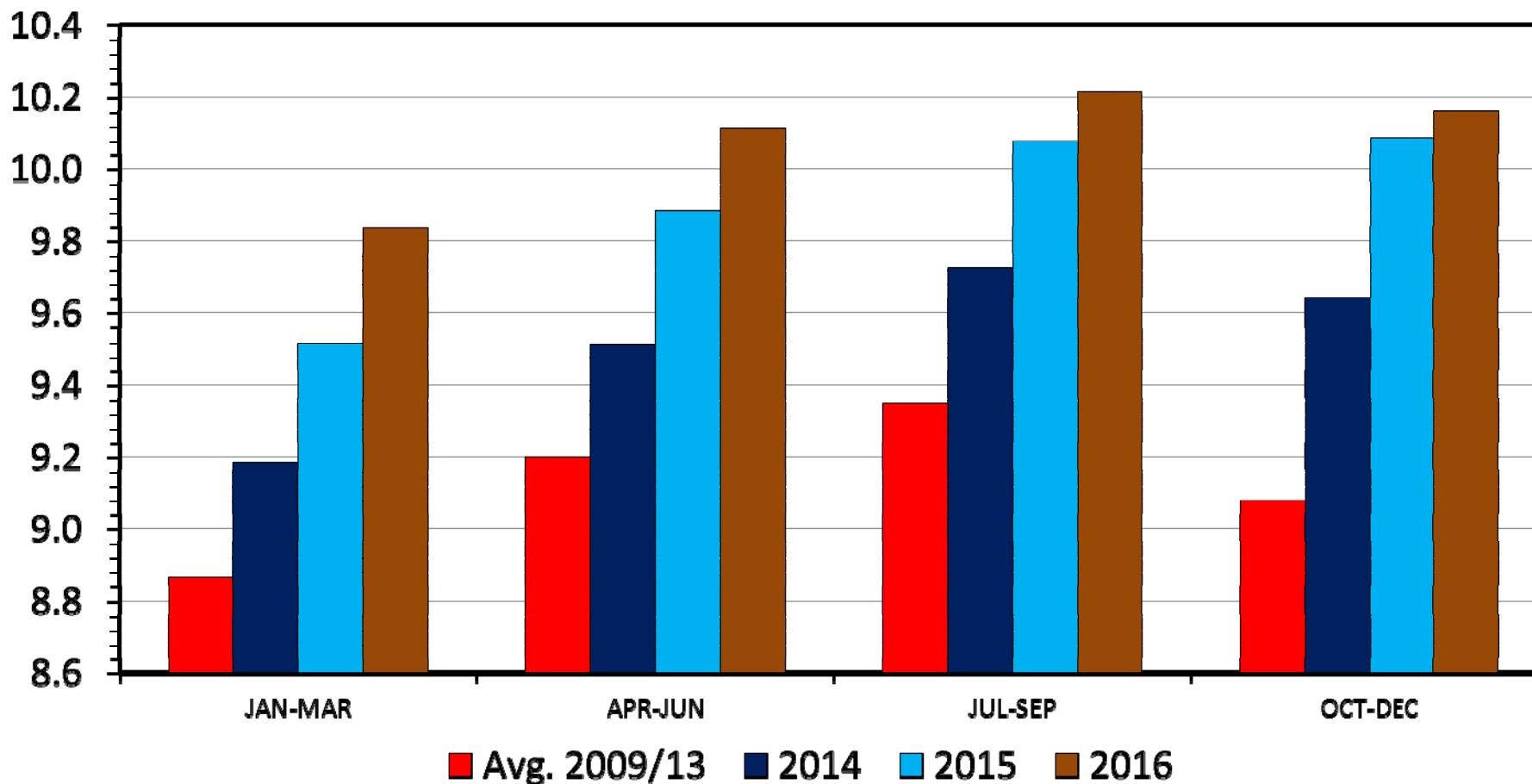
KANSAS STATE UNIVERSITY



RTC BROILER PRODUCTION

Quarterly

Bil. Pounds



Data Source: USDA-NASS, Compiled & Analysis by LMIC

Livestock Marketing Information Center

M-S-30
12/29/14

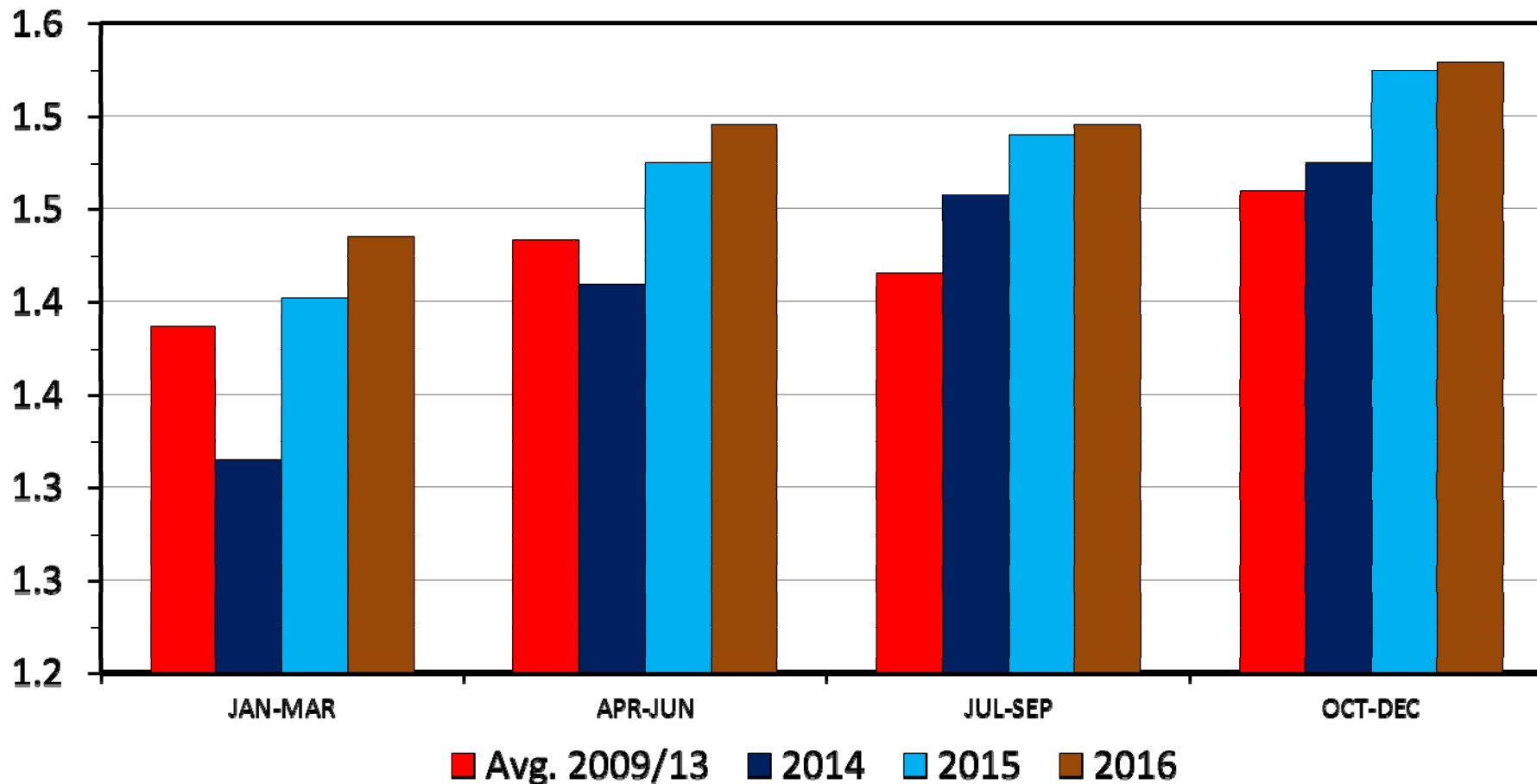
KANSAS STATE UNIVERSITY



RTC TURKEY PRODUCTION

Quarterly

Bil. Pounds



Data Source: USDA-NASS, Compiled & Analysis by LMIC

Livestock Marketing Information Center

12/29/14

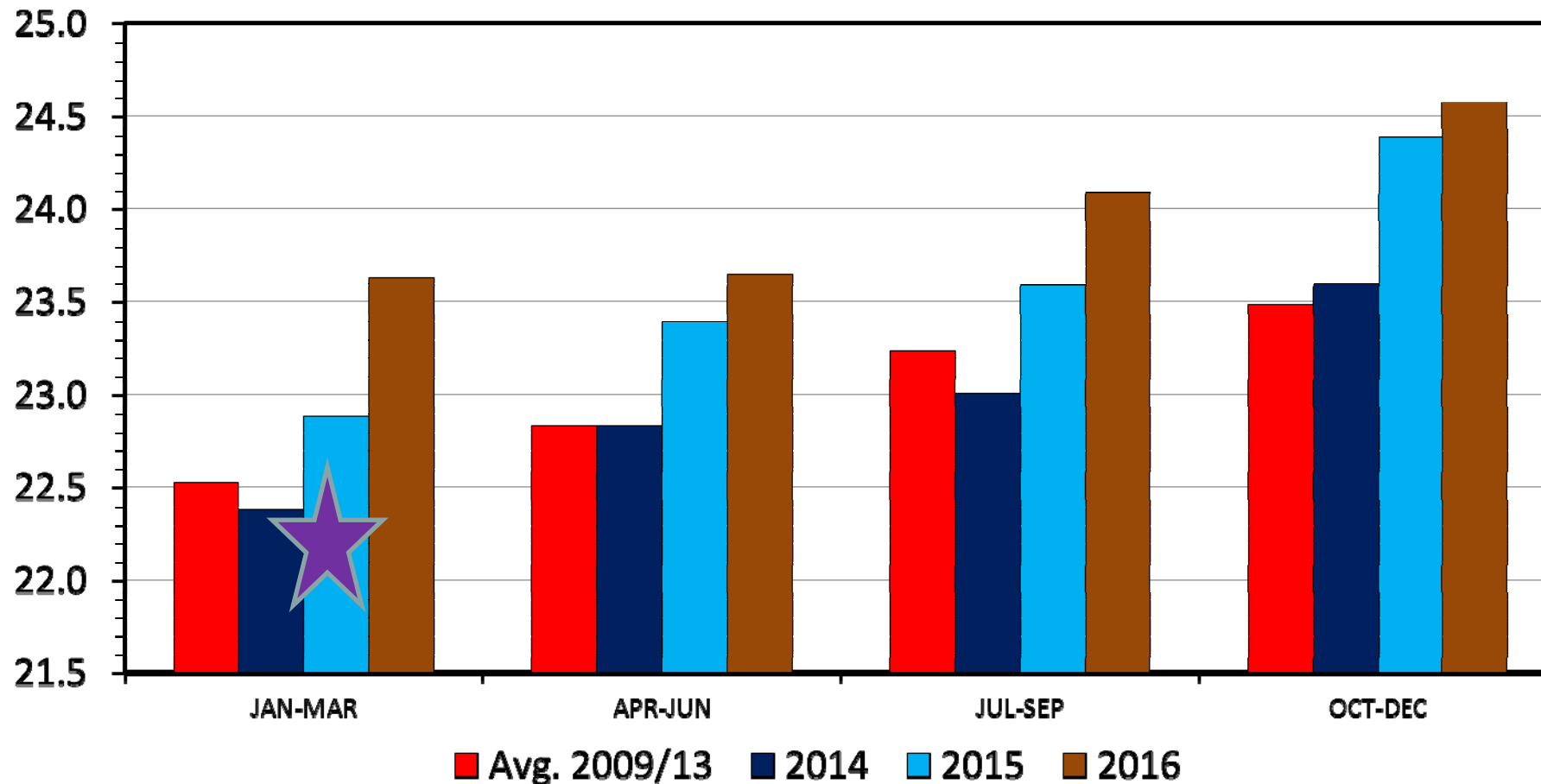
KANSAS STATE UNIVERSITY



TOTAL RED MEAT & POULTRY PRODUCTION

Quarterly

Bil. Pounds



Data Source: USDA-NASS, Compiled & Analysis by LMIC

Livestock Marketing Information Center

M-S-31
12/29/14

KANSAS STATE UNIVERSITY



USDA Long-Term projections (2015-2024)

Early release on Dec. 18, 2014

Feb. 11, 2015 report (<http://www.usda.gov/oce/commodity/projections/index.htm>)

	Recent		NEXT 5 YEARS					10 Yrs Out
Per capita meat consumption, retail weight								
Item	2013	2014	2015	2016	2017	2018	2019	2024
	<i>Pounds</i>							
Beef	56.3	54.6	52.2	49.4	48.5	49.1	49.8	52.4
Pork	46.8	45.3	46.6	48.5	48.8	49.1	49.3	49.5
Total red meat	104.4	101.1	99.9	99.0	98.4	99.3	100.1	102.9
Broilers	81.9	83.4	85.4	86.7	88.1	89.2	90.2	93.1
Turkeys	16.0	15.7	15.8	16.2	16.5	16.7	16.8	17.3
Total poultry	99.2	100.3	102.5	104.2	106.0	107.3	108.4	111.9
Red meat & poultry	203.6	201.4	202.3	203.2	204.4	206.5	208.5	214.8

**2024 (215 lbs) <
2008 (216 lbs)**

Key factors in 2015 for livestock & meat markets

CME DLR Dec. 31, 2014: <http://www.dailylivestockreport.com/documents/DLR%2012-31-2014.pdf>

1. Meat & Poultry Demand
 - 2014 prices reflect more than just tight supplies...
2. U.S. Economy
 - Lower gas prices & perhaps wage increases...
3. Broiler Sector Growth
 - 2nd half of 2014 expansion = MUCH more ckn in 15'
4. Number of pigs saved per litter
 - Breeding herd expanding; PEDv & PRRS impact?
5. Pasture and Range Conditions
 - Required for feasible beef herd expansion



Overarching Beef Industry Economic Outlook

- Supplies
 - Continued pull down, both in # of head & beef lbs
 - Herd expansion underway (watch Jan. Cattle Inv. Report)
- Demand
 - Far less certain (& understood) than supply...
 - + Yr-over-Yr for 16 of last 17 quarters
 - -3% in Q1.2014, +5% in Q2, & +4% in Q3
- Combined:
 - “Historic” price levels, excitement, & uncertainty...



LMIC Beef Production and Price Quarterly Forecasts (12/31/14)

Sources: Livestock Slaughter - USDA/NASS; Steer Prices - USDA/AMS Livestock Market News; Projections and Forecasts by LMIC

Year Quarter	Comm'l Slaughter	% Chg. from Year Ago	Average Dressed Weight	% Chg. from Year Ago	Comm'l Beef Production	% Chg. from Year Ago
2014						
I	7,375	-5.2	795.7	0.3	5,868	-5.0
II	7,836	-5.9	789.0	0.9	6,183	-5.1
III	7,630	-8.3	809.6	1.9	6,178	-6.5
IV	7,328	-8.8	821.4	2.8	6,019	-6.3
Year	30,169	-7.1	803.7	1.4	24,248	-5.7
2015						
I	7,142	-3.2	816.9	2.7	5,834	-0.6
II	7,614	-2.8	806.5	2.2	6,141	-0.7
III	7,488	-1.9	820.1	1.3	6,141	-0.6
IV	7,291	-0.5	822.2	0.1	5,995	-0.4
Year	29,535	-2.1	816.4	1.6	24,111	-0.6
2016						
I	7,159	0.2	821.5	0.6	5,881	0.8
II	7,348	-3.5	812.1	0.7	5,967	-2.8
III	7,652	2.2	827.8	0.9	6,334	3.1
IV	7,343	0.7	827.3	0.6	6,075	1.3
Year	29,502	-0.1	822.2	0.7	24,257	0.6



LMIC Beef Production and Price Quarterly Forecasts (12/31/14)

Sources: Livestock Slaughter - USDA/NASS; Steer Prices - USDA/AMS Livestock Market News; Projections and Forecasts by LMIC

Year Quarter	Live Sltr.	% Chg.	Feeder Steer Price	
	Steer Price	from	Southern Plains	
	5-Mkt Avg	Year Ago	7-800#	5-600#
2014				
I	146.34	16.6	171.77	209.30
II	147.82	18.3	193.16	227.67
III	158.49	29.6	225.93	263.14
IV	165.45	26.5	239.81	285.63
Year	154.52	22.7	207.67	246.44
2015				
I				
II				
III				
IV				
Year				
2016				
I				
II				
III				
IV				
Year				

2014: +23% from 2013

2014: +38% from 2013

2014: +43% from 2013

LMIC Beef Production and Price Quarterly Forecasts (12/31/14)

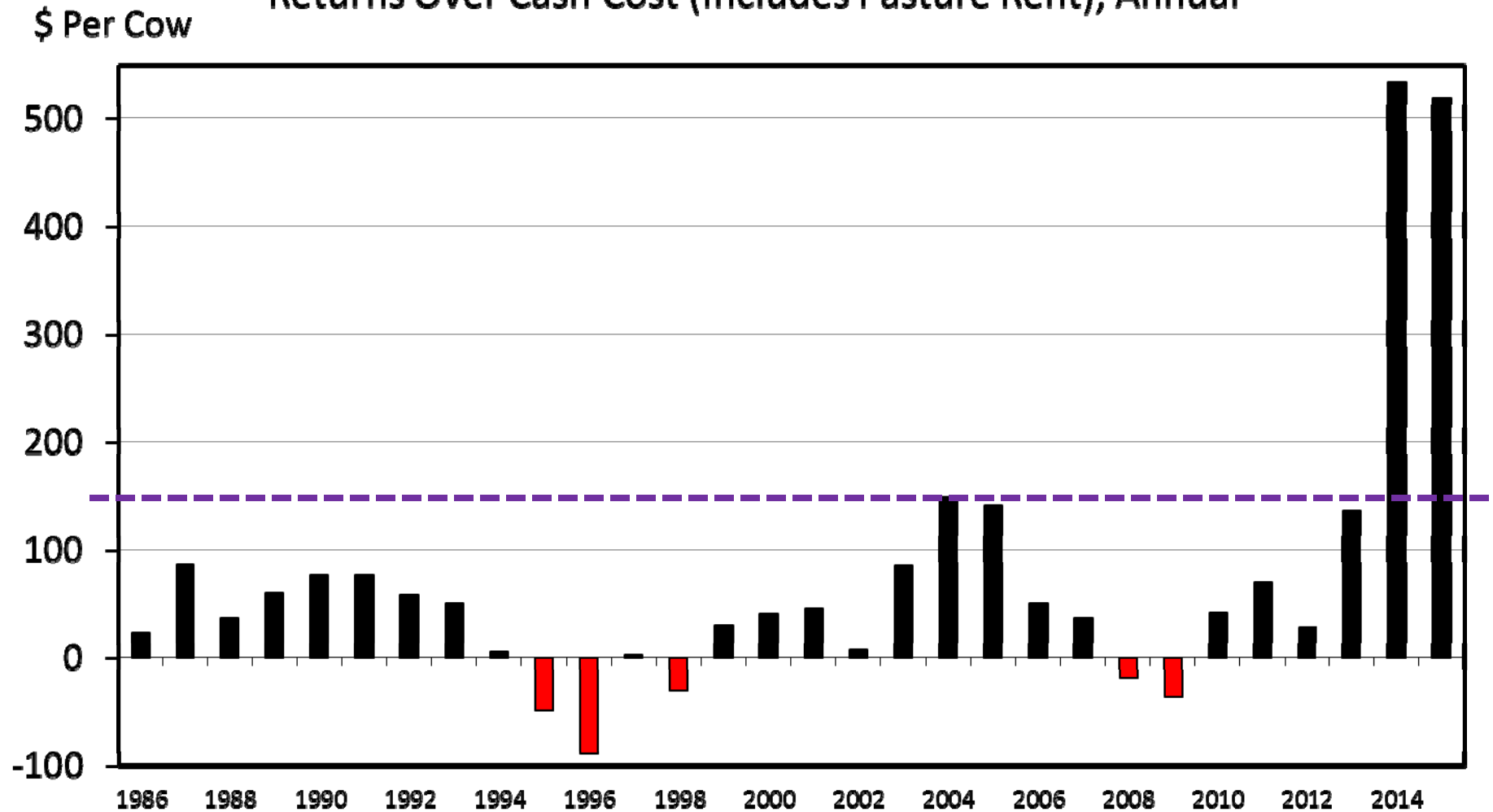
Sources: Livestock Slaughter - USDA/NASS; Steer Prices - USDA/AMS Livestock Market News; Projections and Forecasts by LMIC

Year Quarter	Live Sltr.	% Chg.	Feeder Steer Price	
	Steer Price	from	Southern Plains	
	5-Mkt Avg	Year Ago	7-800#	5-600#
2014				
I	146.34	16.6	171.77	209.30
II	147.82	18.3	193.16	227.67
III	158.49	29.6	225.93	263.14
IV	165.45	26.5	239.81	285.63
Year	154.52	22.7	207.67	246.44
2015				
I	162-165	11.7	226-230	276-282
II	163-167	11.6	228-234	280-287
III	159-164	1.9	226-233	273-282
IV	160-166	-1.5	222-230	266-275
Year	161-165	5.5	226-231	274-281
2016				
I	161-168	0.6	221-230	270-283
II	162-170	0.6	224-233	274-287
III	158-167	0.6	221-232	268-282
IV	158-168	0.0	216-228	261-276
Year	161-167	0.6	222-229	270-280



Historically high 2014-2015 cow-calf return projections...

ESTIMATED AVERAGE COW CALF RETURNS Returns Over Cash Cost (Includes Pasture Rent), Annual



Data Source: USDA-AMS, Compiled and Analysis by LMIC

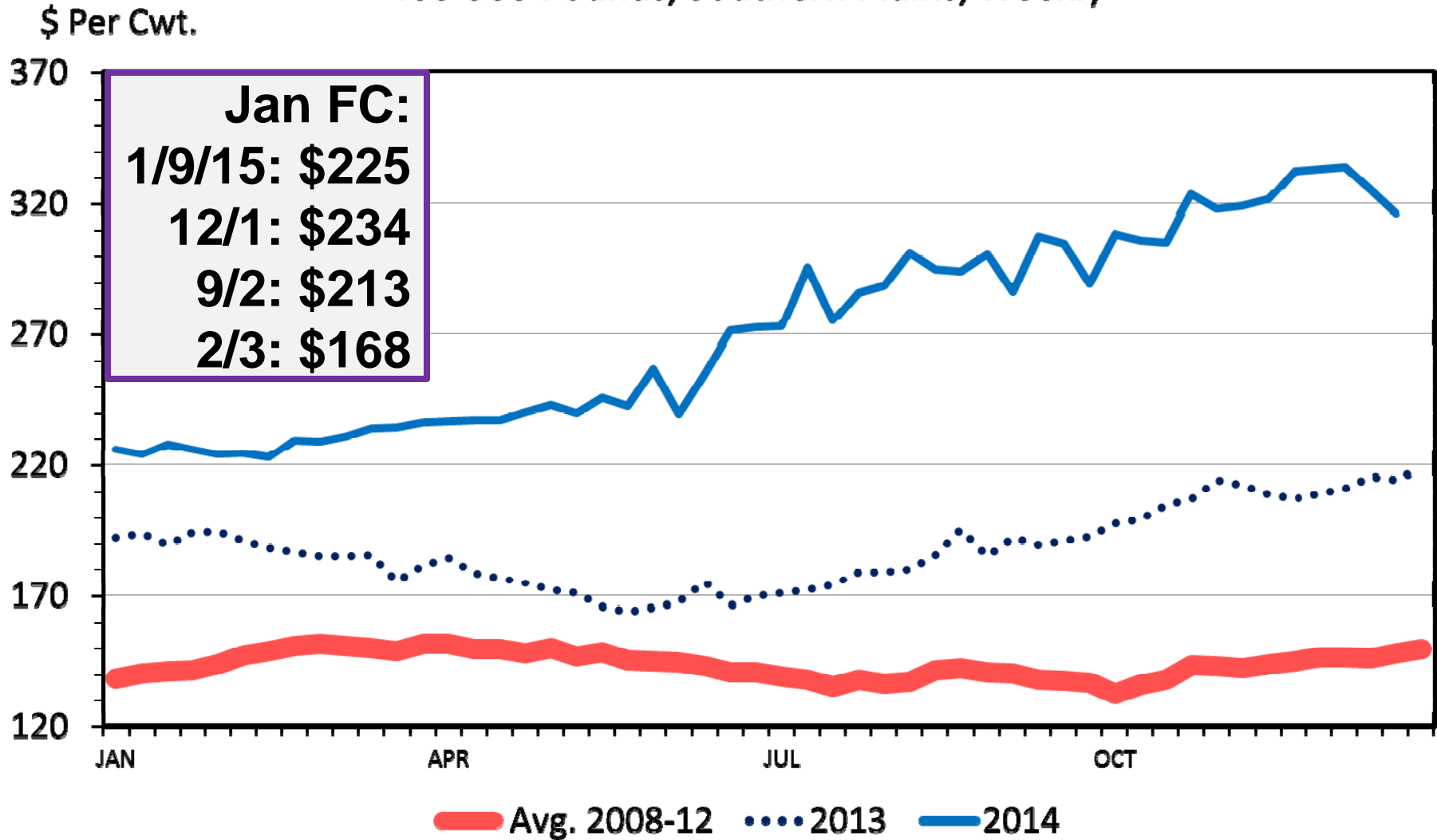
Livestock Marketing Information Center

C-P-66
12/15/14



MED. & LRG. #1 STEER CALF PRICES

400-500 Pounds, Southern Plains, Weekly



Data Source: USDA-AMS, Compiled & Analysis by LMIC

Livestock Marketing Information Center

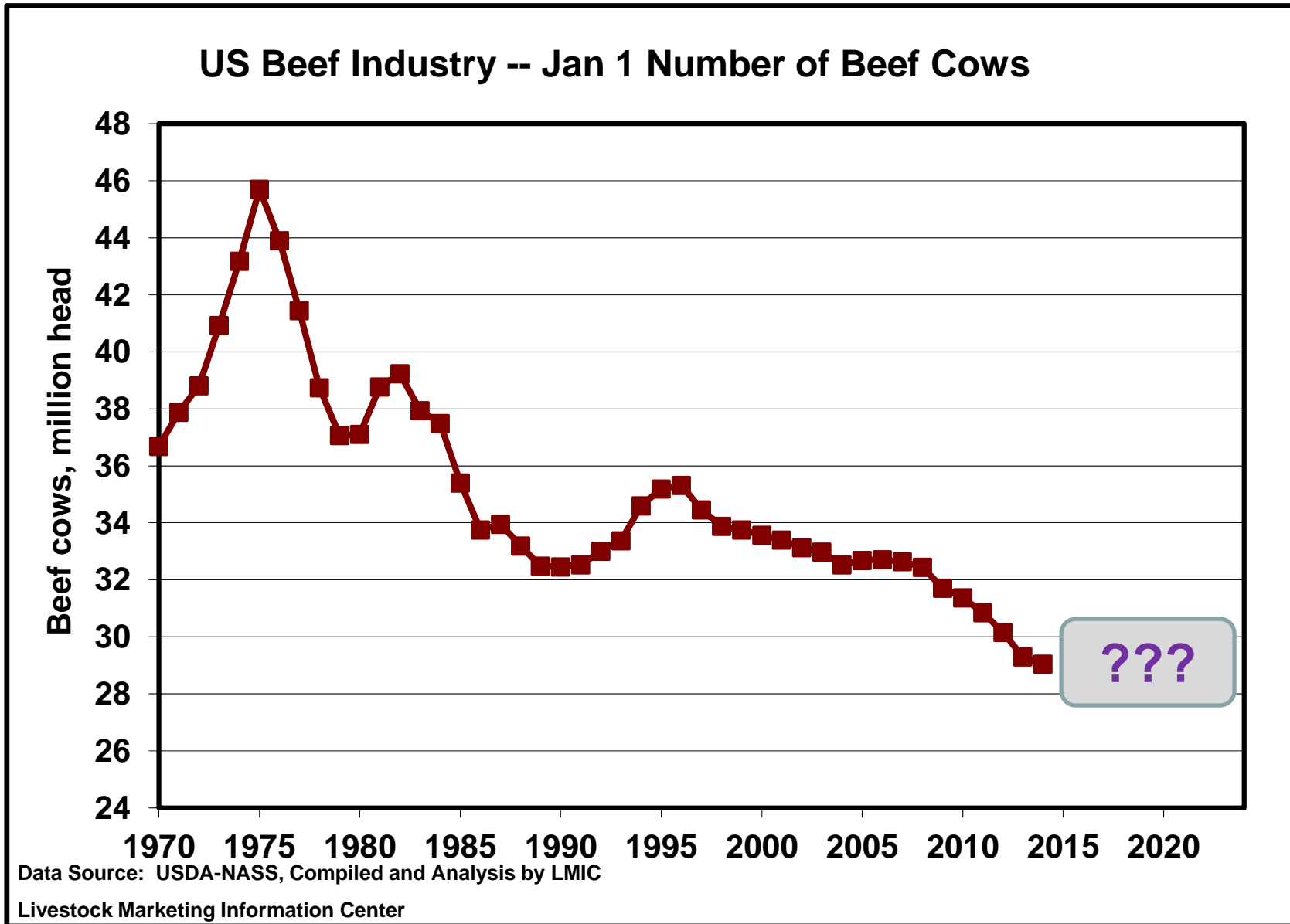
C-P-49A

12/29/14

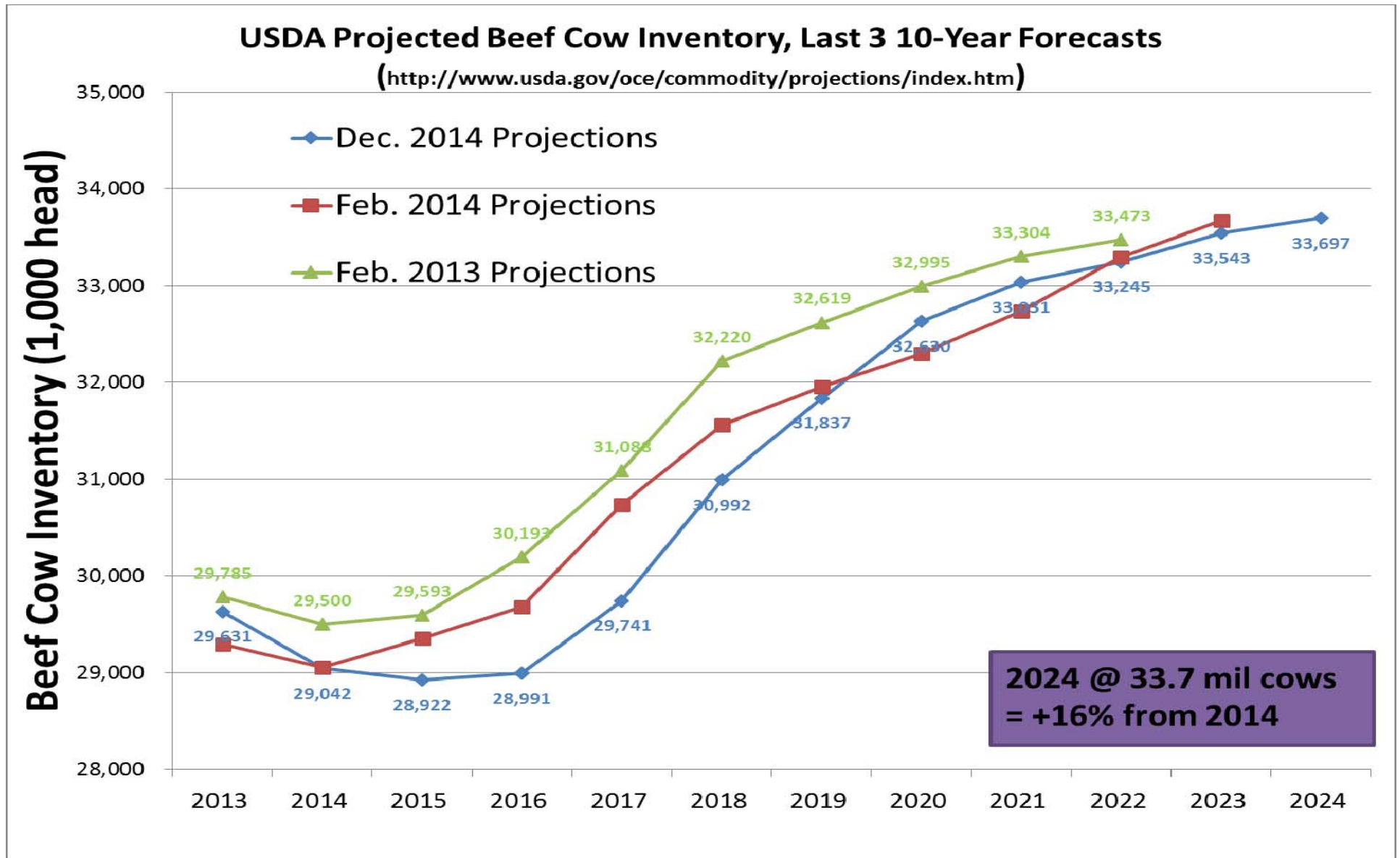
KANSAS STATE UNIVERSITY



Where will cow numbers go from current levels?



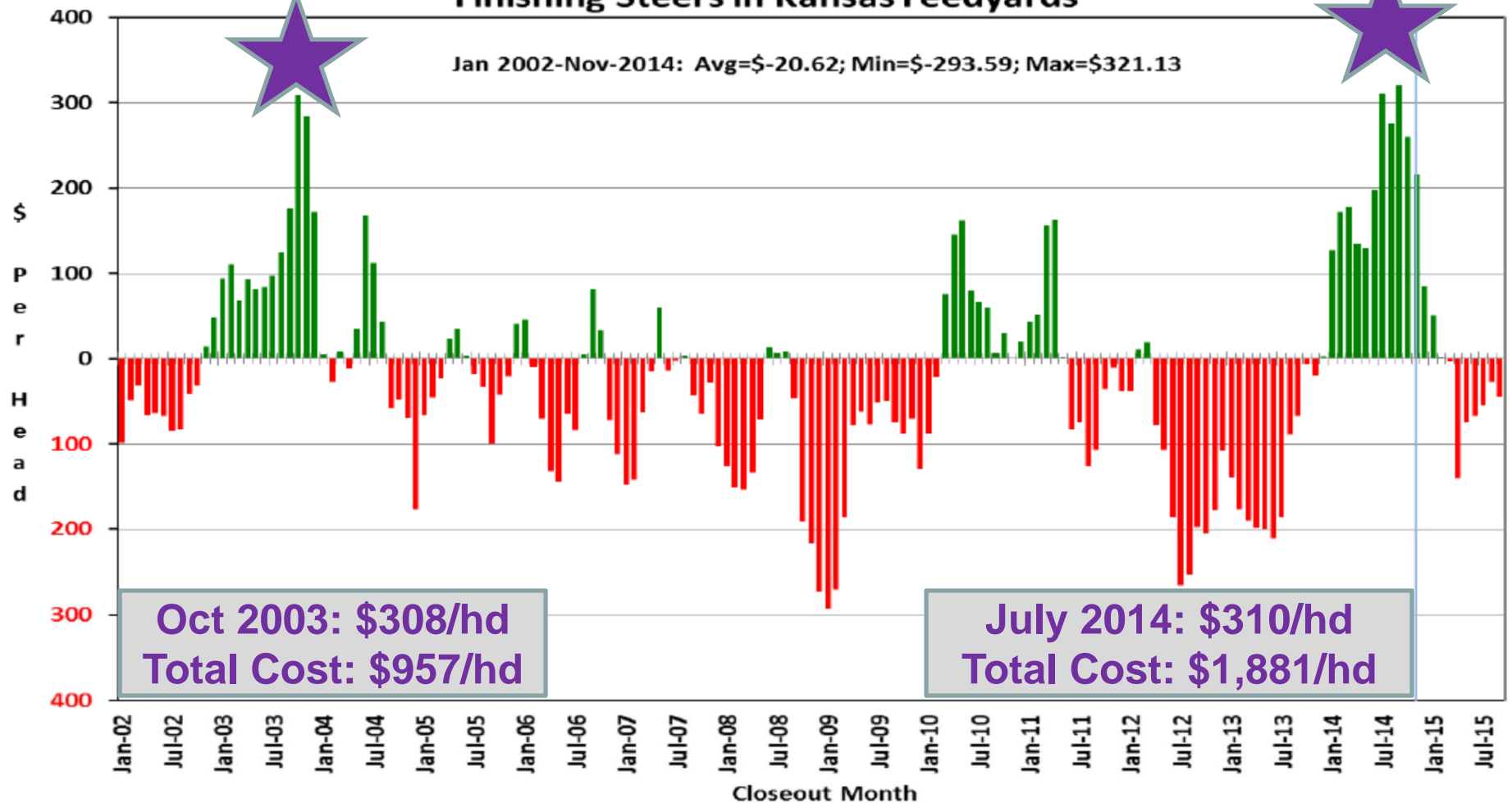
USDA Long-Term Herd Projections



Historical and Projected Kansas Feedlot Net Returns (as of 1/5/15')

(<http://www.agmanager.info/livestock/marketing/outlook/newsletters/FinishingReturns/default.asp>)

Figure 1. Historical & Projected Average Net Returns for Finishing Steers in Kansas Feedyards



Historical and Projected Kansas Feedlot Net Returns (as of 1/5/15')

(<http://www.agmanager.info/livestock/marketing/outlook/newsletters/FinishingReturns/default.asp>)

Table 1. Projected Values for Finishing Steers in Kansas Feedyards*

Closeout Mo-Yr	Net Return	FCOG**	Fed Price	Feeder Price	Breakeven FCOG**	Breakeven Fed Price	Breakeven Feeder Price
Dec-14	85.00	86.59	163.17	207.69	100.04	157.30	218.08
Jan-15	51.38	85.09	166.07	216.07	93.62	162.41	222.49
Feb-15	2.11	85.11	166.41	224.78	85.45	166.26	225.05
Mar-15	-3.36	85.64	168.14	228.48	85.09	168.38	228.05
Apr-15	-139.42	85.96	160.58	233.37	63.00	170.80	214.96
May-15	-74.04	84.65	163.45	237.36	73.01	168.90	227.12
Jun-15	-66.51	83.73	158.20	226.45	73.45	162.97	217.54
Jul-15	-54.42	83.84	155.78	219.92	75.46	159.66	212.72
Aug-15	-26.79	84.81	157.68	219.62	80.76	159.56	216.09
Sep-15	-44.67	86.27	157.51	221.68	79.59	160.65	215.74

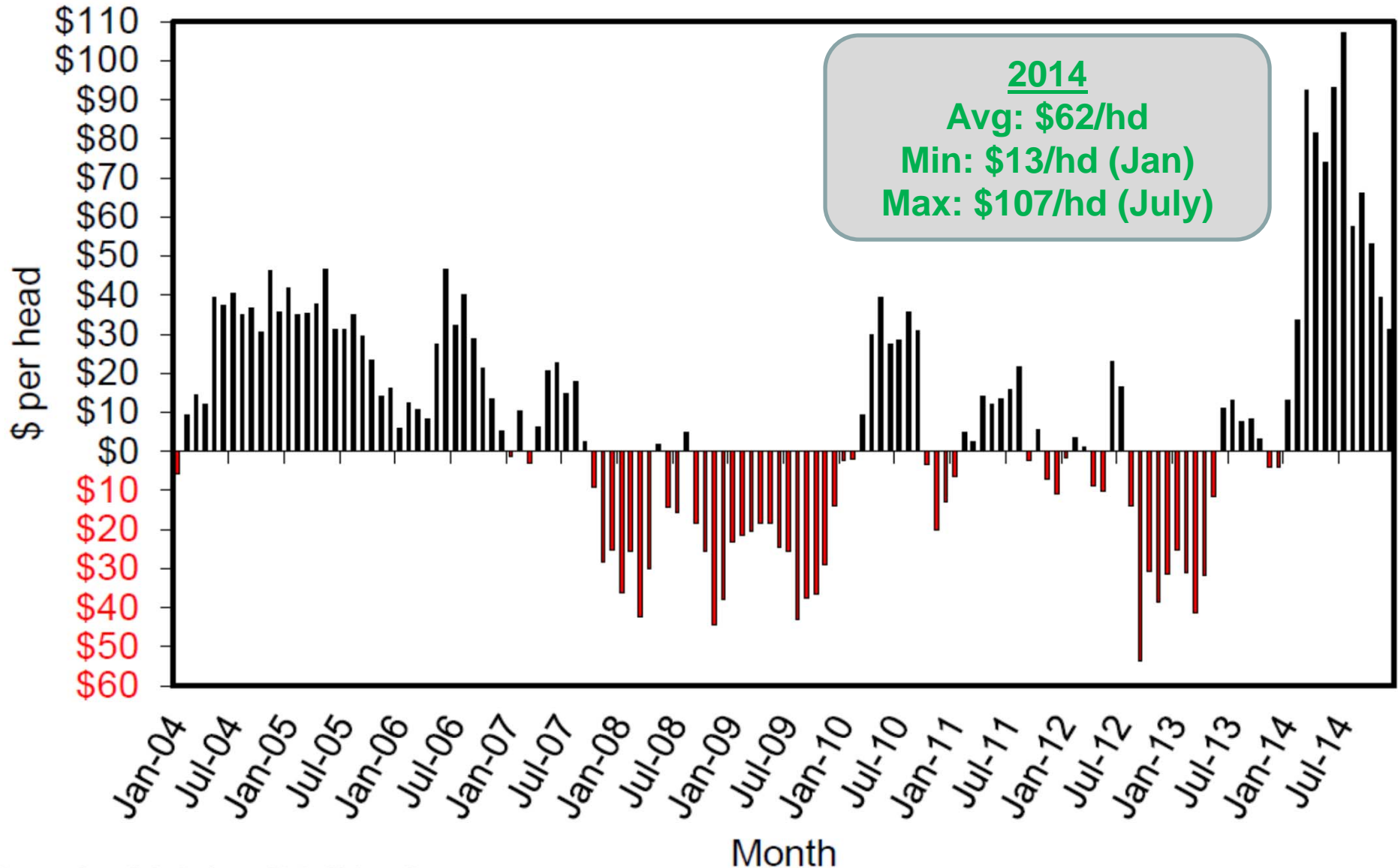


Overarching Pork Industry Economic Outlook

- Supplies
 - Been down; Substantial breeding herd expansion ongoing
 - Increase in Comm. Slaughter depends on PEDv & PRRS
- Demand
 - Strength “lost” in tight supply story
 - + Yr-over-Yr for 8 straight quarters
 - +6% in Q1.2014, +8% in Q2, & +6% in Q3
- Combined: “excitement and uncertainty”



Estimated Returns to Farrow to Finish, Iowa Jan-04 thru December-14



Source: Lee Schulz, Iowa State University <http://www.econ.iastate.edu/estimated-returns/>



USDA Quarterly Hogs & Pigs Report Dec. 23, 2014

Category	2013	2014	'14 as Pct of '13	Pre-Report Est's ¹	Actual minus Est.
Inventories on Dec 1					
All hogs and pigs	64775	66,050	102.0	101.5	0.5
Kept for breeding	5757	5,969	103.7	103.0	0.7
Kept for marketing	59018	60,082	101.8	101.3	0.5
Under 50 lbs.	18389	19,026	103.5	103.7	-0.2
50-119 lbs.	16080	16,630	103.4	102.7	0.7
120-179 lbs.	12576	12,635	100.5	99.4	1.1
180 lbs. and over	11972	11,791	98.5	97.5	1.0
Farrowings					
Sep-Nov sows farrowed	2,780	2,871	103.3	103.8	-0.5
Dec-Feb Intentions	2,763	2,870	103.9	103.8	0.1
Mar-May Intentions	2,810	2,900	103.2	103.9	-0.7
Sep-Nov Pig Crop	28,253	29,373	104.0	103.3	0.7
Sep-Nov pigs saved per litter	10.16	10.23	100.7	99.9	0.8

*Thousand head ** Thousand Litters

¹Source: Urner Barry



LMIC Pork Production and Price Quarterly Forecasts (12/31/14)

Sources: USDA/NASS; USDA/AMS Livestock Market News; Projections and Forecasts by LMIC

Year Quarter	Comm'l Slaughter	% Chg. from Year Ago	Average Carcass Weight	% Chg. from Year Ago	Comm'l Pork Production	% Chg. from Year Ago
2014						
I	27,134	-2.6%	213.33	2.7%	5,785	0.2%
II	25,574	-4.4%	215.33	4.4%	5,504	-0.2%
III	25,554	-7.6%	212.23	4.2%	5,423	-3.5%
IV	28,624	-3.9%	214.19	1.5%	6,131	-2.3%
Year	106,886	-4.6%	213.77	3.2%	22,844	-1.5%
2015						
I	27,403	1.0%	215.09	0.8%	5,894	1.9%
II	26,428	3.3%	214.36	-0.5%	5,665	2.9%
III	26,814	4.9%	210.79	-0.7%	5,652	4.2%
IV	30,177	5.4%	214.50	0.1%	6,473	5.6%
Year	110,822	3.7%	213.68	0.0%	23,684	3.7%
2016						
I	28,935	5.6%	215.48	0.2%	6,235	5.8%
II	27,241	3.1%	214.75	0.2%	5,850	3.3%
III	27,622	3.0%	211.39	0.3%	5,839	3.3%
IV	30,620	1.5%	215.06	0.3%	6,585	1.7%
Year	114,418	3.2%	214.17	0.2%	24,509	3.5%



LMIC Pork Production and Price Quarterly Forecasts (12/31/14)

Sources: USDA/NASS; USDA/AMS Livestock Market News; Projections and Forecasts by LMIC

Year Quarter	Comm'l Slaughter	% Chg. from Year Ago	Average Carcass Weight	% Chg. from Year Ago	Comm'l Pork Production	% Chg. from Year Ago
2014						
I	27,134	-2.6%	213.33	2.7%	5,785	0.2%
II	25,574	-4.4%	215.33	4.4%	5,504	-0.2%
III	25,554	-7.6%	212.23	4.2%	5,423	-3.5%
IV	28,624	-3.9%	214.19	1.5%	6,131	-2.3%
Year	106,886	-4.6%	213.77	3.2%	22,844	-1.5%
2015						
I	27,403	1.0%			5,894	1.9%
II	26,428	3.3%			5,665	2.9%
III	26,814	4.9%			5,652	4.2%
IV	30,177	5.4%			6,473	5.6%
Year	110,822	3.7%			23,684	3.7%
2016						
I	28,935	5.6%	215.48	0.2%	6,235	5.8%
II	27,241	3.1%	214.75	0.2%	5,850	3.3%
III	27,622	3.0%	211.39	0.3%	5,839	3.3%
IV	30,620	1.5%	215.06	0.3%	6,585	1.7%
Year	114,418	3.2%	214.17	0.2%	24,509	3.5%

Ron Plain (Dec. 26):
Comm. Slaughter
+4.6% in 2015

LMIC Pork Production and Price Quarterly Forecasts (12/31/14)

Sources: USDA/NASS; USDA/AMS Livestock Market News; Projections and Forecasts by LMIC

Year Quarter	Per Capita Consumption	% Chg. from Year Ago	Prices National Wtd Avg Base	% Chg. from Year Ago
2014				
I	11.34	-1.0%	91.44	12.8%
II	10.97	-2.6%	111.84	25.2%
III	11.15	-2.3%	110.03	15.5%
IV	12.81	0.9%	89.90	8.3%
Year	46.27	-1.2%	100.80	16.1%
2015				
I	11.75	3.6%	86-89	-4.3%
II	11.31	3.2%	89-93	-18.6%
III	11.32	1.5%	86-91	-19.6%
IV	13.02	1.7%	77-83	-11.0%
Year	47.41	2.5%	85-89	-13.9%
2016				
I	12.25	4.2%	78-85	-6.9%
II	11.53	1.9%	81-89	-6.6%
III	11.49	1.6%	80-88	-5.1%
IV	13.05	0.2%	72-82	-3.8%
Year	48.32	1.9%	79-85	-5.7%



LMIC Pork Production and Price Quarterly Forecasts (12/31/14)

Sources: USDA/NASS; USDA/AMS Livestock Market News; Projections and Forecasts by LMIC

Year Quarter	Per Capita Consumption	% Chg. from Year Ago	Prices National Wtd Avg Base	% Chg. from Year Ago
2014				
I	11.34	-1.0%	91.44	12.8%
II	10.97	-2.6%	111.84	25.2%
III	11.15	-2.3%	110.03	15.5%
IV	12.81	0.9%	89.90	8.3%
Year	46.27	-1.2%	100.80	16.1%
2015				
I			86-89	-4.3%
II			89-93	-18.6%
III			86-91	-19.6%
IV			77-83	-11.0%
Year	47.1	1.9%	85-89	-13.9%
2016				
I	12.25	4.2%	78-85	-6.9%
II	11.53	1.9%	81-89	-6.6%
III	11.49	1.6%	80-88	-5.1%
IV	13.05	0.2%	72-82	-3.8%
Year	48.32	1.9%	79-85	-5.7%

Ron Plain (Dec. 26):
2015 Avg Price:
\$84/cwt



Overarching Chicken Industry Economic Outlook

- **Supplies**

- Expansion underway: +3% in 2015 per Pruitt (11/7/14)

- **Demand**

- Ongoing beneficiary of higher beef & pork prices

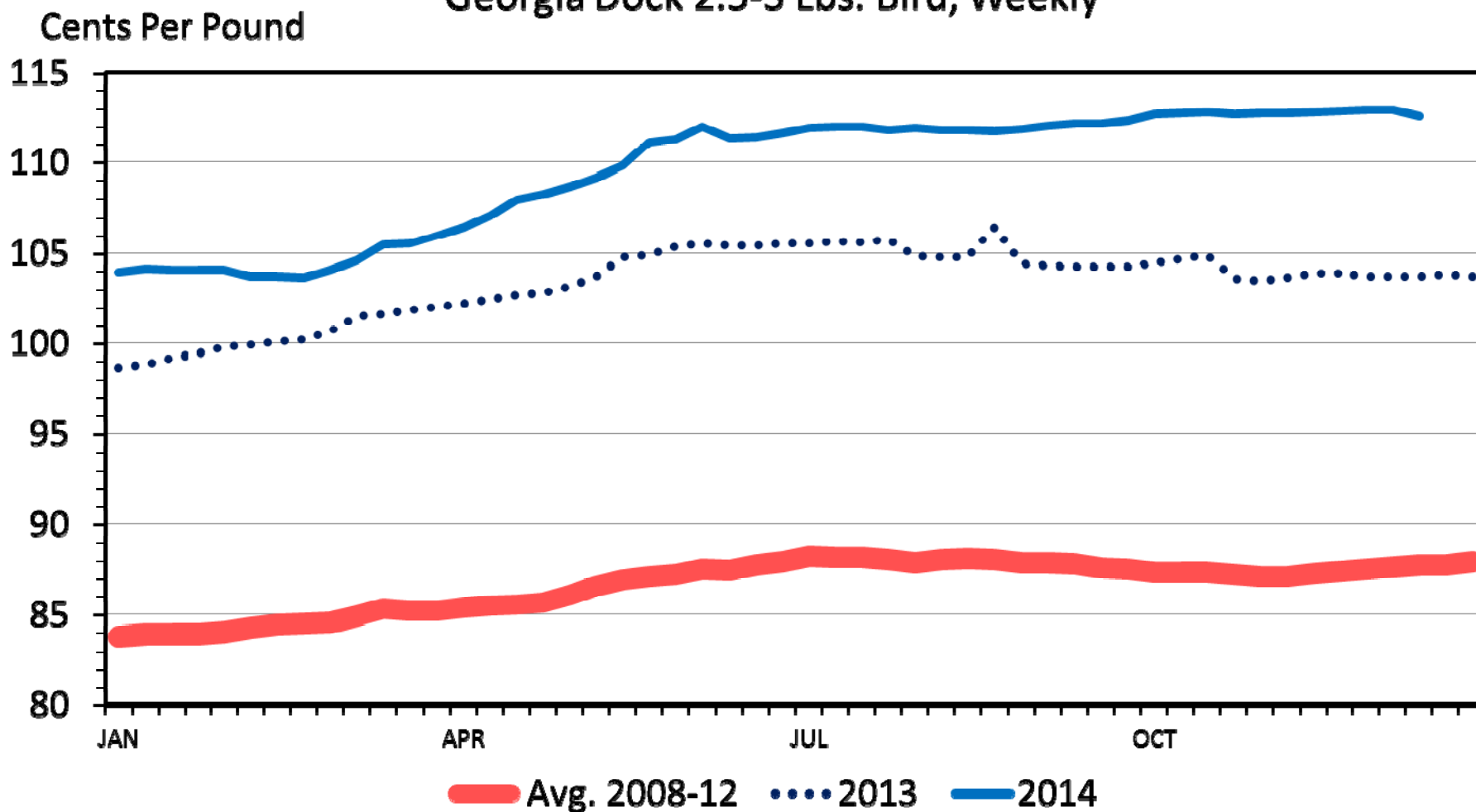
- **Combined:**

- Most certain part of 2015-16 meat supply situation



BROILER PRICES

Georgia Dock 2.5-3 Lbs. Bird, Weekly



Data Source: USDA-AMS

Livestock Marketing Information Center

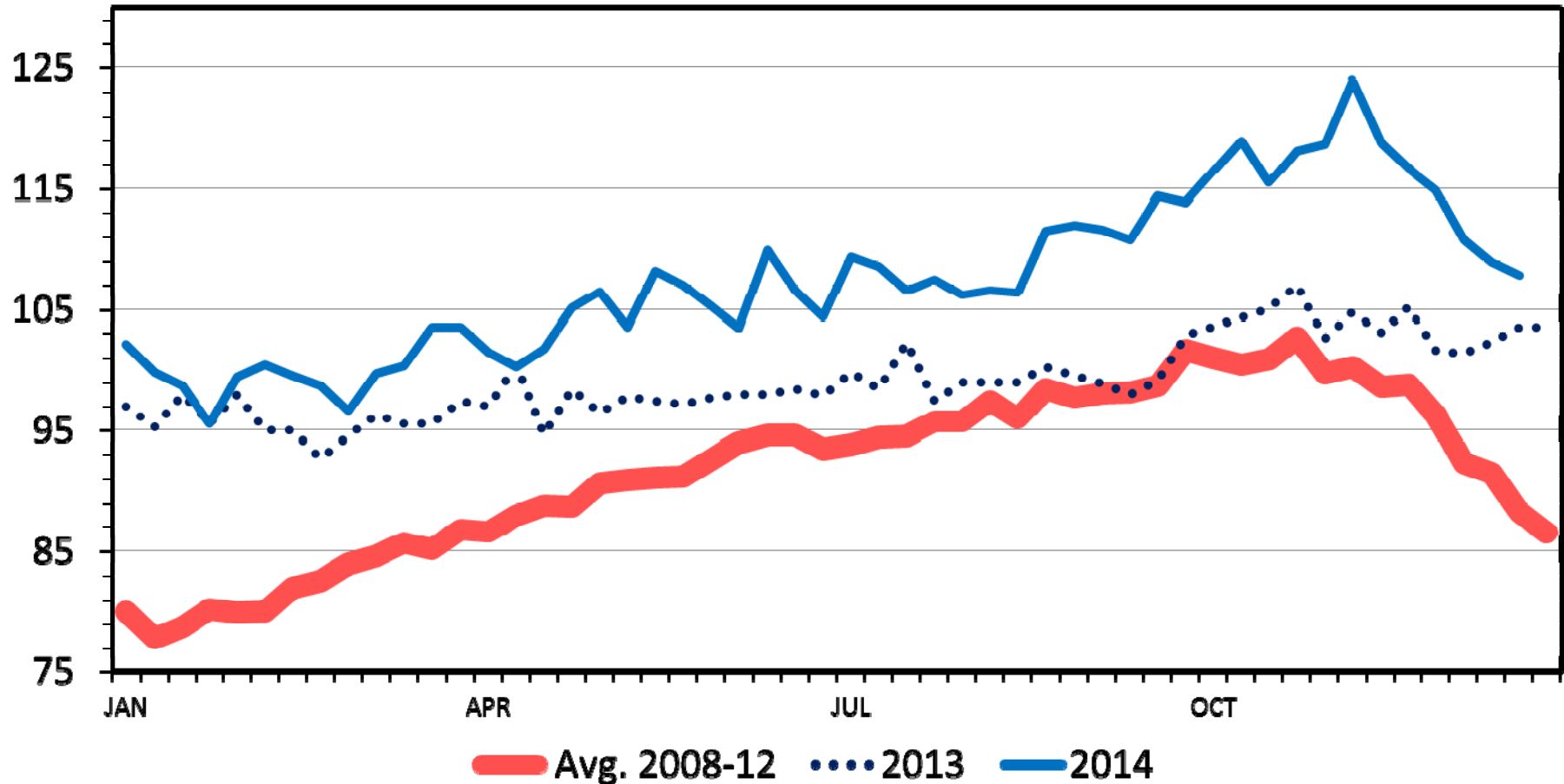
P-P-06
12/26/14



TURKEY PRICES

National Hens, 8-16 Pounds, Weekly

Cents Per Pound



Data Source: USDA-AMS

Livestock Marketing Information Center

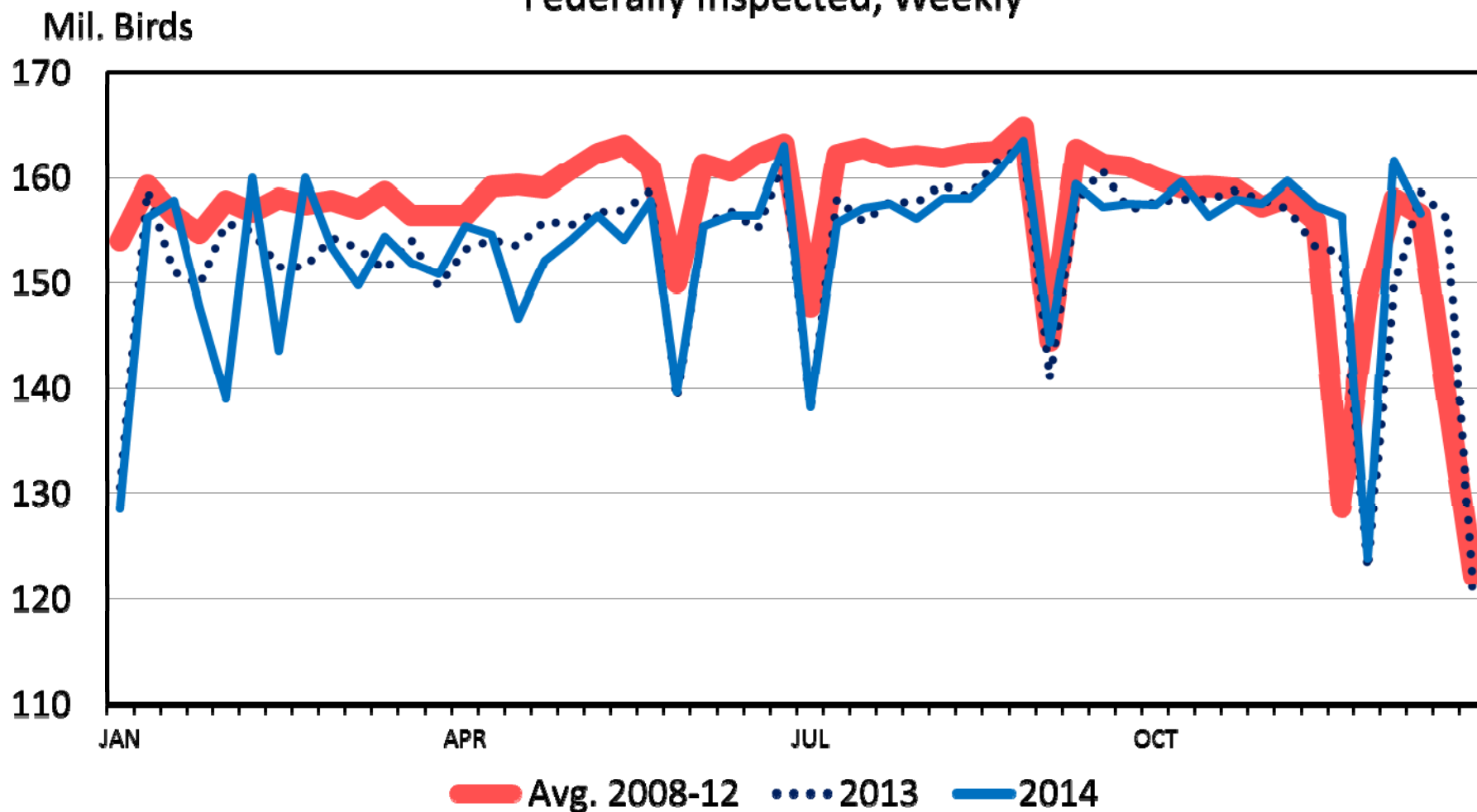
P-P-08
12/26/14

KANSAS STATE UNIVERSITY



BROILER SLAUGHTER

Federally Inspected, Weekly



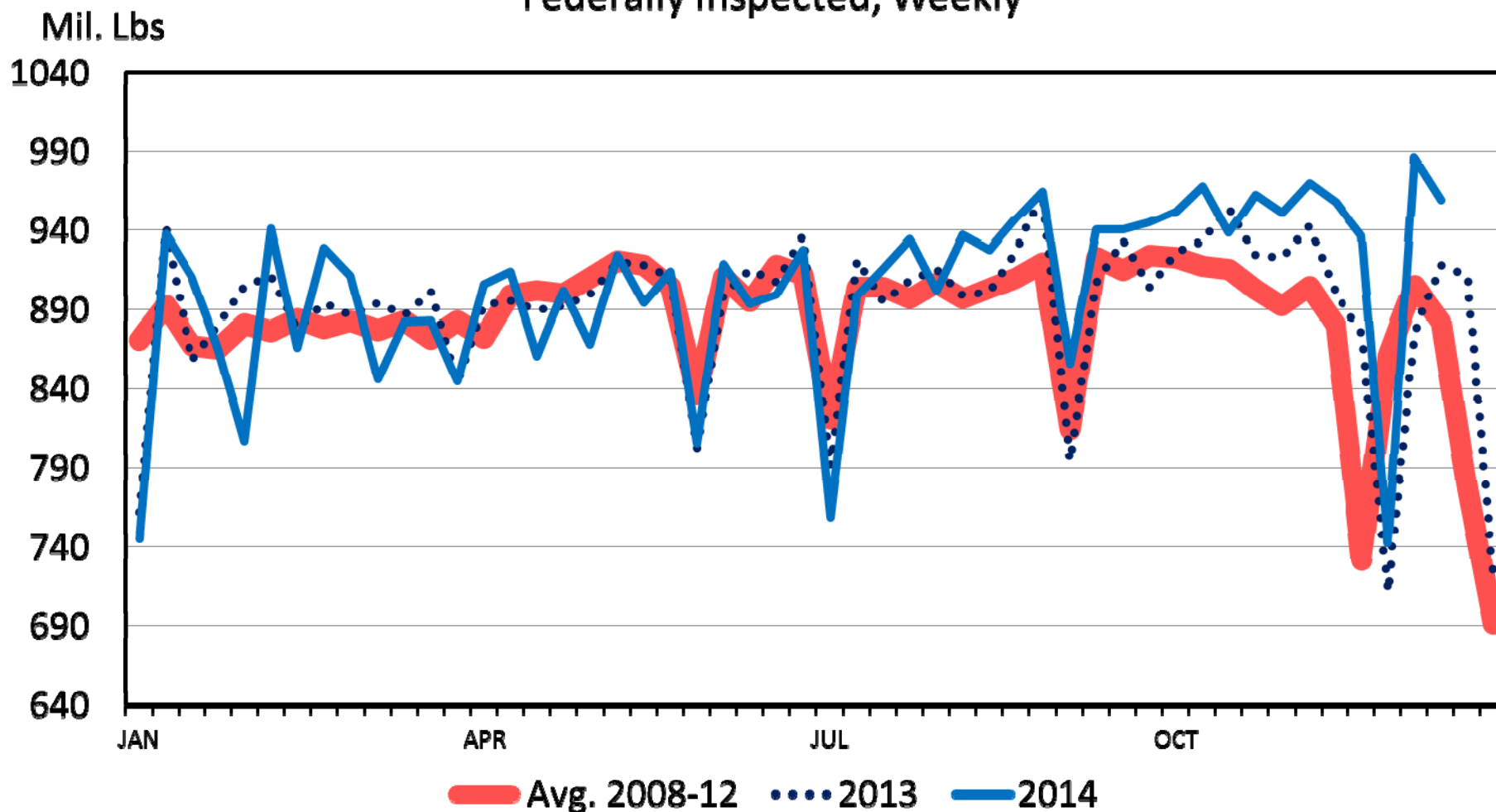
Data Source: USDA-AMS & USDA-NASS
Livestock Marketing Information Center

P-S-16
12/26/14



BROILER PRODUCTION

Federally Inspected, Weekly



Data Source: USDA-AMS & USDA-NASS
Livestock Marketing Information Center

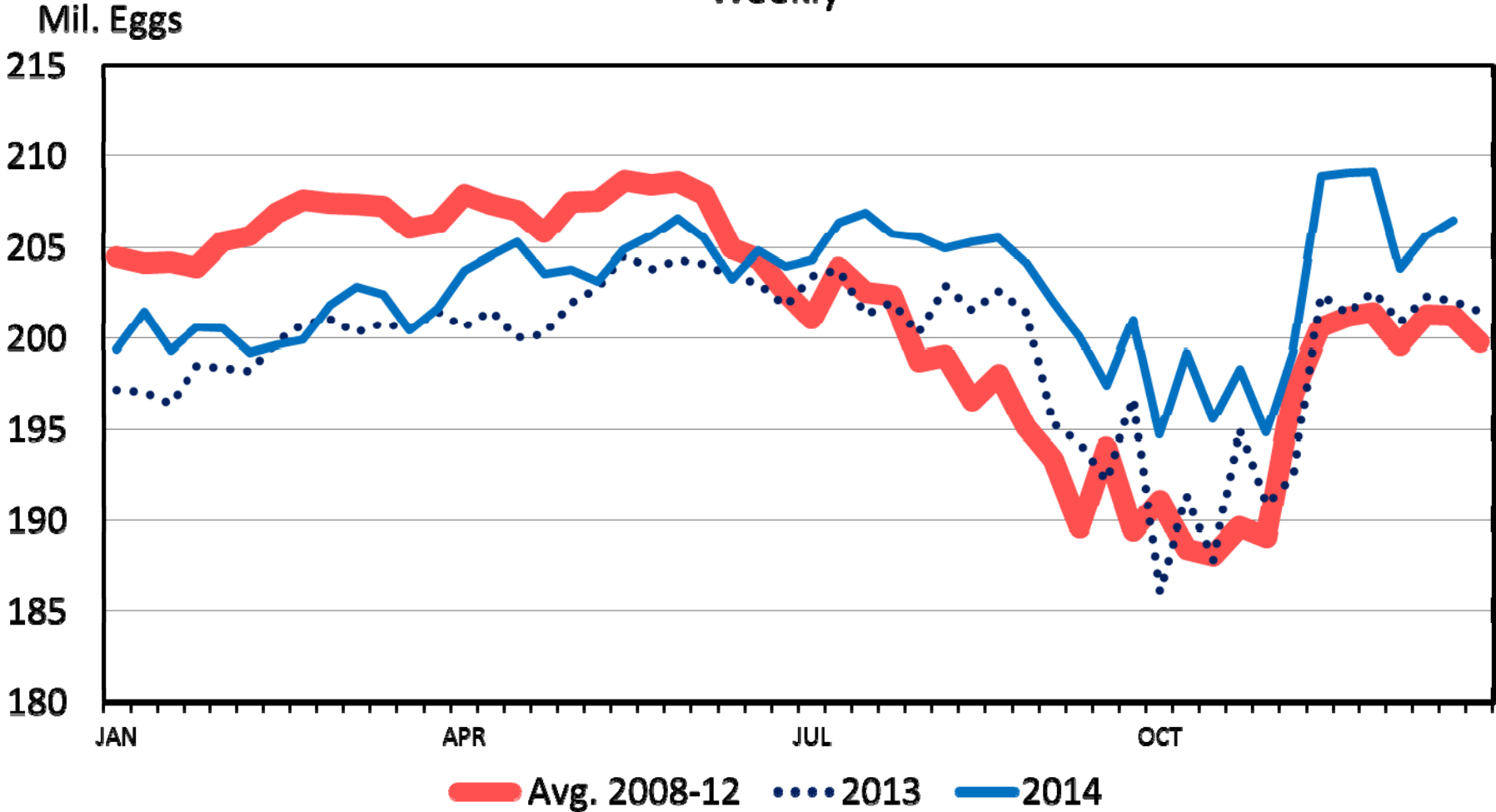
P-S-20
12/26/14

KANSAS STATE UNIVERSITY



BROILER EGGS SET

Weekly



Data Source: USDA-NASS

Livestock Marketing Information Center

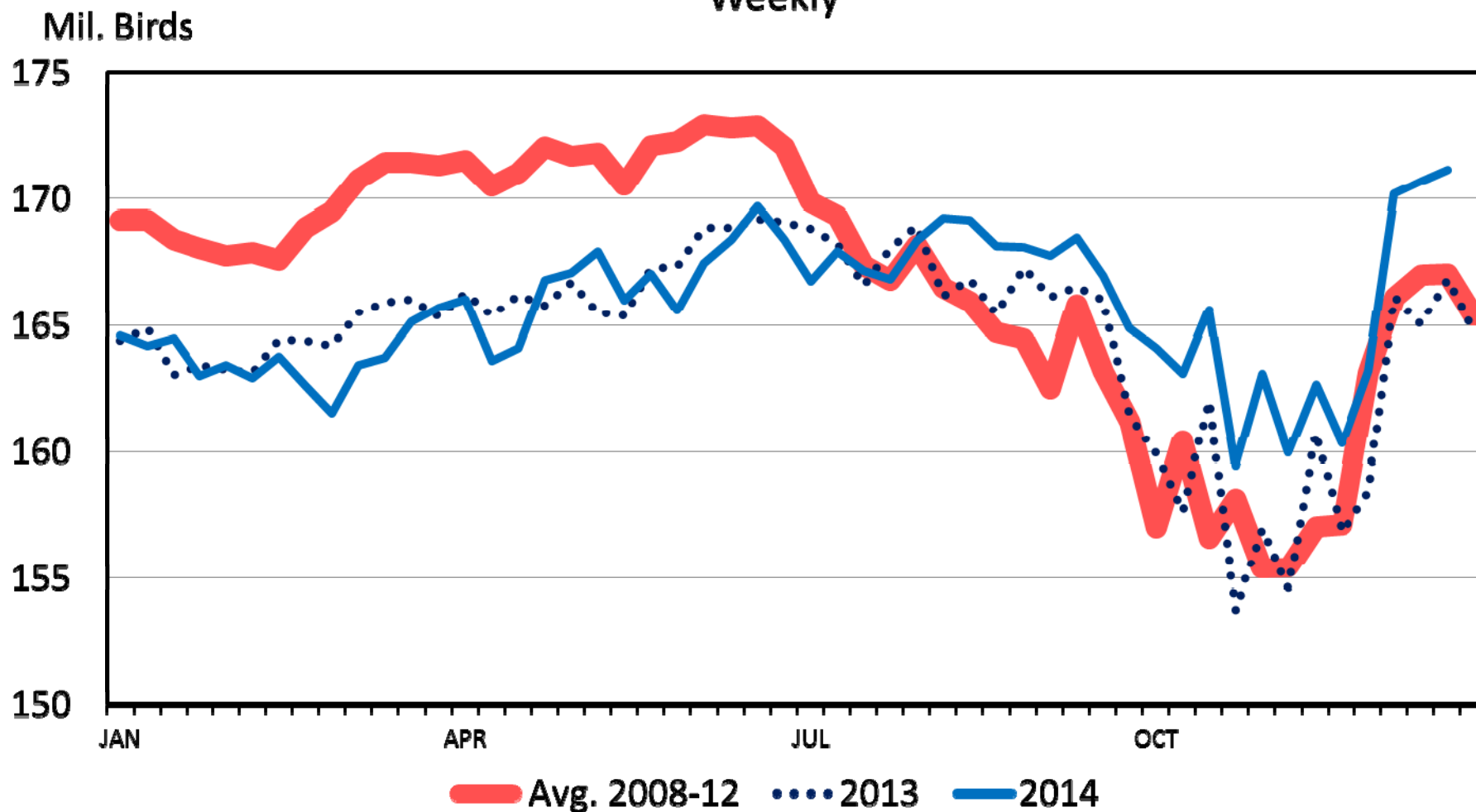
P-S-10
12/26/14

KANSAS STATE UNIVERSITY



BROILER CHICKS PLACED

Weekly



Data Source: USDA-NASS

Livestock Marketing Information Center

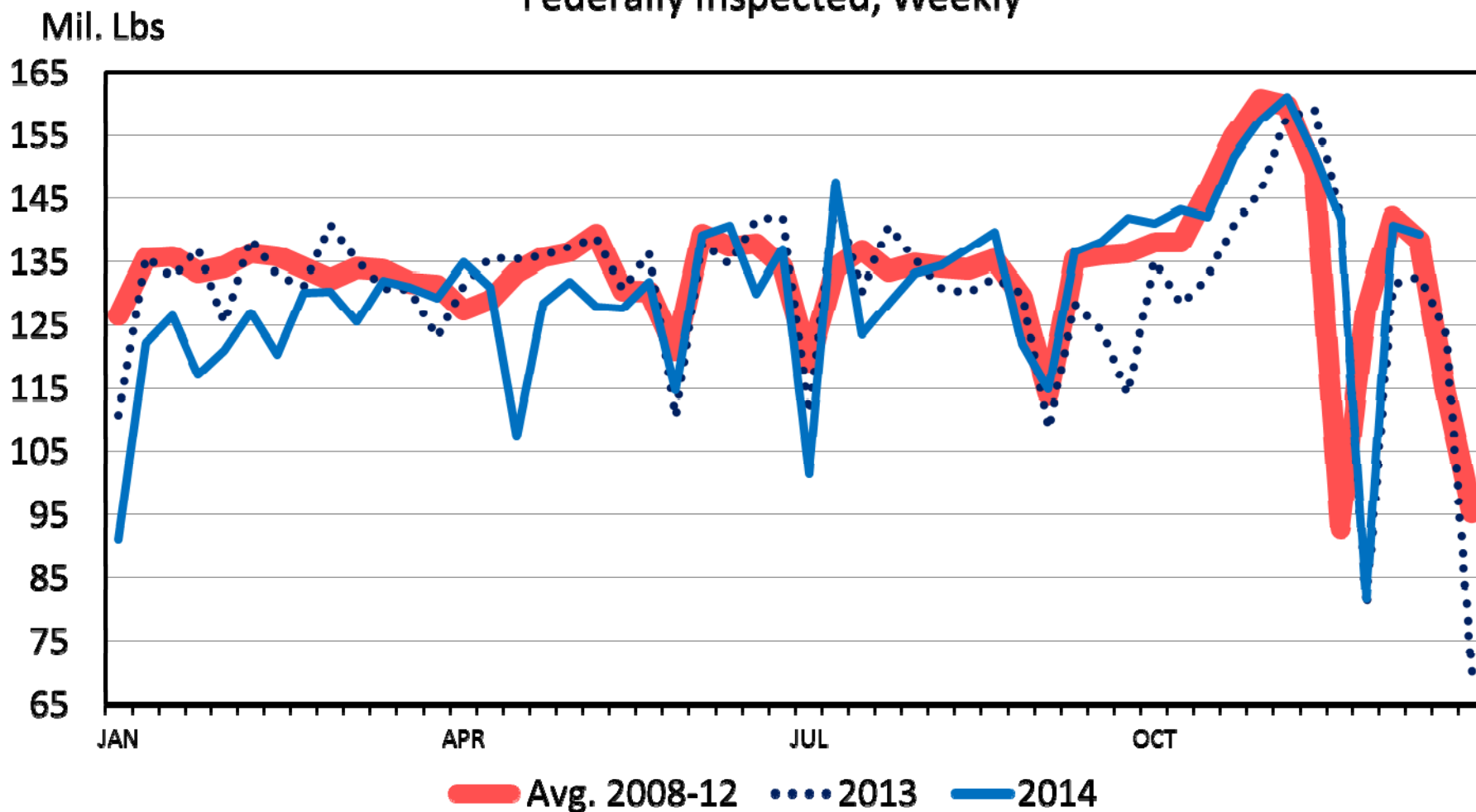
P-S-11
12/26/14

KANSAS STATE UNIVERSITY



TURKEY PRODUCTION

Federally Inspected, Weekly



Data Source: USDA-AMS & USDA-NASS

Livestock Marketing Information Center

P-S-21
12/26/14

KANSAS STATE UNIVERSITY



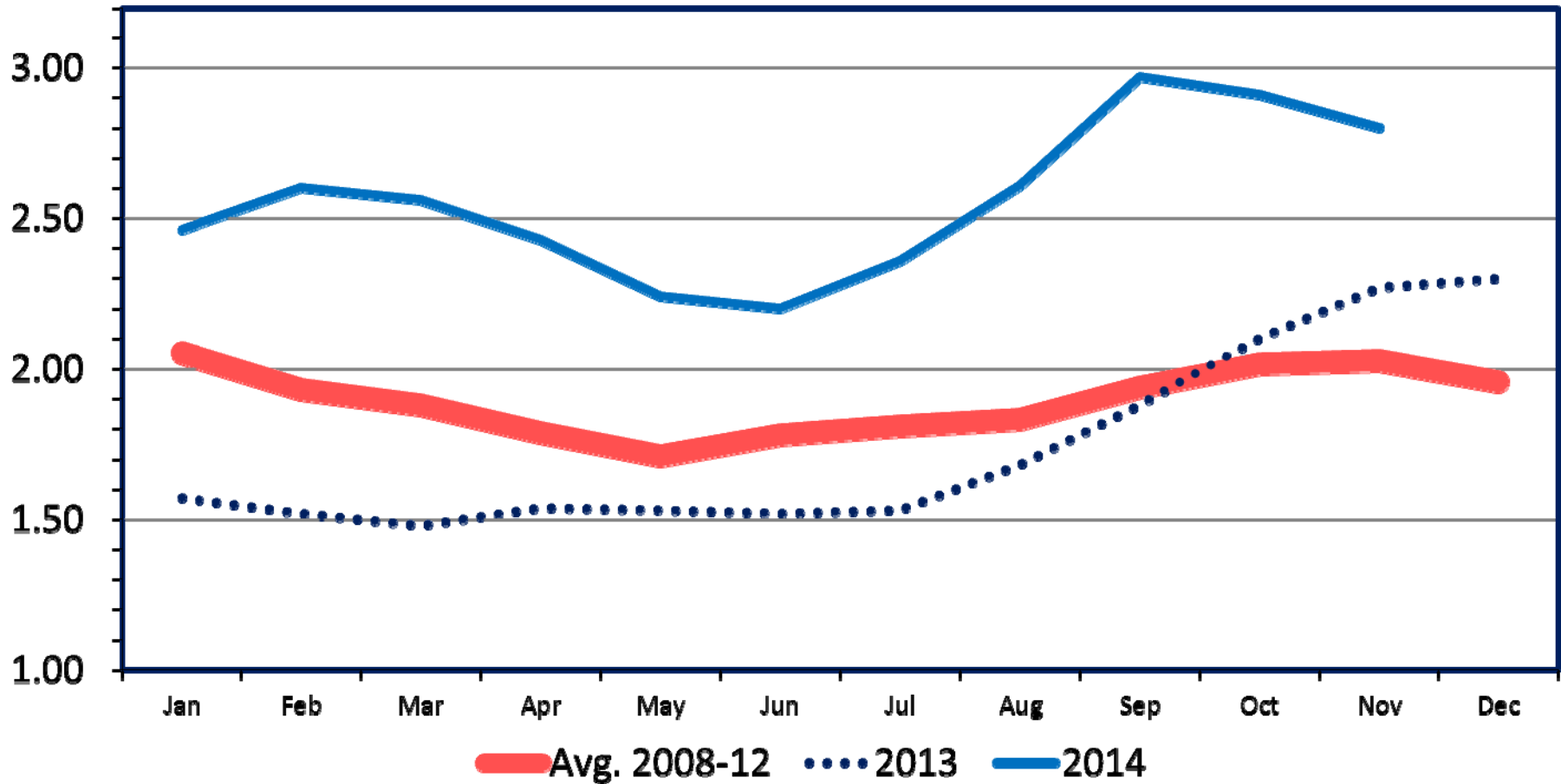
Overarching Dairy Industry Economic Outlook

- Milk-Feed Ratio
 - Up at least 25% in 2014 from prior 5-year average
- Production expansion ongoing:
 - Mainly productivity gains rather than herd size increases



MILK-FEED PRICE RATIO US, Monthly

\$ Per Pound



Data Source: USDA-NASS

Livestock Marketing Information Center

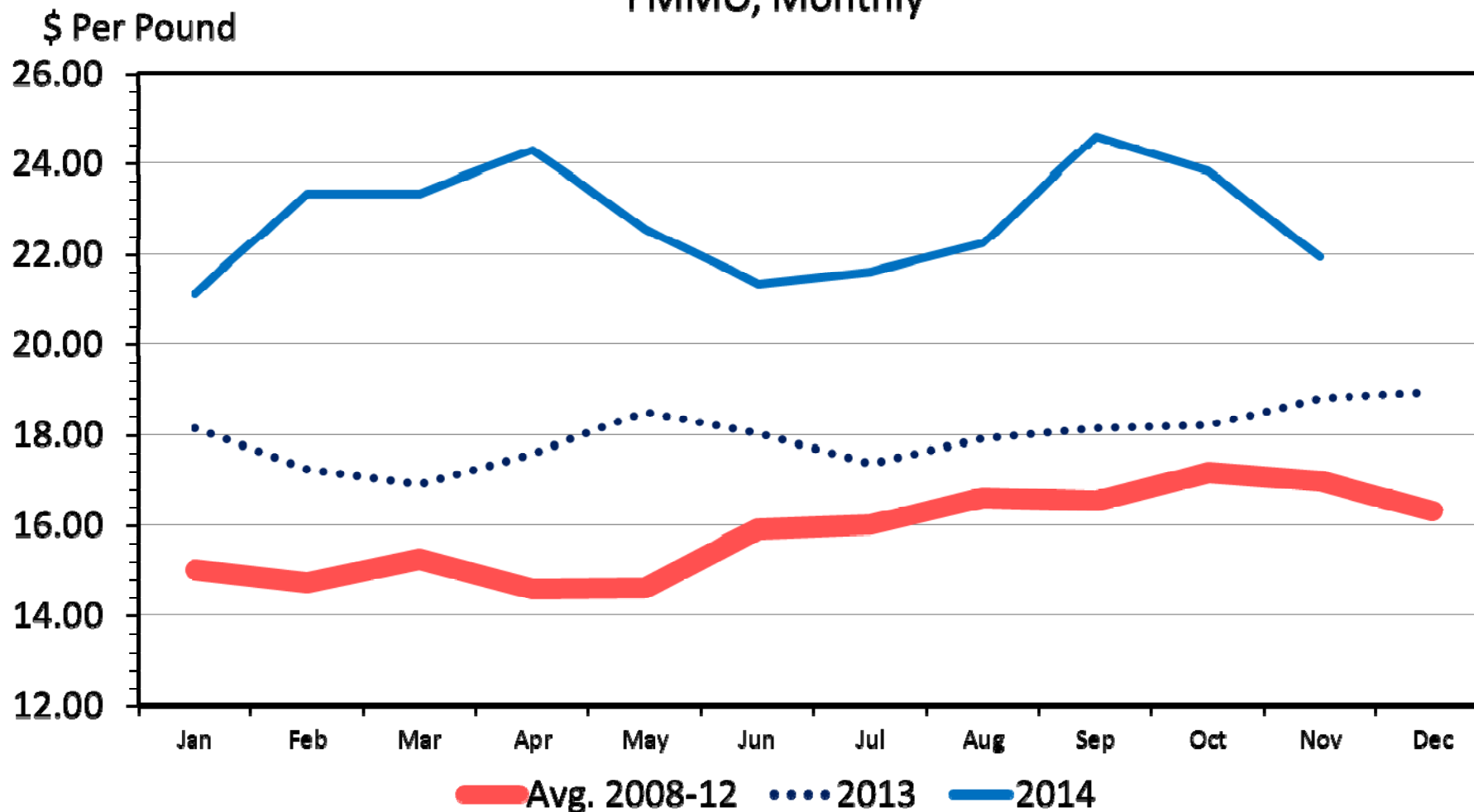
12/28/14

KANSAS STATE UNIVERSITY



CLASS III MILK PRICES

FMMO, Monthly



Data Source: USDA-AMS, Dairy Market News

Livestock Marketing Information Center

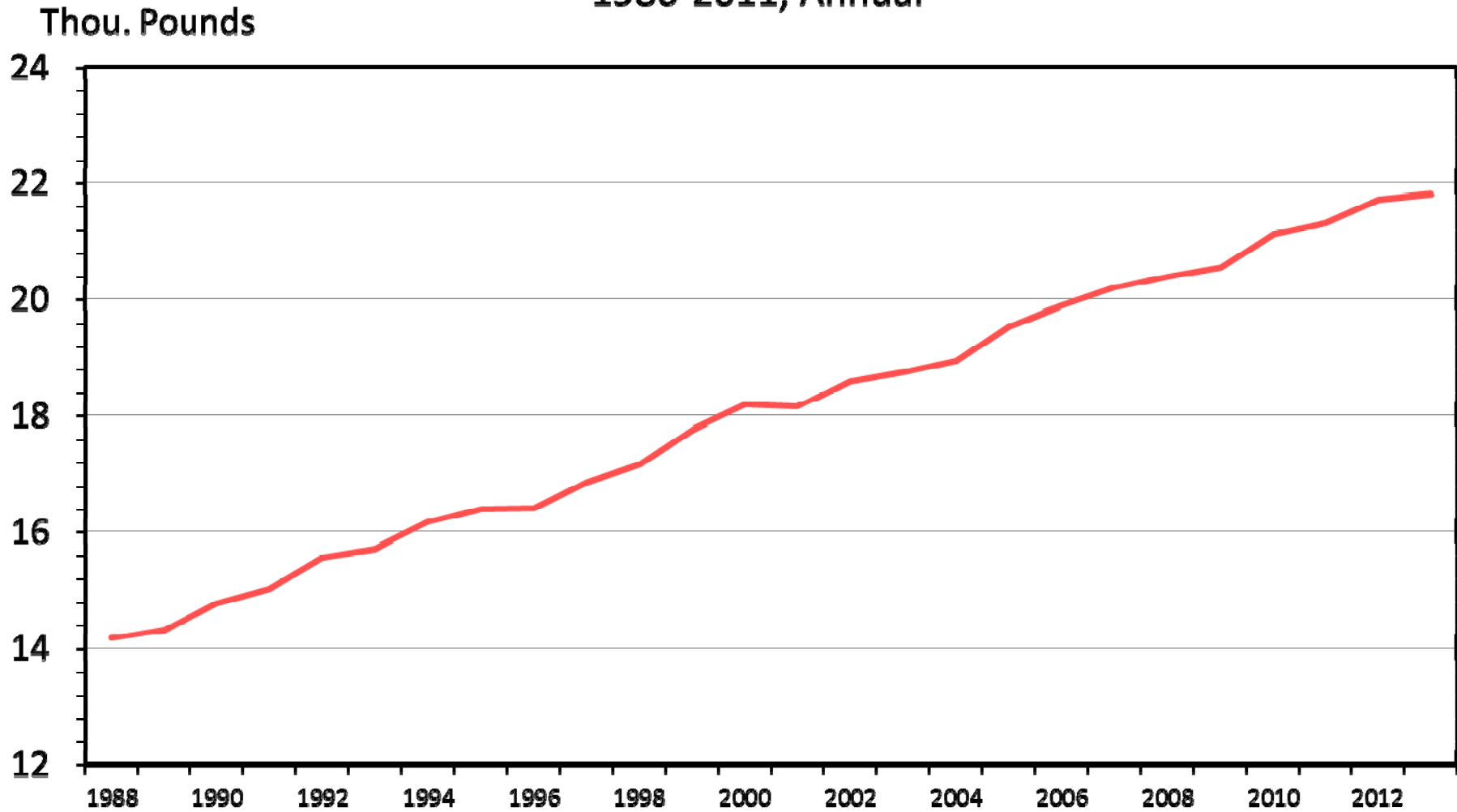
12/28/14

KANSAS STATE UNIVERSITY



MILK PRODUCTION PER MILK COW

1986-2011, Annual



Data Source: USDA/NASS

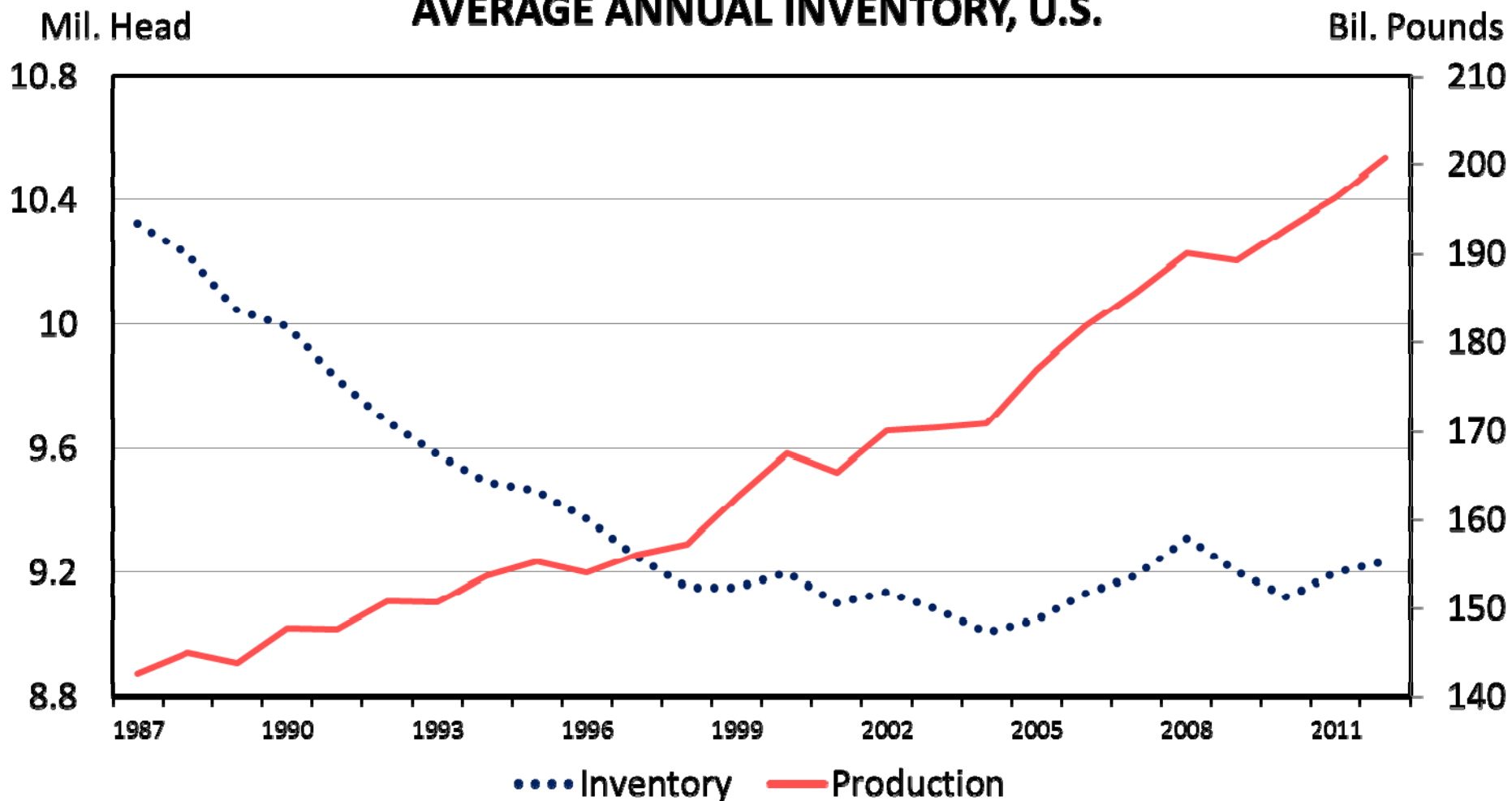
Livestock Marketing Information Center

09/04/14

KANSAS STATE UNIVERSITY



MILK PRODUCTION vs. MILK COW INVENTORY AVERAGE ANNUAL INVENTORY, U.S.



Data Source: USDA/NASS

Livestock Marketing Information Center

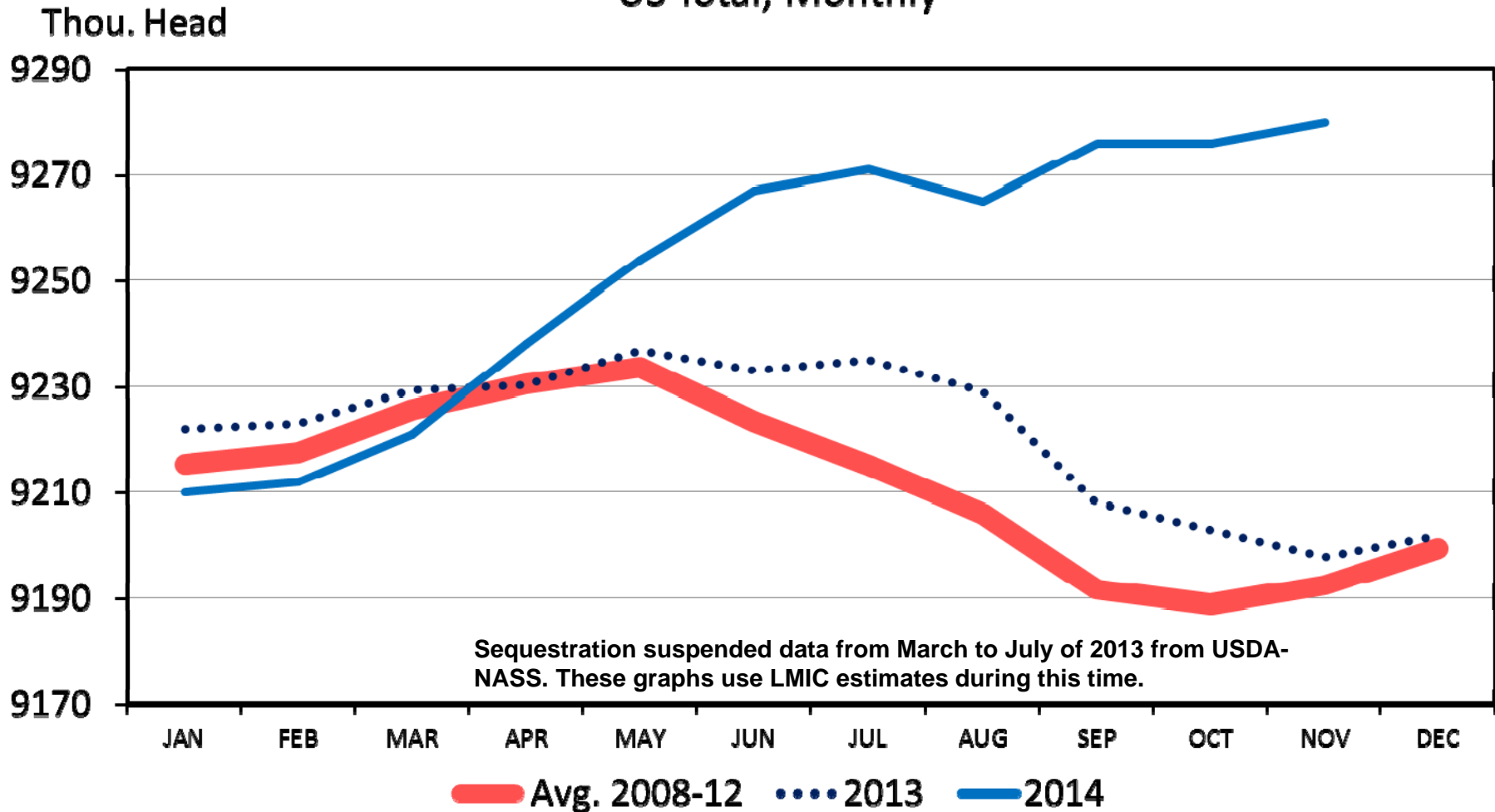
D-S-10
09/04/14

KANSAS STATE UNIVERSITY



DAIRY COW INVENTORY

US Total, Monthly



Data Source: USDA-NASS

Livestock Marketing Information Center

12/19/14

KANSAS STATE UNIVERSITY



LMIC Milk Production and Price Quarterly Forecasts (12/30/14)

Sources: USDA/NASS; USDA/AMS; Projections and Forecasts by LMIC

Year Quarter	Average Number Milk Cows (1,000 Head)	% Chg. from Year Ago	Production Per Cow (Lbs.)	% Chg. from Year Ago	Total Milk Production (Mil. Lbs.)	% Chg. from Year Ago
2014						
I	9214	-0.11	5540	1.19	51046	0.99
II	9253	0.21	5713	1.53	52861	1.66
III	9271	0.51	5518	3.02	51156	3.54
IV ^b	9280	0.86	5475	2.24	50808	3.13
Year	9255	0.36	22246	1.94	205871	2.31
2015						
I ^c	9275	0.66	5625	1.53	52172	2.21
II	9265	0.13	5760	0.82	53366	0.96
III	9255	-0.17	5550	0.58	51365	0.41
IV	9260	-0.22	5520	0.82	51115	0.60
Year	9264	0.10	22455	0.94	208019	1.04
2016						
I	9255	-0.22	5685	1.07	52615	0.85
II	9260	-0.05	5835	1.30	54032	1.25
III	9265	0.11	5620	1.26	52069	1.37
IV	9270	0.11	5600	1.45	51912	1.56
Year	9263	-0.01	22740	1.27	210628	1.25



LMIC Milk Production and Price Quarterly Forecasts (12/30/14)

Sources: USDA/NASS; USDA/AMS; Projections and Forecasts by LMIC

	Class III Price (\$/Cwt.)	% Chg. from Year Ago	US All Milk Price (\$/Cwt.)	NCE/CME 40# Block Price (\$/LB.)
2014				
I	22.61	29.64	24.53	2.2575
II	22.75	26.07	24.23	2.0944
III	22.82	28.11	24.37	2.1730
IV ^b	21.50-22.00	16.52	22.20-22.70	1.92-1.97
Year	22.25-22.75	25.07	23.75-24.25	2.07-2.12
2015				
I ^c	17.75-18.75	-19.28	18.15-19.15	1.70-1.80
II	17.25-18.25	-21.97	17.75-18.75	1.65-1.75
III	16.50-18.00	-24.40	17.25-18.75	1.55-1.70
IV	16.60-18.10	-20.23	17.55-18.95	1.57-1.72
Year	17.35-18.85	-19.56	18.20-19.20	1.65-1.80
2016				
I	17.15-19.15	-0.55	18.40-20.40	1.60-1.80
II	17.65-19.65	5.07	18.65-20.65	1.65-1.85
III	18.00-20.00	10.14	19.15-21.15	1.75-1.95
IV	18.10-20.10	10.09	19.50-21.50	1.80-2.00
Year	17.75-19.75	3.59	19.00-21.00	1.70-2.00

Class III CME Futures (1/9/15)

Q1.2015: \$15.25
 Q2.2015: \$14.71
 Q3.2015: \$16.06
 Q4.2015: \$16.29

Q1.2016: \$16.27
 Q2.2016: \$16.40
 Q3.2016: \$16.57
 Q4.2016: \$16.61



Meat Demand

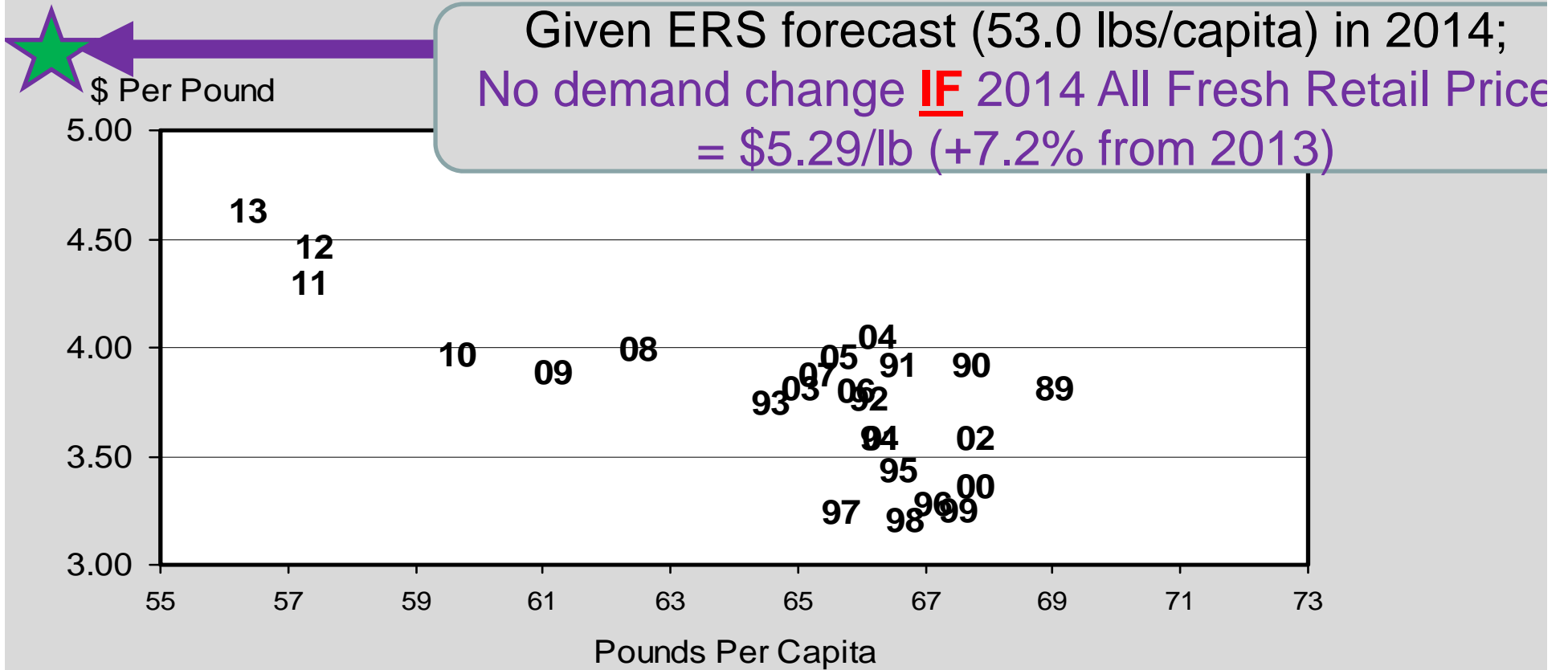
- *Critically Important, Yet Often Confused*
 - *Demand strength*
 - *reflects consumer valuation of meat*
 - *underlies total \$ available for the industry*
 - » *drives prices and profitability for all*
 - **“To Fix It You Have to Understand It”**
 - *Wayne Purcell, 1998 (<http://www.naiber.org/Publications/RILP/primer1.pdf>)*



Domestic Beef Demand

BEEF PRICE-QUANTITY RELATIONSHIP

Annual, Retail Weight, Deflated All Fresh Retail Price



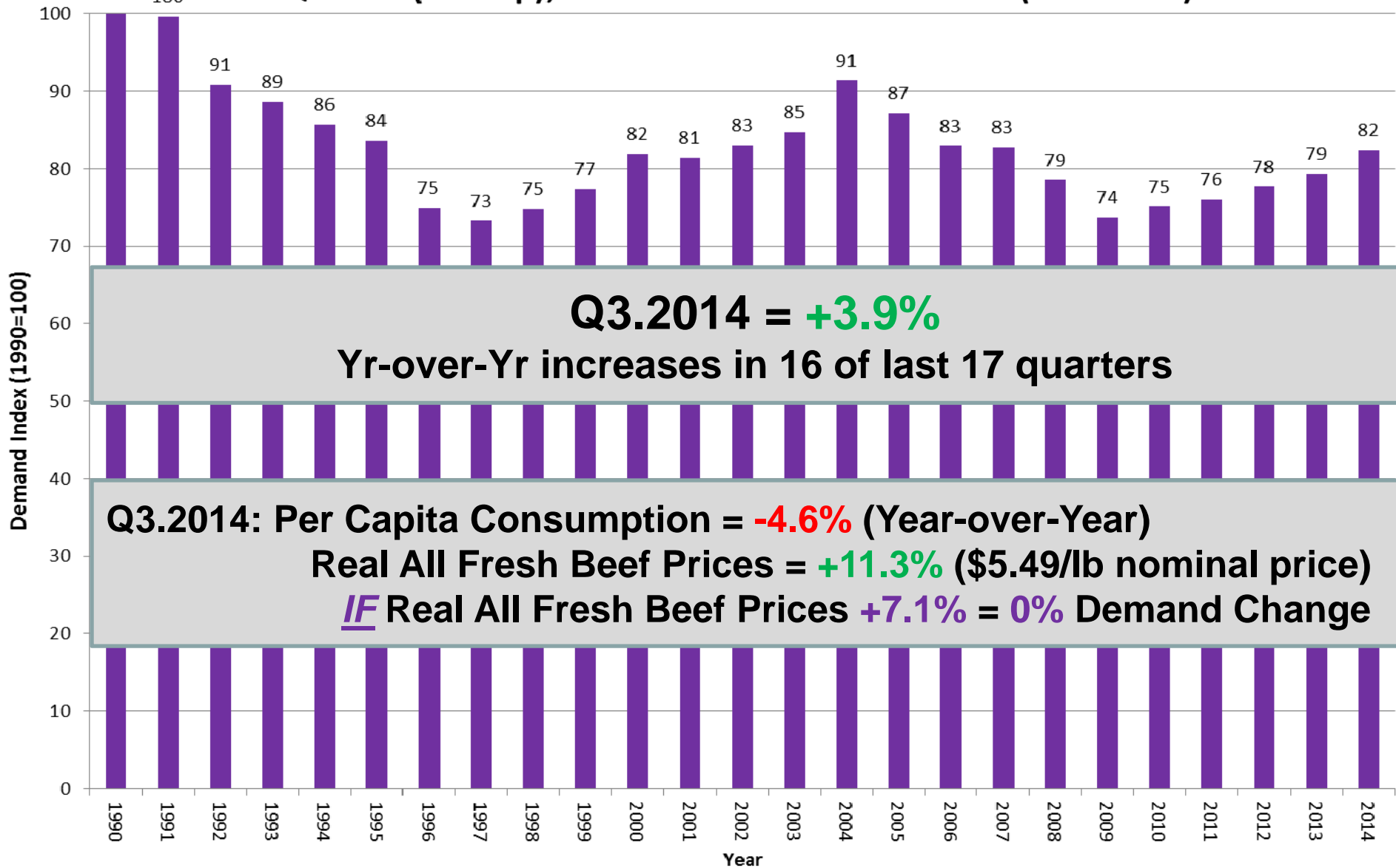
Livestock Marketing Information Center

Data Source: Bureau of Economic Analysis & USDA-ERS, Compiled & Analysis by LMIC

KANSAS STATE UNIVERSITY



3rd Quarter (Jul-Sep), All Fresh Beef Demand Index (1990=100)



Q3.2014 = +3.9%
Yr-over-Yr increases in 16 of last 17 quarters

Q3.2014: Per Capita Consumption = -4.6% (Year-over-Year)
Real All Fresh Beef Prices = +11.3% (\$5.49/lb nominal price)
IF **Real All Fresh Beef Prices +7.1% = 0% Demand Change**

Source: Glynn T. Tonsor, Kansas State University, Oct. 2014

Other “Big Issues” to Note

- Industry Physical Capacity vs. Herd Sizes
- MCOOL
- Int’l Poultry Trade Bans (NW Wild Birds AI)
- 2nd beef checkoff politics
- Mixed impact of lower oil prices
- Fed cattle & market hog price discovery
- Disconnects in voting & buying behavior
- “Science working” ~~≠~~ Public acceptance



Take-Home Summary Points

- Animal/Meat-to-Feed Price Ratios
 - Very attractive = Multi-Year Period of Industry Expansion
- Global Meat Demand
 - Long list of reasons to be bullish
- Expanding Supply & Strong Demand Support =
EXCITING TIME FOR MEAT & LIVESTOCK SECTOR
- “Not your father’s world anymore”
 - Know & leverage your comparative advantage



More information available at:



This presentation will be available in PDF format at:
<http://www.agmanager.info/about/contributors/individual/tonsor.asp>

Glynn T. Tonsor
Associate Professor
Dept. of Agricultural Economics
Kansas State University
Email: gtonsor@ksu.edu
Twitter: @TonsorGlynn



USDA Long-Term projections (2015-2024)

Early release on Dec. 18, 2014

Feb. 11, 2015 report (<http://www.usda.gov/oce/commodity/projections/index.htm>)

Item	Recent		NEXT 5 YEARS					10 Yrs Out
	2013	2014	2015	2016	2017	2018	2019	2024
<i>Pounds</i>								
Beef	56.3	54.6	52.2	49.4	48.5	49.1	49.8	52.4
Pork	46.8	45.3	46.6	48.5	48.8	49.1	49.3	49.5
Total red meat	104.4	101.1	99.9	99.0	98.4	99.3	100.1	102.9
Broilers	81.9	83.4	85.4	86.7	88.1	89.2	90.2	93.1
Turkeys	16.0	15.7	15.8	16.2	16.5	16.7	16.8	17.3
Total poultry	99.2	100.3	102.5	104.2	106.0	107.3	108.4	111.9
Red meat & poultry	203.6	201.4	202.3	203.2	204.4	206.5	208.5	214.8



USDA Long-Term projections (2015-2024)

Early release on Dec. 18, 2014

Feb. 11, 2015 report (<http://www.usda.gov/oce/commodity/projections/index.htm>)

		Recent	NEXT 5 YEARS					10 Yrs Out	
Beef long-term projections									
Item	Units	2013	2014	2015	2016	2017	2018	2019	2024
Commercial production	Mil. lbs.	25,720	24,459	23,665	22,667	22,536	22,986	23,550	25,947
Change from previous year	Percent	-0.7	-4.9	-3.2	-4.2	-0.6	2.0	2.5	0.8
Total production	Mil. lbs.	25,791	24,530	23,736	22,738	22,607	23,057	23,621	26,018
Imports	Mil. lbs.	2,250	2,823	2,700	2,600	2,600	2,725	2,775	3,025
Total supply	Mil. lbs.	28,649	27,937	26,931	25,823	25,697	26,282	26,896	29,543
Exports	Mil. lbs.	2,590	2,599	2,525	2,543	2,662	2,800	2,935	3,475
Total consumption	Mil. lbs.	25,475	24,843	23,921	22,790	22,535	22,982	23,461	25,568
Per capita, retail weight	Pounds	56.3	54.6	52.2	49.4	48.5	49.1	49.8	52.4
Change from previous year	Percent	-1.8	-3.2	-4.4	-5.4	-1.8	1.3	1.4	0.0



USDA Long-Term projections (2015-2024)

Early release on Dec. 18, 2014

Feb. 11, 2015 report (<http://www.usda.gov/oce/commodity/projections/index.htm>)

		Recent	NEXT 5 YEARS					10 Yrs Out	
Beef long-term projections									
Item	Units	2013	2014	2015	2016	2017	2018	2019	2024
Prices:									
Beef cattle, farm	\$/cwt	124.67	152.52	157.54	161.69	163.00	161.85	156.47	156.17
Calves, farm	\$/cwt	174.25	247.86	278.24	263.78	249.96	247.21	237.11	231.42
Steers, 5-area	\$/cwt	125.89	154.41	159.50	163.70	165.03	163.86	158.42	158.11
Feeder steers, Oklahoma City	\$/cwt	147.06	202.51	226.75	214.96	203.70	201.46	193.23	188.59
Feed price ratio:									
Beef cattle-corn	Ratio	18.1	34.2	45.0	47.6	46.6	46.2	44.7	42.2
Beef cow inventory	1,000 head	29,631	29,042	28,922	28,991	29,741	30,992	31,837	33,697



USDA Long-Term projections (2015-2024)

Early release on Dec. 18, 2014

Feb. 11, 2015 report (<http://www.usda.gov/oce/commodity/projections/index.htm>)

		Recent	NEXT 5 YEARS					10 Yrs Out	
Pork long-term projections									
Item	Units	2013	2014	2015	2016	2017	2018	2019	2024
Commercial production	Mil. lbs.	23,187	22,662	23,620	24,664	25,052	25,402	25,681	26,808
Change from previous year	Percent	-0.3	-2.3	4.2	4.4	1.6	1.4	1.1	1.0
Total production	Mil. lbs.	23,200	22,675	23,633	24,677	25,065	25,415	25,694	26,821
Imports	Mil. lbs.	880	973	900	900	913	926	939	1,004
Total supply	Mil. lbs.	24,705	24,266	25,113	26,182	26,578	26,941	27,233	28,425
Exports	Mil. lbs.	4,992	5,066	5,250	5,375	5,500	5,600	5,675	6,050
Ending stocks	Mil. lbs.	618	580	605	600	600	600	600	600
Total consumption	Mil. lbs.	19,095	18,620	19,258	20,207	20,478	20,741	20,958	21,775
Per capita, retail weight	Pounds	46.8	45.3	46.6	48.5	48.8	49.1	49.3	49.5
Change from previous year	Percent	1.9	-3.2	2.7	4.2	0.6	0.6	0.4	0.2



USDA Long-Term projections (2015-2024)

Early release on Dec. 18, 2014

Feb. 11, 2015 report (<http://www.usda.gov/oce/commodity/projections/index.htm>)

		Recent	NEXT 5 YEARS					10 Yrs Out	
Pork long-term projections									
Item	Units	2013	2014	2015	2016	2017	2018	2019	2024
Prices:									
Hogs, farm	\$/cwt	67.22	77.98	66.96	59.26	56.44	54.59	53.63	55.65
National base, live equivalent	\$/cwt	64.05	76.60	65.75	57.54	54.79	53.00	52.07	54.03
Feed price ratio:									
Hog-corn	Ratio	9.8	17.5	19.1	17.4	16.1	15.6	15.3	15.0
Hog inventory,									
December 1, previous year	1,000 head	66,224	64,775	65,400	66,916	67,480	67,987	68,393	70,030



USDA Long-Term projections (2015-2024)

Early release on Dec. 18, 2014

Feb. 11, 2015 report (<http://www.usda.gov/oce/commodity/projections/index.htm>)

		Recent	NEXT 5 YEARS					10 Yrs Out	
Young chicken long-term projections									
Item	Units	2013	2014	2015	2016	2017	2018	2019	2024
Federally inspected slaughter	Mil. lbs.	37,830	38,484	39,630	40,586	41,525	42,307	43,081	45,997
Change from previous year	Percent	2.1	1.7	3.0	2.4	2.3	1.9	1.8	1.1
Production	Mil. lbs.	37,425	38,072	39,206	40,151	41,081	41,854	42,620	45,505
Total supply	Mil. lbs.	38,198	38,859	39,932	40,913	41,849	42,623	43,390	46,280
Change from previous year	Percent	2.3	1.7	2.8	2.5	2.3	1.9	1.8	1.1
Exports	Mil. lbs.	7,345	7,319	7,400	7,629	7,805	7,952	8,098	8,646
Ending stocks	Mil. lbs.	669	610	645	650	650	650	650	650
Consumption	Mil. lbs.	30,184	30,930	31,887	32,634	33,394	34,021	34,642	36,984
Per capita, retail weight	Pounds	81.9	83.4	85.4	86.7	88.1	89.2	90.2	93.1
Change from previous year	Percent	1.9	1.8	2.4	1.6	1.6	1.2	1.1	0.4



USDA Long-Term projections (2015-2024)

Early release on Dec. 18, 2014

Feb. 11, 2015 report (<http://www.usda.gov/oce/commodity/projections/index.htm>)

		Recent	NEXT 5 YEARS					10 Yrs Out	
Young chicken long-term projections									
Item	Units	2013	2014	2015	2016	2017	2018	2019	2024
Prices:									
Broilers, farm	Cents/lb.	60.5	64.2	63.5	62.7	61.9	61.3	60.7	62.2
Broilers, National composite	Cents/lb.	99.7	105.2	104.0	102.9	101.7	100.7	99.7	102.2
Feed price ratio:									
Broiler-feed 1/	Ratio	3.5	4.7	6.0	6.6	6.4	6.3	6.1	6.0



USDA Long-Term projections (2015-2024)

Early release on Dec. 18, 2014

Feb. 11, 2015 report (<http://www.usda.gov/oce/commodity/projections/index.htm>)

		Recent	NEXT 5 YEARS					10 Yrs Out	
Dairy long-term projections									
Item	Units	2013	2014	2015	2016	2017	2018	2019	2024
Milk production and marketings:									
Number of cows	Thousand	9,221	9,255	9,325	9,350	9,365	9,375	9,375	9,215
Milk per cow	Pounds	21,822	22,285	22,770	23,275	23,680	24,140	24,580	27,060
Milk production	Bil. lbs.	201.2	206.2	212.3	217.6	221.8	226.3	230.4	249.4
Farm use	Bil. lbs.	1.0	1.0	1.0	1.0	1.0	1.0	1.0	0.9
Marketings	Bil. lbs.	200.2	205.2	211.3	216.6	220.8	225.3	229.5	248.4
Prices:									
All milk	\$/cwt	20.05	24.20	19.30	18.70	18.30	18.05	18.05	19.20



USDA Long-Term projections (2015-2024)

Early release on Dec. 18, 2014

Feb. 11, 2015 report (<http://www.usda.gov/oce/commodity/projections/index.htm>)

	Recent	NEXT 5 YEARS					10 Yrs Out	
U.S. corn long-term projections								
Item	2013/14	2014/15	2015/16	2016/17	2017/18	2018/19	2019/20	2024/25
Area (million acres):								
Harvested acres	87.7	83.1	80.4	82.4	82.4	82.4	81.9	81.4
Yield:								
Bushels per harvested acre	158.8	173.4	167.2	169.2	171.2	173.2	175.3	185.3
Ending stocks	1,236	2,008	1,733	1,738	1,753	1,773	1,748	1,658
Stocks/use ratio, percent	9.1	14.7	12.6	12.4	12.4	12.4	12.1	11.0
Prices (dollars per bushel):								
Farm price	4.46	3.50	3.40	3.50	3.50	3.50	3.55	3.75

