

Glynn and Mykel Tackle the Big Issues (with your help)

**Glynn Tonsor and Mykel Taylor
Dept. of Agricultural Economics
Kansas State University**

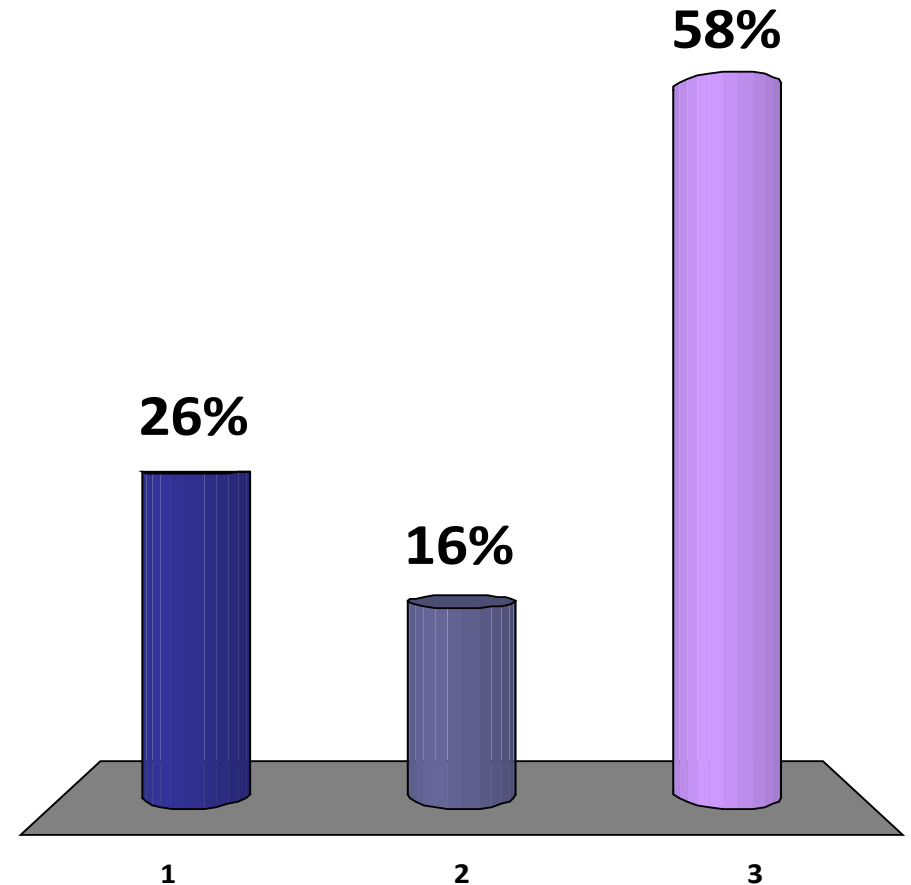


***MAST Presentation
February 21, 2012***



How long have you been directly involved (besides as a consumer) in U.S. agriculture?

1. Less than 5 years
2. 5 – 15 years
3. Over 15 years

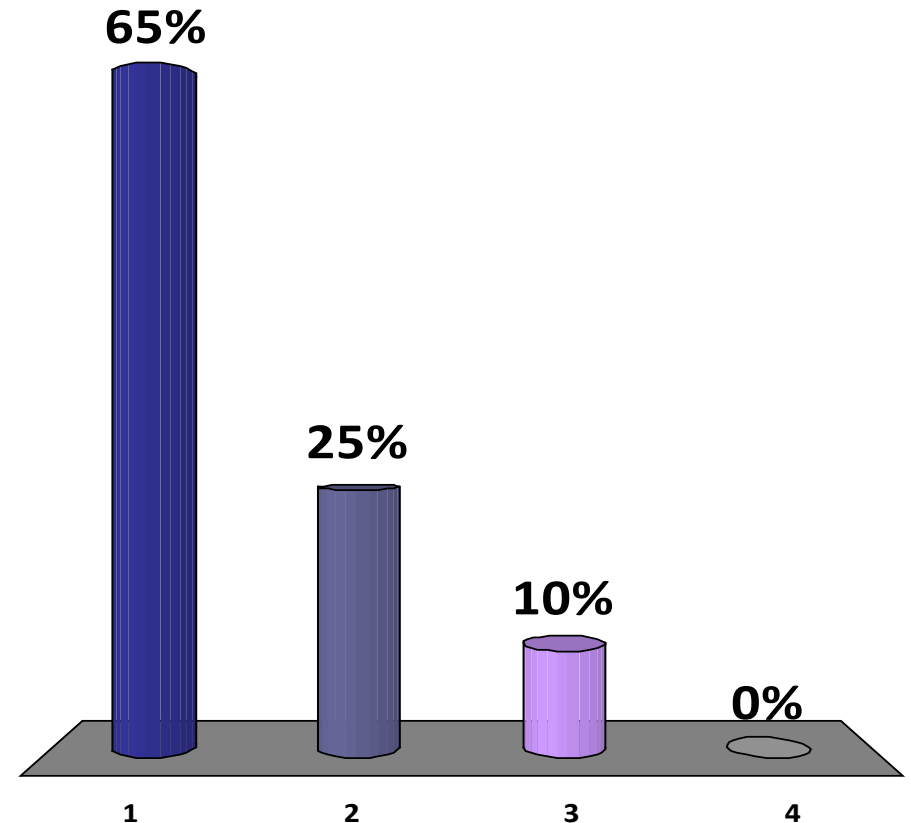


THE BIG PICTURE



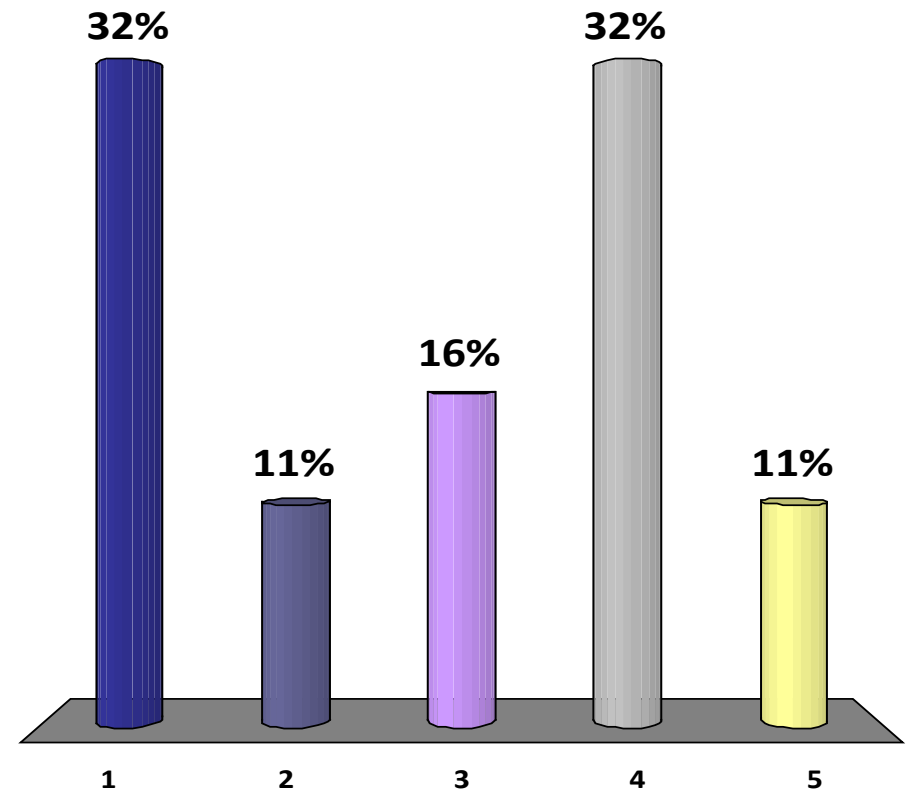
What best describes your sentiment regarding the long run economic prospects of the U.S. agricultural industry?

1. I'm optimistic
2. I'm neutral
3. I'm pessimistic
4. I have no clear sentiment



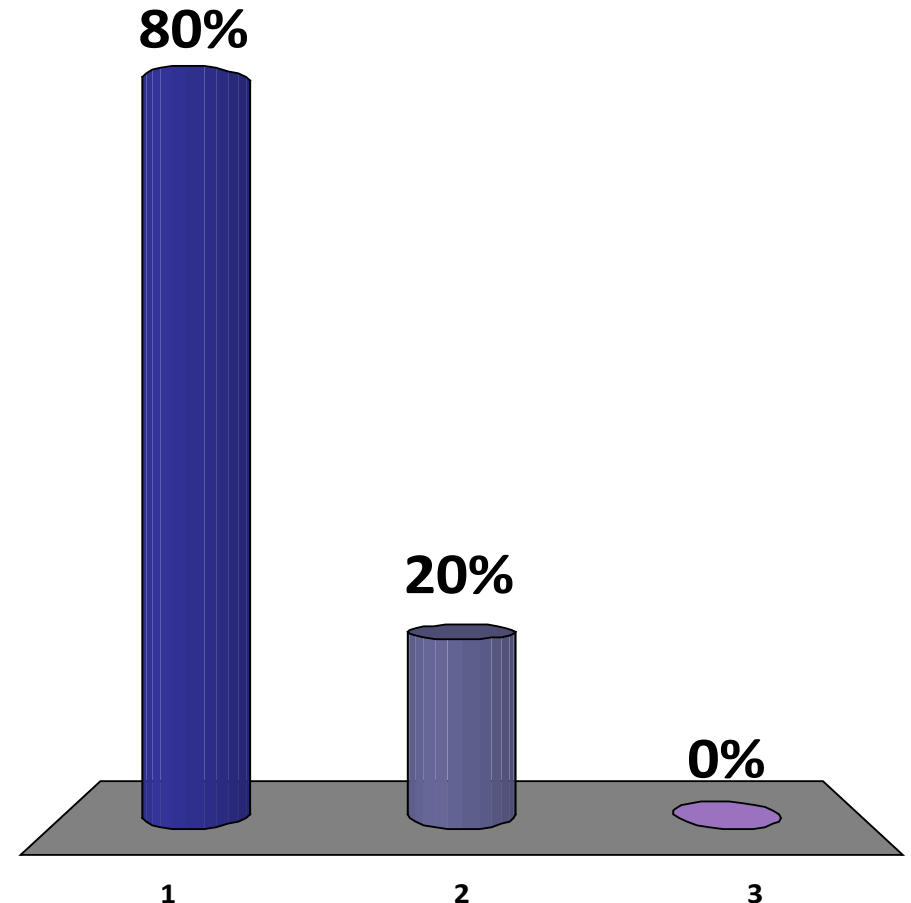
What factor do you think restricts current investment in U.S. agriculture the most?

1. Regulatory uncertainty (Farm Bill, EPA)
2. Tax codes/policy
3. 2012 elections
4. Commodity price volatility
5. Global economics (Eurozone)



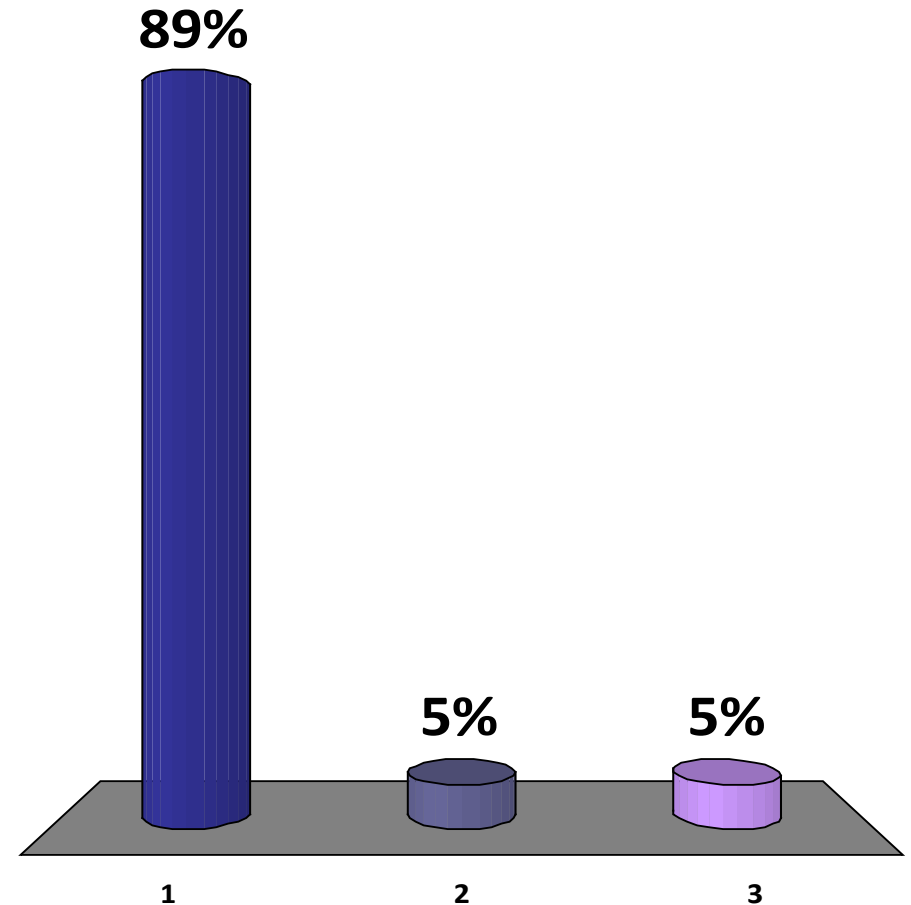
Are you in favor of using corn to produce ethanol?

1. Yes, and I look forward to expanded production
2. Yes, but we need to limit corn's use
3. No, it should be outlawed



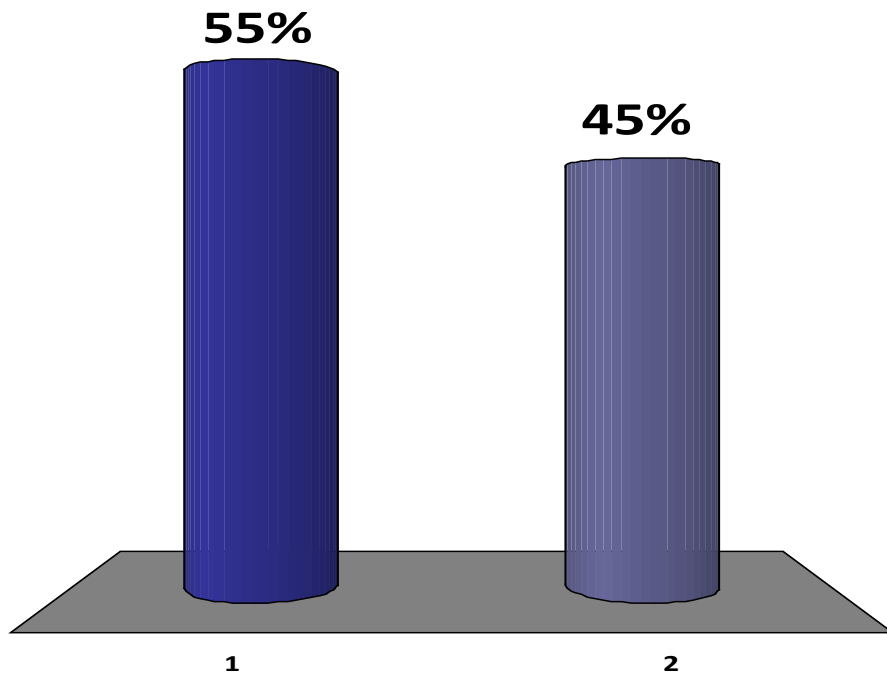
How do you think the challenge of 'feeding 9 billion people' will be met?

1. Expanded food production
2. Reduced waste of food post-production
3. Other



If a new policy increases the total costs for an industry, without enhancing demand for its products, can an industry gain market share from the policy being implemented?

1. Yes
2. No

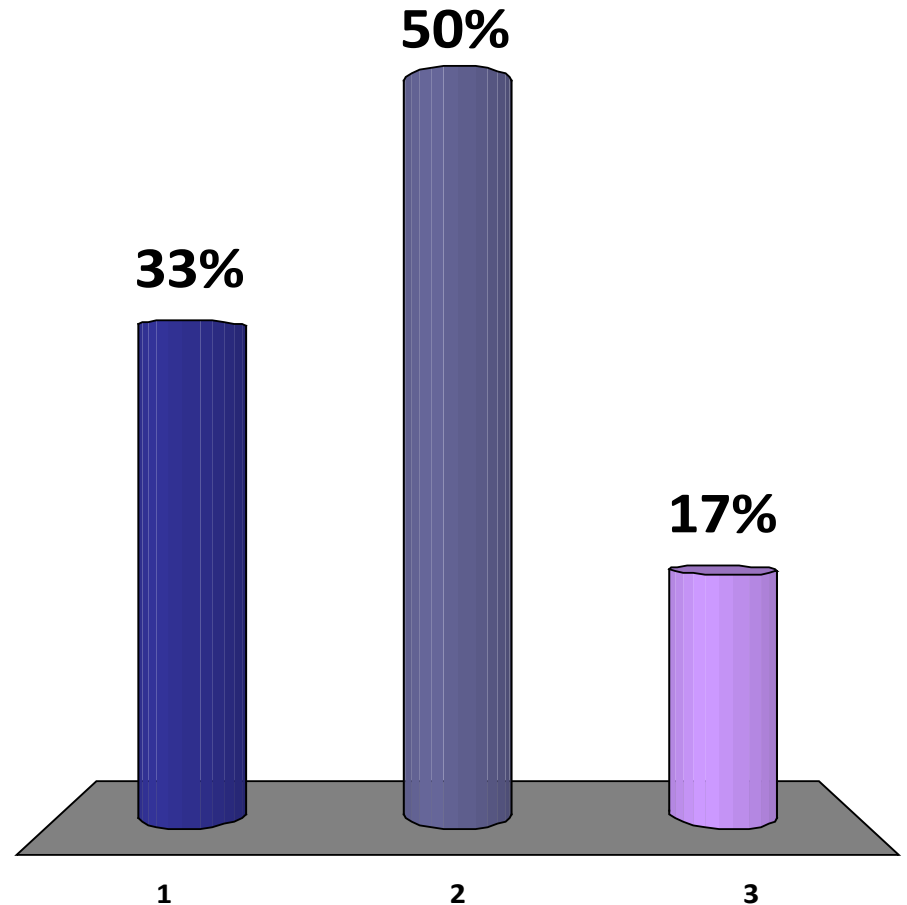


THE PRODUCER VIEWPOINT



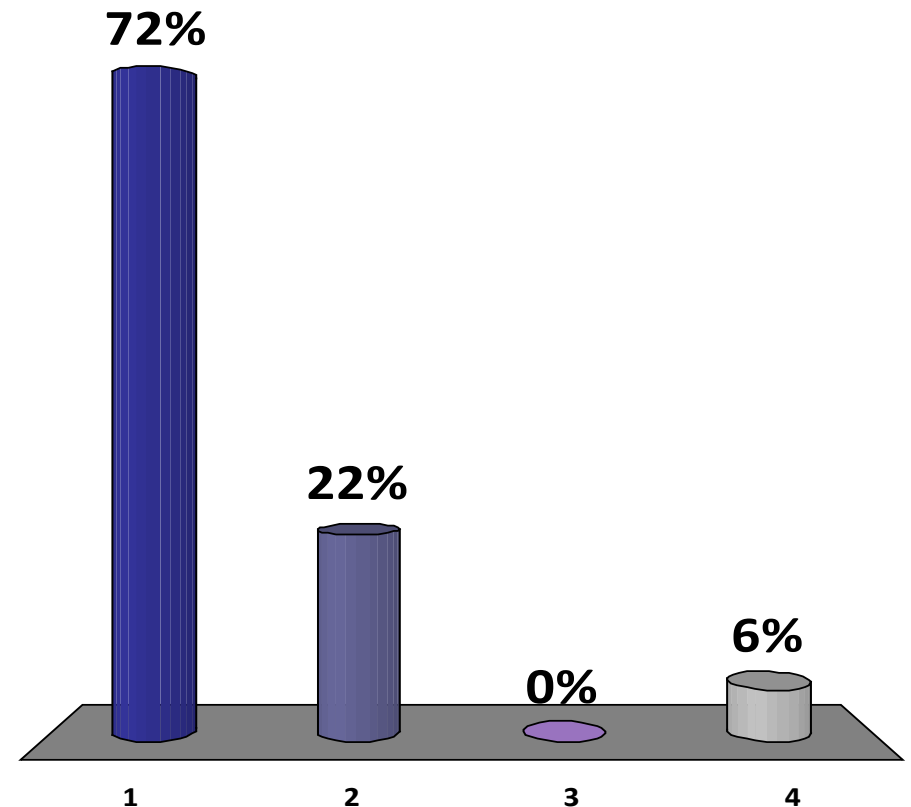
What do you think most influences profitability in your business?

1. Output prices
2. Cost of production
3. Other



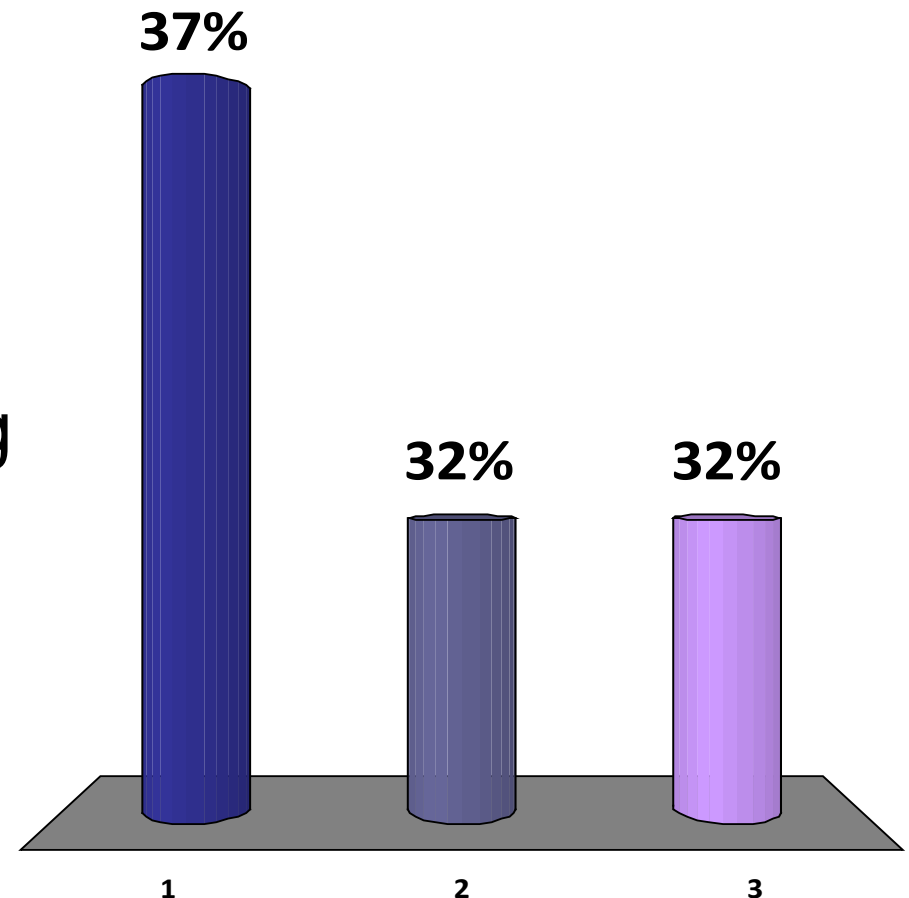
Which trait best reflects the key strength of your operation?

1. Unique resources for managing production costs
2. Profitable economies of scale
3. Non-commodity business plan
4. Other



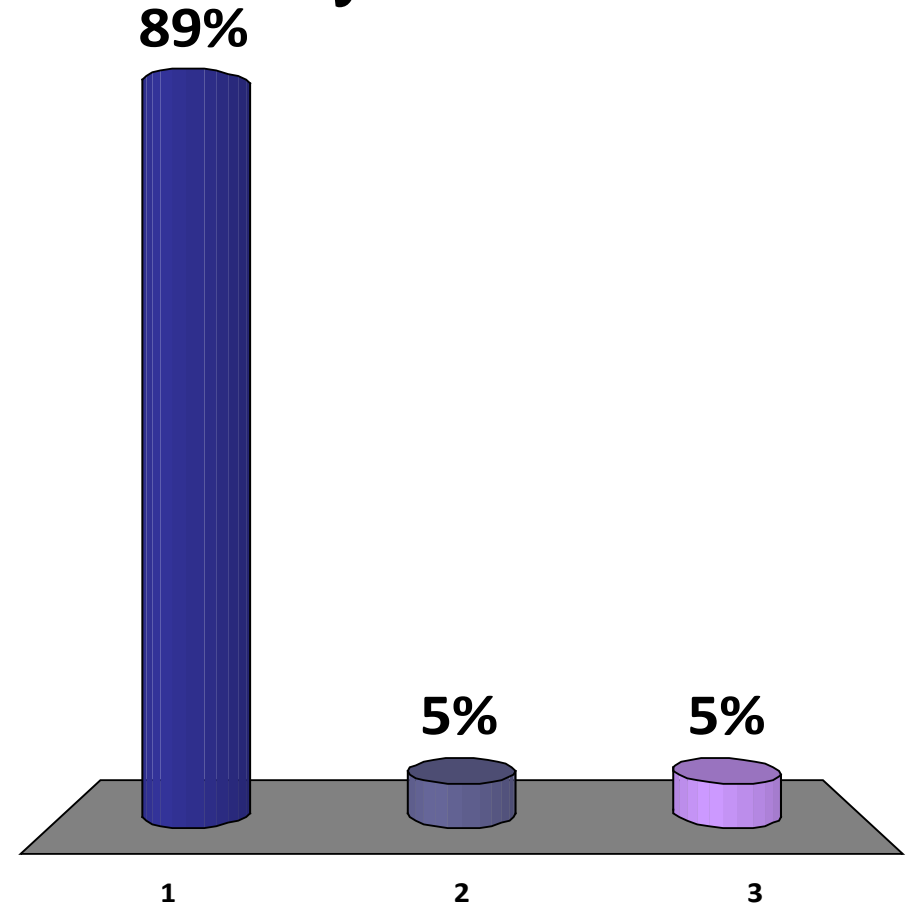
Which of these best describes your views regarding U.S. farmland values?

1. Current prices will be exceeded by further increases
2. Current prices will persist and are reaching 'equilibrium'
3. Current prices are inflated and won't persist



Are you in favor of developing new animal and crop production methods to increase efficiency?

1. Yes
2. Yes, but in balance with other factors
3. No

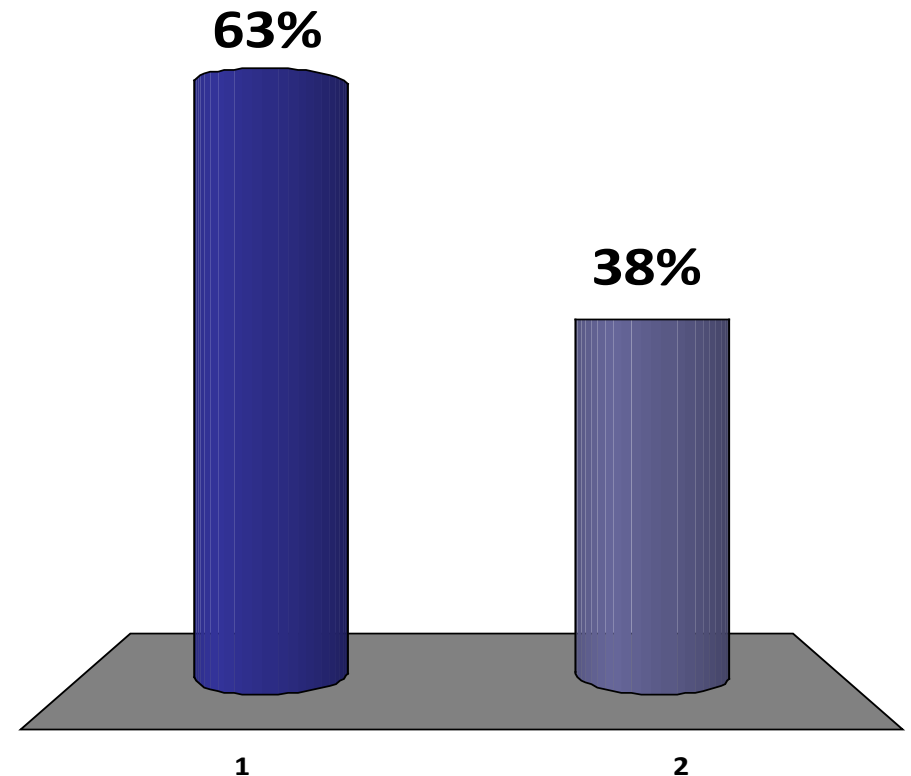


THE CONSUMER VIEWPOINT



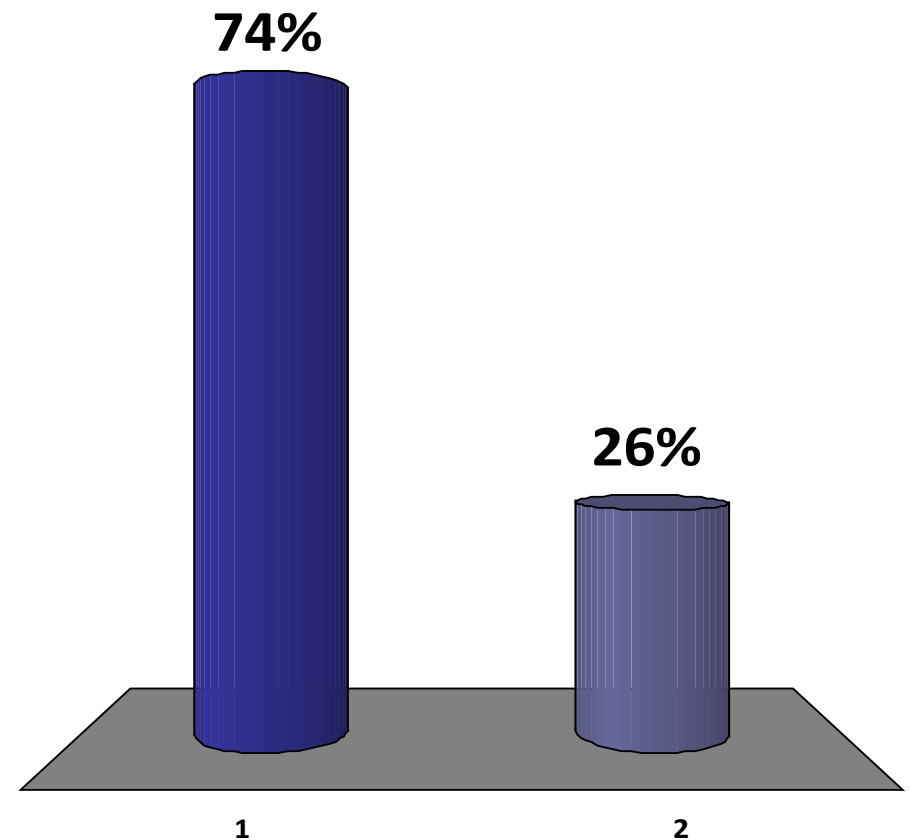
Do you agree with the statement
'perception is reality' when it comes to
understanding consumers?

1. Yes
2. No



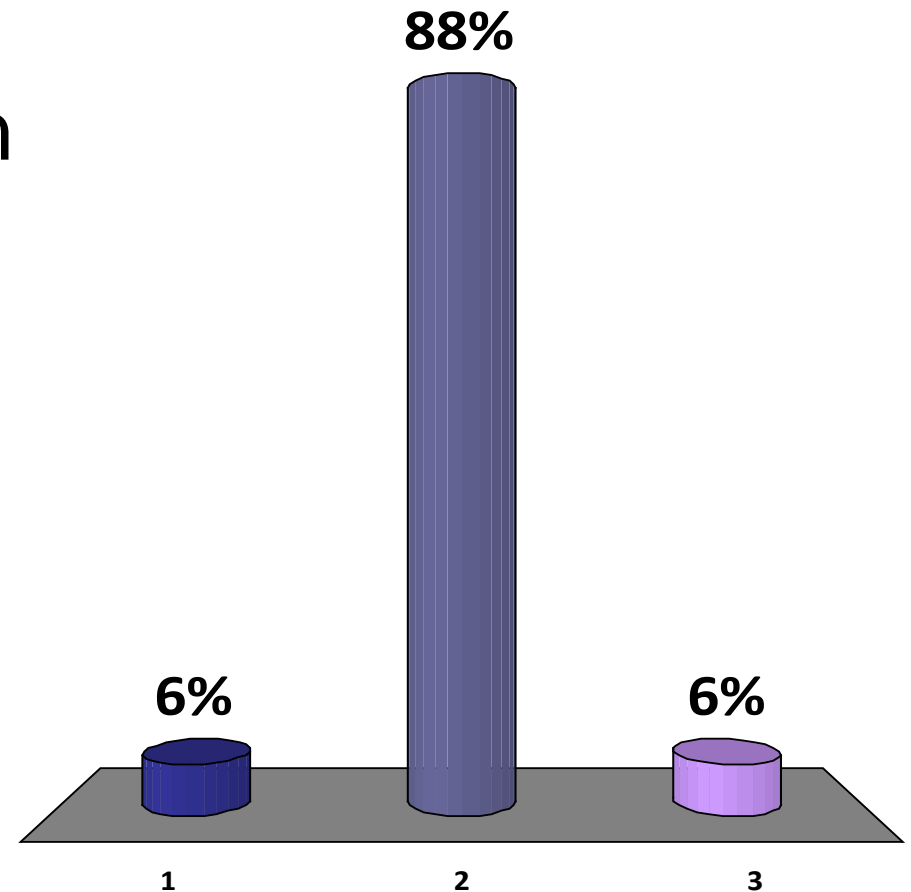
In the future, do you think U.S. households will spend a larger % of their income on food?

1. Yes
2. No



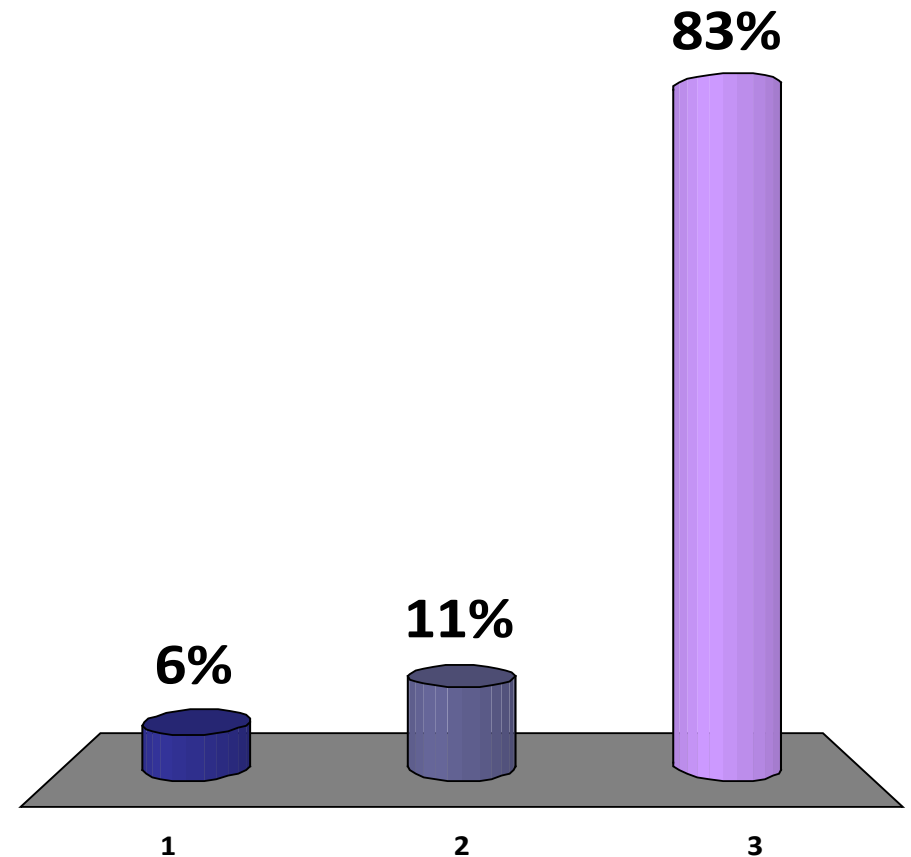
How do you think adoption rates of GMO wheat would compare to those of GMO corn and soybeans?

1. GMO wheat adoption would exceed corn and soybeans
2. Adoption rates would be about the same
3. GMO wheat would not be adopted



Are you familiar with the Slow Food movement?

1. Yes, and I think it is an important issue for U.S. agriculture
2. Yes, and I think it is irrelevant to U.S. agriculture
3. No



What best describes your sentiment regarding the long run economic prospects of the U.S. agricultural industry?

1. I'm optimistic
2. I'm neutral
3. I'm pessimistic
4. I have no clear sentiment

