

Farm & Ranch Succession Planning

February 23, 2019

9:00am - 1:00pm

Waterville Elementary School Cafeteria
(121 E Commercial St.)

The transfer of ownership, management, and leadership from one generation to another is an important issue for farms, ranches, and rural communities across Kansas.

All family members are welcome.

Cost: \$5/person. RSVP Required.

Lunch will be provided.

Speakers & Topics:

Shon Robben, Arthur-Green, LLP

Different ways to transfer the farm and the legalities behind each way.

LaVell Winsor, Kansas Farm Management Analyst

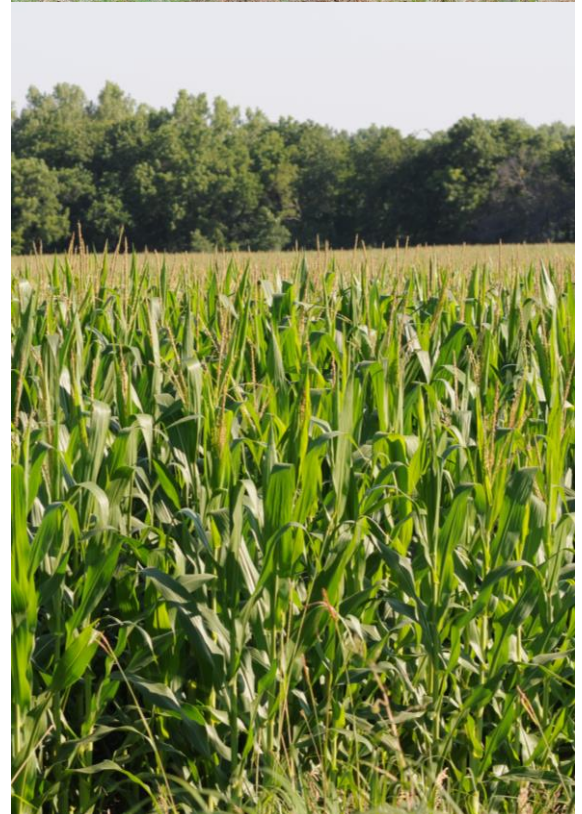
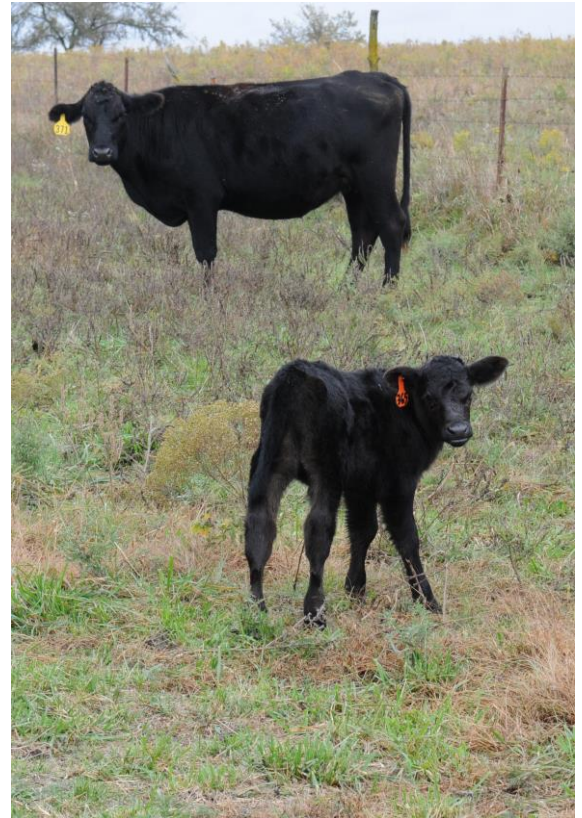
Examples of how others families have started the conversations and transitioned the farm.

Register at:

785/562-3531

anastasia@ksu.edu

<https://tinyurl.com/MS02-23-19>



This meeting is offered in partnership with Valley Heights Community Education.



K-STATE
Research and Extension

Marshall County

Kansas State University is committed to making its services, activities and programs accessible to all participants. If you have special requirements due to a physical, vision, or hearing disability, contact Anastasia Johnson, (785)562-3531.

Kansas State University Agricultural Experiment Station and Cooperative Extension Service
K-State Research and Extension is an equal opportunity provider and employer.